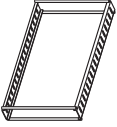
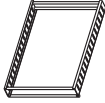
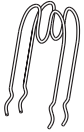



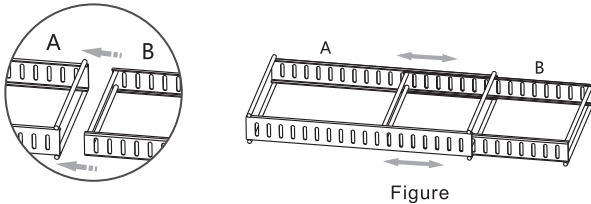
Pot Rack Installation Instructions

Accessories include

A	B	C	D
Large frame	Small frame	Bracket	Anti-skid pad
			

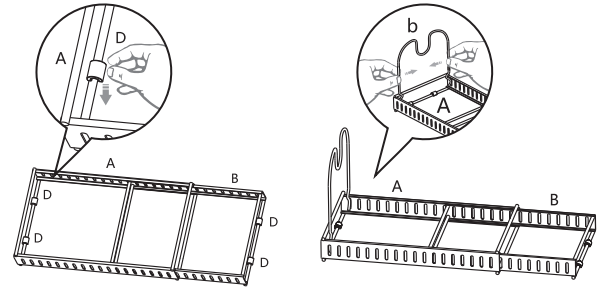
Installation steps

Step 1: Insert the frame B into the frame A and adjust it to the appropriate length according to requirements, as shown in Figure ;



Step 2: Install the Anti-skid pad D on the bottom of the frame, as shown in Figure B .

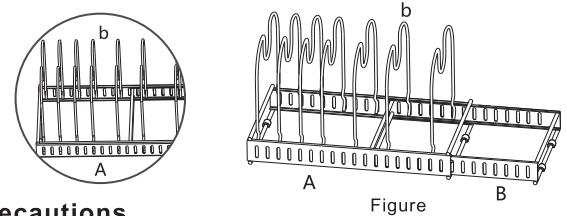
Step 3: Hold both ends of the bracket C with a small force and press it inwardly, and align the bent part at the bottom of the bracket with the hole of the main frame to complete the bracket installation, as shown in Figure A ;



Figure

Figure

Step 4: Adjust the mounting position of the bracket according to the spacing of the objects



Precautions

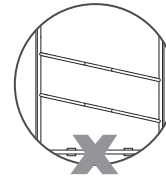
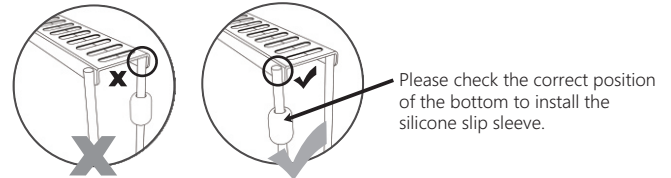


Figure A

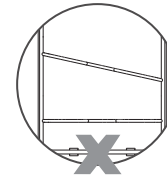


Figure B

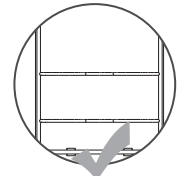


Figure C