



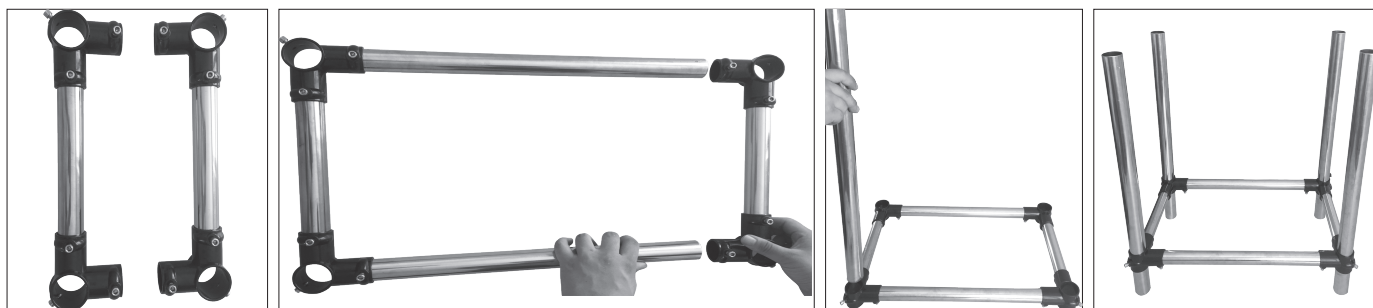
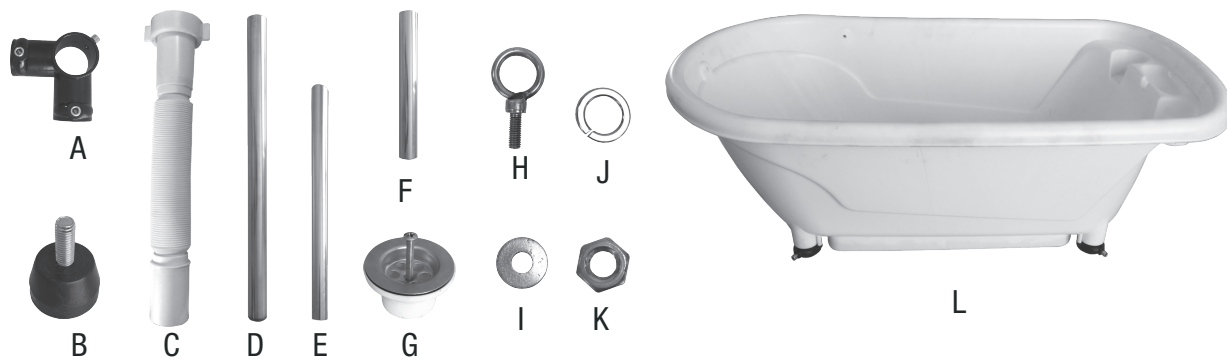
TP4115 47 • Master Equipment Bathe & Go Grooming Tub Assembly Instructions

Parts List

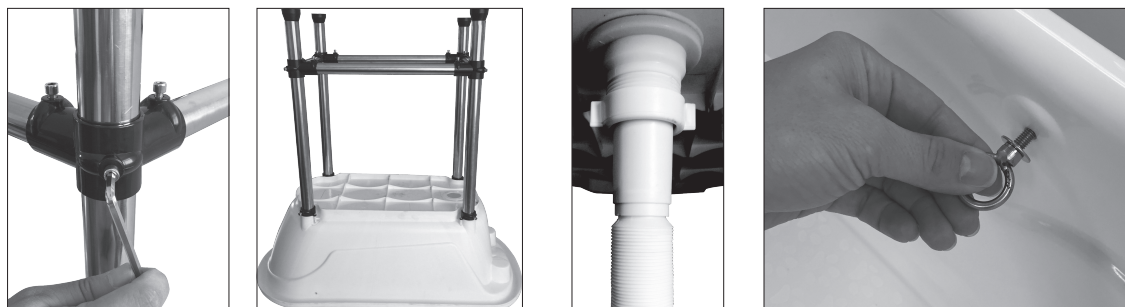
- (A) Plastic Tee Joints (4)
- (B) Leg Levelers (4)
- (C) Drain Hose (1)
- (D) Legs (4)
- (E) Cross Bars, Long (2)
- (F) Cross Bars, Short (2)
- (G) Drain (1)
- (H) Eye Bolts (3)
- (I) Washers (6)
- (J) Lock Washers (3)
- (K) Nuts (3)
- (L) Tub Basin (1)

Tools Required:

- Allen Wrench (Included)
- Adjustable Wrench (Not Included)



1. Attach the four Plastic Tee Joints (A) to the ends of the Short Cross Bars (F).
2. Attach the four Plastic Tee Joints (A) to the ends of the Long Cross Bars (E).
3. Insert the four Legs (D) into the four Plastic Tee Joints (A).



4. Adjust the Plastic Tee Joints (A) to the proper height and tighten them, using the allen wrench provided.
5. Attach the base structure to the Tub Basin (L) and tighten the Legs (D). Attach the Leg Levelers (B) to the Legs (D).
6. Connect the Drain Hose (C) to the Drain (G).
7. Slide Eye Bolt (H) through Washer (I), then insert into one of the three holes at the rounded end of the Tub Basin (L) from the inside. Slide Washer (I) and Lock Washer (J) over the end of the installed Eye Bolt (H). Screw Nut (K) onto the end of the installed Eye Bolt (H) and use an adjustable wrench to tighten until secure. Repeat step for remaining two holes.



Finished Assembly

TIPS:

1. Do not place the tub near or in fire, to prevent melting or distortion.
2. Store the tub in a cool, dry place.
3. This tub is for bathing pets only.

CARE INSTRUCTIONS

Rinse thoroughly after bathing pet. Make sure tub is clean and dry after use. Do not use harsh or abrasive cleaners, bleach, or tools with metal or textured parts, as these can scratch or damage the tub.

LIMITED WARRANTY

This Master Equipment™ Bathe & Go Grooming Tub is warranted against defective material or workmanship for one year from the date of purchase. Any Master Equipment™ product that is determined to be defective in material or workmanship during the warranty period will be replaced without cost to the purchaser for parts or labor. Please contact PetEdge Customer Service at 1-800-638-5754 regarding any defective product. PetEdge will not be liable under this warranty for any defect, failure, or malfunction of this product caused by normal wear, abuse, misuse, or unauthorized adjustments or repairs. PetEdge will not be liable for any incidental or consequential damages of any type. Any implied warranty is limited to the one-year period provided in this express warranty. Some states do not allow limitations on how long an implied warranty lasts or exclusion or limitation of incidental or consequential damages, so the above limitations or exclusions may not apply to you. Warranty is void if product has been modified in any manner, repaired by anyone other than PetEdge, or has been subject to unreasonable use. Warranty is valid in the United States.

Date Purchased: _____

Manufactured for / Fabricado para / Fabriqué pour
©Tops Pet Products, Beverly, MA 01915
Manufactured in / Fabricado en China / Fabriqué en Chine

TP4115 47 Master Equipment™ Bathe & Go Grooming Tub