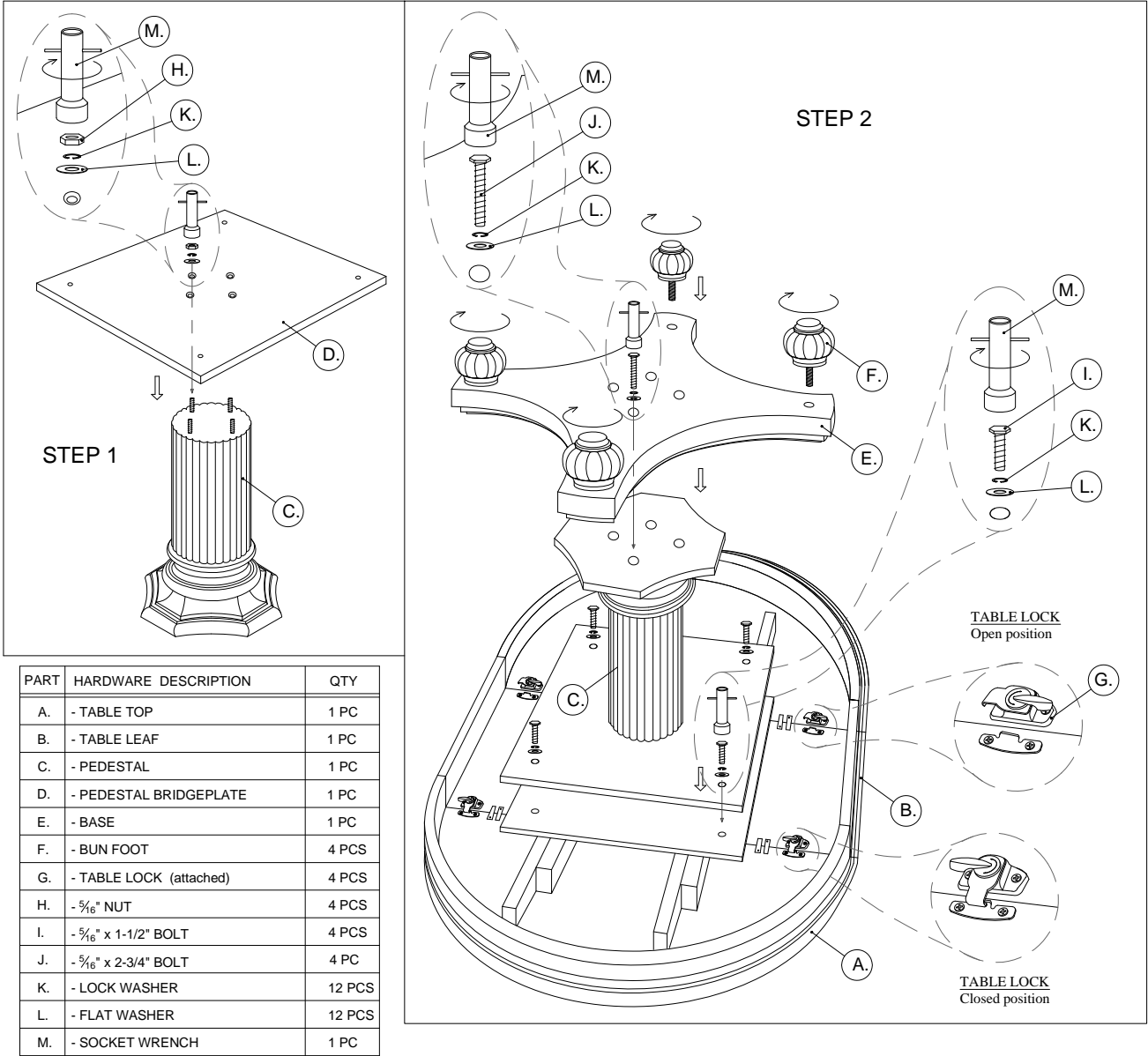


ASSEMBLY INSTRUCTIONS
531-870 Rectangular Dining Table



STEP 1 – Attaching Pedestal Bridgeplate to Pedestal

1. Place pedestal (C) on flat surface so that end with threaded rods is on top. Place pedestal bridgeplate (D) onto pedestal so that holes in bridgeplate align with threaded rods on pedestal. Use socket wrench (M) to attach bridgeplate to pedestal with flat washers (L), lock washers (K), and nuts H). Tighten nuts securely so that there is no movement in bridgeplate.

STEP 2 – Attaching Pedestal, Base, and Feet to Table

1. Place table top (A) upside-down on non-marring surface.
2. Place assembled pedestal bridgeplate on top of table bridgeplate so that holes in both bridgeplates are aligned. Use provided wrench (M) to attach bridgeplates together with (4) Flat Washers (L), (4) Lock Washers (K), and (4) 1-1/2" long bolts (I). Tighten all bolts securely.
3. Place base (E) onto pedestal so that holes in base align with holes in pedestal. Use provided wrench (M) to attach base to pedestal with (4) Flat Washers (L), (4) Lock Washers (K), and (4) 2-3/4" long bolts (J). Tighten all bolts securely.
4. Insert bun foot (F) into hole in base and twist foot clockwise until tight. Repeat for other (3) feet.
5. Return assembled table to an upright position.

To Attach Leaves:

1. Open table locks (G) on underside of table, located between half-tops on each side.
2. Pull on one end of table to separate half-tops. Open table enough to insert leaf.
3. Place table leaf between half-tops so that pins on leaves align with holes on half-tops.
4. Push table on each end until fully closed.
5. Close table locks on underside of table between each leaf and half-top.

For additional consumer assistance please contact your Lexington dealer or call our Consumer Services Department at 1-336-474-5300, Monday-Friday, 8-5 Eastern