

IMPORTANT

Before pairing your lock, please reset your lock and verify if the original master code **123456** works.

Then please turn on the Bluetooth in your phone's settings, wake up the keypad screen by touching it with your palm and keep the screen always on during the pairing.

HOW TO PAIR YOUR LOCK

HOW TO REGISTER

STEP

1

Download "DDLock" App in Google Play or App Store



Scan QR code to download DDLock App



STEP

2



Tap on register to get started.

STEP

3



Fill out the information and tap "Get Code". The email inbox you registered will be sent a verification code to verify your account. Put the code you received, tap on "Register" to complete.

Notes:

The DDLock App is required to operate the lock. After the lock is properly installed, make sure this step is performed by the lock owner.

PAIRING YOUR LOCK

Notes:

You may need to touch the keypad screen to wake up the keypad.

After pairing successfully, the master code will be changed to a random 7 digit number, and you can change it to your own master code in the App (Settings > Basics > Admin password).

STEP

1



Tap on "☰"

STEP

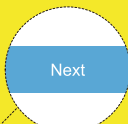
2



Tap on "+ Add Lock".

STEP

3



Tap on "Next".

STEP

4



Tap on "+"

Installation Tips



IMPORTANT

Refer to the 「step 1」 to learn the door is right handed or left handed.

Before tighten the interior assembly screws, test if it's able to move the thumb turn to lock/unlock. If not, please go back to 「step 2」 and reinstall.

If the direction of the slide swith is set incorrectly, it also can be changed in the DDLock App. (Settings > Door opening direction)

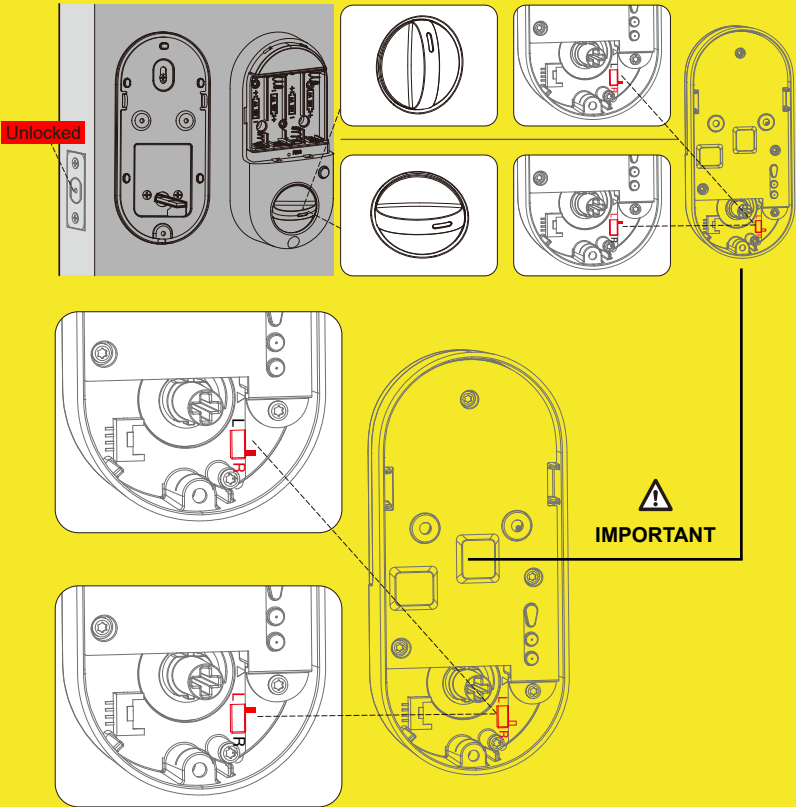
STEP1



Right handed door



Left handed door



Right handed door

Move the slide switch to "R"
Turn the thumb turn to the Vertical position

Left handed door

Move the slide switch to "L"
Turn the thumb turn to the Horizontal position.