

Vineyard dining table wheel

by Ramón Esteve

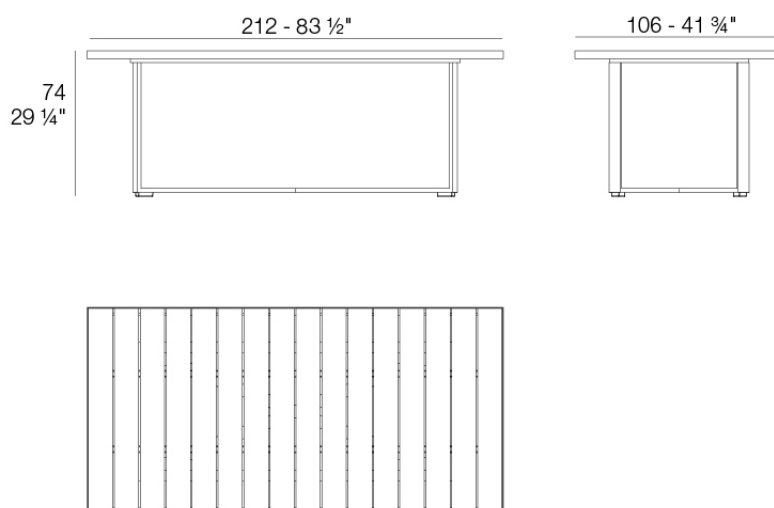
The Vineyard collection, designed by Ramón Esteve, captures the essence of Mediterranean style, combining elegance and comfort in each of its pieces. Inspired by vineyards and outdoor living, this collection is perfect for creating relaxed and welcoming environments.



Info

Description

Weight: 32 Kg



Versión con patas
Leg version

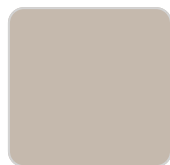
Finishes

finishes

ALUMINIUM
Ref. 54505ZSU



white



ecru



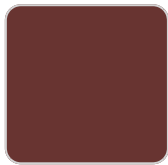
smoked



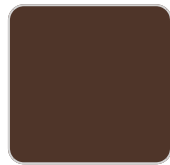
tortora



cream



garnet



brown



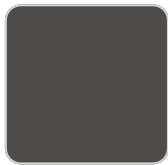
green



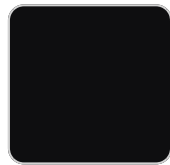
blue



gray



anthracite



black

panel/top

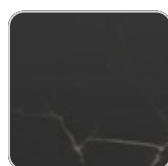
Solid Core
Ref. 54505AA



ecru stone



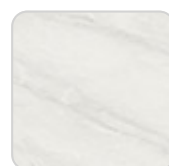
tortora stone



black stone



gray stone

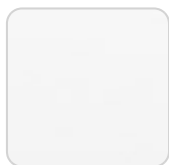


white stone

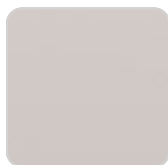
VONDOM



smoked



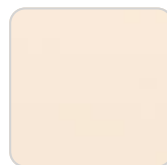
white (white edge)



ecru



tortora



cream



garnet



brown



green



blue



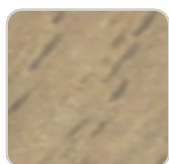
anthracite

Solid Core wood

Ref. 54505AA



oak1



oak2

Teak

Ref. 54505AA



natural teak



weathered teak

Ambients

