

## Features

- Open shelf offers easy access to storage, while interior shelf provides ample space for extra toilet paper
- Three-way adjustable slow-close door hinges for easy cabinet access
- Finish-matched 10"-deep cabinet interior
- Customize your storage with optional accessories such as floor liners, drawer organizers, and perfectly sized containers (sold separately)

## Material

- Solid wood and moisture-resistant MDF
- Painted exterior

## Installation

- Easy installation – no special tools required

## Required Products/Accessories

- K-29747 Protective floor liner for 24" cabinet
- K-33529 Cabinet knob



## Codes/Standards

EPA TSCA Title VI/CARB P2


## KOHLER® One-Year Limited Warranty

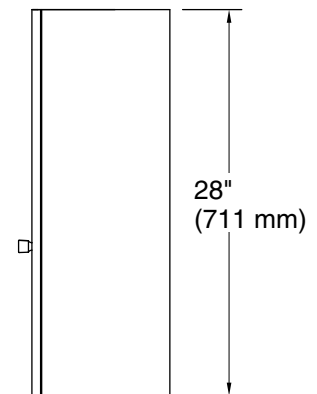
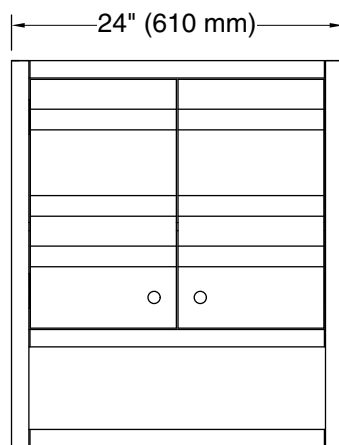
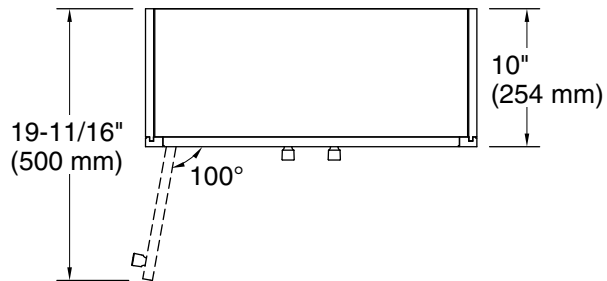
See website for detailed warranty information.

## Available Colors/Finishes

*Color tiles intended for reference only.*

### Color Code Description

	0	White
---	---	-------



## Technical Information

All product dimensions are nominal.