

ASSEMBLY INSTRUCTIONS

NOTE: Only the technical personnel can be allowed to fix and maintain.

IMPORTANT!

Make sure that the power is switch off at the electricity mains supply before commencing work.

FIXING INSTRUCTIONS

1. Wire drawing lampshade (18) will be fixed on the Main body pipe (17) above, it fixed hornhood (16), and screw on the crystal rings (7).
2. Take out screw (4) and rotate it into crystal lifting ring (7) (at least 6mm) and then tightened with washer (6) & hexagonal nut (5).
3. Rotate the one nut of screw (4) till close to the first nut and then rotate screw (4) into batten (13). Make sure screw (4) should go through batten (13).
4. Use outlet box screws (14) to fix batten (13) on outlet box (1).
5. Take out ring cover (9) from crystal lifting ring (7) and then let the canopy (8) through crystal lifting ring (7). Adjust the crystal lifting ring to a certain height.
6. Tighten the nut to fix on batten (13) in the right position.
7. Ground Connection (See picture 1): there are one tapping hole & two dimples.
8. Find the supply ground wire (2) on the green ground screw (15) and then put it into tapping hole. Connect the fixture ground wire (3) with supply ground wire (2) by connecting terminal (12). Caution: DO NOT connect ground wire with supply power wire.
9. Connect fixture supply wire (10) with power supply wire (11). Caution: Remember distinguish the positive and negative charges. (See picture 2)
10. Push canopy (8) up to the ceiling.
11. Attach ring cover (9) on crystal lifting ring and fix canopy (8) as well.
12. Put shade (18) on holder and tightened with out ring.
13. Screw bulb in the holder.

REPLACEMENT BULB

Do not exceed the maximum wattage.

Light bulbs recommended: E12 6 x 60W Max. Type B.

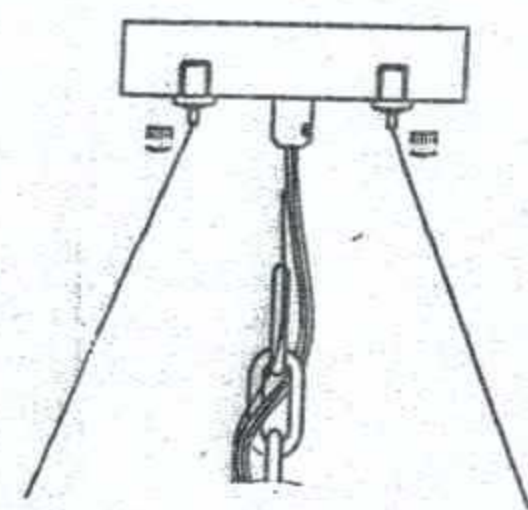
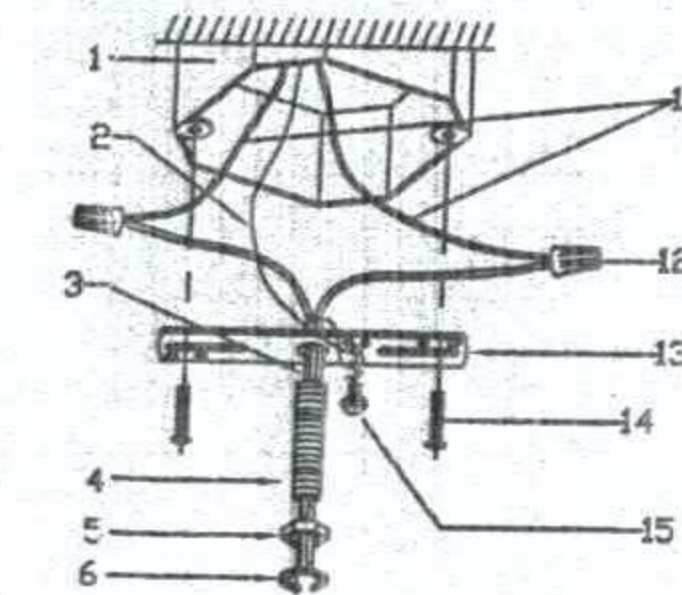
CLEANING CARE

Clean with a soft dry cloth.

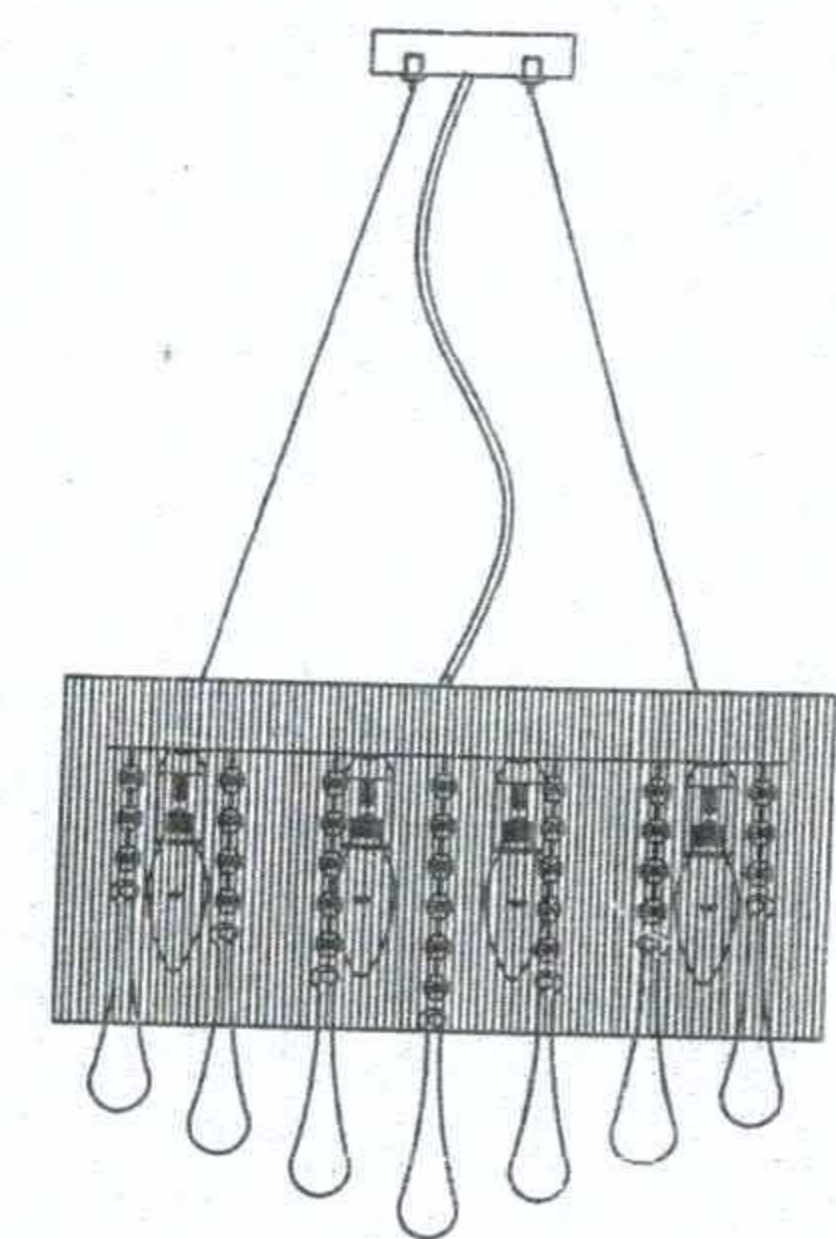
SAFETY INFORMATION

The lamp used must in rated voltage, and do not touch the bulb with bare hands. Always switch off the electricity supply and allow to cool for 10 minutes before changing the light bulbs.

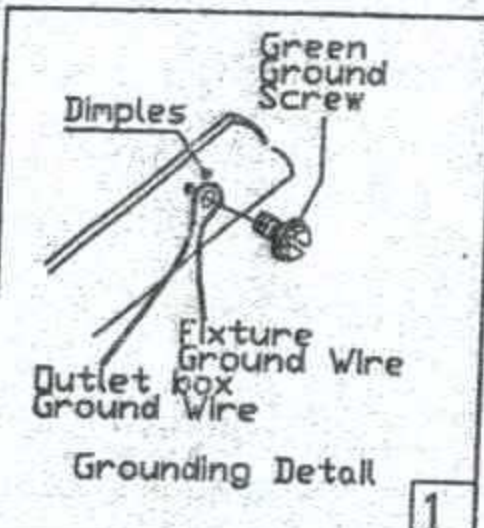
If the external cables have been damaged, Pls change or repair by manufacturer or service agency or professional electrician, In order to avoid the danger.



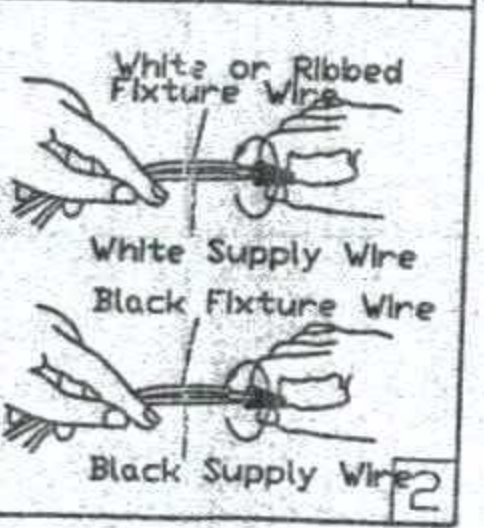
B



D

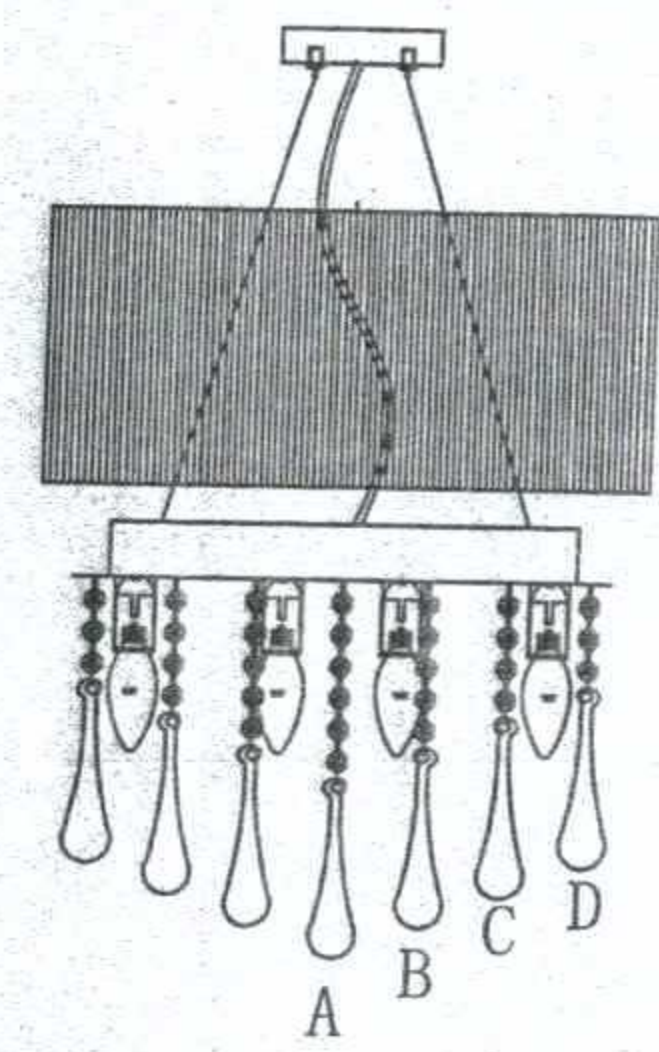


1



2

A



D-16PCS

C-8PCS

B-4PCS

A-1PCS

C