



# Wood Fence Kit Installation Guide

**Need help? Text us the  
picture of your problem**

v072324



# You made the right choice of railing!



**Cost-Effective**



**Safe & Durable**



**Quick to Install**



**Easily Extendable  
(Modular)**



**Time Required**

**Ground attachment:**

**wood - 20+ minutes**

**concrete - 60+ minutes**



**Tools Required**

**An electric drill/hammer**

**An impact drill is preferred (although not required) for installing the concrete bolts for concrete steps, lag screws for wooden steps, or other ground attachments.**

# Means and Methods Disclaimer

In no event shall *CR Fence & Rail* have any responsibility, control over, charge of, responsibility, or liability for the means, methods, techniques, sequences, or procedures, or for safety precautions in connection with the installation of the railing, since these are solely CM/GC's, Subcontractor's, and Owner's responsibilities.

Each installation site differs widely ranging from the construction & condition of attachment points, local building & safety code, local construction code, and local means & methods.

*CR Fence & Rail's* installation guide (whether it be in text, illustration, video or in support discussion) constitute for ideal installation condition. There is no ideal installation in real life. There is no substitution for consulting a local licensed contractor, architect, engineer, nor code inspector.

*CR Fence & Rail's* installation hardware and tools are provided as building material and does NOT constitute as the specific nor final installation hardware. Once again, you and your installer must make the final on-site determination to the specific means and methods of installation appropriate for your installation.

Following *CR Fence & Rail's* instruction does NOT constitute as proper installation as you and your installer must make the final means & method determination. Improper installation can lead to failure of rail system which can cause serious injury.



**Please make sure the hardware and tools we provided will be right for your install (READ means & methods disclaimer). IT IS POSSIBLE YOU NEED DIFFERENT HARDWARE & METHODS. Please take your time to do your installation. If you are unsure or uncomfortable with the installation, we highly recommend hiring a licensed and bonded contractor.**

**We've made it easy for  
you to install your post!**



**Scan this QR code  
for a detailed video  
explanation of how  
to install your new  
handrail correctly.**

# Masonry Tools & Hardware Explained

FOR CONCRETE

**5/16" (8mm)  
Anchor Bolt**



**5/16" (8mm)  
Masonry Drill Bit**



*\*SDS+ available  
upon request*

**Diamond Core  
Drill Bit**



*For hard stone  
\*available upon request*

**Note:** This will be a tight fit. In fact, the specification calls for the drill bit and anchors to be the same size. Some installers use a 3/8" drill bit to make the installation easier, and other installers wiggle the drill bit to bore the top of the hole slightly bigger. (We are aware of the tight fit and we must only recommend using our masonry drillbit without wiggling).

### **WARNING**

*The strength of the anchor is dependent on the hole size & concrete integrity. A hole that's too big or concrete that's not up to standard grade can make the anchor wiggle or possibly come out. This is what can cause a rail to fail & fall over.*

# What's in your Kit?

## 6' H Wood Fence Kit

### ANCHOR KIT



8 Wedge Anchors



8 Lag Screws



10 Flat Washers



2 Metal Post Cover



2 Metal Post Cap

### Fence Parts



2 Plastic Guides



32 Self-drill screws



4 Wood screws

### CORE KIT



1 Wood Pilot Hole Drill Bit



1 Masonry Drill Bit



1 Drill Bit Extender  
(for Hex Bit and Nut Holder)



1 Depth Measuring Pencil



1 Ruler



1 H4 Hex Bit



1 Hex Nut/  
Bolt Driver



1 Bubble Leveler



4 Fence Channels



2 Line Posts



# What's in your Kit?

## 3' H Wood Fence Kit

### ANCHOR KIT



8 Wedge Anchors



8 Lag Screws



10 Flat Washers



2 Metal Post Cover



2 Metal Post Cap

### Fence Parts



2 Plastic Guides



16 Self-drill screws



4 Wood screws

### CORE KIT



1 Wood Pilot Hole Drill Bit



1 Masonry Drill Bit



1 Drill Bit Extender  
(for Hex Bit and Nut Holder)



1 Depth Measuring Pencil



1 Ruler



1 H4 Hex Bit



1 Hex Nut/  
Bolt Driver



1 Bubble Leveler



4 Fence Channels



2 Line Posts

# Complete your fence with ease!

Finish your setup with  
our Wood Composite  
Panels designed to  
complement your  
Wood Fence Kit.

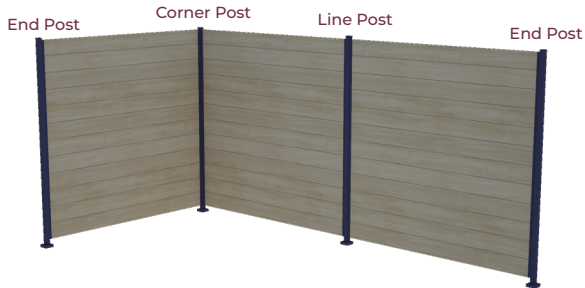


[www.fencerail.com/wcp](http://www.fencerail.com/wcp)

# BEFORE INSTALLATION

## Plan and Measure

Determine the layout of your fence. Mark the positions of the End Post, Line Post, and Corner Post. Ensure the distances match the width of the fence material you are using.



## Ready to extend your fence?

Scan the QR code below to purchase **Wood Fence End Post Kit**. Perfect for finishing your fence layout or using as corner posts, it's the ideal way to enhance your setup with ease!

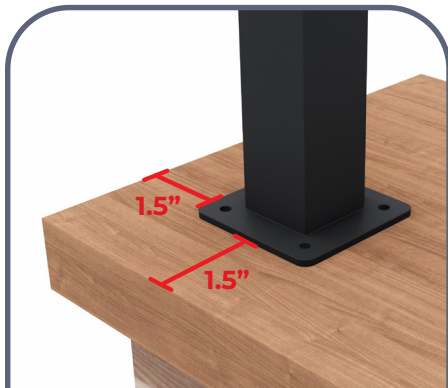


[www.fencerail.com/wfk](http://www.fencerail.com/wfk)

# 1

## Position and Mark Holes

**Position the posts.  
Ensure that the  
baseplate is 1.5" (4 cm)  
away from the edges.**



**Once properly aligned, mark the locations of the baseplate holes on the surface.**



# 2

## Pre-drill Holes

**Using an electric drill, drill pilot holes following the marked points.**

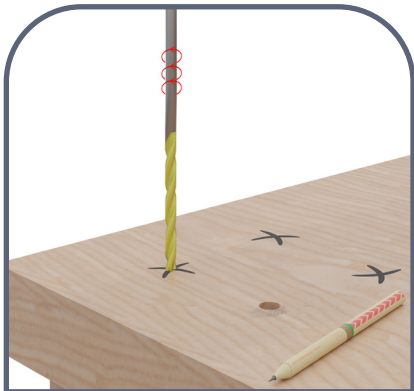
### FOR CONCRETE

*Please adhere to local & statewide building code. Recommended distance from the edge is based on standard-grade concrete (2500 psi).*

*If your concrete is 'high-strength' concrete, the edge distance can be reduced. (See ICC Chapter 19, Table 1908.2)*

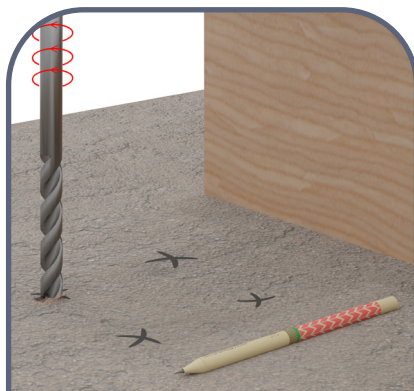
FOR WOOD

**Smaller drill bit  
(Continue to Step 5)**



FOR CONCRETE

**Larger drill bit  
(Continue to Step 3)**



# 3

## Ensure Correct Depth

For Concrete Anchor

FOR CONCRETE

**Use the CR Handrail pencil to measure the depth of the hole with the flat end of the pencil.**

*Note: This is only for rough measurements.  
This is to ensure the hole is deep enough.*

*For Wood,  
please go  
straight to  
Step 5*

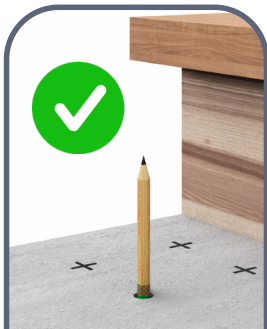


*Ensure that the holes are deep enough to avoid encountering serious issues later on.*

Hole NOT deep enough  
Keep drilling deeper



**PERFECT DEPTH**



Hole TOO DEEP!  
Careful NOT to insert  
Anchor too deep



# 4

## Install Anchors

FOR CONCRETE



**Once the holes are made and depth verified, hammer the anchors into the holes.**



*Tip: To avoid pushing the anchor too deep, stack two washers and two nuts at the end of each anchor before hammering.*

## Periodically Double Check!

*Place the post on the anchor and ensure the nut has enough thread for secure tightening.*



# 5

## Secure Post to Ground

NUT SOCKET



BIT EXTENSION



Use the nut socket & bit extension

FOR WOOD



LAG SCREW

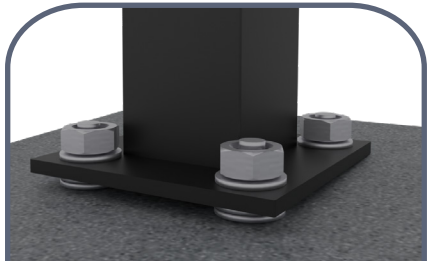
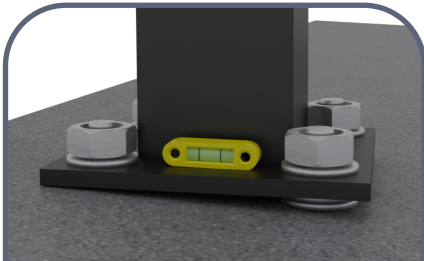
FOR CONCRETE



WEDGE ANCHORS

## What if the post is not level?

If the ground is uneven, shim the baseplate with the extra washers to level the post.



**FOR WOOD**



**1. Align the posts above the pre-drilled holes.**

**2. Secure each post by installing a washer and lag screw, one at a time.**

**3. Once all posts are installed, double-check each to confirm they are firmly tightened.**

*Tip: Turn on your drill's hammer or impact feature for better performance if it has one.*

## FOR CONCRETE

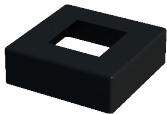


1. Remove all nuts and washers, then place the posts on the anchor bolts. Attach a washer and nut to each post, one after the other.
2. Tighten a washer and nut by hand on each anchor bolt for a secure connection.
3. Use an electric drill to firmly tighten the nuts. Make sure the drill's hammer or impact setting is off to prevent damage.

# 6

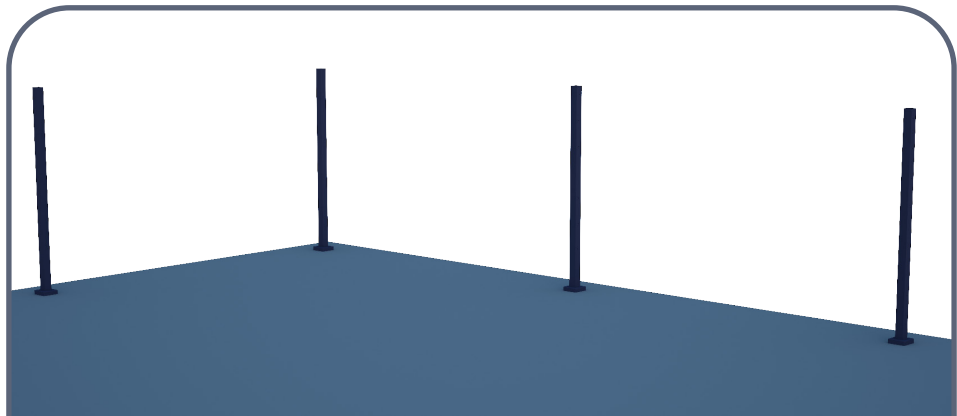
## Attach Post Cover

Insert the Metal Post Cover into the Post by sliding it in.



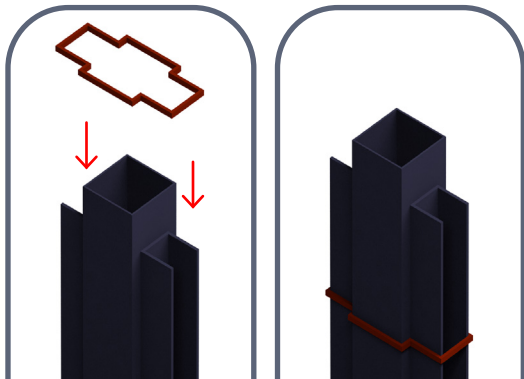


*Ensure the posts are securely installed before proceeding to the installation of the Fence channels*

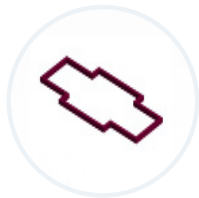


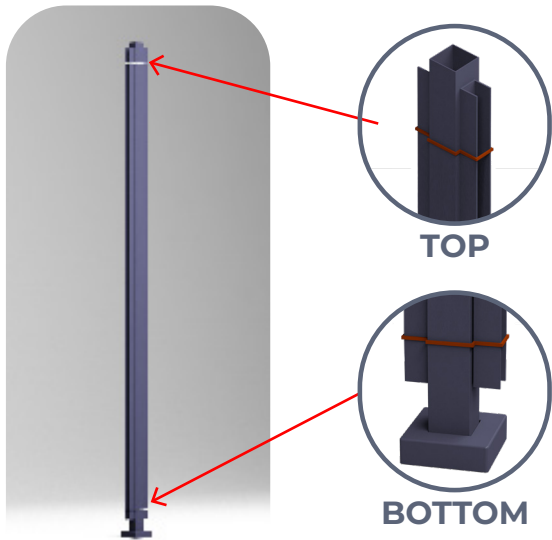
# 7

## Align Fence Channel to Post



**Insert Plastic Guide to  
align Fence Channel  
to Post**





*Position one at the top and one at the bottom of the post. This ensures the Fence Channel stays centered with the post.*

# 8

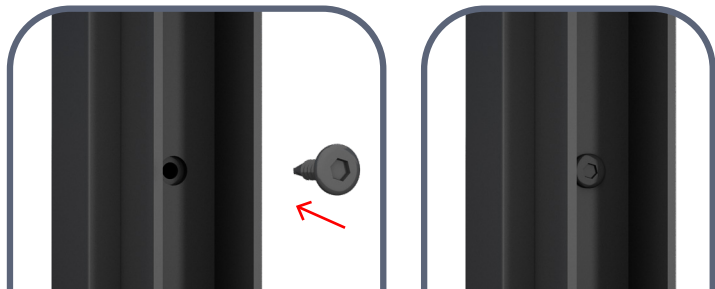
## Attach Fence Channel to Post

H4 HEX BIT



*The Fence Channel and Posts feature pre-drilled holes. Ensure these holes are properly aligned during installation.*

**Screw through the holes in the Fence Channel to secure it to the post.**



*Remove the Plastic Guides once the Fence Channel is completely secured to the post.*

# 9

## Insert Wood Planks



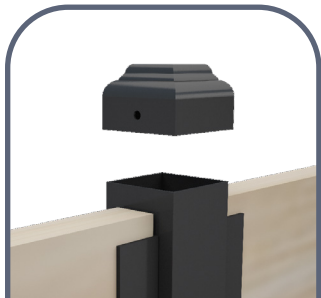
**Insert the wood planks into the Fence Channel and securely screw the top plank in place using the wood screws provided.**



# 10

## Attach Post Caps

Screw on the Post Caps to cover the top of the posts.







**Great  
JOB!**

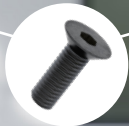


Congratulations on  
successfully completing  
the installation of your  
Wood Fence Kit!



**Rail kits for your  
home's every need!**

**For BGR4R and  
BGR6R Guardrails**



**Ensure the top and bottom  
rail has just the right spacing  
between posts**

**CR Fence & Rail's  
Specialty Post**



**Included**



**NOT included**

# 10 Years' Free Warranty

We've doubled our support from 5 years to 10, showing our commitment to you and the trust we have in our railings for outdoor steps.

To view our full warranty policy, visit:  
**[www.fencerail.com/warranty](http://www.fencerail.com/warranty)**






## Need help?

- Connect Multiple Railings
- Technical Drawings
- Complicated Installations
- Installation Error
- Missing Parts

Text with Photos  
**(800) 420-0432**





Chi & Richard with family at San Diego Safari Park

## A heartfelt message from the owners of CR Handrail

Chi is an architect and Richard is in real estate construction. With the combined knowledge and expertise, Chi & Richard believe they can provide the best commercial grade railing product that can be installed by anyone. They want to take the time to say thank you. If you got the time, Chi, Richard & the CRH team love to see a photo or video of your installation!

- Chi & Richard from CR Handrail

**Your picture and  
video post helps those  
who are worried about  
the installation.**



Susanna P.



I was worried

Reviewed in Canada on October 12, 20

Size: 4 Steps **Verified Purchase**

I was a little worried that the handrail would be difficult to install. It comes with everything you could possibly need to install the railing. Hats off to the peo-

2 people found this useful



**SAFETY  
FOR ALL!**



**Help Us Make  
a Difference.**

**How can we  
make it easier  
for you?**



**Missing Parts?**  
[www.fencrail.com/parts](http://www.fencrail.com/parts)

## **Support**



**Text with Photos**  
**(800) 420-0432**



**WhatsApp**  
**(775) 324-8877**