

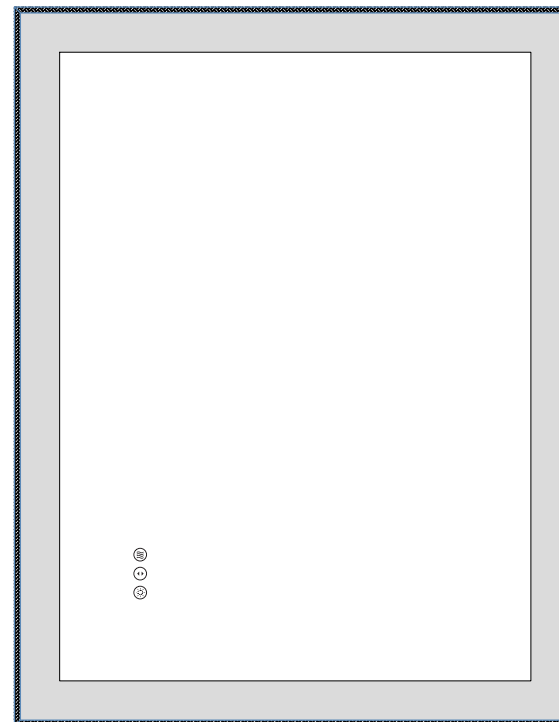
Meaning of Smart Lights

State of Smart Light	Meaning
White Light ON	Function is Working
Blue Light ON	Function Standby
Light OFF	Power OFF

Troubleshooting

Smart doesn't turn on / Defogging doesn't work	Open the cover of the power supply on the back of the mirror to test the power cables, tighten the cables if they are loose. (Please cut off the power firstly before testing the power supply and cables)
Part of light strip is fault	Firstly, please pull the outer silicone strip away and press the inner light strip inward. If it still doesn't work, need replace the strip light.
Memory function does not work	Please note: only when both the front and backlit are turned on simultaneously can there be memory function, and only the backlight or front lights have no memory function.
After using for a few month, the light doesn't work.	Please contact us to replace the power supply.

User Manual



Manufacturer: Guang Dong Kosmo Smart Home Devices Co., Ltd.
Address: No. 65, Linhai North Road, Shatian Town, Dongguan City,
Guangdong Province, China



Before Installation

Please Note Before Installation:

1. Please read all instructions carefully before assembling the item.
2. After opening the package, first check if there is transit damage or missing parts.
3. Please power the mirror with plug to test the mirror and each functions before installation.
4. Assembly by two or more adults is highly recommended.
5. Disconnect power before installing, adding or changing any components.
6. Ensure that the fixing location is able to take the weight of the complete fitting.
7. Keep the voltages between 110V and 120V. If the voltage exceeds 120V, please use transformer.
8. To connect the wires to electrical junction box, a qualified technician or electrician is highly recommended.
9. Before cleaning the mirror, make sure that the power supply is disconnected.
10. To ensure a better luminous effect of the mirror, it is recommended to remove the protective film from the edge of the mirror before use.
11. To ensure the agility of the touch screen function, it is recommended to tear the protective film in front of the mirror.

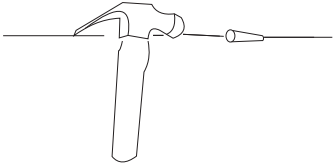
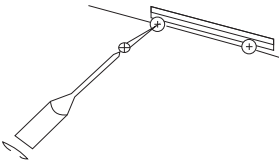
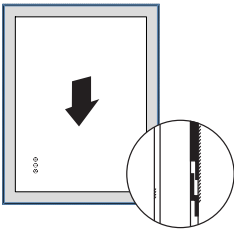
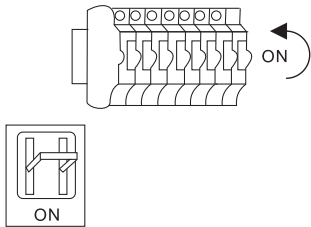
Specifications and Parameters

Product No	Size	Thickness	Touch Button	Color Temperature	Lumen	CRI	Power(W)	Input Voltage (V)	Weight (kg)
KM006-S3R12292UL	48"x36"	1.5"	3	3000/4000/6000	7125	82	80	100-120	11.31
KM006-S3R10181UL	40"x32"	1.5"	3	3000/4000/6000	5916	82	80	100-120	8.272
KM006-S3R9191UL	36"x36"	1.5"	3	3000/4000/6000	5916	82	80	100-120	11.23
KM006-S3R14969UL	60"x28"	1.5"	3	3000/4000/6000	7459	82	80	100-120	13.59
KM006-S3R12181UL	48"x32"	1.5"	3	3000/4000/6000	6648	82	80	100-120	12.88
KM006-S3R12177UL	48"x30"	1.5"	3	3000/4000/6000	6555	82	80	100-120	12.65
KM006-S3R10191UL	40"x36"	1.5"	3	3000/4000/6000	6288	82	80	100-120	12.1
KM006-S3R8191UL	32"x36"	1.5"	3	3000/4000/6000	5544	82	60	100-120	10.15
KM006-S3R7791UL	36"x30"	1.5"	3	3000/4000/6000	5446	82	60	100-120	9.74
KM006-S3R7191UL	36"x28"	1.5"	3	3000/4000/6000	5160	82	60	100-120	9.55
KM006-S3R6191UL	36"x24"	1.5"	3	3000/4000/6000	4788	82	60	100-120	8.12
KM006-S3R5171UL	28"x20"	1.5"	3	3000/4000/6000	3672	82	48	100-120	5.55
KM006-S3R14091UL	55"x36"	1.5"	3	3000/4000/6000	7769	82	100	100-120	16.09
KM006-S3R121101UL	48"x40"	1.5"	3	3000/4000/6000	7399	82	80	100-120	15.78
KM006-S3R10177UL	40"x30"	1.5"	3	3000/4000/6000	5804	82	80	100-120	10.55
KM006-S3R10161UL	40"x24"	1.5"	3	3000/4000/6000	5052	82	60	100-120	8.69
KM006-S3R6181UL	32"x24"	1.5"	3	3000/4000/6000	4423	82	48	100-120	7.12
KM006-S3R24192UL	96"x36"	1.5"	3	3000/4000/6000	11533	82	150	100-120	26.04
KM006-S3R21279UL	84"x32"	1.5"	3	3000/4000/6000	10008	82	150	100-120	21.26
KM006-S3R18292UL	72"x36"	1.5"	3	3000/4000/6000	9364	82	100	100-120	21.55
KM006-S3R15191UL	60"x36"	1.5"	3	3000/4000/6000	8172	82	100	100-120	17.98
KM006-S3R151101UL	60"x40"	1.5"	3	3000/4000/6000	8496	82	100	100-120	18.85
KM006-S3R18282UL	72"x32"	1.5"	3	3000/4000/6000	8980	82	100	100-120	19.51
KM006-S3R15377UL	60"x30"	1.5"	3	3000/4000/6000	7696	82	100	100-120	15.16
KM006-S3R182101UL	72"x40"	1.5"	3	3000/4000/6000	9705	82	100	100-120	23.06
KM006-S3R13874UL	55"x30"	1.5"	3	3000/4000/6000	7125	82	80	100-120	13.55
KM006-S3R214101UL	84"x40"	1.5"	3	3000/4000/6000	10864	82	150	100-120	26.08
KM006-S3R22497UL	88"x38"	1.5"	3	3000/4000/6000	11124	82	150	100-120	22.23
KM006-S3R9797UL	38"x38"	1.5"	3	3000/4000/6000	6376	82	80	100-120	12.92

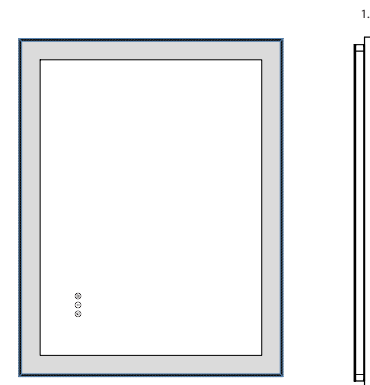
Please Notes:

Due to the workmanship production process of the items, the size error does not exceed 1-2 inches.

Installation Instruction

<p>Step 3</p>  <p>Knock the nail in.</p>	<p>Step 4</p>  <p>1. Tighten the screw to ensure the wall bracket stay sturdy on the wall. 2. Hang the mirror on the wall basket.</p>
<p>Step 5</p>  <p>When installing, pay attention to follow the direction of the switch (easier to operate) to install.</p>	<p>Step 6</p>  <p>Turn on the power switch.</p>

Check Functions



Before installation, please check to make sure these functions work properly:



Anti-fog Switch: After connecting the power, the anti-fog function is already turn on automatically. If you don't need to use it, just touch it to turn it off, to prevent wasting energy. The defogging will take effect within 10 minutes after its turned on , so you can turn it on 10 minutes before taking a bath.



Dim switch: The smart light supports 10% to 100% brightness adjustment, just long press the button. This button has memory function, the next time you open the mirror it will be in the same brightness it was in before it was last closed, which means that you don't have to touch the button each time.



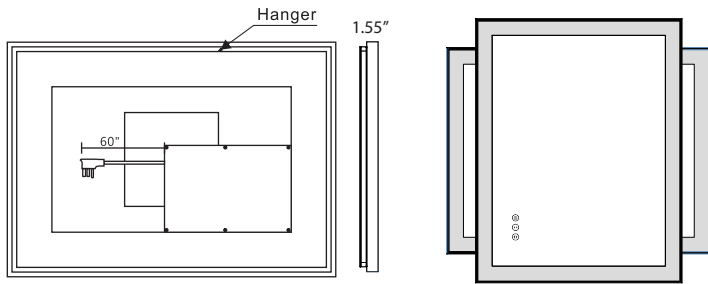
Color temperature switch: The front and back lights all have three color temperatures that can be switch (3000K / 4000K/ 6000K), just need to short press this button. And this button has a memory function as well.



Long press the anti fog button, and the indicator lights of the three switches will not light up. Short press the anti fog button, and the three switch lights will turn blue again (entering standby mode). In standby mode, press the corresponding buttons on the mirror to start working.

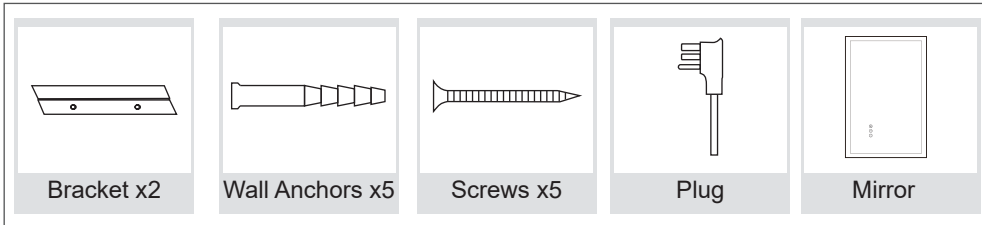
PS:To ensure the agility of the touch screen function, it is recommended to tear the protective film.

User Manual

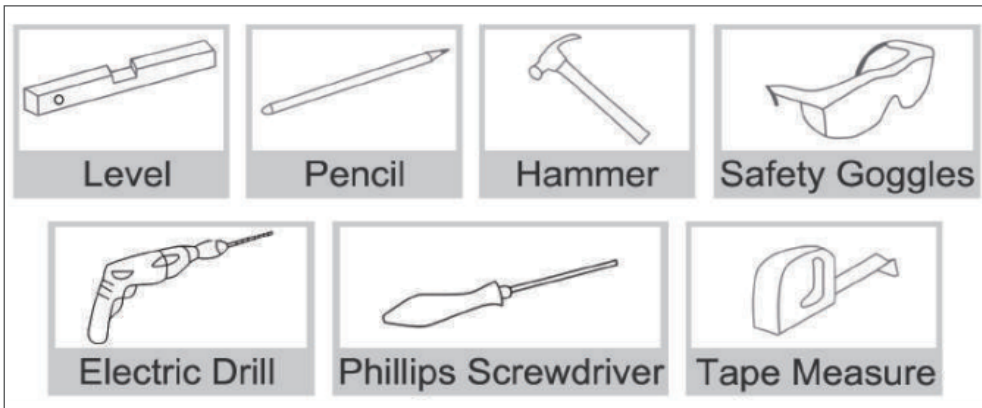


Horizontal/ Vertical Installation

PACKAGE CONTENTS



YOU MAY NEED THESE TOOLS



Installation Instruction

Method 1: Plug in	Method 2: Hardwire
<p>Insert the plug into the socket, keep the voltages between 110V and 120V. If the voltage exceeds 120V, please use transformer.</p>	<p>Cut the plug, connect the same color wire and tighten them (Disconnect power before hardwire).</p>
Step 1	Step 2
<p>Draw a straight line with a ruler to keep the mirror horizontal.</p>	<p>Drill 2 holes or 4 holes according to screws you received. (After installing, please tear the protective film of the mirror then to use.)</p>