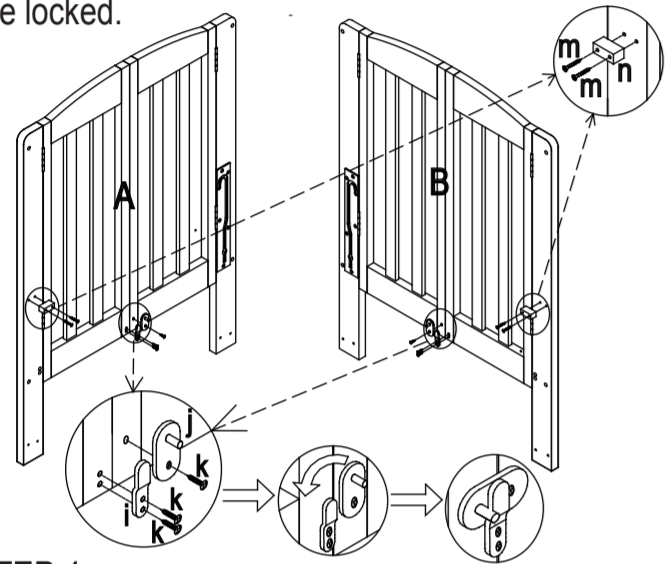


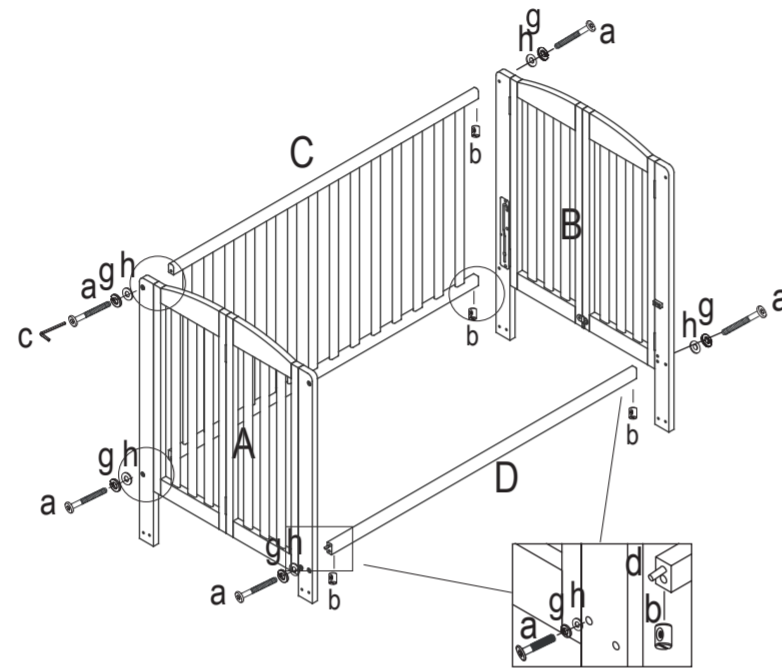
CAUTION ANY MATTRESS USED IN THIS CRIB MUST BE AT LEAST 51-5/8" (1310MM) BY 27-1/4" (690MM) WITH A THICKNESS NOT EXCEEDING 6" (150MM). THE CRIB CONFORMS TO APPLICABLE REGULATIONS PROMULGATED BY THE CONSUMER PRODUCTS SAFETY COMMISSION.



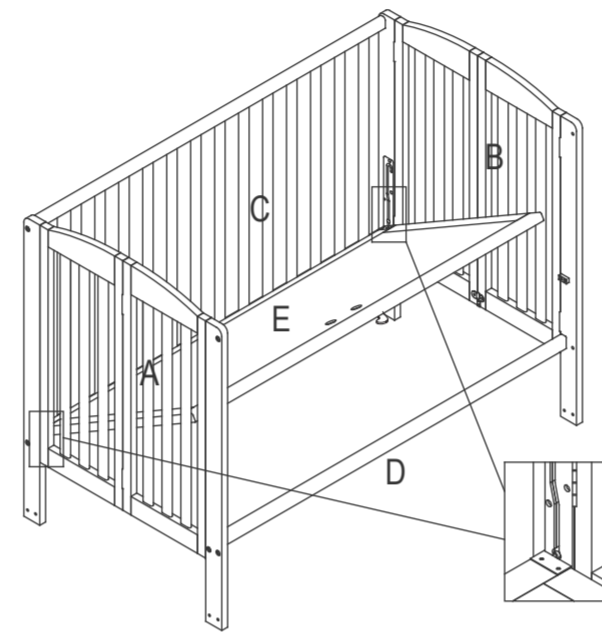
STEP 1
Assemble latch (i&j) to the headboard (A&B) by using 5/8" screw (k). Then assemble plastic block (n) horizontal to the headboard (A&B) by using 3/4" screw (m). Tighten screws using a phillips head screwdriver. Make sure that the latch on the bottom of each headboard (A&B) are locked.



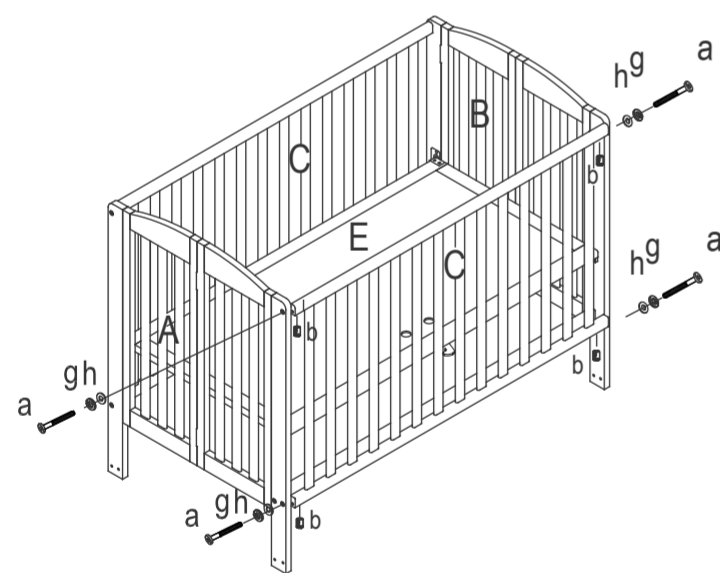
STEP 2
Connect rail (C) and stabilizer bar (D) to the headboard (A & B) by screws (a) and nuts (b), wood dowel (d), washer (g), washer (h). DO NOT fully tighten the bolts.



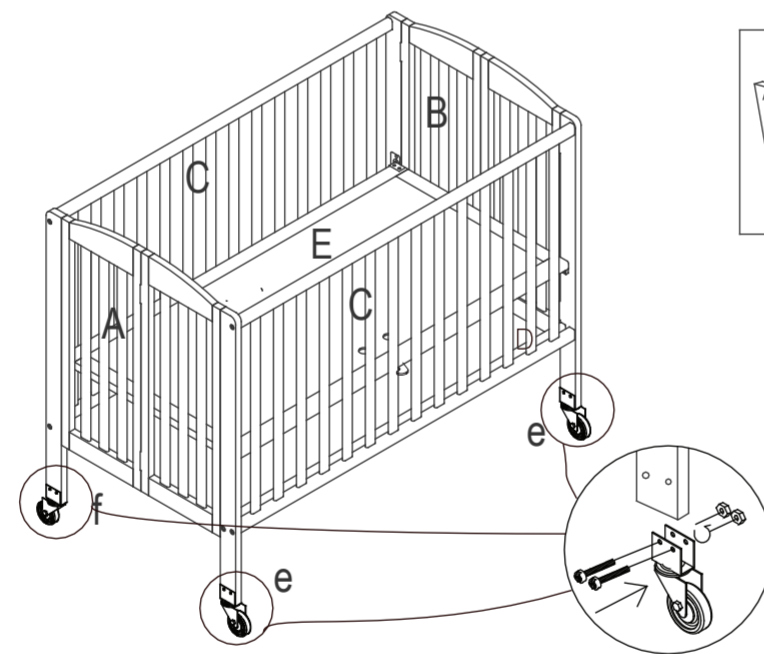
STEP 3
Slot in the metal pin into the notch of left and right headboard side corner post, then move up and down to adjust the mattress base into highest level.



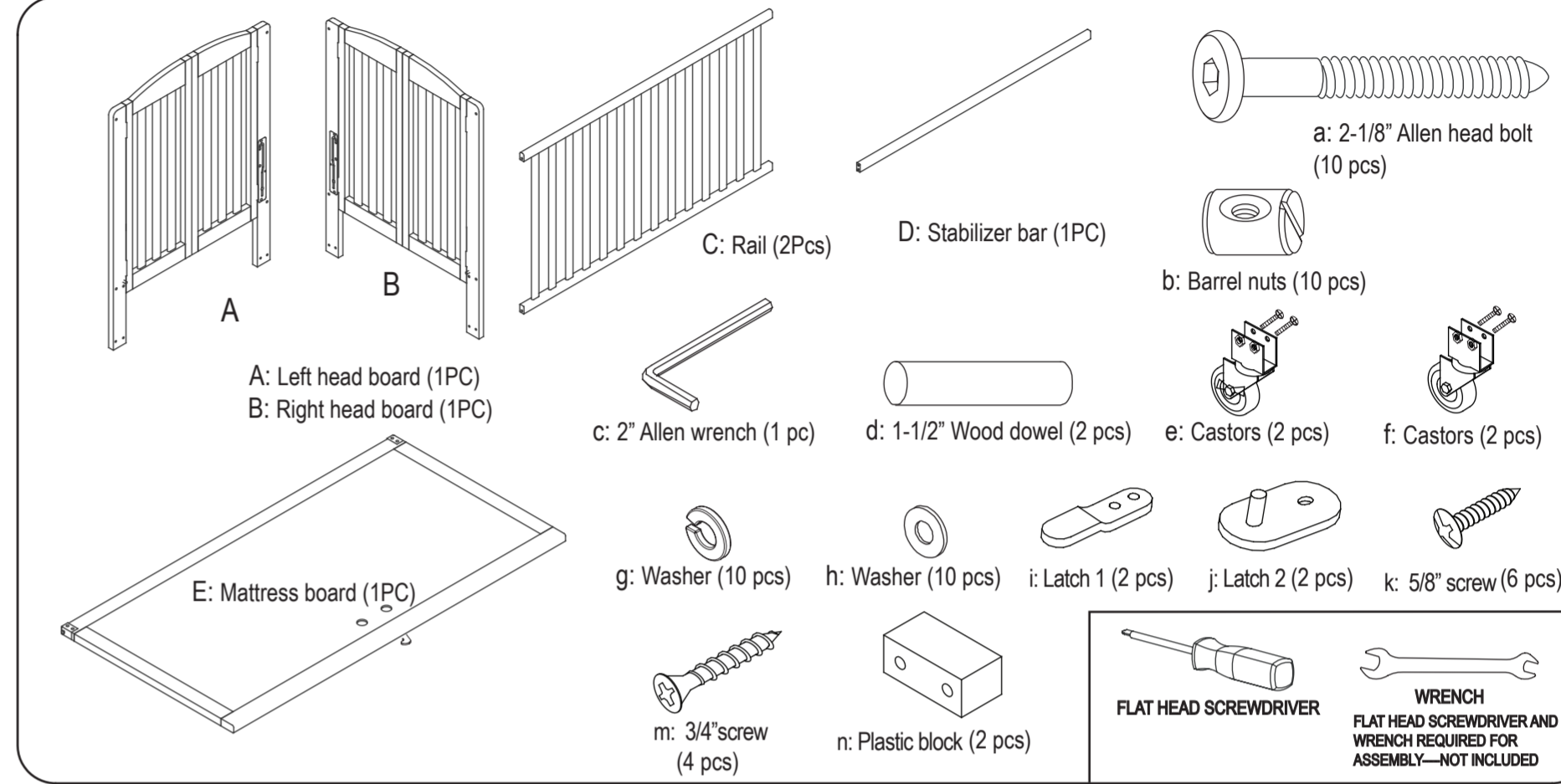
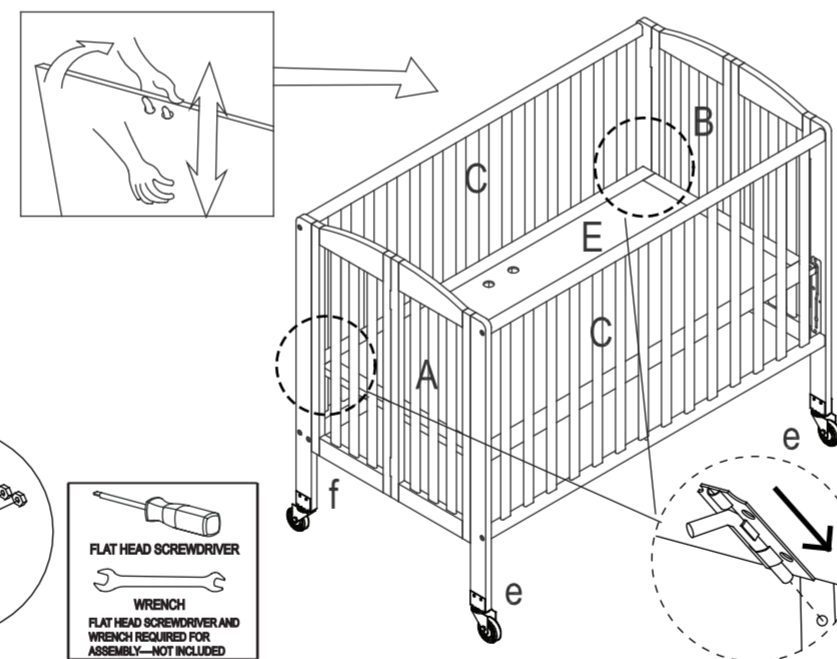
STEP 4
Connect rail (C) to the headboard (A & B) by screws (a), nuts (b), washer (g) and washer (h). THEN FULLY tighten all the bolts.



STEP 5
Assemble castors (e & f) to the leg bottoms on the leg on headboard (A&B). 2 castors (e) with brake are in the front. THEN add the mattress (F).



STEP 6
Select the desired level, and use both hands to lift up the mattress base, then adjust the level to your required height of the 2 level. Slide in the bolt underneath the mattress board (E) to keep the mattress support fixed.



⚠ WARNING !

- Failure to follow these warnings and instructions could result in serious injury or death. Read all instructions before assembling, keep instructions for future use. Upon completion of assembling, make sure all screws, bolts and fastening devices have been securely tightened.
- Never use this product if there are any loose or missing fasteners, loose joints, broken parts, or torn mesh/fabric. Check before assembly and periodically during use.
- Never substitute parts, the product including side rails, must be fully erected prior to use.
- Discontinue use of the product when child is able to climb out or reaches the height of 35in (900mm).
- Never place product near window where cords from blinds or drapes can strangle a child.
- When child is able to pull to standing position, set mattress/base to lowest adjustment position and remove bumper pads, large toys, and other objects that could serve as steps for climbing out. A child can trap parts of the body or clothing on loose fasteners.
- Never use plastic shipping bag or other plastic things as mattress covers because they can cause suffocation.
- CAUTION:** Any mattress used in this crib must be at least 27-1/4 inches (690mm) by 51-5/8 inches (1310mm), with a thickness not exceeding 6 inches (150mm), the dimensions of the mattress shall be taken from seam to seam or edge to edge where appropriate.
- Never use a water mattress with this product.
- Strings can cause strangulation! Never place items with a string around a child's neck, such as hood strings or pacifier cords. Never suspend strings over product or attach strings to toys.
- Infants can suffocate in gaps between a mattress and crib side which is too small. On soft bedding never add a mattress, pillow or comforter. Never place additional padding under an infant.
- To reduce the risk of SIDS, pediatricians recommend healthy infants be placed on their back to sleep, unless otherwise advised by your physician.
- If refinishing, use a non-toxic finish specified for children's products.
- To help prevent strangulation, tighten all fasteners. A child can trap parts of the body or clothing on loose fasteners. Follow warnings on all products in a crib. See head panel & mattress support for instructions and warnings.
- Replace teething rail if damaged, cracked or loose. Please note that the warning sticker is placed on the cribs to keep parents and caregivers informed it is a requirement by law under CPSC and ASTM. We do apologize for any inconvenience this may cause you.

- Follow below to fold the crib:
- take out the mattress (F)
 - take out the mattress board (E)
 - unlock the latch on the headboard
 - fold the crib

