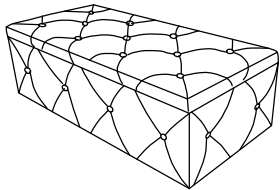


# ASSEMBLY INSTRUCTION

## PARTS LIST



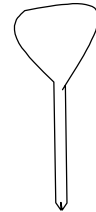
1. Storage Bench X 1



2. Legs X 4

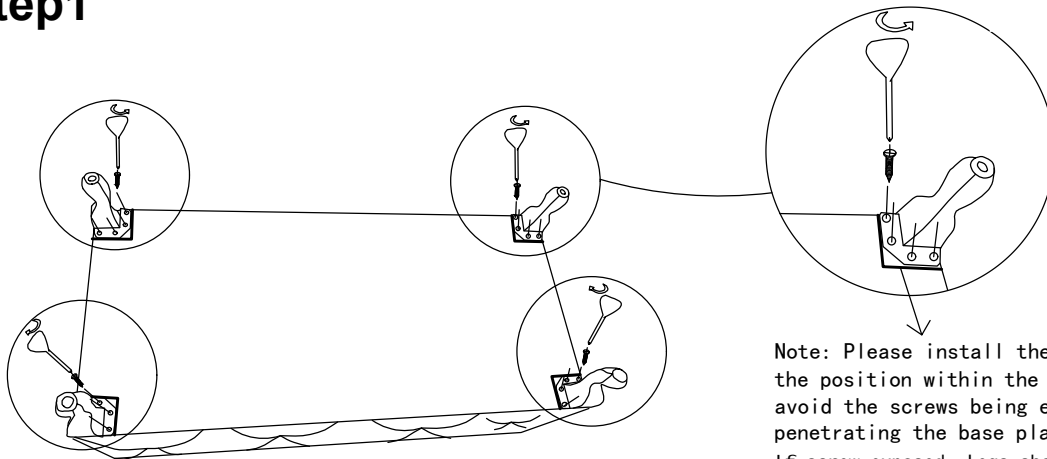


3. Screw X 16



4. Allen Key X 1

## Step1



Note: Please install the metal feet in the position within the drawing line to avoid the screws being exposed when penetrating the base plate.  
If screw exposed, legs should be more close to edge, and screw to be tilted inward.

## Complete Assembly

