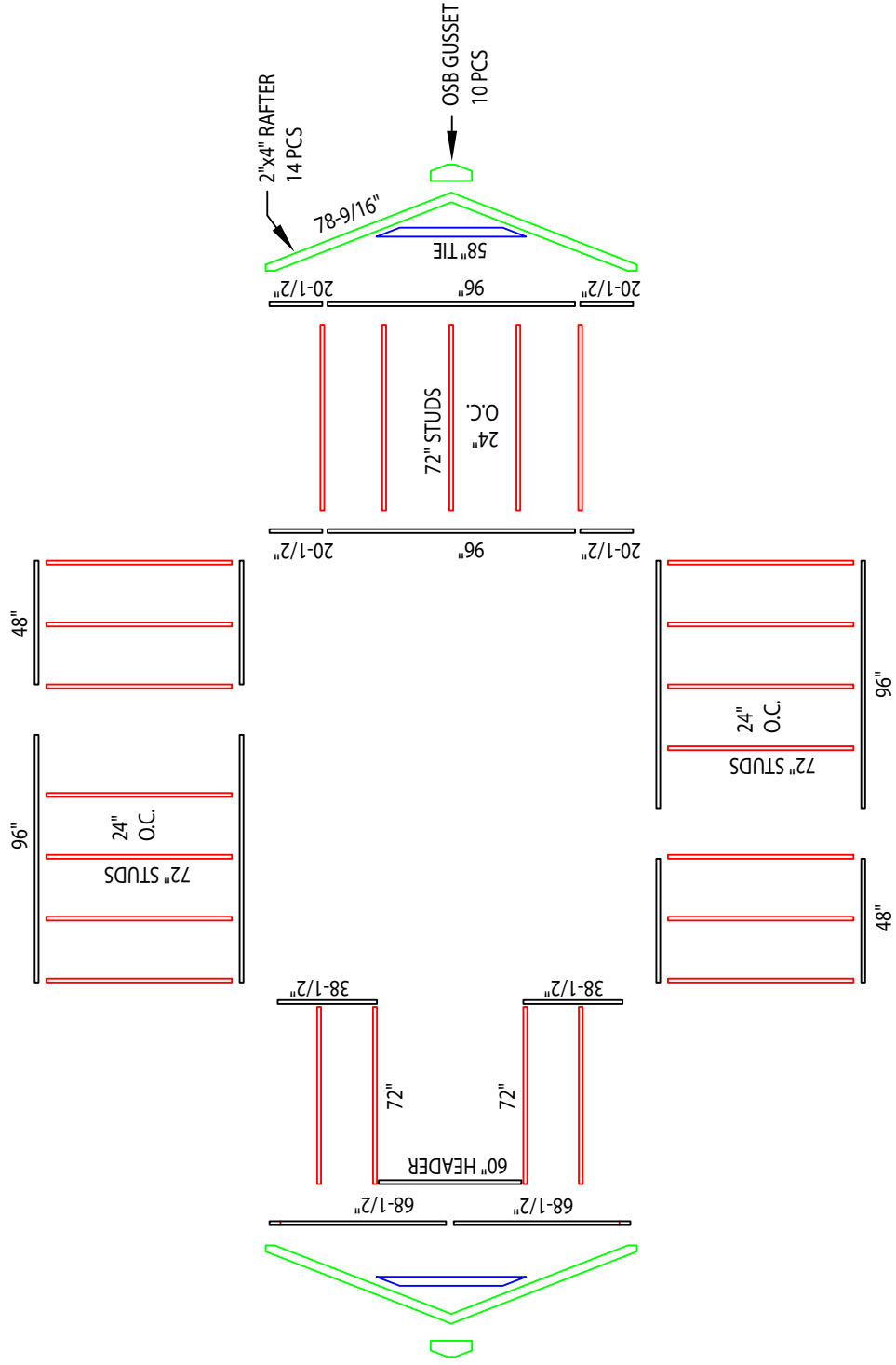


12'x12' VALUE GABLE PRECUT KIT
WALL LAYOUT

LEGEND

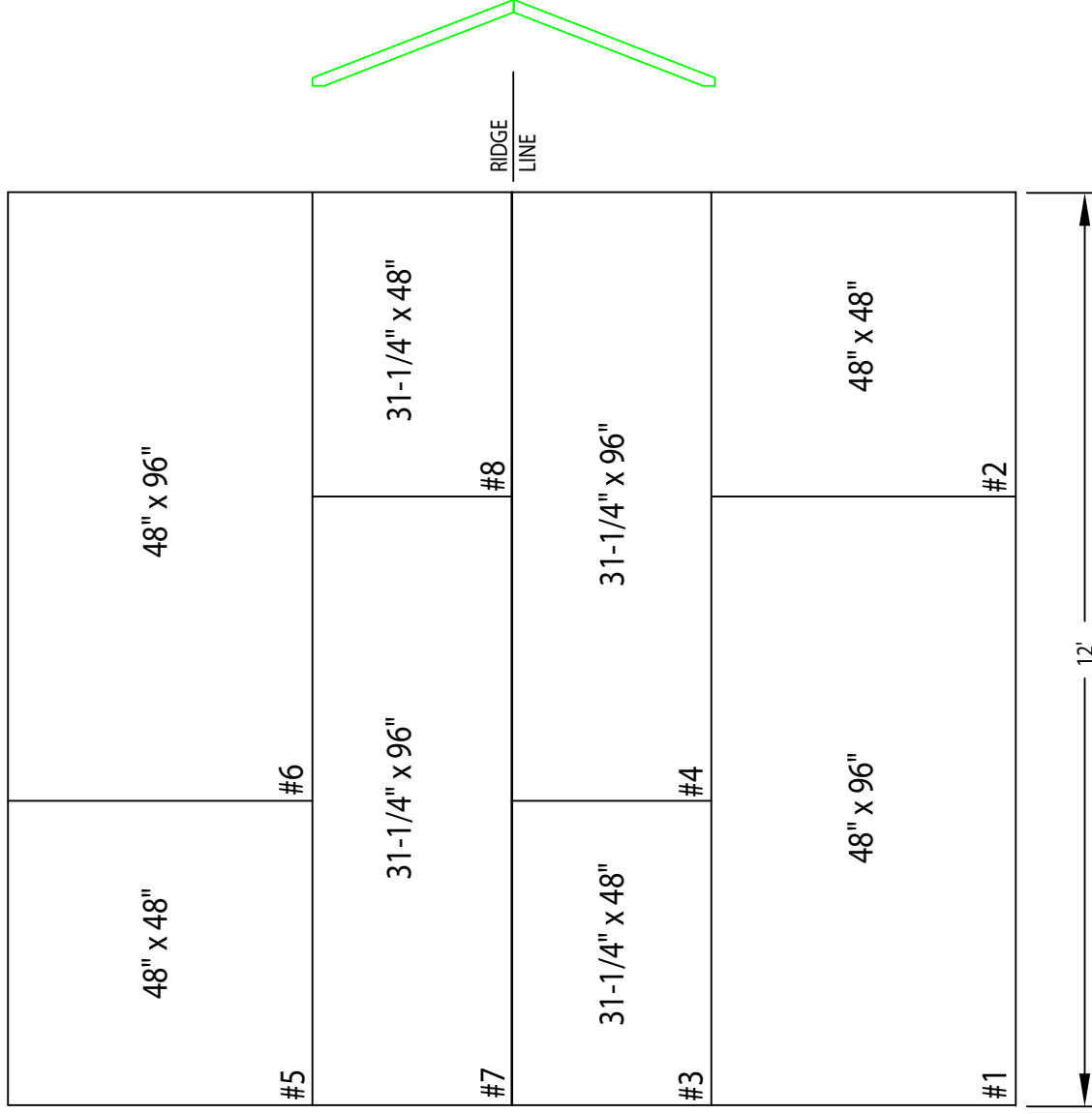
- PLATES
- STUDS
- TRUSSES/GUSSETS
- COLLARTIE



12x12' WIDE VALUE GABLE SHED
ROOF LAYOUT

LEGEND

ROOF PANELS
TRUSSES



Build Your Own 12'x12' Value Floor

Material List

- 4 - Treated 2"x4"x48" Rims
- 4 - Treated 2"x4"x96" Rims
- 20 - Treated 2"x4"x69" Joists

Material List

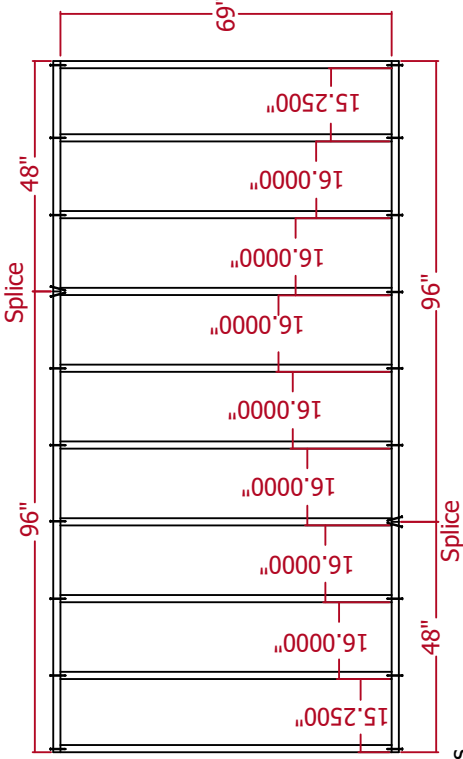
- 3 - 5/8"x48"x48" OSB
- 3 - 5/8"x48"x96" OSB



Little Cottage Company
Copyright 2024 All Rights Reserved

①

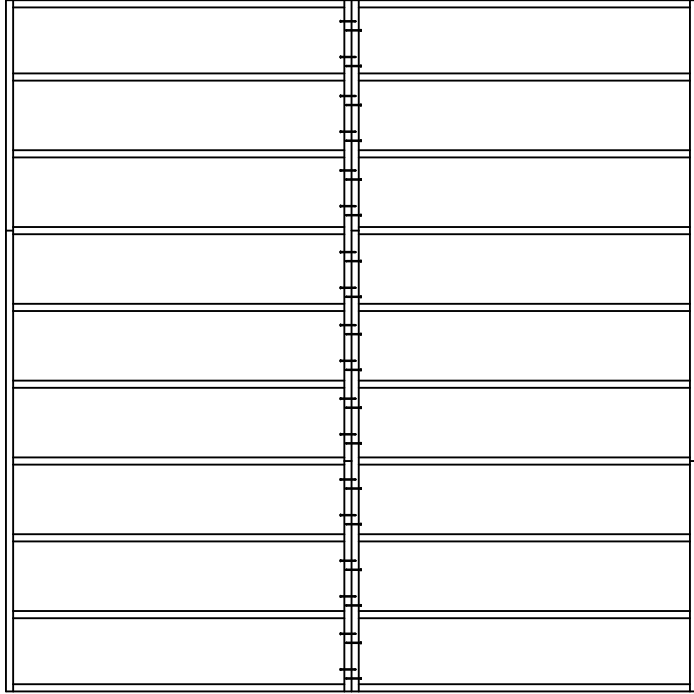
You will be constructing two separate floor sections. Set up the rim boards for one floor section on a flat surface as shown in the diagram. Mark the rim boards for each joist using the measurements. Position the joists according to the marks. Ensure the joists are flush with the rim boards.



For the joist that connects with the spliced rim boards, center it on the splice and nail the rim board to the joist using two 3-inch nails on each side. Fasten the remaining rim boards to the joists with 3-inch nails where indicated. Construct a second section in the same manner.

②

Once both sections are assembled, position them side by side as shown, ensuring they are flush. Secure them together as illustrated, using 3-inch nails.



③

Next, ensure the frame is square before laying out the OSB. Measure diagonally from one corner of the frame to the opposite corner. Then measure the other diagonal. Both measurements should be the same. If not, adjust until they are equal. Once the frame is square, place the OSB sheets on top as shown in the diagram and secure them with 2-inch nails, spacing the nails 6 inches apart along the edges and 12 inches apart in the interior.

