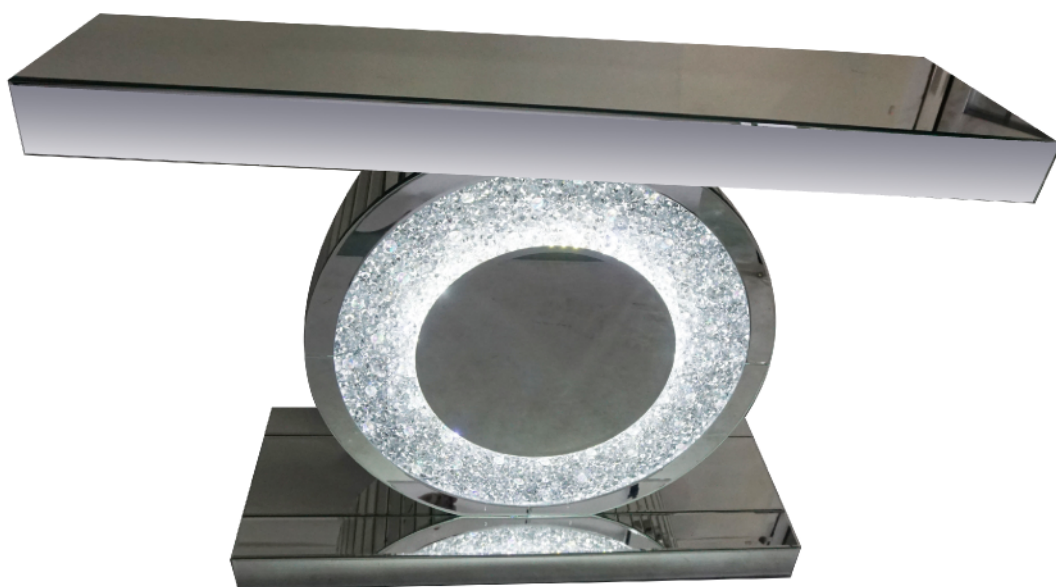


ASSEMBLY INSTRUCTIONS



CONSOLE TABLE

ASSEMBLY INSTRUCTIONS

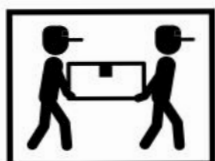
ASSEMBLY TIPS:

- 1.Remove hardware from box and sort by size.
- 2.Please check to see that all hardware and parts are present prior to start of assembly.
- 3.Please follow attached instruction in the same sequence as numbered to assure fast & easy assembly.



WARNING!

- 1.Don't attempt to repair or modify parts that are broken or defective. Please contact the store
- 2.This product is for home use only and not intended for commercial establishment.



ASSEMBLY TIME


15 MINUTES

PARTS IDENTIFICATION:.

Z HARDWARE IDENTIFICATION

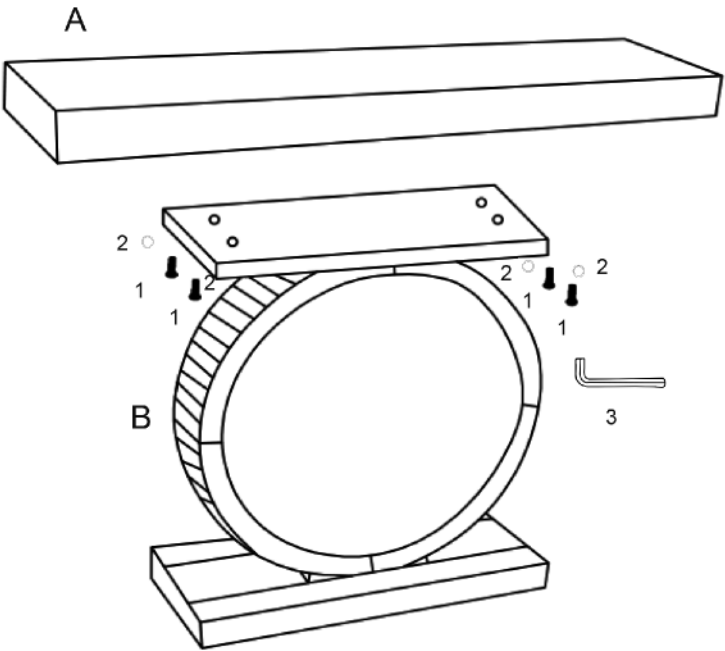
A  MIRROR CABINET 1PC

B  LEG 1PC

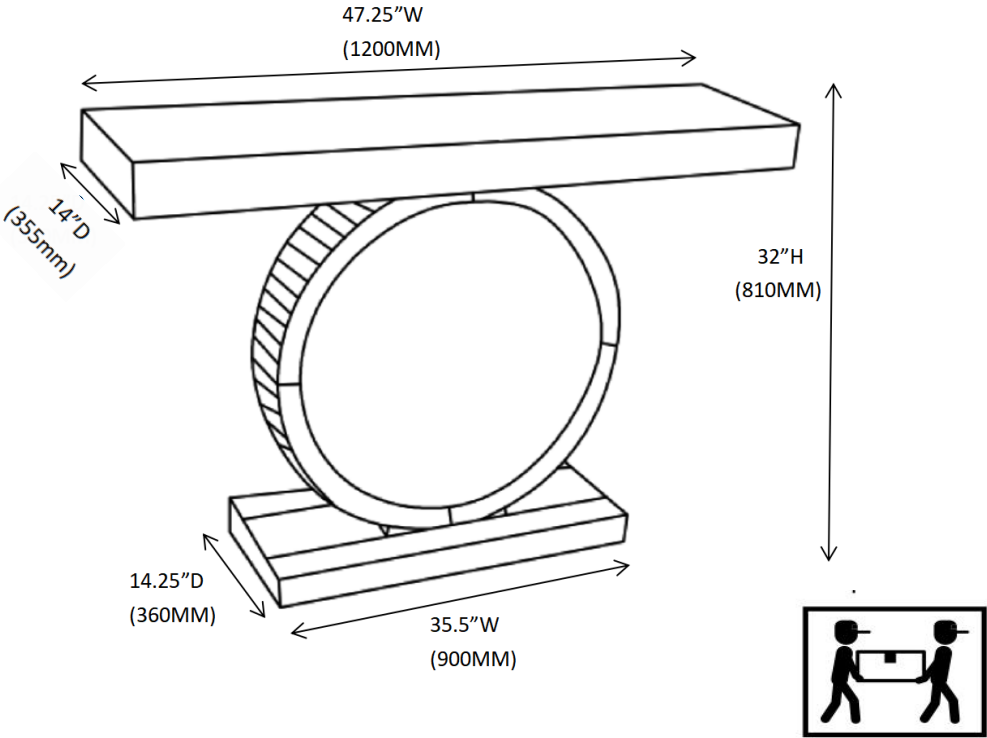
1  BOLT
8x35MM 4PCS

2  ALLEN KEY
30x70MM 1PC

ASSEMBLY INSTRUCTIONS
STEP 1



STEP 2



Note: Dimension tolerance $\pm 5\%$