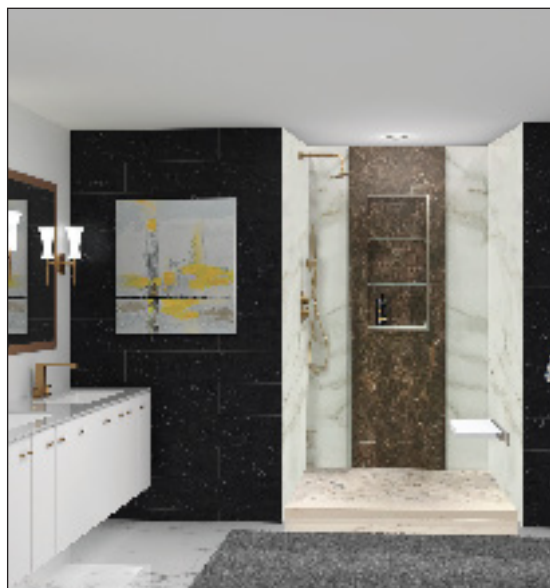


**TITAN STORAGE WALL KITS**

Titan Storage Wall Kits with Built-In Storage Pod provides easy installation. The installer can install the shower wall without cutting the hole on the back wall for the storage pod.

Titan Storage Wall kits are available in two options:

- 20" Corner Storage Wall Kit
- 27" Center Storage Wall Kit.

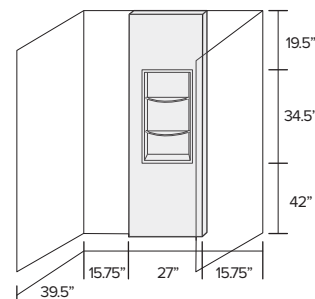
**SIDE CENTER BOX-OUT  
TITAN SHOWER KITS**

All Wall Sets include:

- (1) 19.5"W x 2"D x 96"H Wall Box
- (1) 14"W x 2"D x 34"H Powder Coated Storage Pod (Black, White, Grey or Cameo) based on the box panel color.
- (1) 13.5"W x 33.5"H Storage Pod Back Panel (color matched with box panel)
- (3) 39"W x 96"H Panels
- (2) Inside flat corner trim
- (2) Aluminum outside edge trim.

Mono Tone and Two Tone available.

Walls are trimmable.

**SIDE CORNER BOX-OUT  
TITAN SHOWER KITS**

All Wall Sets include:

- (1) 27"W x 2"D x 96"H Wall Box
- (1) 20"W x 2"D x 34"H Powder Coated Storage Pod (Black, White, Grey or Cameo) based on the box panel color.
- (1) 19.5"W x 33.5"H Storage Pod Back Panel (color matched with box panel)
- (2) 16"W x 96"H Panels
- (2) 39"W x 96"H Panels
- (2) Inside flat corner trim
- (2) Aluminum outside edge trim.

Mono Tone and Two Tone available.

Walls are trimmable.

