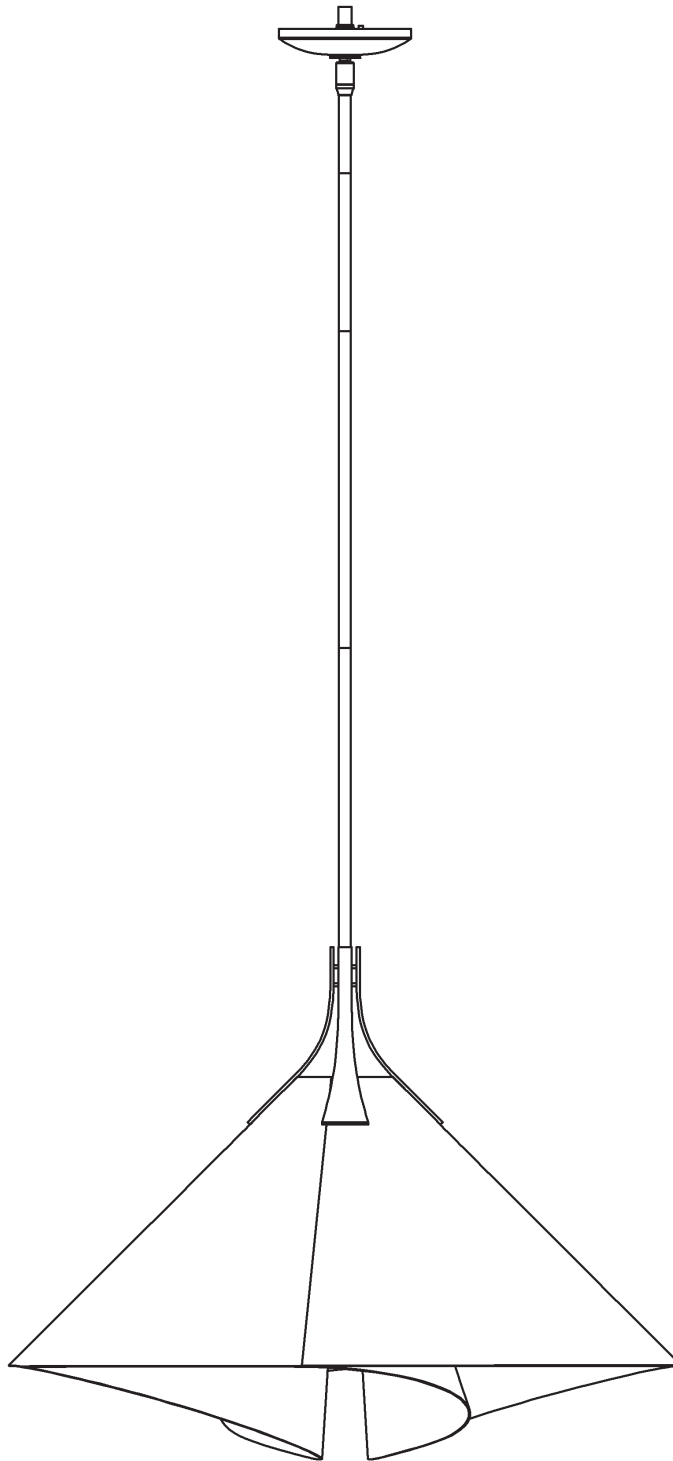


# ASSEMBLY & INSTALLATION INSTRUCTIONS

A792

Mobius Large Pendant 134503

---



HUBBARDTON FORGE.

MODERN AMERICAN BLACKSMITHS | FINE, HAND CRAFTED LIGHTING  
CASTLETON, VERMONT USA | HUBBARDTONFORGE.COM

## Component Parts

- A Fixture**
- B Crossbar**
- C Jam Nut**
- D Threaded Nipple**
- E Ground Screw**
- F Canopy Ring**
- G Canopy**
- H Swivel**
- I 3" Fixture Pipe (1)**
- J 6" Fixture Pipe (1)**
- K 12" Fixture Pipe (2)**
- L Stem Nipple (5)**
- M Socket**
- N Bulb (not included)**
- O Retaining Ring**
- P Shade Spider**
- Q Shade Assembly**
- R Flat Shade Panel (2)**
- S Bracket with Studs (4)**
- T Knurled Balls (8)**



# ASSEMBLY & INSTALLATION INSTRUCTIONS

A792

Mobius Large Pendant 134503

**CAUTION: FAILURE TO INSTALL THIS FIXTURE PROPERLY MAY RESULT IN SERIOUS PERSONAL INJURY OR DEATH AND PROPERTY DAMAGE.** We recommend installation by a licensed electrician. This product must be installed in accordance with applicable installation code(s), by a person familiar with the construction and operation of the product and the hazards involved.\*

Caution: Do not exceed maximum wattage noted on fixture. Use only recommended bulbs with fixture.

Please Note: After installation extra hardware and accessories are possible due to our kits are used on multiple products and options.

## To Install Fixture (Figure 1 & 2) on following page

**CAUTION: BE SURE POWER IS OFF AT THE MAIN BREAKER BOX PRIOR TO INSTALLATION.**

1. Carefully unpack fixture (A) from the carton.
2. Thread jam nut (C) and crossbar (B) onto threaded nipple (D) with ground screw (E) facing towards swivel (HI); leave both parts loose.
3. Using two machine screws (not provided), temporarily fasten crossbar (B) to the electric box.

**NOTE: A NEW ELECTRIC BOX COMES WITH SCREWS. WHEN REPLACING A FIXTURE, RETAIN THE EXISTING SCREWS FOR USE WITH THE NEW FIXTURE.**

4. Adjust the length of threaded nipple (D) in crossbar (B) so that canopy ring (F) will hold canopy (G) against the ceiling with no threads showing for best appearance. When the correct adjustment is established, tighten jam nut (C) against crossbar (B) to secure the adjustment.
5. Remove crossbar (B) from the electrical box and proceed with the assembly instructions.
6. Locate fixture pipes (I, J, K), fixture (A), stem nipples (L) . Stem nipples (L) can be found in the kit bag.
7. Provided are multiple fixture pipes in three different lengths. Choose the combination that will achieve the overall height desired. Refer to the table below to determine the pipes required to reach the desired overall height. Once you have determined the components necessary, feed the wires that exit fixture (A) through the individual components and thread pipes and nipples together. Wires will slip easier through loose components than through pipes and nipples that are pre-assembled. Once wires are run, apply thread locking compound to all the connection points and assemble the pipes and nipples.

		Overall Height of Fixture										
		24.2	27.2	30.2	33.2	36.2	39.2	42.2	45.2	48.2	51.2	54.2
# of Pipes Required	3" Pipe (J)	1		1		1		1		1		1
	6" Pipe (K)		1	1			1	1			1	1
	12" Pipe (L)				1	1	1	1	2	2	2	2

**NOTE: APPLICATION OF THE THREAD LOCKING COMPOUND IS NECESSARY TO PREVENT THE PIPE FROM LOOSENING DURING REGULAR MAINTENANCE AND CLEANING OF THE FIXTURE. BE CERTAIN TO APPLY THE COMPOUND.**

8. Carefully slide canopy ring (F) and canopy (G) over wires and fixture pipes (I, J, K) until they rest on fixture (A).
9. Slip wires from the fixture (A) through assembled swivel (H) and threaded nipple (D).
10. Refer to instructions on next page to continue installation.



# ASSEMBLY & INSTALLATION INSTRUCTIONS

A792

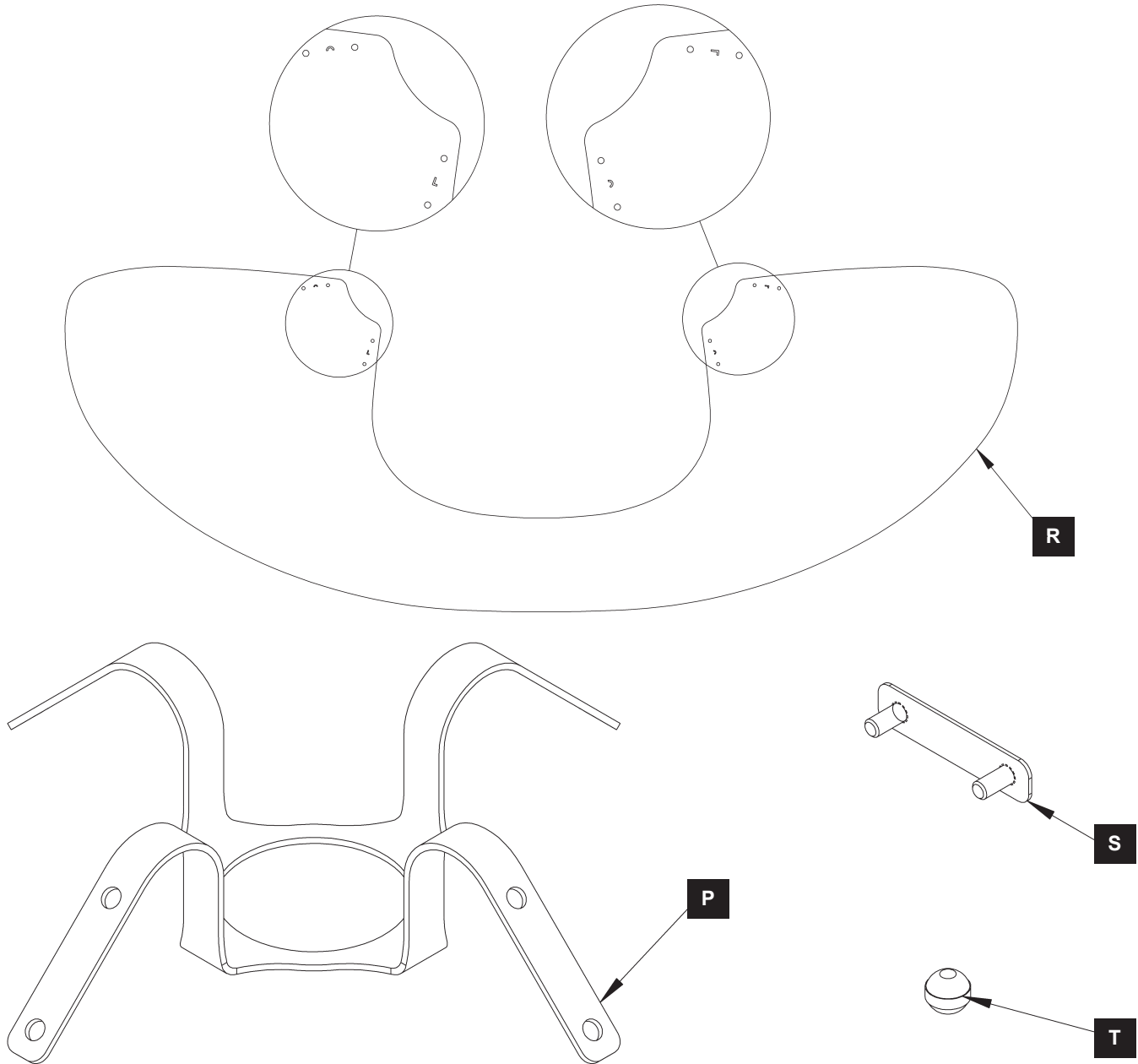
Mobius Large Pendant 134503

## To Assemble Shade



To see a video on how to assemble the Mobius shade, go to:  
<http://www.youtube.com/user/HubbardtonForge?v=ue3yX8f4iKc>

Step 1 Identify all parts needed Lay shade panels on a clean, flat surface as shown in illustration with “C” and “L” cutouts oriented correctly.



HUBBARDTON FORGE.

MODERN AMERICAN BLACKSMITHS | FINE, HAND CRAFTED LIGHTING  
CASTLETON, VERMONT USA | HUBBARDTONFORGE.COM

50411

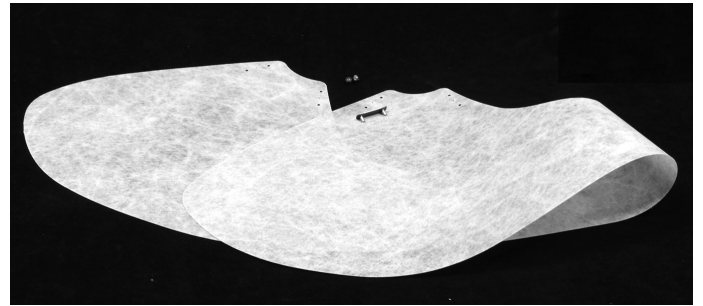
5 OF 8

# ASSEMBLY & INSTALLATION INSTRUCTIONS

A792

Mobius Large Pendant 134503

- Step 2 Fold right side of shade panel (R) over (as shown) lining up holes with letters L to L.



- Step 3 Slip bracket with studs (S) through the "L" sides of the shade panel (R) with studs facing toward inner fold. Push shade panels (R) on to studs completely. This will allow the shade to hold form. Fold right side of shade panel (R) over (as shown) lining up holes with letters L to L.



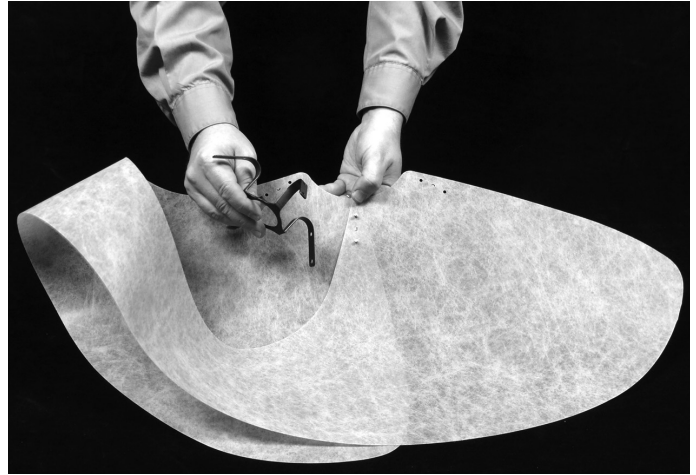
- Step 4 Repeat steps 2 and 3 for second shade panel (R). Set second shade panel aside for later use.

# ASSEMBLY & INSTALLATION INSTRUCTIONS

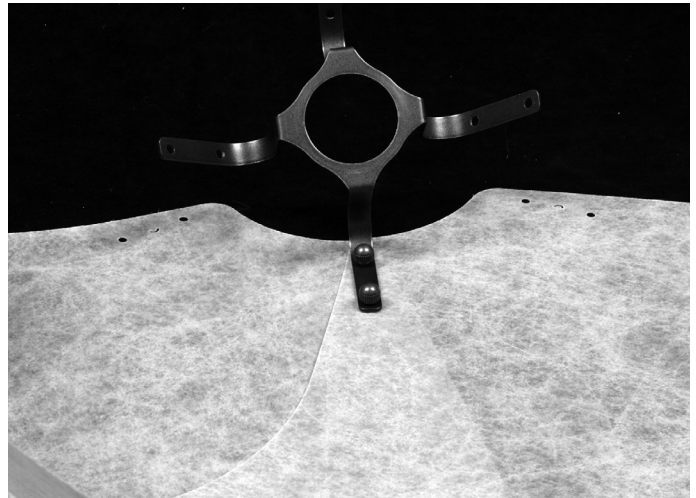
A792

Mobius Large Pendant 134503

Step 5 Install shade panel #1 (R) by inserting threaded studs into shade spider (P) as shown.



Step 6 Thread two knurled balls (T) onto the studs until snug.



Step 7 (R). Repeat steps 5 and 6 for second shade panel

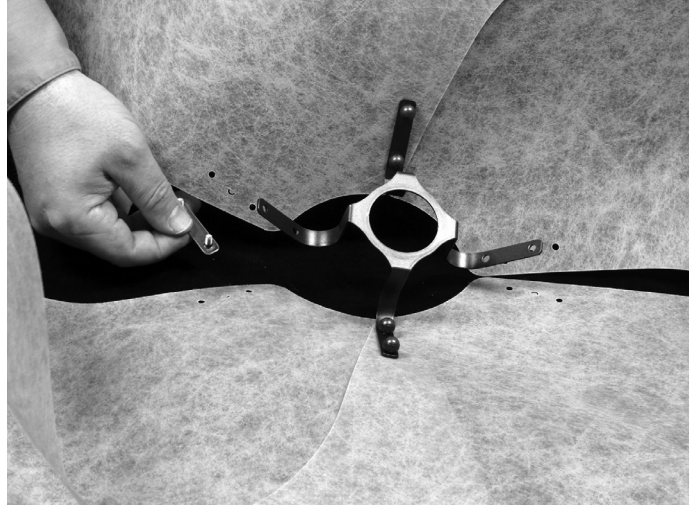


# ASSEMBLY & INSTALLATION INSTRUCTIONS

A792

## Mobius Large Pendant 134503

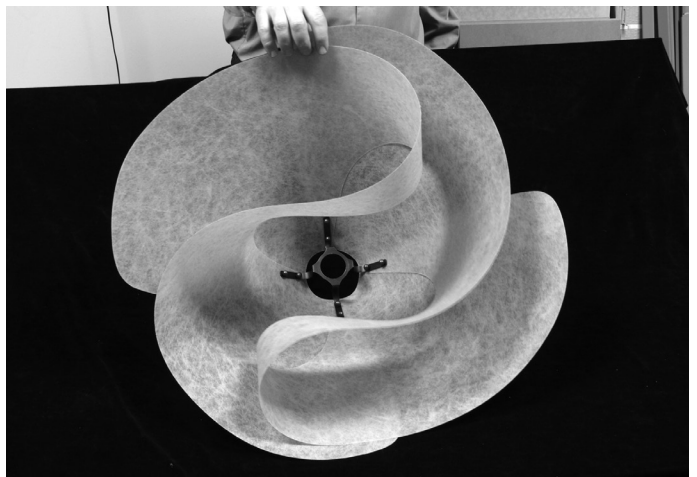
- Step 8 Align shade panels (R) so all folds are internal. Aligning holes referenced by letter "C", install bracket with studs through shades and shade spider (P). Secure with knurled balls (T)



- Step 9 Repeat step 8 for opposite side.



- Step 10 Completed shade assembly (Q)



If you need further assistance, or find that you are missing any parts, please contact the dealer from which you purchased this product. We hope you enjoy your fixture!

*\* Hubbardton Forge will not be liable for injury or damage caused by improper installation, lamping or use of this fixture.*