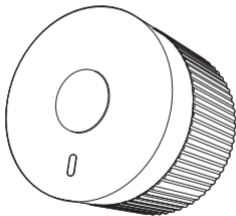


# FEIERDUN

Model: IS001



**Nexus Screw-in  
Dumbbell Sensor Module**

**USER MANUAL**

## Package Contents



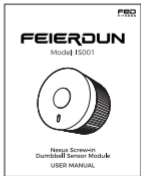
Dumbbell  
Sensor Module \*1



Module Base \*1

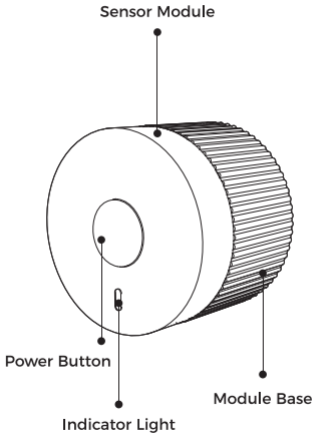


CR2032 Battery \*1



User Manual \*1

# Product Overview

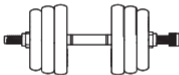


## Installation Methods



**Attention:**  
In kettlebell mode,  
the base is only  
suitable for use with  
less than 5 dumbbell  
pieces.

Install on the Kettlebell

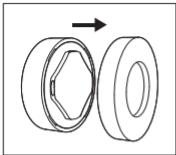


Install on the Dumbbell

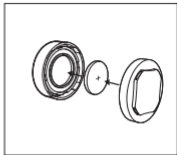


Install on the Barbell

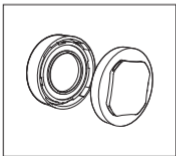
## Place the battery into the compartment



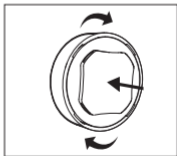
- Rotate the module counterclockwise to remove the battery compartment.



- Insert the battery into the battery compartment with the positive terminal facing up.



- Align the battery compartment with the module slot.



- Then, rotate the battery compartment clockwise to reinstall it back.

## Bluetooth Connection

- Turn on the dumbbell sensor module.
- Turn on the Bluetooth on your phone and open the App.
- Click Connect, select Dumbbell, and search for the device "Feier-DB-\*\*\*\*\*" to connect.

## App Download



## Button Description

- Click the power button to turn on.
- Press and hold the power button for 5s to turn off.

## Indicator Light Description

- The indicator light stays on after powering on and will automatically turn off after 10s.
- Under the power-on state, click the power button and the indicator light will light up; it will display according to the Bluetooth connection status, indicating the power is on.
- If there is no operation for 25 minutes, it will automatically power off.
- Press and hold the power button for 3s to power off, and the indicator light will quickly flash for 2s then goes out.
- Bluetooth Connection Status:
  - The indicator light stays on for 10s and then goes out. Click the power button and the indicator light will light up another 10s, indicating powering on and Bluetooth is connected.
  - The indicator light flashes slowly for 10s and then goes out. Click the power button and it will flash slowly again for 10s, indicating that Bluetooth is not connected during startup.

## Specifications

Product Number	IS001	Product Color	Black
Body Material	ABS	Product Dimension	3" x 4" x 2"
Implementation Standard	Q/FRTY 022-2022	Connection	Bluetooth V4.2
Sensor	Six-axis gyroscope	Battery	1 x CR2032 lithium battery
Net Weight	21.9g/0.05lb	Quality Level	Qualified Product
Brand Owner	Zhejiang Feier Smart Technology Co., Ltd.		
Address	Room 2402, Jinsha Century Building, Xiasha Street, Qiantang District, Hangzhou City, Zhejiang Province, China		
Manufacturer	Ningbo Sanhu Sporting Goods Co., Ltd.		
Address	No. 118-2, Zhenzhong Road, Yangjia Village, Langxia Street, Yuyao City, Zhejiang Province, China		

[support@feierdun.fit](mailto:support@feierdun.fit)