

# Assembly Instruction

**Tools Required:** None

**Bulb Recommended:** (2) Medium Base 60W Maximum

**Estimated Assembly Time:** 15-20 minutes

**Preparation:** Identify and inspect all parts before beginning installation. Check package content list and diagrams below to be sure all parts are present. If any parts are missing or damaged, do not attempt to assemble, install, or operate the fixture. Contact customer service for replacement parts.



## Warnings and Cautions

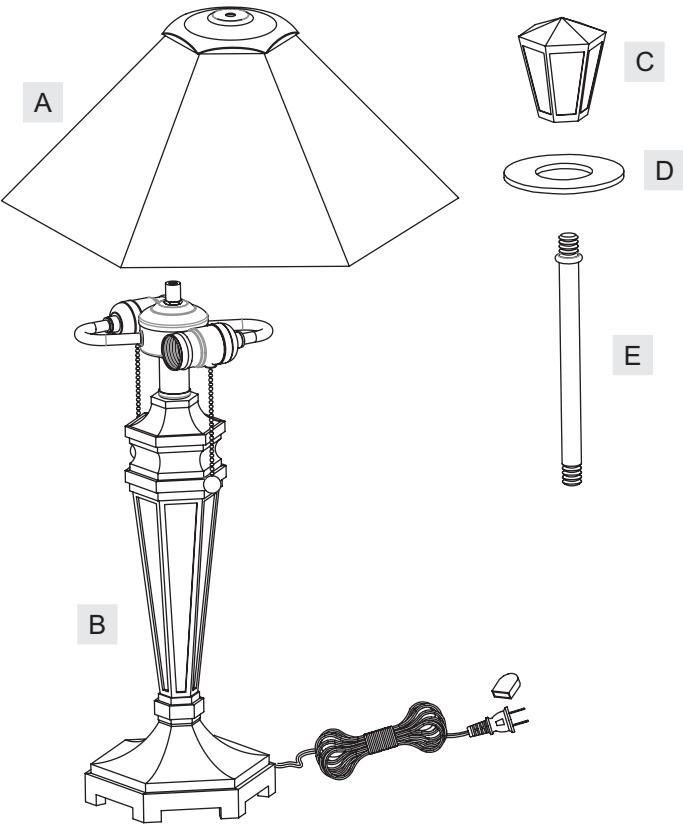
Turn off electricity at circuit breaker or main fuse box before installation. Consult a licensed electrician if in doubt.

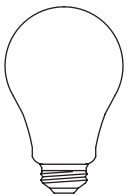
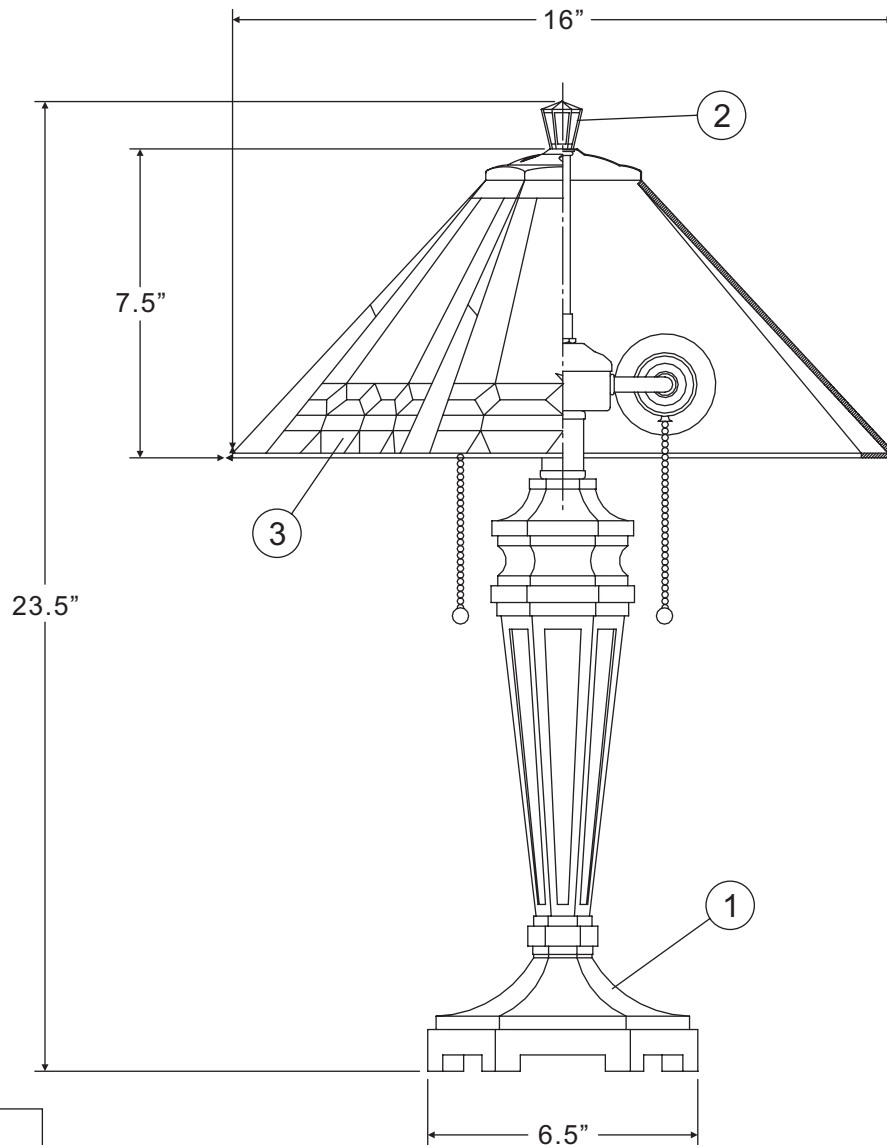
These instructions are provided for your safety. It is very important you read them completely before installing the fixture. We strongly recommend that a licensed, professional electrician perform the installation.

Disconnect fixture from power source before replacing bulbs. Make sure bulbs are given sufficient time to cool before removal. Do not subject glass parts to any shock while in operation or shattering may result.

## Package Contents

Part	Description	Quantity
A	Shade	1 pc.
B	Base	1 pc.
C	Finial	1 pc.
D	Flat Washer	1 pc.
E	Stem	1 pc.





(2)60W Medium  
Base Bulbs  
(Not Supplied)

NOTE: ALL DIMENSIONS ARE ROUNDED UP TO THE NEAREST 1/2"

NO.	PART NUMBER	REPLACEMENT PART DESCRIPTION	REQ.
1		BASE	1
2		FINIAL .5"SQ X 1"H	1
3		HADE TIFFANY 16"D X 7.5"H	1

# Assembly Instruction

## STEP 1 – Install Stem

- A. Thread the no beaded end of Stem (E) into the Coupling on the top of Base (B). Hand tighten until snug.

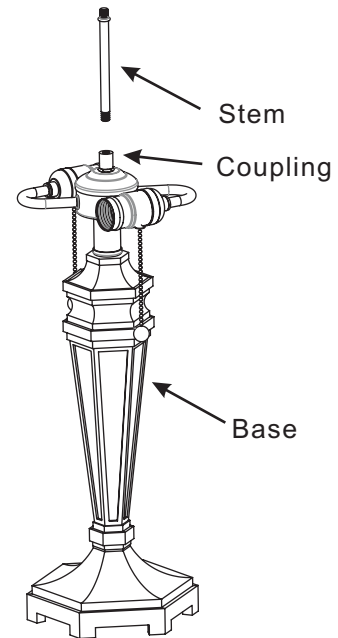


Figure 1

## STEP 2 – Assemble Shade

- A. Place the Flat Washer (D) and Shade (A) over the Stem (E). Secure by thread the Finial (C) onto the Stem. Hand tighten until snug.

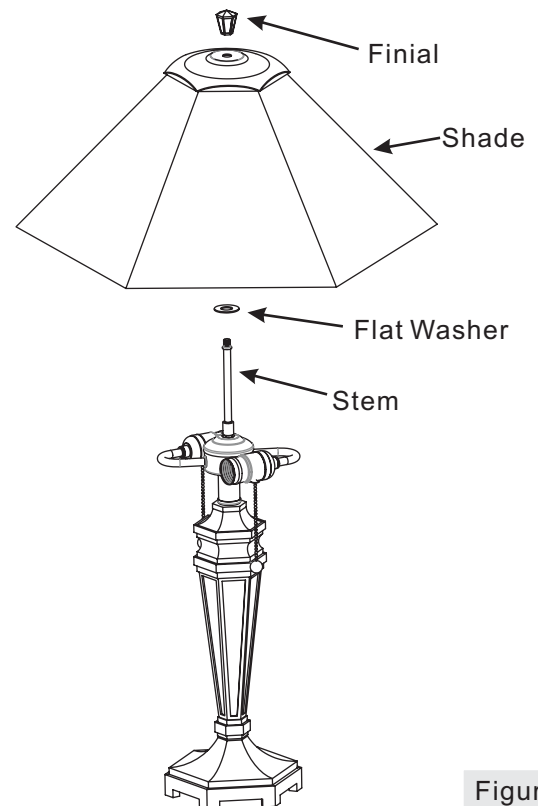


Figure 2

# Assembly Instruction

## STEP 3 – Install Bulb

- A. This fixture uses standard bulbs with medium screw bases. Maximum 60 watts.
- B. Insert bulb and screw snugly into place.

Your fixture table lamp is now assembled and ready to use. Enjoy!

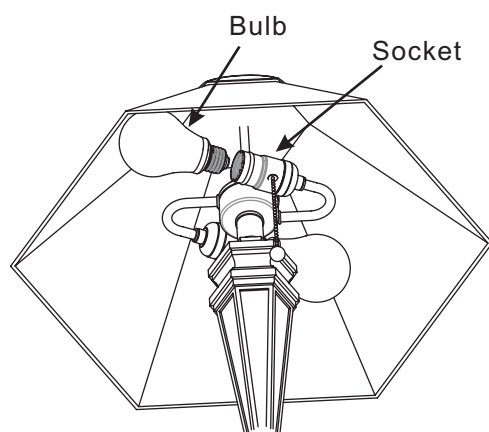


Figure 3