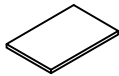
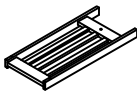





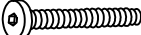


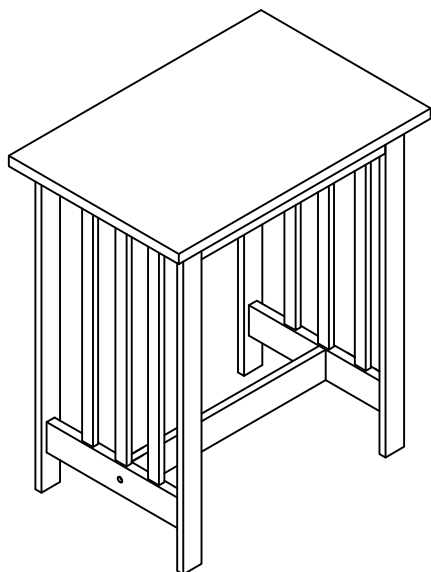
# ASSEMBLY INSTRUCTION

## DINING TABLE

<b>6</b>	Table Top	<b>7</b>	Side Panels	<b>8</b>	Top Cross Bar	<b>9</b>	Bottom Cross Bar
							
1 PC		2 PCS		2 PCS		1 PC	

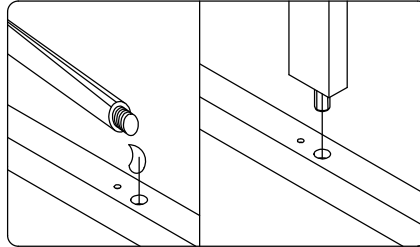
  

<b>F</b>	Glue	<b>G</b>	Wood Cap (Ø13.5*9mm)	<b>H</b>	Barrel Nut (Ø9.5*12mm)	<b>I</b>	Bolt (Ø1/4"*57mm)
							
1 PC		6 PCS		6 PCS		10 PCS	

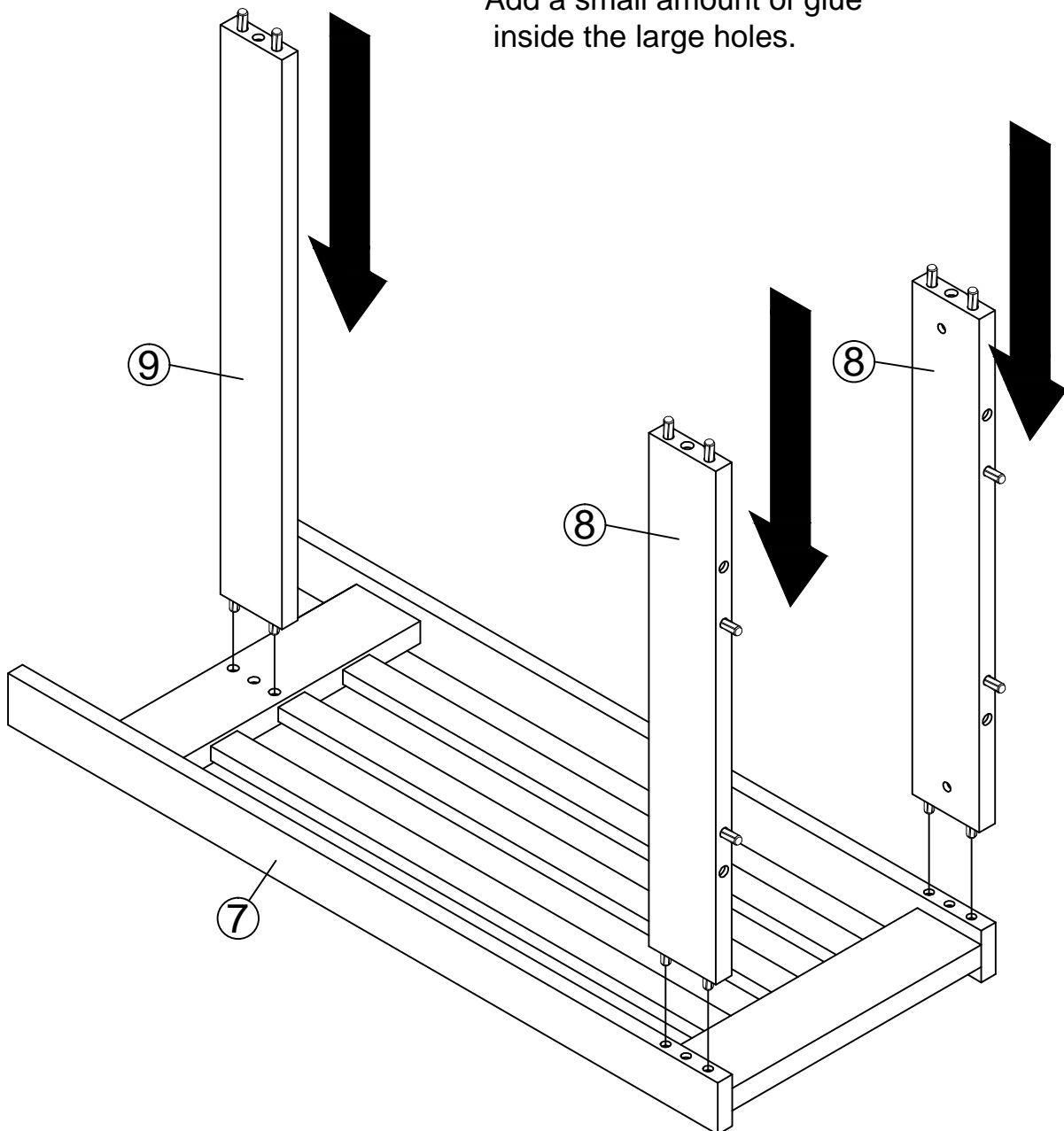


This page lists all the contents included in the box. Please take the time to identify the hardware as well as the individual components to this product. As you unpack and prepare for assembly, place the contents on a carpeted or padded area to protect them from damage.

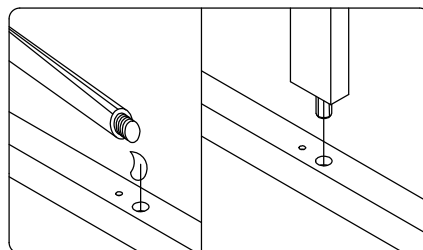
- 1** Place side panel (7) on a clean cloth for assembly. Attach top cross bars (8) to top part of side panel . Attach bottom cross bar (9) to bottom part of side panel.



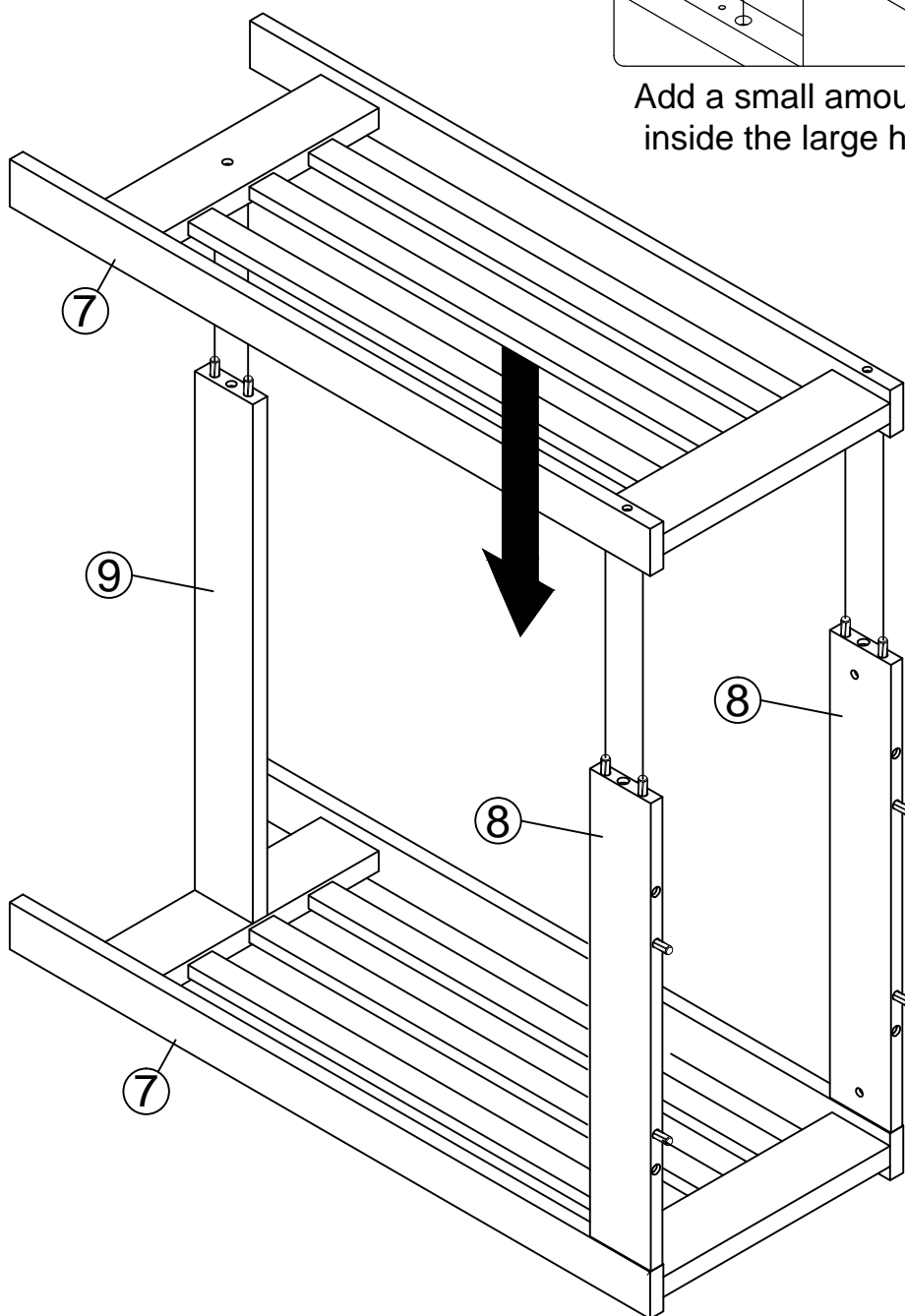
Add a small amount of glue  
inside the large holes.



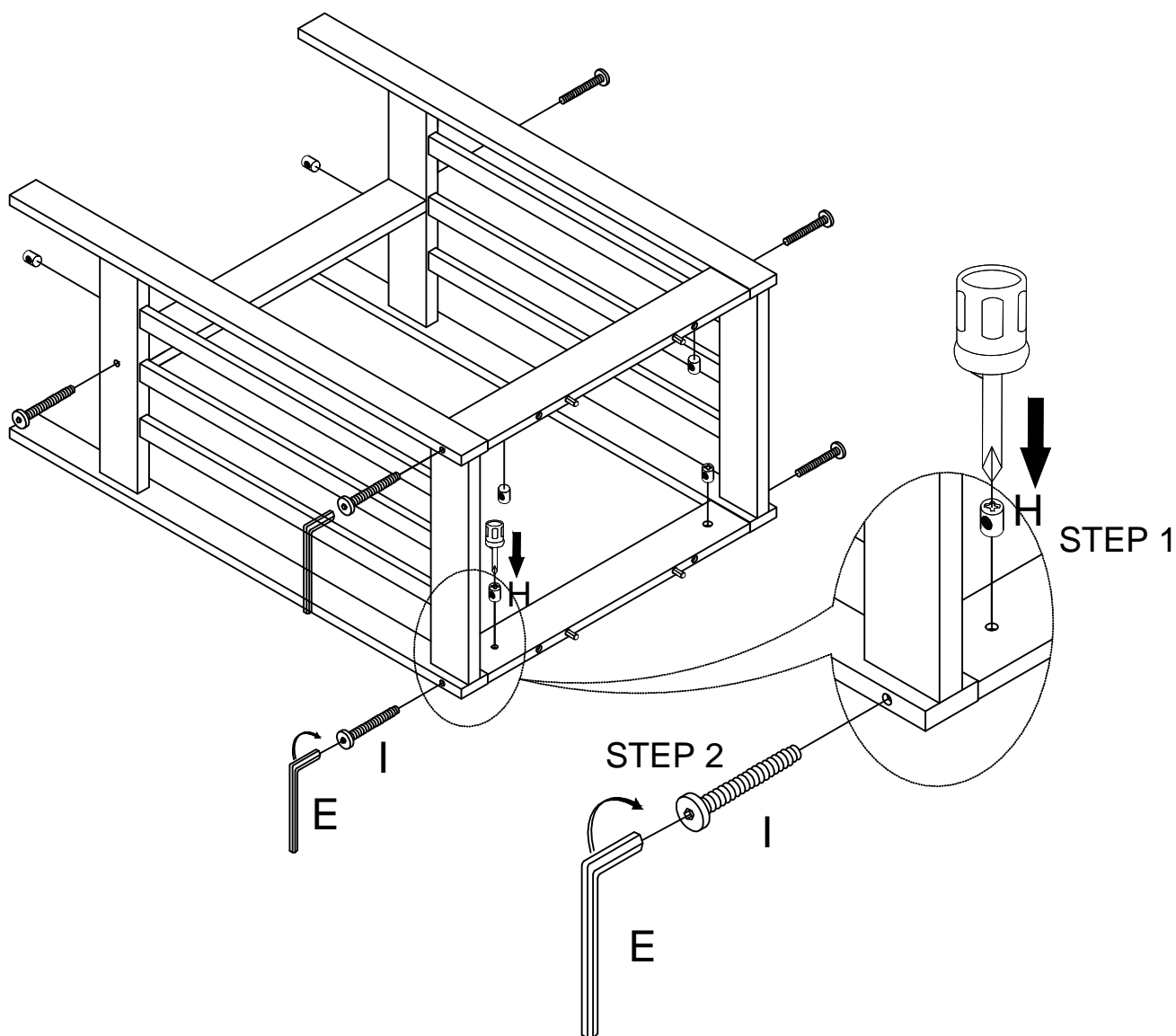
**2** Attach another side panel (7) to all cross bar.



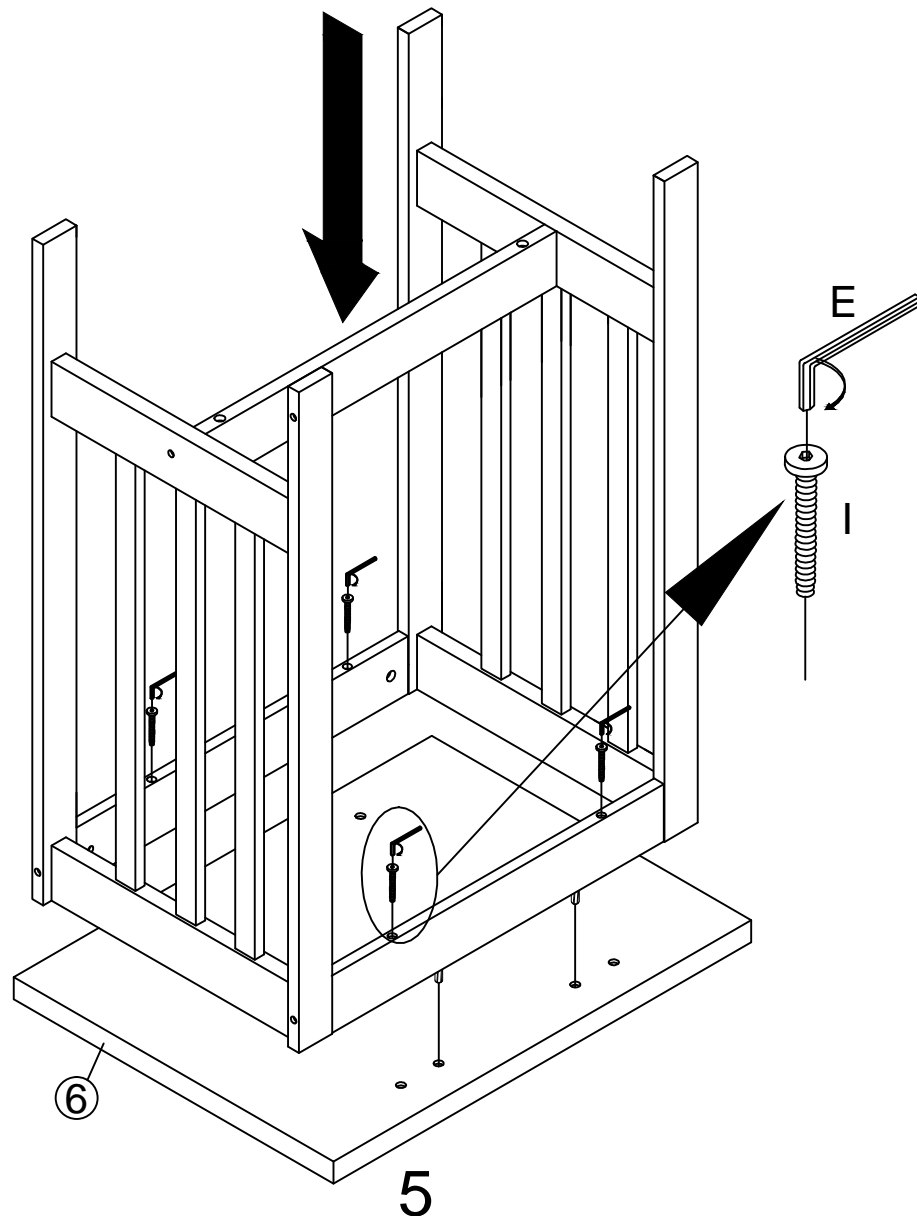
Add a small amount of glue  
inside the large holes.



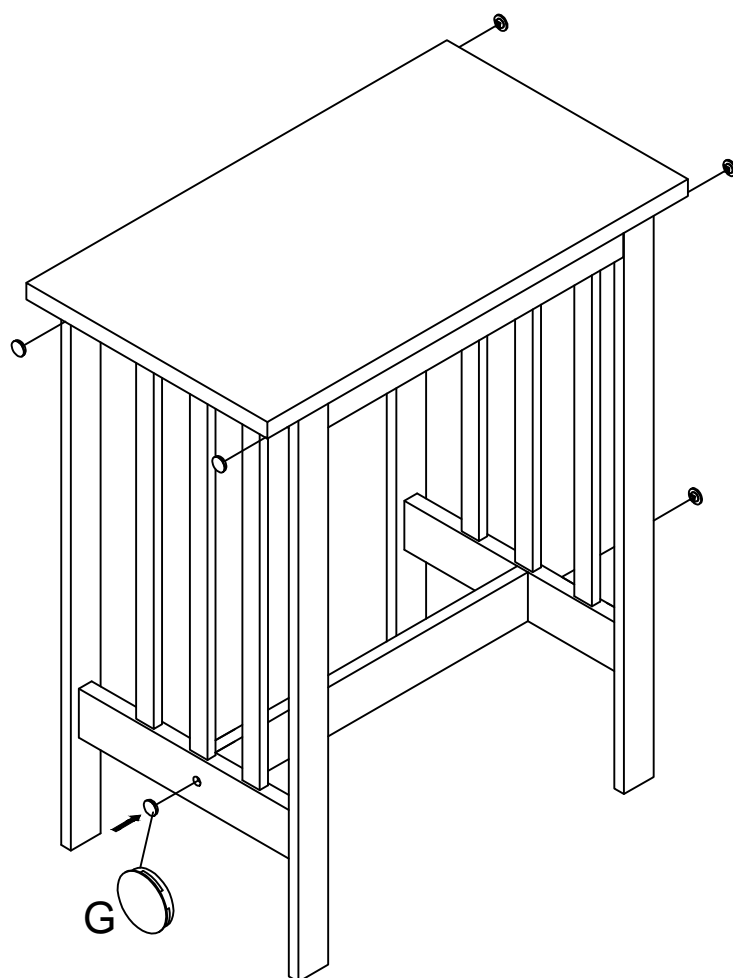
- 3** Place table base on the side for hardware assembly (as picture shown). Insert barrel nut (H) to the hole in stretcher and holding the barrel nut hole facing out with screw driver . Insert bolt (I) to the hole on barrel nut turn clock wise with allen wrench (E) into barrel nut until tight . Repeat same steps to all 6 holes on stretcher.



- 4** Place top upside down on a clean cloth for table base assembly. Place table base to the table top with alignment of wood dowels at two inner holes. Insert bolts (I) to the holes at cross bar and turn clock wise with allen wrench (E) until tight.  
**Warning! Do not over-tighten bolts to avoid damage to the table top.**



- 
- 5** Slowly turn the table upright with help of 2 men Cover table side holes with provided plastic caps (G).Table assembly completed! ENJOY!



---

### **Cleaning & care**

Treat surface with care. Surface is resistant to scratches but is not scratch resistant. Clean surfaces with a dry or damp soft cloth. Do not use abrasive cleaners. Hardware may loosen over time. Periodically check that all connections are tight.