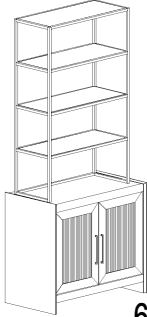


ASSEMBLY INSTRUCTION

HUTCH CABINET

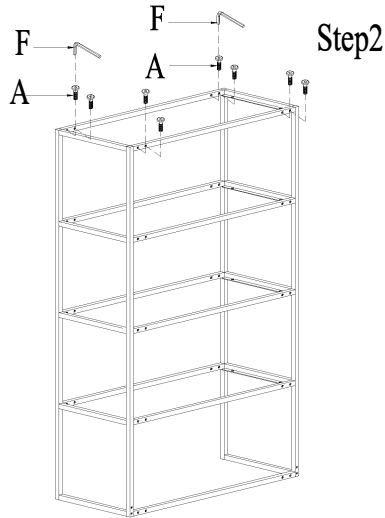
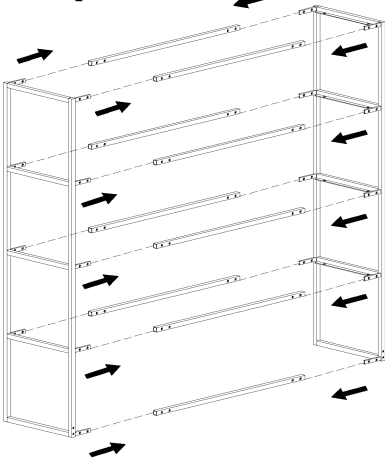


6) Assembly is completed.

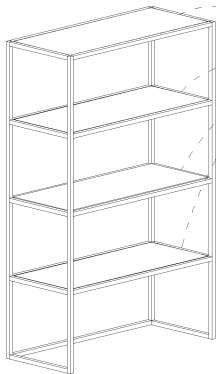
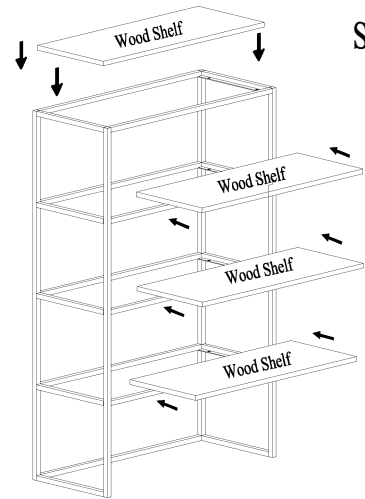
IMPORTANT NOTES :

- . Place all wooden parts on a clean and smooth surface such as a rug or carpet to prevent the parts from being scratched.
- . Check to be sure that you have all parts and hardware.
- . Remove all wrapping materials, including staples and packing straps before you start to assemble.
- . Do not tighten all screws and bolts until completely assembled.
- . Keep all hardware out of the reach of children.

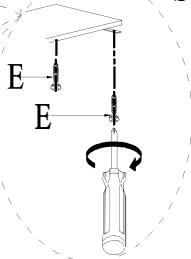
Step1



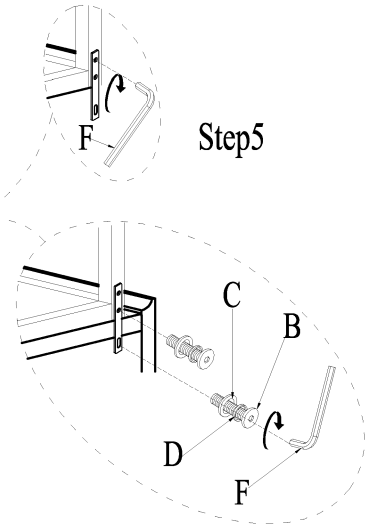
Step3



Step4



Step5



NO.	Dimension	Shape	Quantity
A	Hex Socket Flat Head Oap Screw 1/4"*19mm		36pcs
B	Bolt 1/4"*19mm		4pcs
C	Flat Washer Ø1/4"*16		4pcs
D	Lock Washer Ø1/4"		4pcs
E	Screw #3.5*15mm		16pcs
F	Allen Key 4mm		1pc