

Sliding Doors Assembly Instructions

IMPORTANT

PLEASE READ CAREFULLY / LISEZ ATTENTIVEMENT S'IL VOUS PLAÎT / POR FAVOR LEA CUIDADOSAMENTE

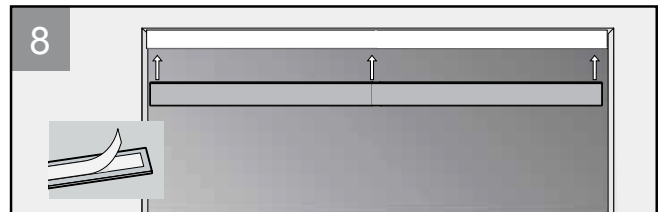
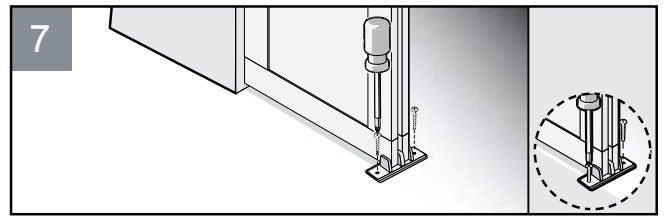
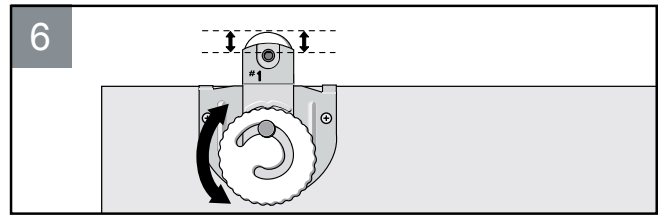
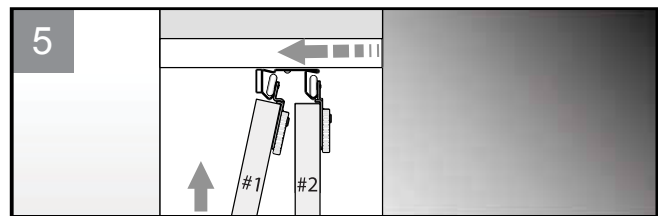
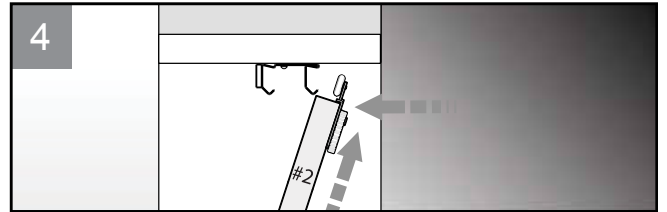
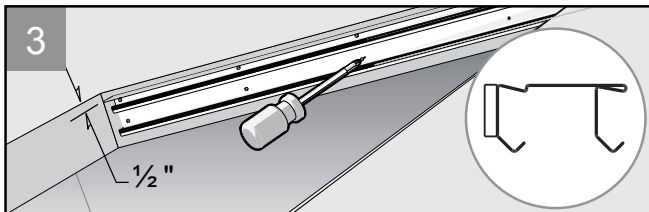
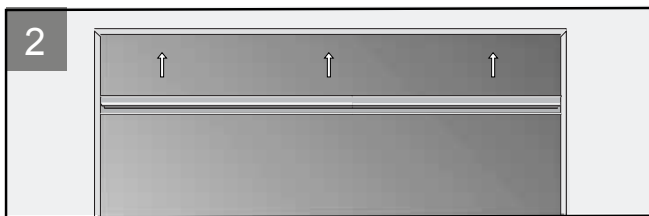
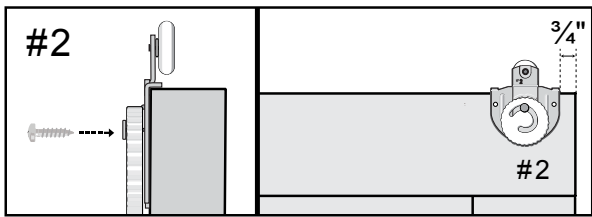
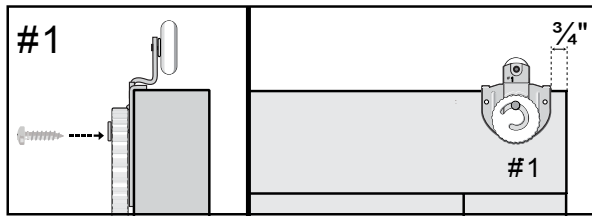
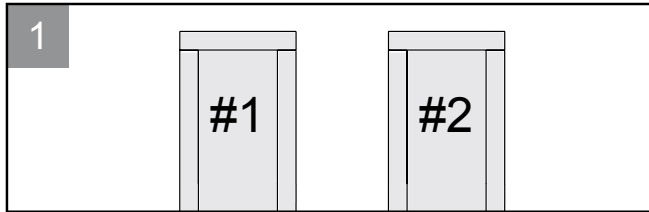
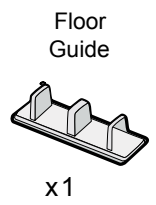
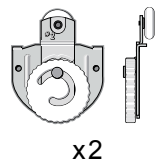
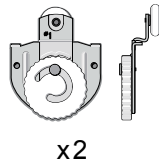
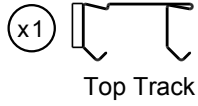
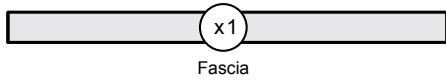
General safety rules follow / Consignes de sécurité générales à respecter / Normas Generales de Seguridad que deben cumplirse

- Read all instructions carefully
- Protect your eyes when handling metal parts, wear safety goggles
- Make sure the installation area is free of clutter
- Lisez attentivement toutes les instructions
- Protégez vos yeux en portant des lunettes de sécurité
- Assurez-vous que la surface d'installation n'est pas obstruée
- Lee cuidadosamente todas las instrucciones
- Protege tus ojos, usa gafas de seguridad
- Asegura que no haya desorden en el área de instalación

Follow all steps in order and complete each step before starting the next step.

Suivez toutes les étapes dans l'ordre et terminer chaque étape avant de commencer l'étape suivante.

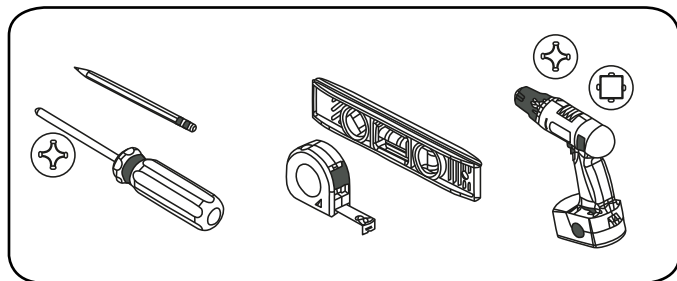
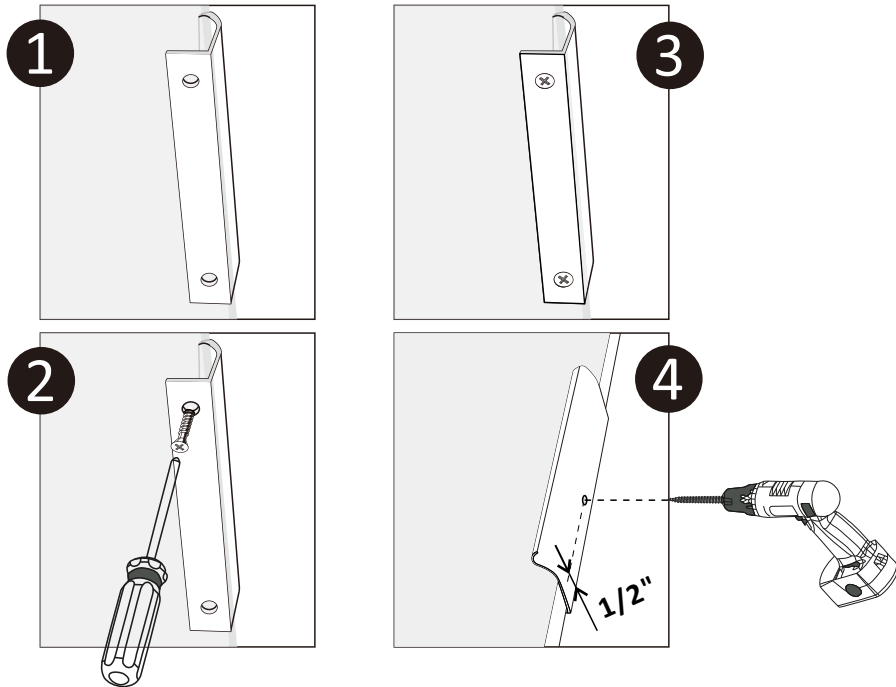
Siga todos los pasos en orden y complete cada paso antes de comenzar con el siguiente paso.



Attach The Pull

Attach the Pull to the inside stile of the door panel as shown in Figure. It is recommended that pulls be installed at 33 7/8" from the bottom of the door to the center of the pull. Use screws to lock the Pull from the back of the door panel.

Note: You can decide the opening and closing direction of the door panel and the installation position of Pull according to your needs.



Recommended tools

