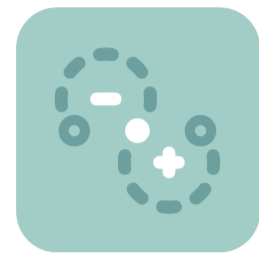


展开尺寸: 600\*192mm

# APP Operation Manual



Aroma-Link

## APP Operations and settings

### I、Download Aroma-link

1. Please enter the App store, Google play or Android App store to search Aroma-link, then download the App



ios



Android

### II、Register the account

1. Open the App Aroma-link, enter the login interface (As shown in the Figure1).  
2. Account registration is required for the first use of the APP. Click the [Register] button below to register an account (As shown in the Figure1).  
3. Fill in the account, email, password and other information, and click [register] after completing. APP will send an activation email to the registered mailbox, please activate the account in the email (As shown in the Figure2).

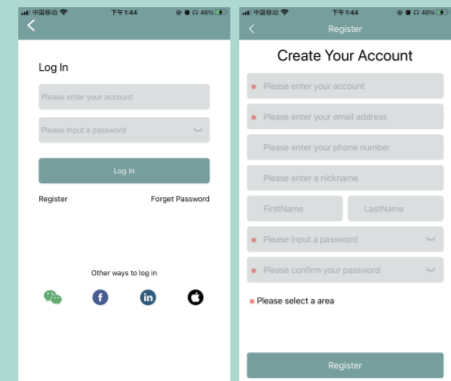


Figure1

Figure2

4. After the APP sends the email, click [Confirm] and in the received registration email [click to activate] (As shown in the Figure3).

### III、Bluetooth Control

1. Click [Bluetooth] (As shown in the Figure4).  
The APP automatically searches for nearby devices and click on the device name to connect. The default initial password is: "1234" (As shown in the Figure5).

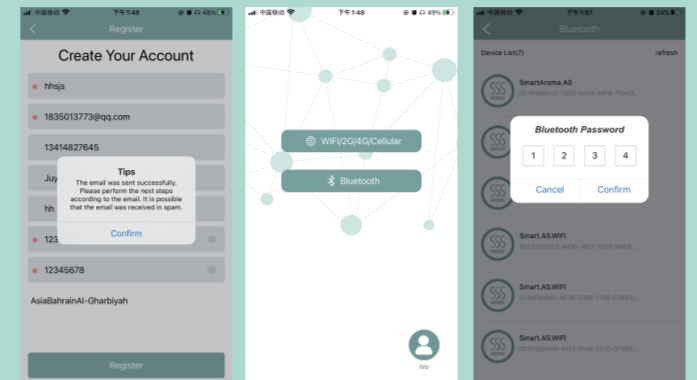


Figure3

Figure4

Figure5

3. The control interface is shown below:  
(1) On/Off: Click [ON/OFF] to turn on or off machine (As shown in the Figure6).  
(2) Fan: Click [fan] to open or close fan (as shown in Figure6).  
(3) Set the working time period and working frequency: click [Set] to set the working time period and working frequency (as shown in Figure 7/8).

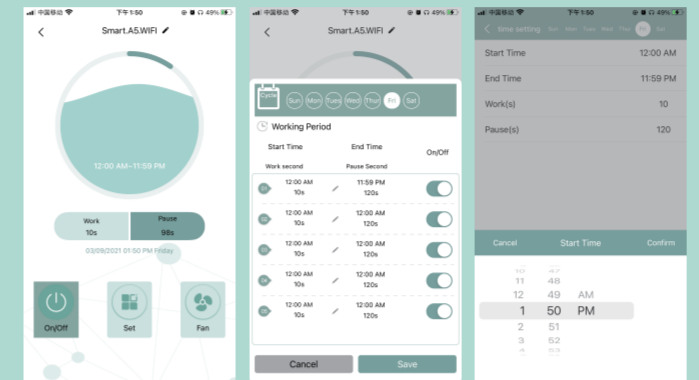


Figure6

Figure7

Figure8

### IV、Network control (Note: This function apply to models with WIFI/2G/4G/Cellular)

1. Click [WIFI/2G/4G/Cellular] (as shown in Figure9).  
2. Click [Add device] (as shown in Figure10).  
3. Choose add mode according to device type (as shown in Figure11).

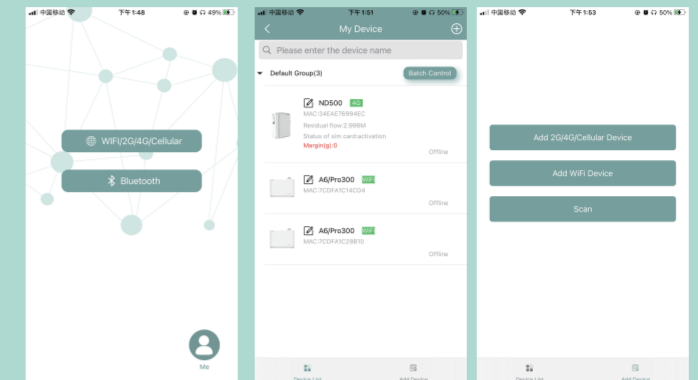


Figure9

Figure10

Figure11

4. [Add 2G/4G/Cellular device] (As shown in the Figure12/13).  
5. [Add WIFI device] (As shown in the Figure14/15/16).

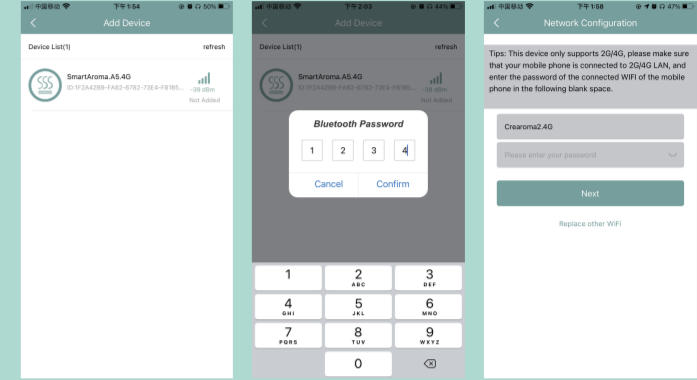


Figure12

Figure13

Figure14

### V、grouping and group control

1. Group management (As shown in the Figure 17).  
2. Set new group (As shown in the Figure 18).  
3. Group control (As shown in the Figure 19).

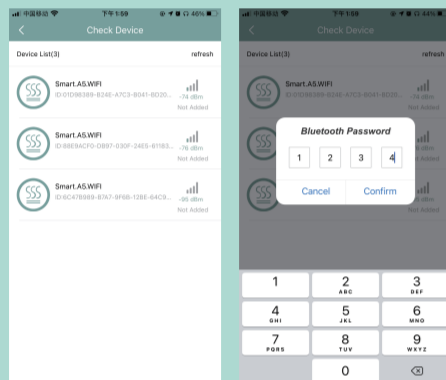


Figure15

Figure16

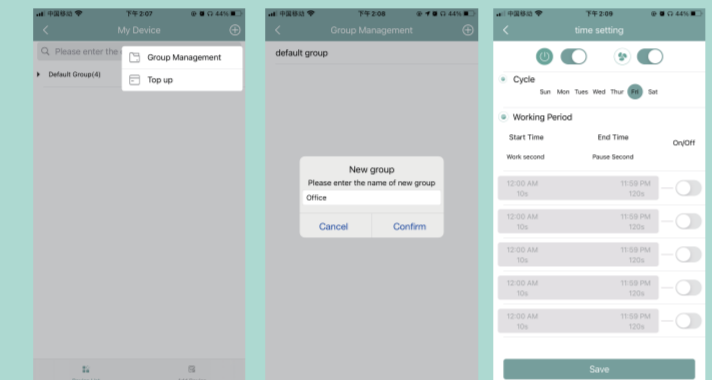


Figure17

Figure18

Figure19

### VI、Other operations

1. Click on " " pop up Move group/Rename/QR code sharing/Remove device (As shown in the Figure 20).  
2. Click on " " pop up Rename group/New sub group/Delete group (As shown in the Figure 21).

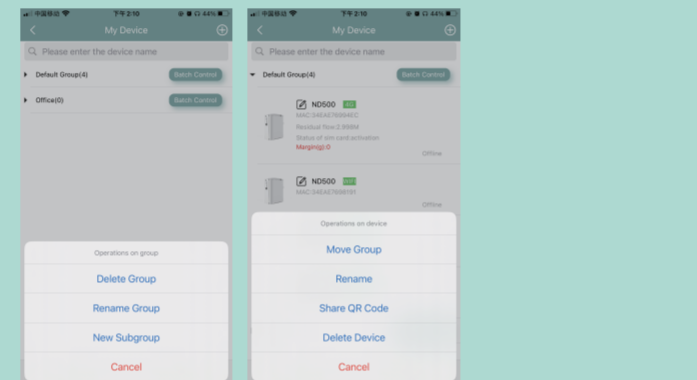


Figure20

Figure21

### VII、Seven, this operation is only available in the 2G 4G version [wifi + bluetooth version does not have this function]

4. Weighing set (As shown in the Figure 22).  
5. Fragrance oil reserve display (As shown in the Figure 23).  
6. After-sale service (As shown in the Figure 24).

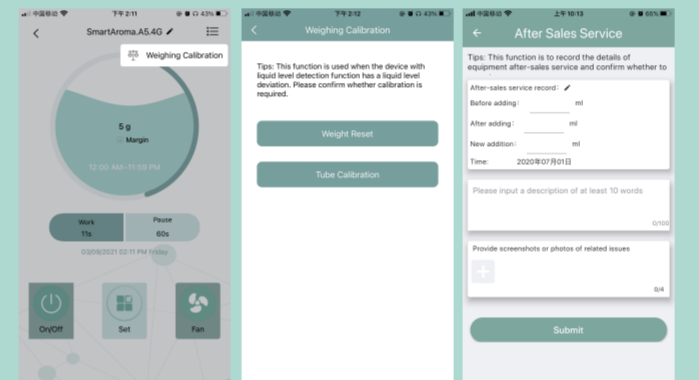


Figure22

Figure23

Figure24

### VII、SIM flow query and top up [only for 2G/4G version]

1. Click the device list, then you can check the SIM flow query and status (As shown in Figure25).  
2. Click the "+" in the upper right corner, then chose "Top Up" (As shown in Figure25).  
3. Select the device that needs to be top-up (As shown in Figure26).  
4. Click the "Top up" button (As shown in Figure26).

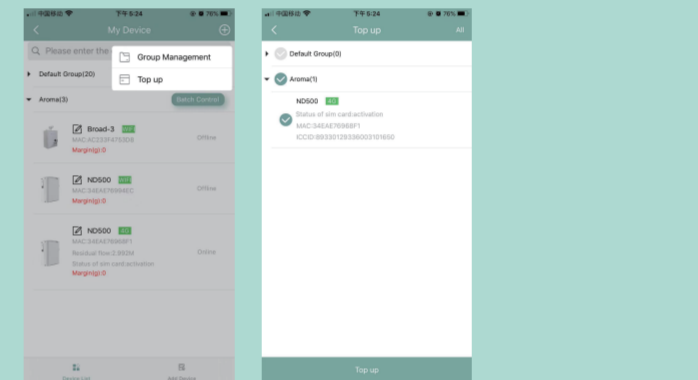


Figure25

Figure26

5. Select the data package then click "Pay" to confirm recharge information and do next step (As shown in Figure27).  
6. Enter the Paypal payment page. Please follow the prompts to complete the payment (As shown in Figure28).

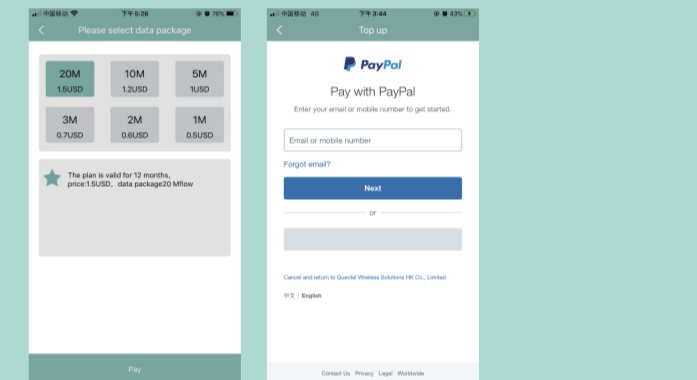
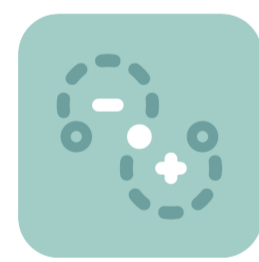


Figure27

Figure28

# APP使用说明书



Aroma-Link

## APP操作和设置

### 一、下载及安装

1. 请在苹果商店, 谷歌应用市场, 安卓应用市场内搜索Aroma-link, 下载并安装。



苹果IOS



华为应用市场下载

浏览器下载

### 二、注册账号

1. 打开Aroma-link, 进入到登录界面 (如图1所示)。  
2. 首次使用APP需要注册账号, 点击下方【注册】按钮, 注册账号 (如图1所示)。  
3. 填写账号, 邮箱, 密码等信息, 填写完成后点击【注册】, APP将会向注册邮箱内发送一封激活邮件, 请在邮件内激活账号 (如图2所示)。



图1

图2

4. APP发送邮件后点击【确认】, 并在收到的注册邮件内【点击激活】 (如图3所示)。

### 三、蓝牙控制

1. 点击【蓝牙】 (如图4所示)。  
2. APP自动搜索附近设备, 点击设备蓝牙名称进行连接; 初始密码默认为: 1234 (如图5所示)。



图3

图4

图5

3. 控制界面如下图所示:  
(1) 开关机: 点击【开关】即可开关机 (如图6所示)。  
(2) 开关风扇: 点击【风扇】即可开关风扇 (如图6所示)。  
(3) 设置工作时间段及工作频率: 点击【设置】可设置工作时间段及工作频率。 (如图7/8所示)。



图6

图7

图8

### 四、联网控制(注意: 此功能适用于带WIFI/2G/4G/蜂窝的机型)

1. 点击【WIFI/2G/4G/蜂窝】 (如图9所示)。  
2. 点击【添加设备】 (如图10所示)。  
3. 根据设备类型选择添加模式 (如图11所示)。

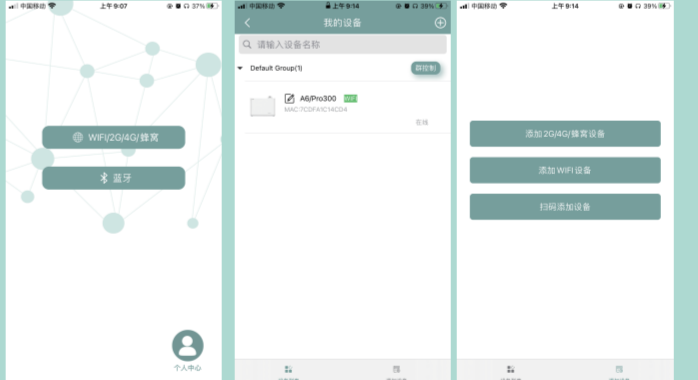


图9

图10

图11

4. [添加2G/4G/蜂窝设备] (如图12/13所示)。  
5. [添加WIFI设备] (如图14/15/16所示)。

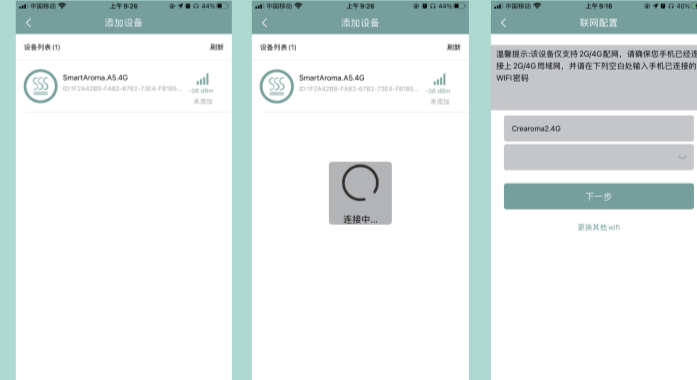


图12

图13

图14

### 五、分组和群控

1. 分组管理 (如图17所示)。  
2. 新建分组 (如图18所示)。  
3. 分组群控 (如图19所示)。



图15

图16



图17

图18

图19

### 六、其他操作

1. 点击" "弹出移动分组/重命名/二维码分享/删除设备 (如图20所示)。  
2. 点击" "弹出重命名分组/新建子分组/删除分组 (如图21所示)。



图20

图21

### 七、此操作仅限2G 4G版本【wifi+蓝牙版没有此功能】

4. 称重设置 (如图22所示)。  
5. 精油余量显示 (如图23所示)。  
6. 售后服务 (如图24所示)。



图22

图23

图24

### 八、SIM卡查询与充值【wifi+蓝牙版没有此功能】

1. 点击设备列表, 可在设备详情查看流量剩余和SIM卡状态 (如图25所示)。  
2. 点击右上角"+"可为SIM充值 (如图25所示)。  
3. 选择需要充值的设备 (如图26所示)。  
4. 点击下方"下一步"按钮 (如图26所示)。



图25

图26

5. 选择套餐类型, 然后点击"下一步" (如图27所示)。  
6. 进入Paypal付款界面, 请按提示完成付款 (如图28所示)。

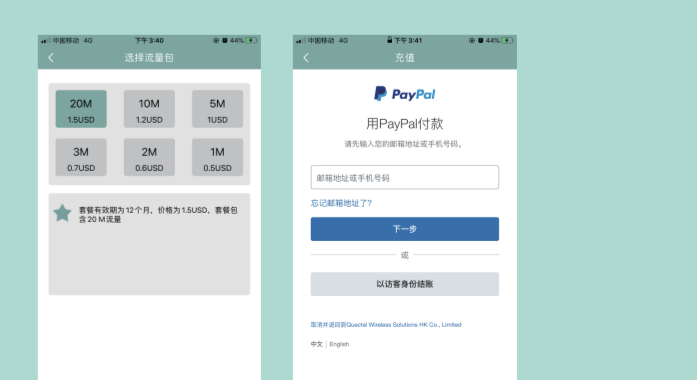


图27

图28