

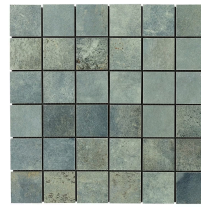
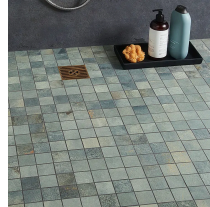


DESIGN. PRICE. EXPERIENCE

tilebar.com

888.541.3840

Angela Harris Flatiron Aquamarine 2x2 Porcelain Matte Mosaic



SPECIFICATIONS

Available Sizes	2x2", 3x24", 12x24", 20" Hex, 24x48"	Breaking Strength	> 1300
Chemical Resistant	Yes	Chip Size	2" x 2"
Commercial	Wall Floor	Coverage	0.96
Frost Resistant	Yes	Item Color	Green
Location	Backsplash, Bathroom, Indoor, Kitchen, Outdoor, Pool, Shower	Made In	Spain
Material	Porcelain	Patterns	Square
Rectified	Yes	Residential	Wall Floor
Sample Size	3.9" x 3.9"	Shade Variation	V3

Size	11.81" x 11.81"
------	-----------------

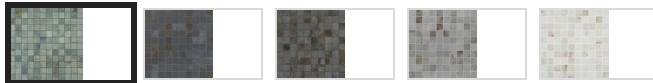
Thickness	9.7 mm
-----------	--------

Tile Finish	Matte
-------------	-------

Water Absorption	< 0.5%
------------------	--------

Weight	5 lbs
--------	-------

OPTIONS



SIZES:



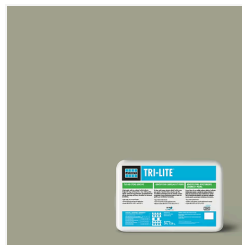
Frequently Bought Together



Laticrete
Permacolor Dusty...
\$32.00



Laticrete Seal &
Protect Heavy Dut...
\$25.50



Laticrete Tri-lite
Gray Thinset- 30 Lb
\$40.65



Essential Silver
10mm L-shape...
~~\$14.99~~ \$11.99

With its elegant patina effect and cement look, the Angela Harris Flatiron Aquamarine 2" x 2" Matte Porcelain Mosaic redefines industrial-style design for luxury spaces. The metallic edges of the tile are enhanced with a natural matte finish, subtle relief texture, and a unique gloss effect applied with advanced digital techniques.

Industrial cement style finds a refined eloquence in the Angela Harris Flatiron Collection. This porcelain series captures the essence of aged cement in a modern color palette with a patina that fades at the edges. Offered in a full suite of sizes and formats, this exclusively designed collection brings a cutting-edge look at an affordable price point.

Nearly 20 years ago, the market saw a need for a design firm that could be a true partner to builders and developers – a firm that understood how to deliver compelling design through a market-driven approach. Angela Harris' TRIO firm was born out of a belief that with a methodical strategy, they could hit markets at a lower cost, faster, and with better quality merchandise. They were right.