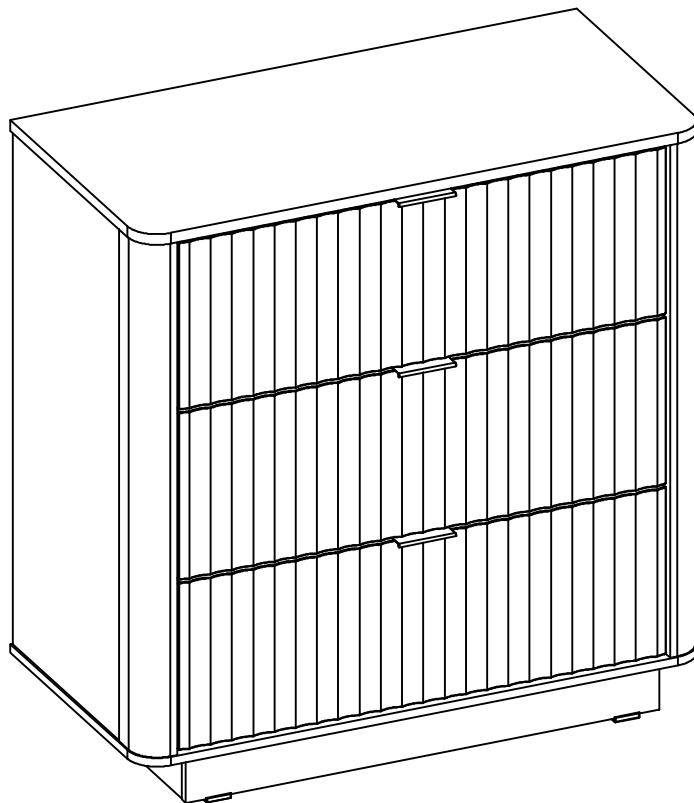
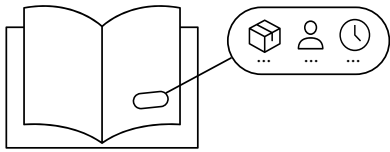


3-DRAWER DRESSER

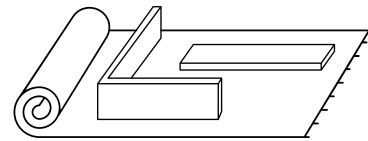


ASSEMBLY INSTRUCTIONS

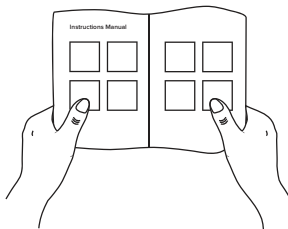
Before you start...



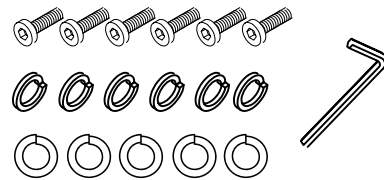
Ensure you have received all cartons and familiarize yourself with the workload. Make sure there are enough helping hands to assist you, and that you have allocated the time required to assemble your new product.



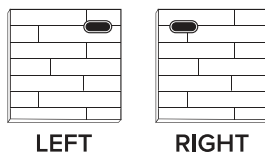
Make sure you have cleared enough space in your home for the assembly. We recommend protecting your floor with a mat or cardboard to avoid scratches during the assembly process.



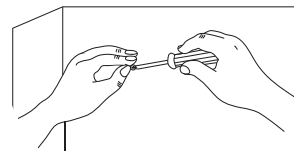
Read instructions carefully and check no parts are missing.



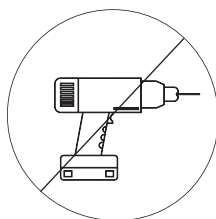
Lay out all hardware on a soft surface so you can easily identify them.



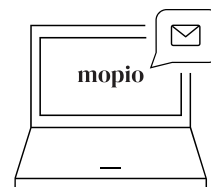
Carefully identify all components in order to differentiate which pieces are left and right.



Install your new product carefully following the instructions. Don't skip ahead!



DO NOT over tighten screws or use a drill. It will damage the product.



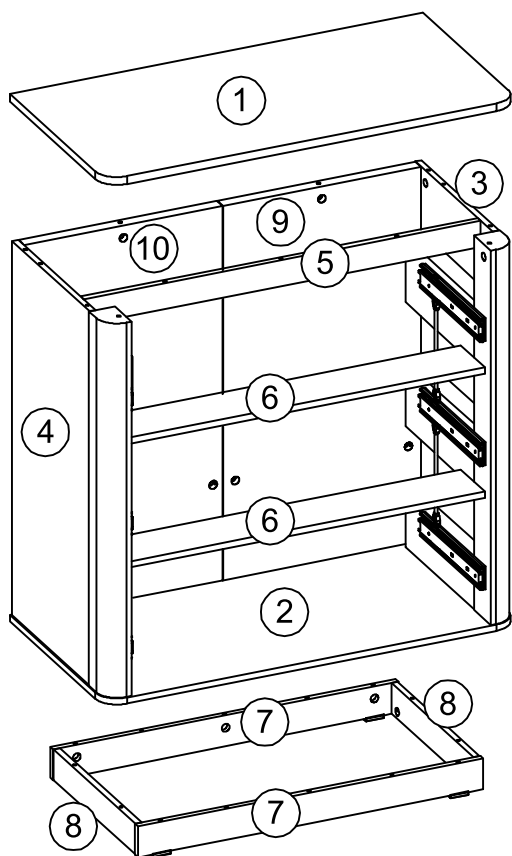
If you need further assistance with assembling your product, please contact us _____

Parts

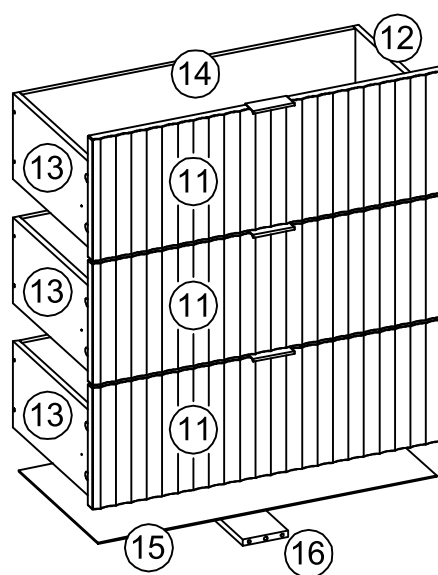
<input type="checkbox"/> ① x1	<input type="checkbox"/> ⑦ x2	<input type="checkbox"/> ⑬ x3
<input type="checkbox"/> ② x1	<input type="checkbox"/> ⑧ x2	<input type="checkbox"/> ⑭ x3
<input type="checkbox"/> ③ x1	<input type="checkbox"/> ⑨ x1	<input type="checkbox"/> ⑮ x3
<input type="checkbox"/> ④ x1	<input type="checkbox"/> ⑩ x1	<input type="checkbox"/> ⑯ x3
<input type="checkbox"/> ⑤ x1	<input type="checkbox"/> ⑪ x3	
<input type="checkbox"/> ⑥ x2	<input type="checkbox"/> ⑫ x3	

Attention:

Before you start, we suggest you identify and separate the components into 2 groups:

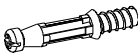

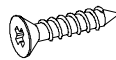
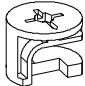

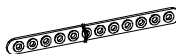

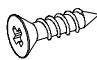
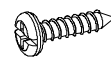

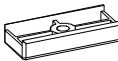

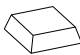
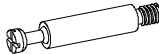
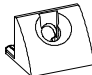


Component No.1 – 10:
for assembly steps 1 – 12



Component No.11 – 16:
for assembly steps 13 – 27

Hardware

<input type="checkbox"/>		Cambolt Ø 6 x 35 mm	<input type="checkbox"/>		Barrel Nut Ø15 x 10 mm	<input type="checkbox"/>		Screw Ø 6 x 19 mm
	(A)	x44		(G)	x2		(M)	x6
<input type="checkbox"/>		Camlock Ø 15 mm	<input type="checkbox"/>		Handle 80 mm	<input type="checkbox"/>		Wall Tipping
	(B)	x46		(H)	x3		(N)	x2
<input type="checkbox"/>		Sticker Ø 25 mm	<input type="checkbox"/>		Screw Ø 6 x 12 mm	<input type="checkbox"/>		Screw Ø 6 x 12 mm
	(C)	x14		(I)	x10		(O)	x20
<input type="checkbox"/>		Dowel Ø 6 x 30 mm	<input type="checkbox"/>		Foot Mate			
	(D)	x54		(J)	x4			
<input type="checkbox"/>		Screw Ø 6 x 52 mm	<input type="checkbox"/>		Bumper 12 x 12 mm			
	(E)	x18		(K)	x4			
<input type="checkbox"/>		Connecting bolt Ø 7 x 32 mm	<input type="checkbox"/>		Wedge			
	(F)	x2		(L)	x6			



This product will require 2.5hrs for assembly. We hope that you will enjoy the assembly process and hang in there!



There are inner box(es) that include components required to complete this assembly.



Please do not completely tighten all the hardware, until each assembly step is complete.



Before discarding the packaging, please use the checklist to ensure that you have all the parts required to assemble your product. Please kindly note you will need the original package if you want to return the product later.



If parts are missing or damaged, we will gladly ship your replacements parts free of charge.



x1



x2

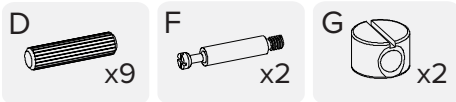
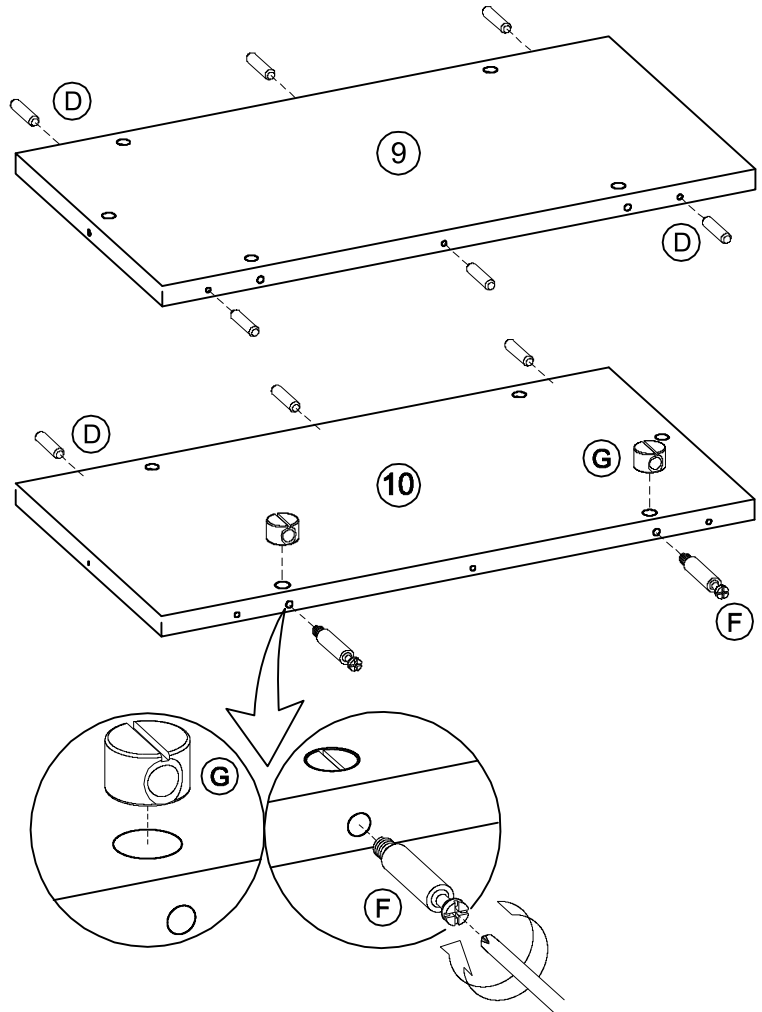
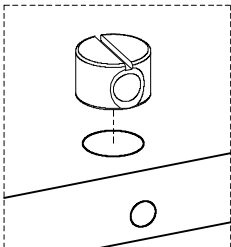
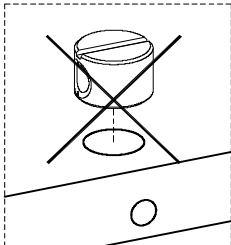


2.5 hours

Step 1

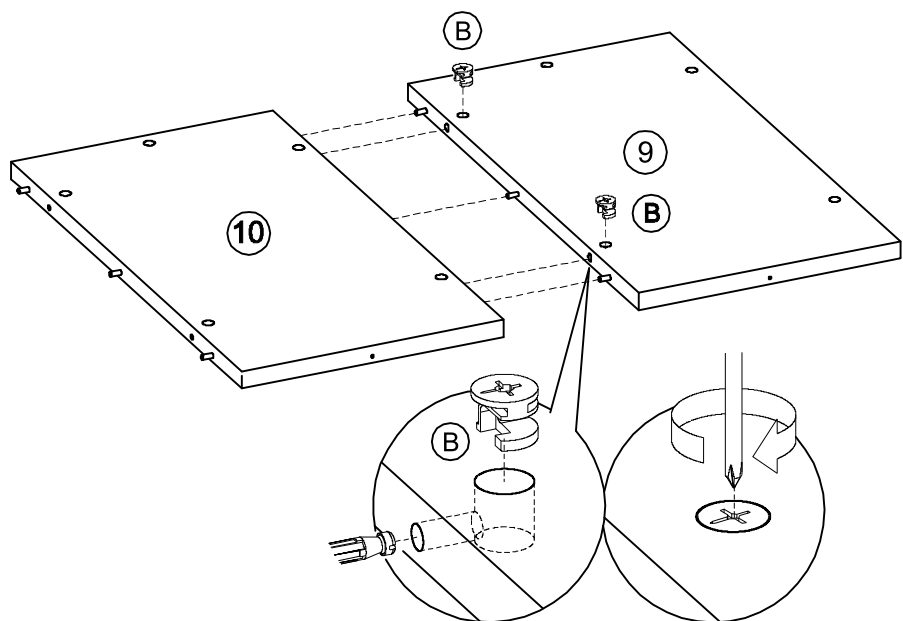
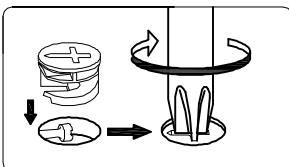
Ensure that your floor is properly protected.

We recommend using cardboard or foam to lift the panels in order to prevent scratches.

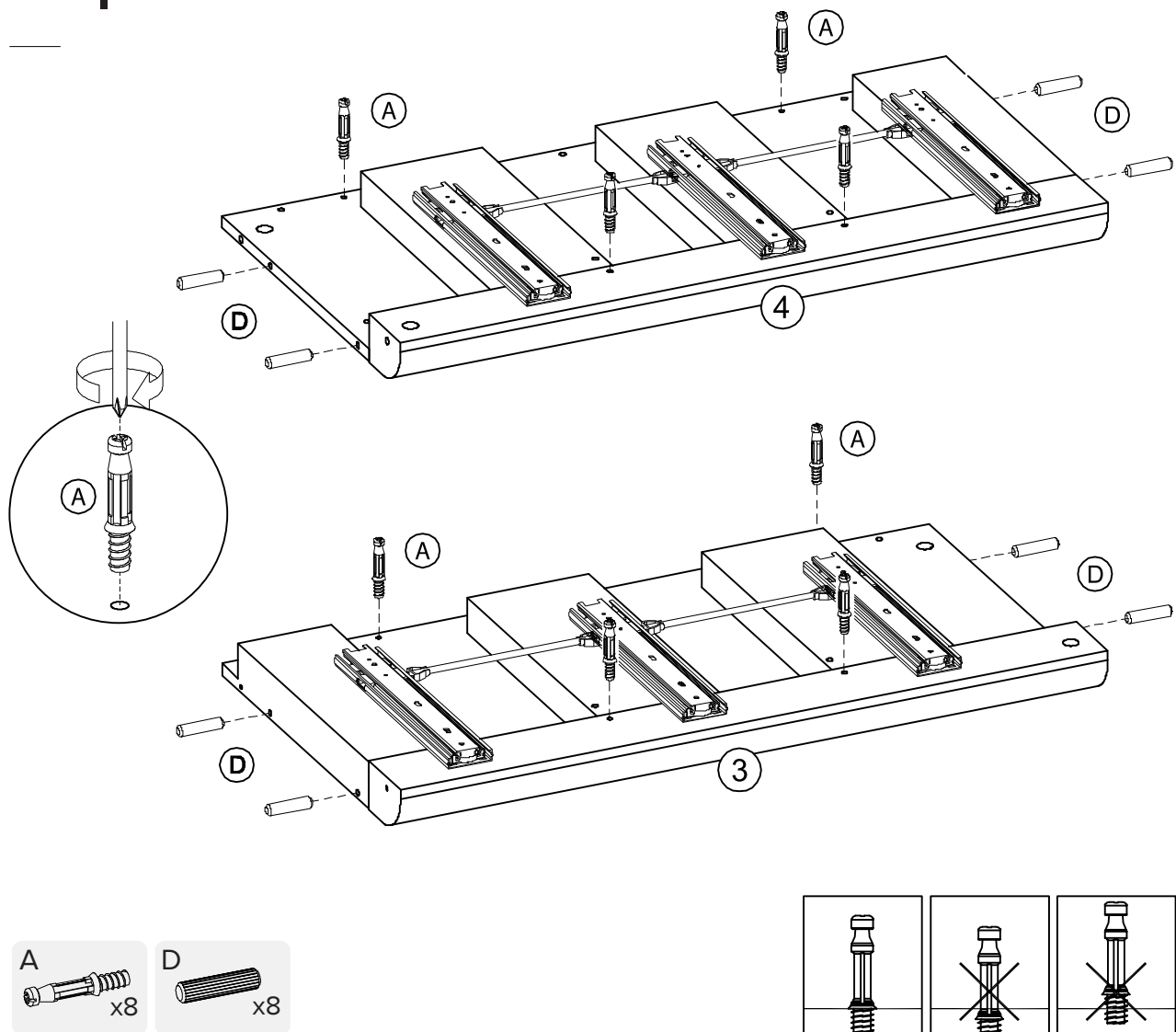


Step 2

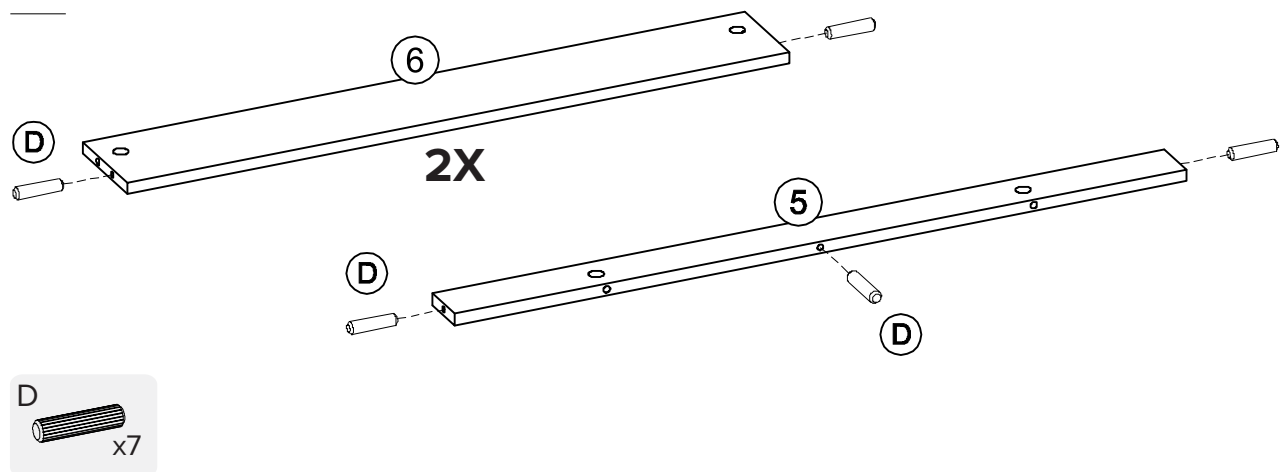
Please ensure that camlock is facing the correct orientation. Check the illustration carefully.



Step 3



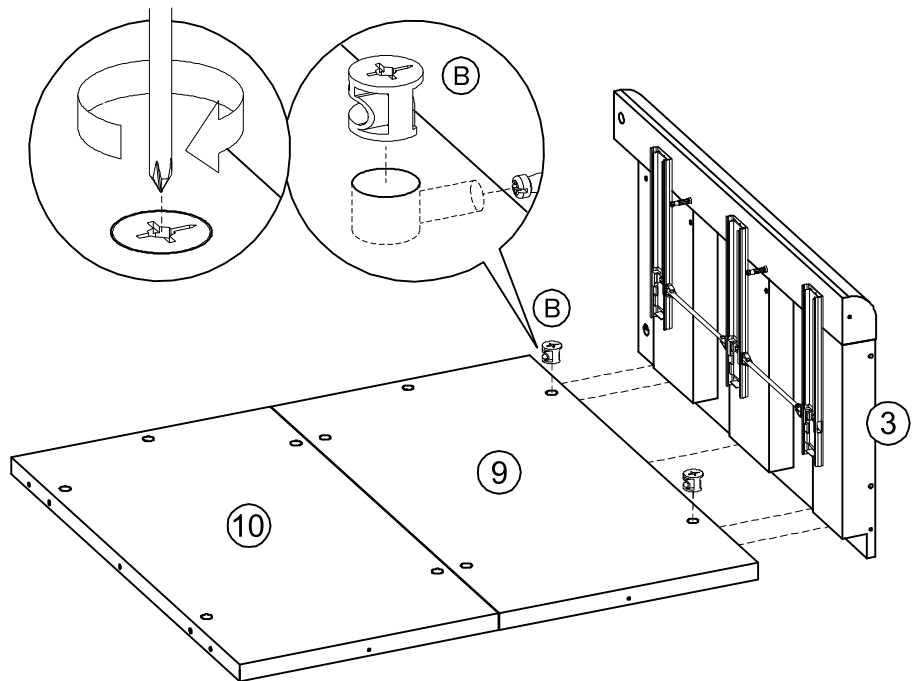
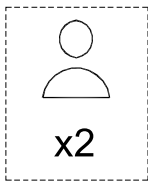
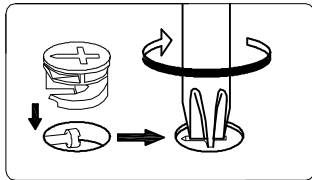
Step 4



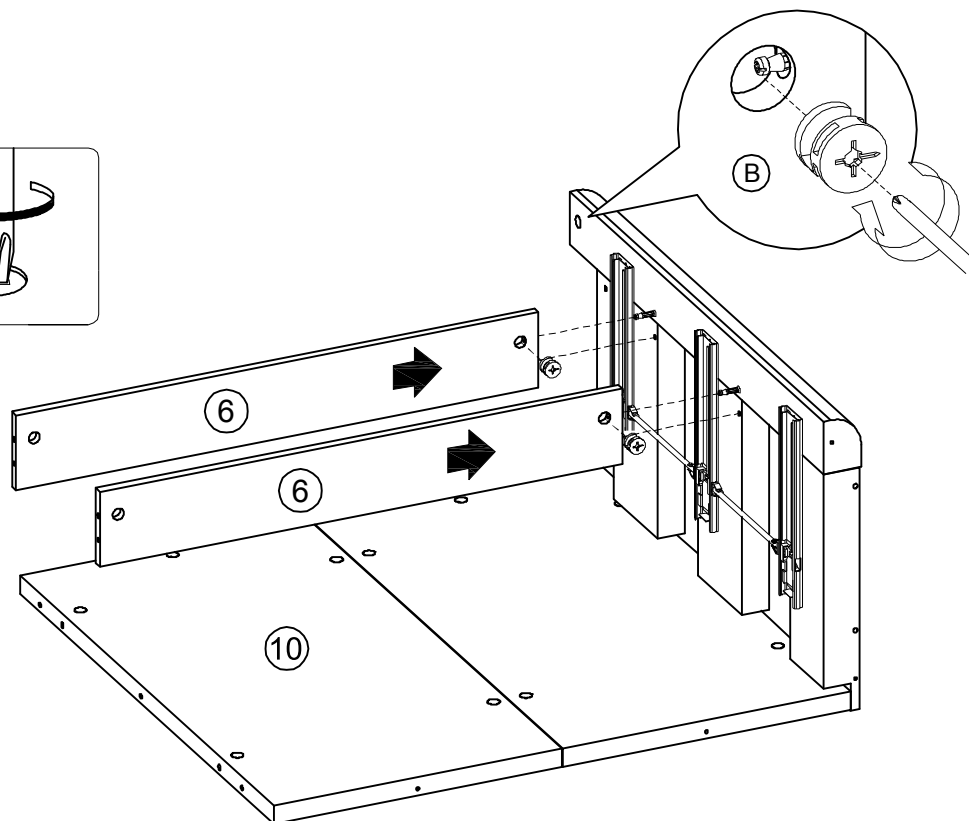
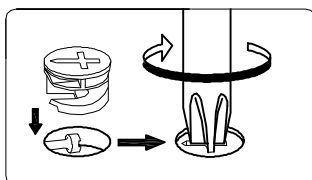
Step 5

Install panel (3) onto panel (9) by inserting camlock (B) and tightening it with a screw driver.

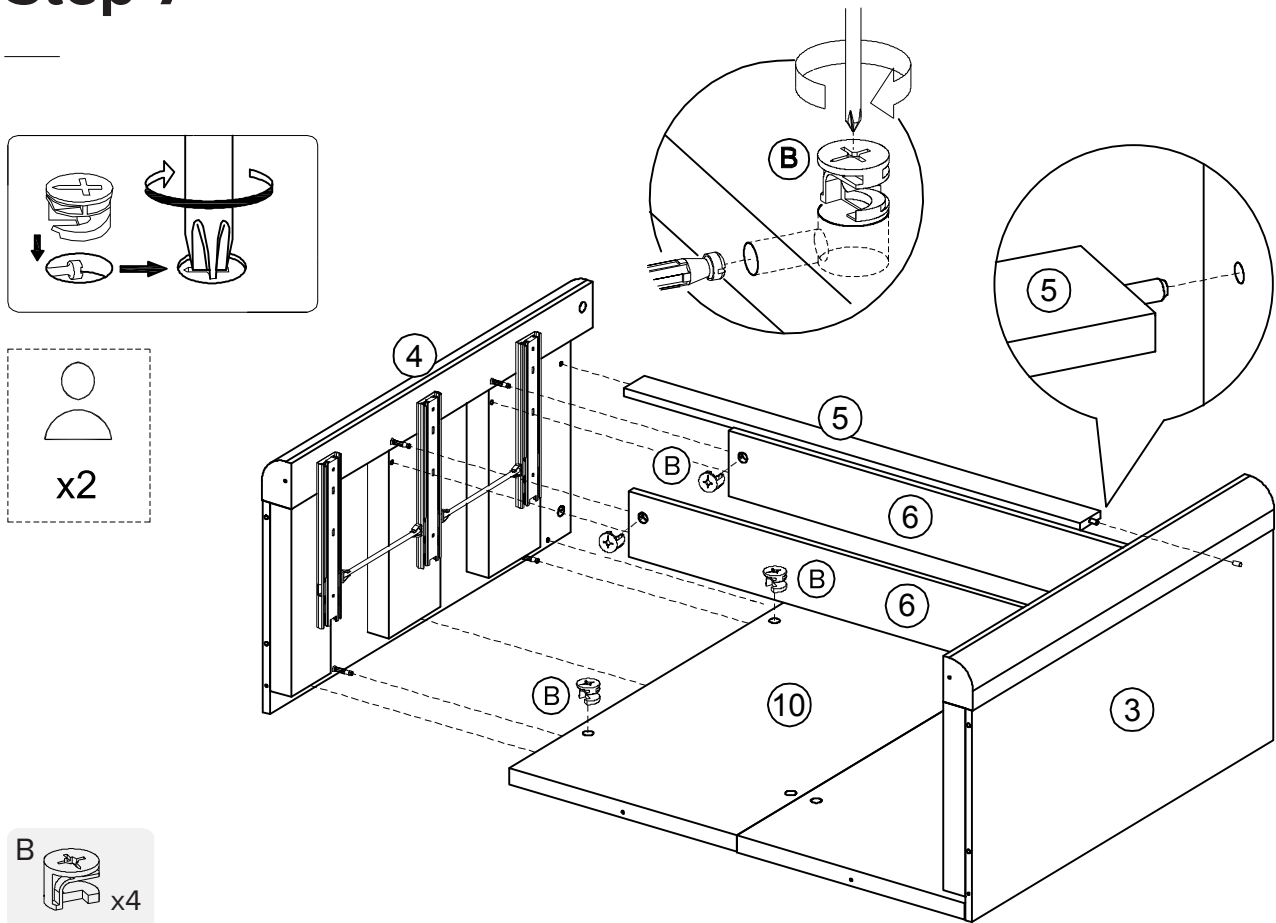
2 Pax will be needed to carry the weight of the parts.



Step 6



Step 7



Step 8

Illustration 1

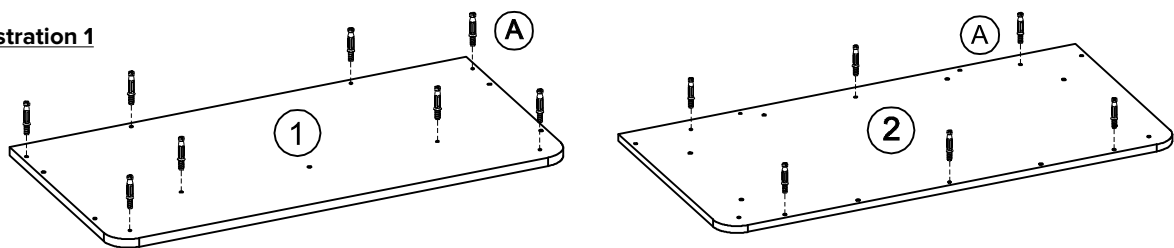
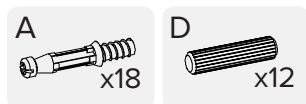
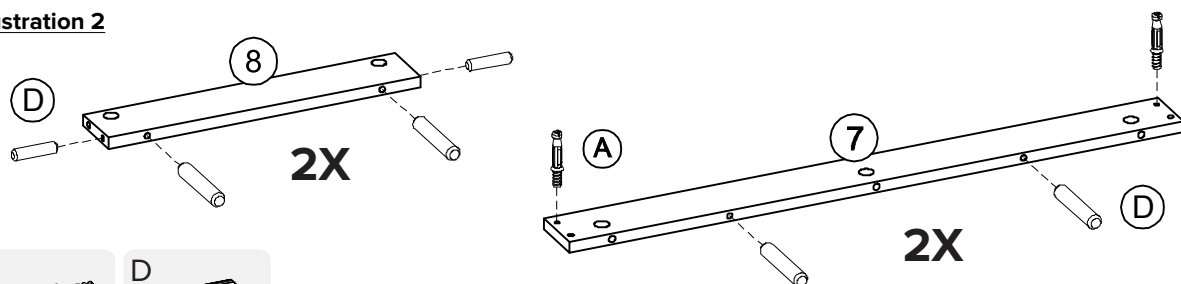
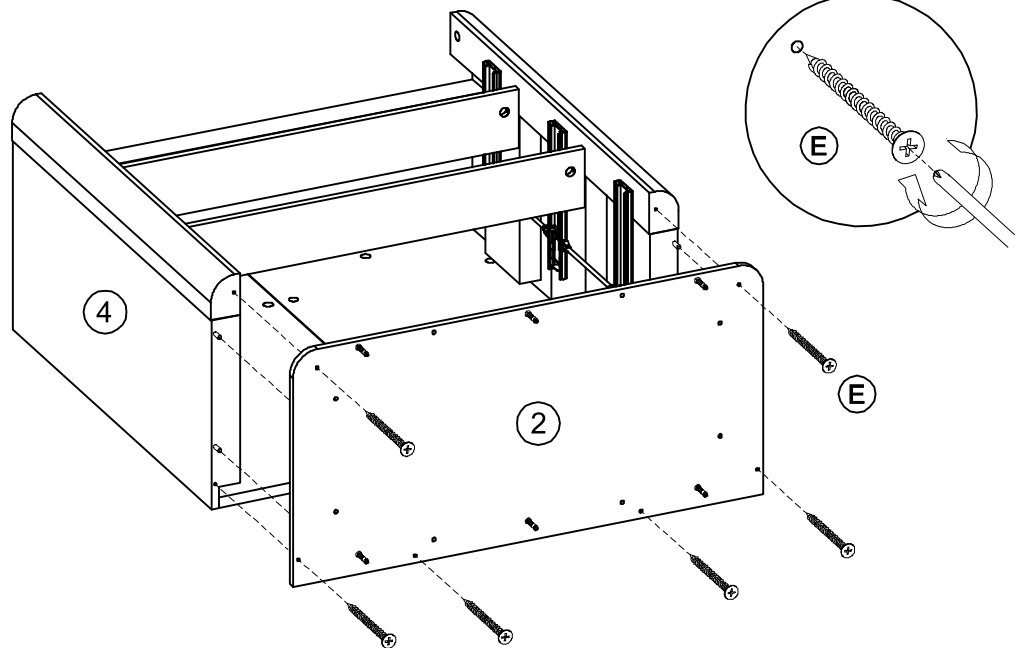
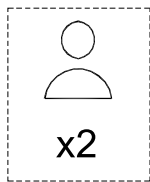


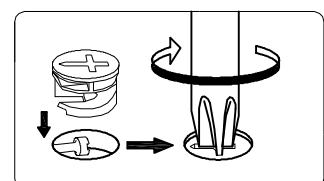
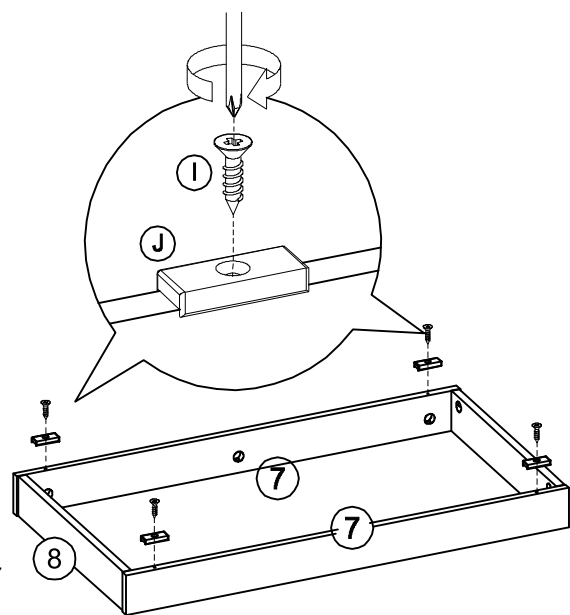
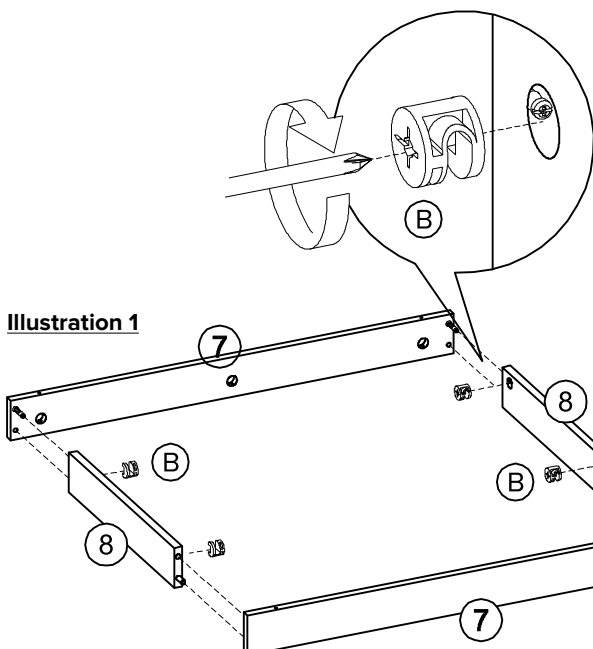
Illustration 2



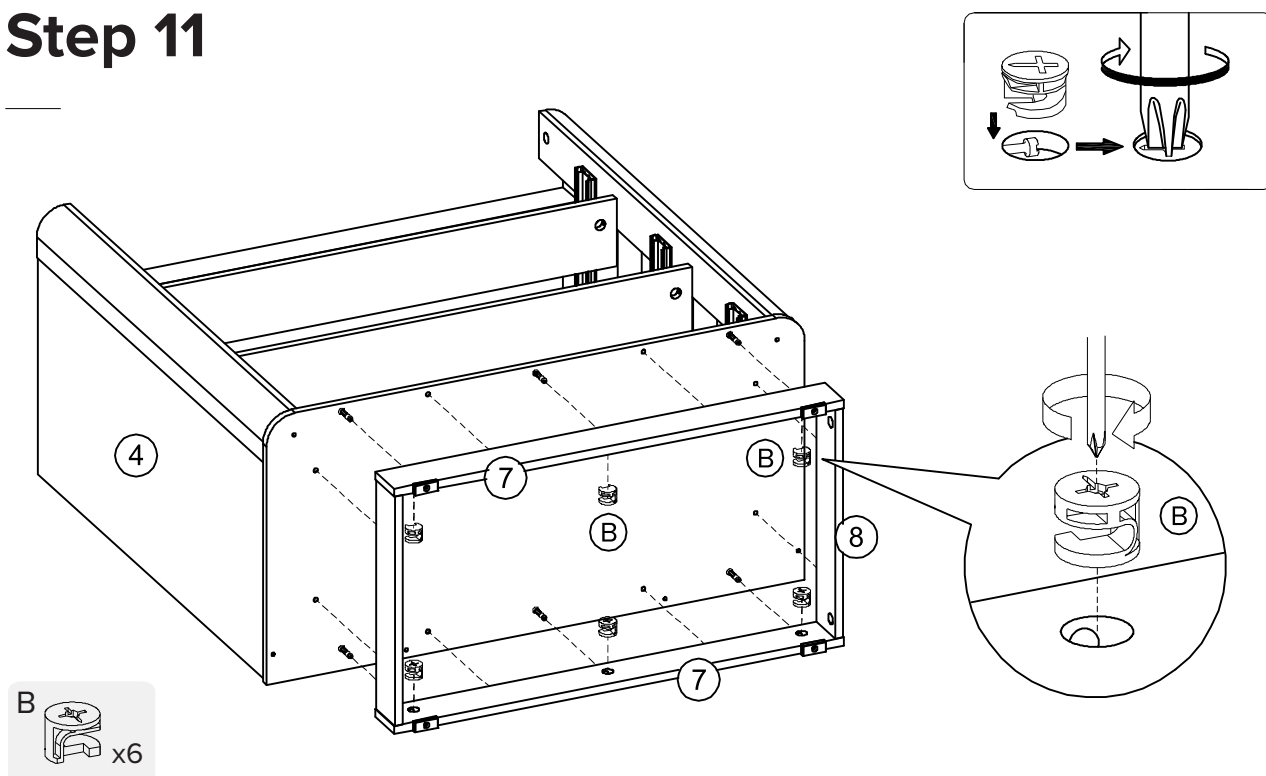
Step 9



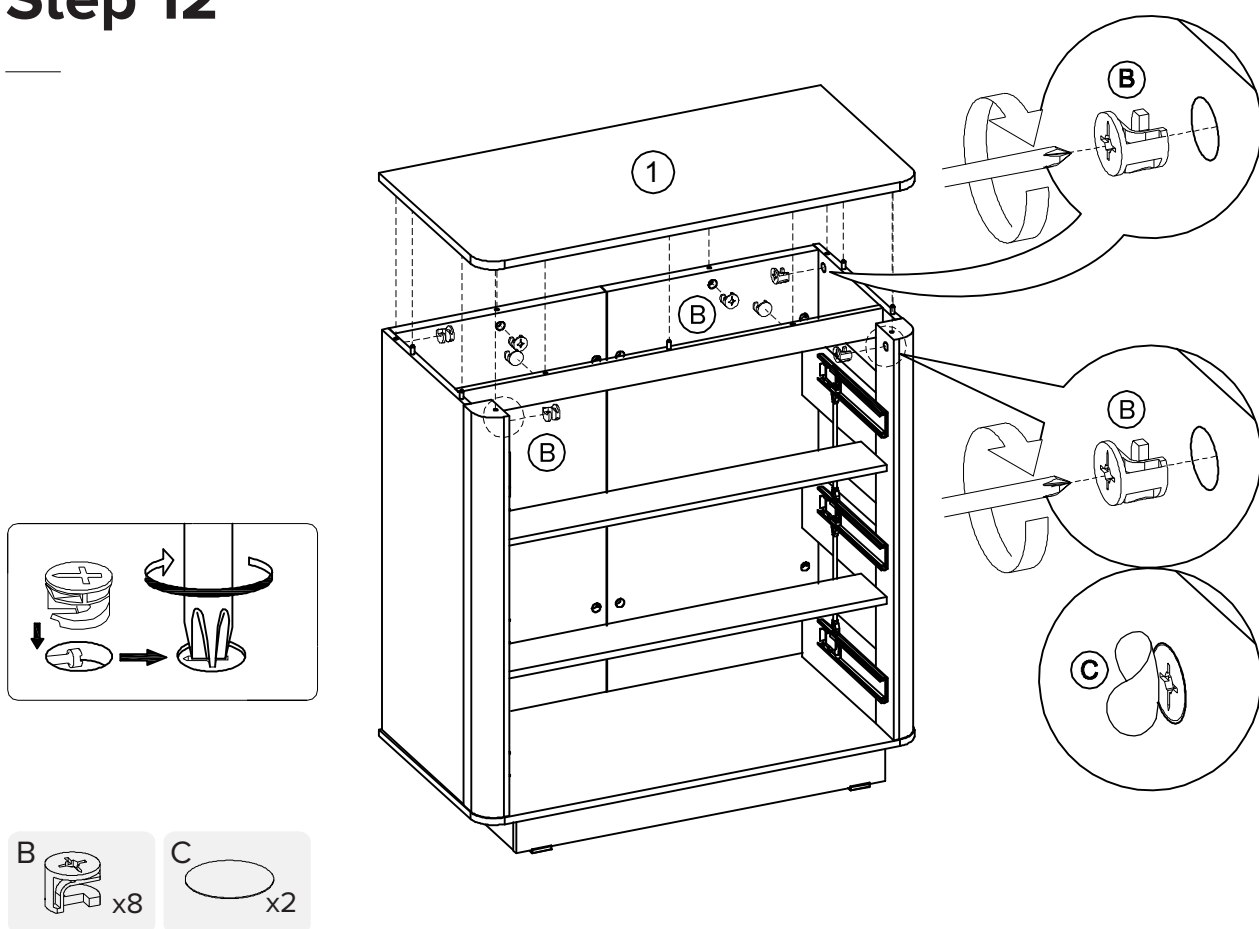
Step 10



Step 11



Step 12



Step 13

3X

Illustration 1

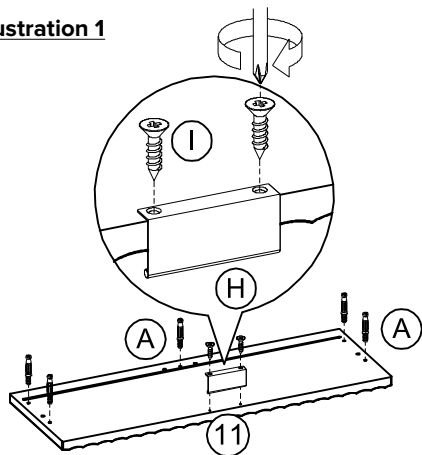


Illustration 2

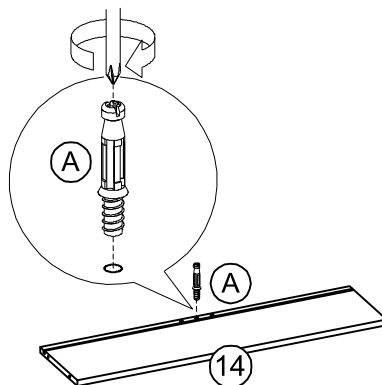
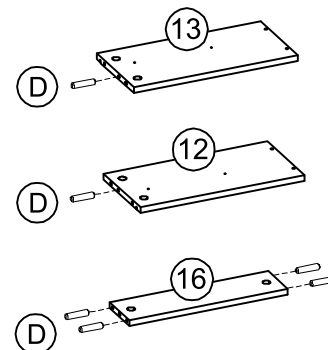
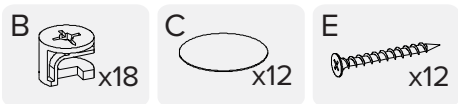
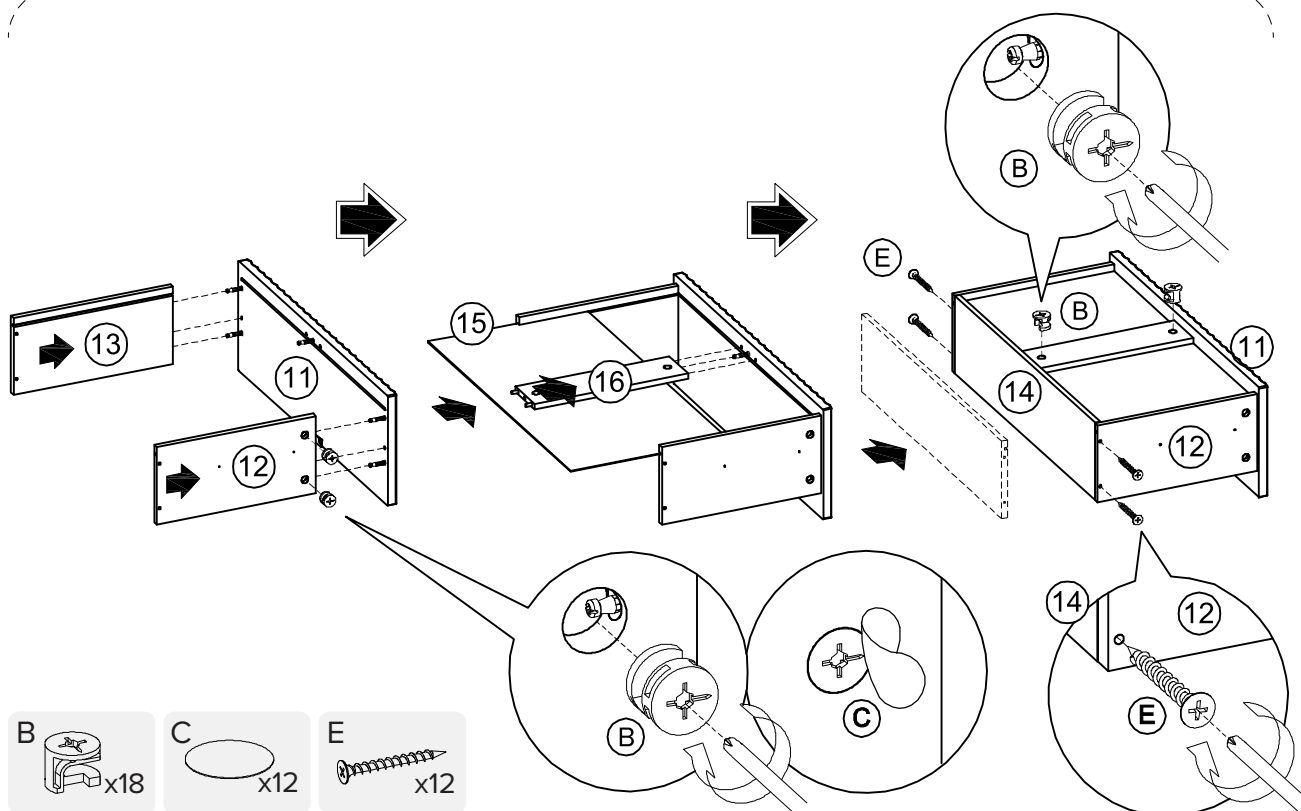


Illustration 3

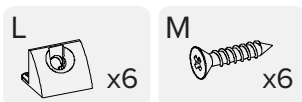
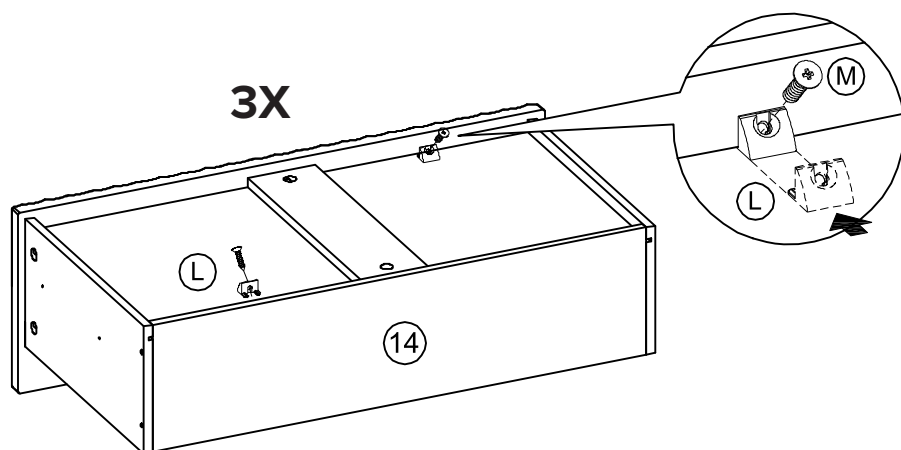


Step 14

3X



Step 15



Step 16

Place Bumpers (K) onto horizontal frame of Assembled Unit.

Make sure the Drawer runners position is level.

Illustration 1

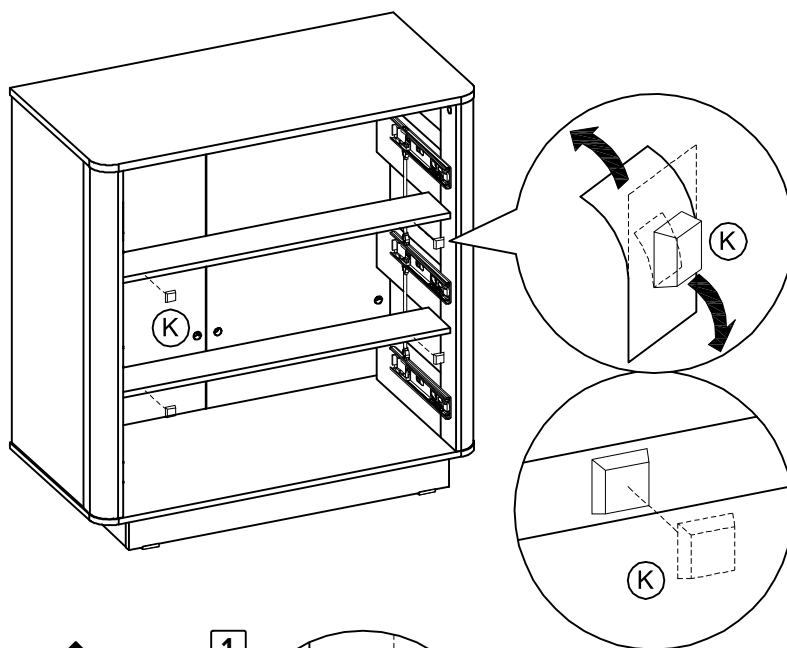
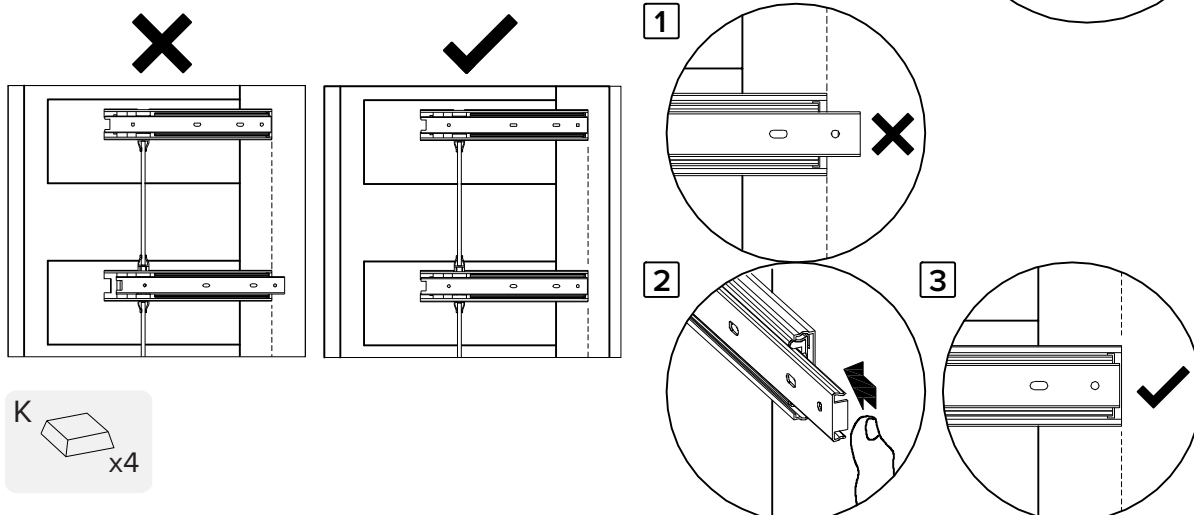


Illustration 2

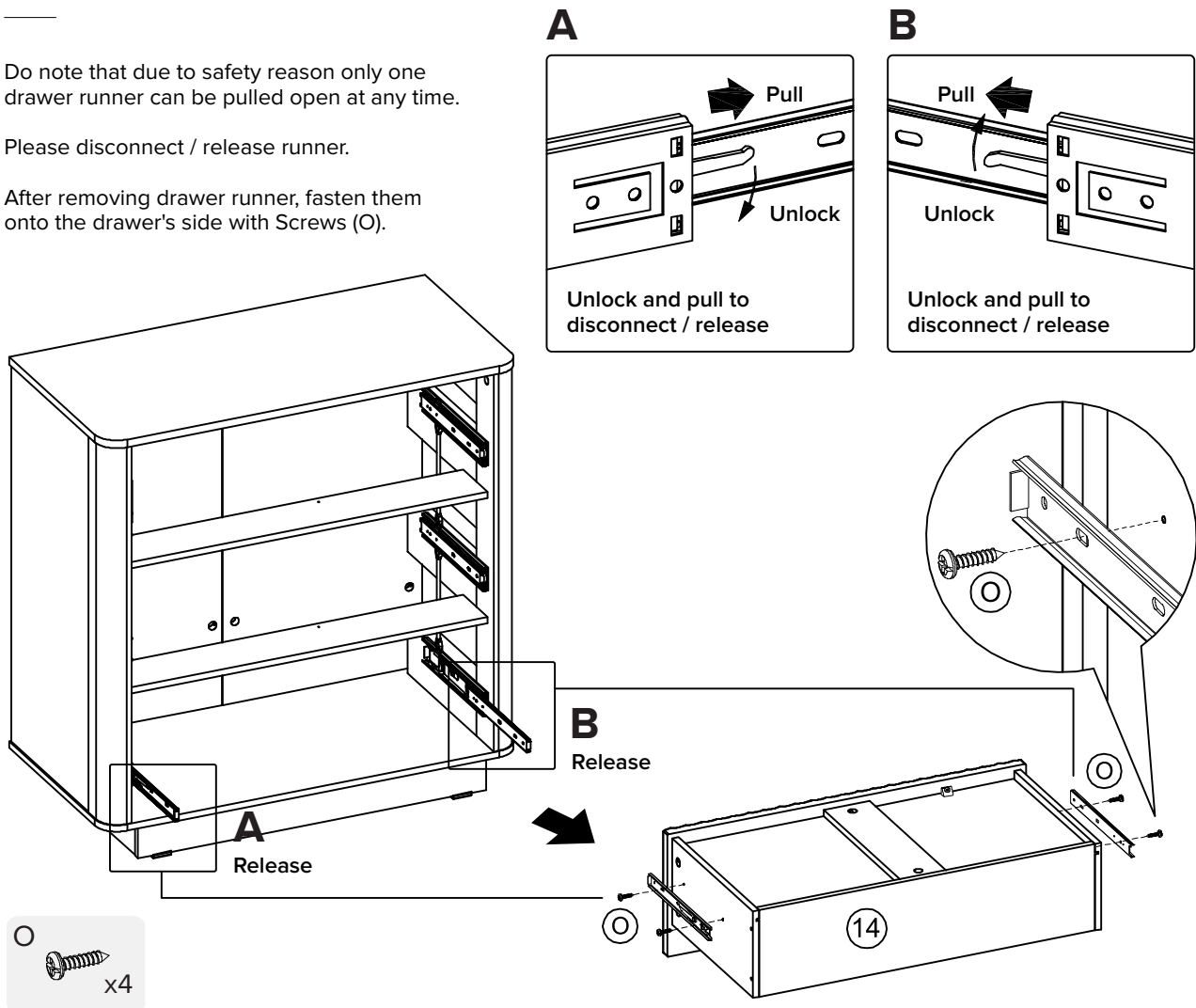


Step 17

Do note that due to safety reason only one drawer runner can be pulled open at any time.

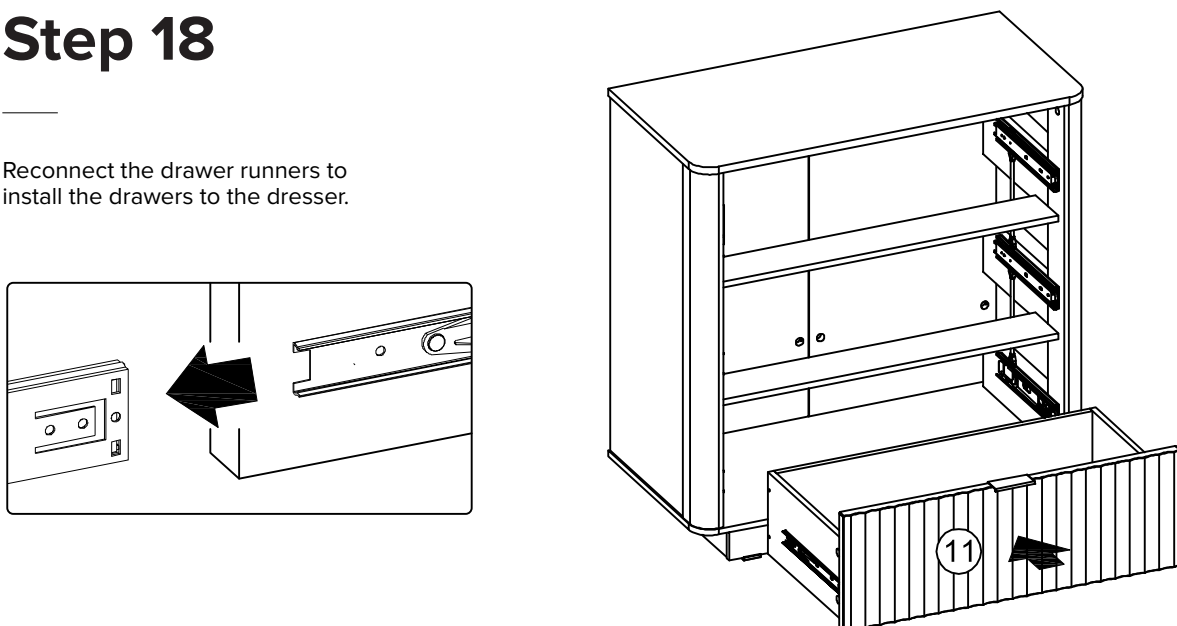
Please disconnect / release runner.

After removing drawer runner, fasten them onto the drawer's side with Screws (O).



Step 18

Reconnect the drawer runners to install the drawers to the dresser.

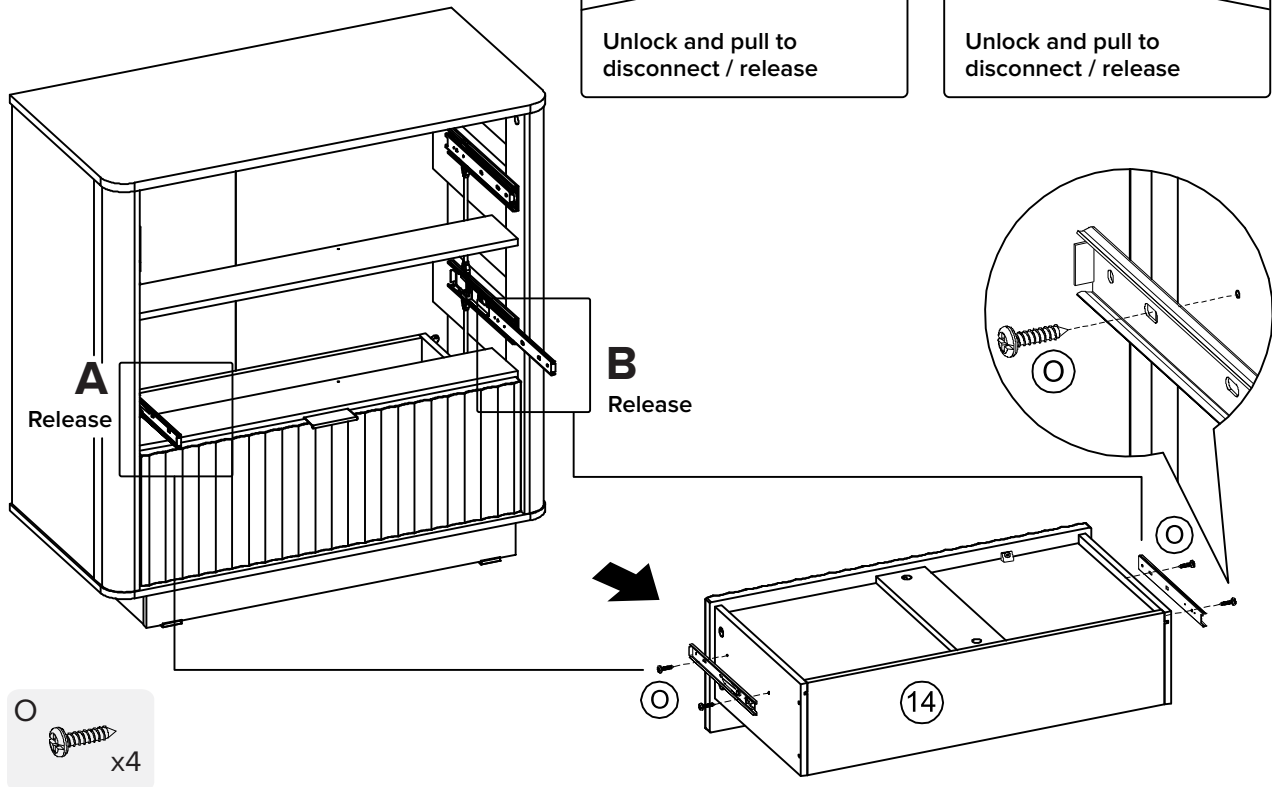


Step 19

Do note that due to safety reason only one drawer runner can be pulled open at any time.

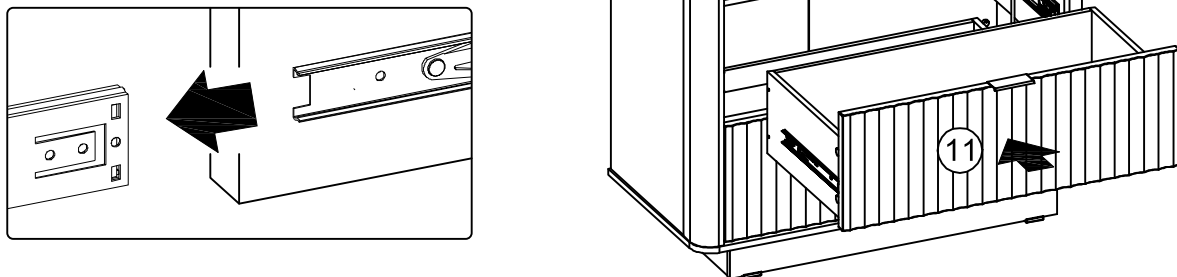
Please disconnect / release runner.

After removing drawer runner, fasten them onto the drawer's side with Screws (O).



Step 20

Reconnect the drawer runners to install the drawers to the dresser.

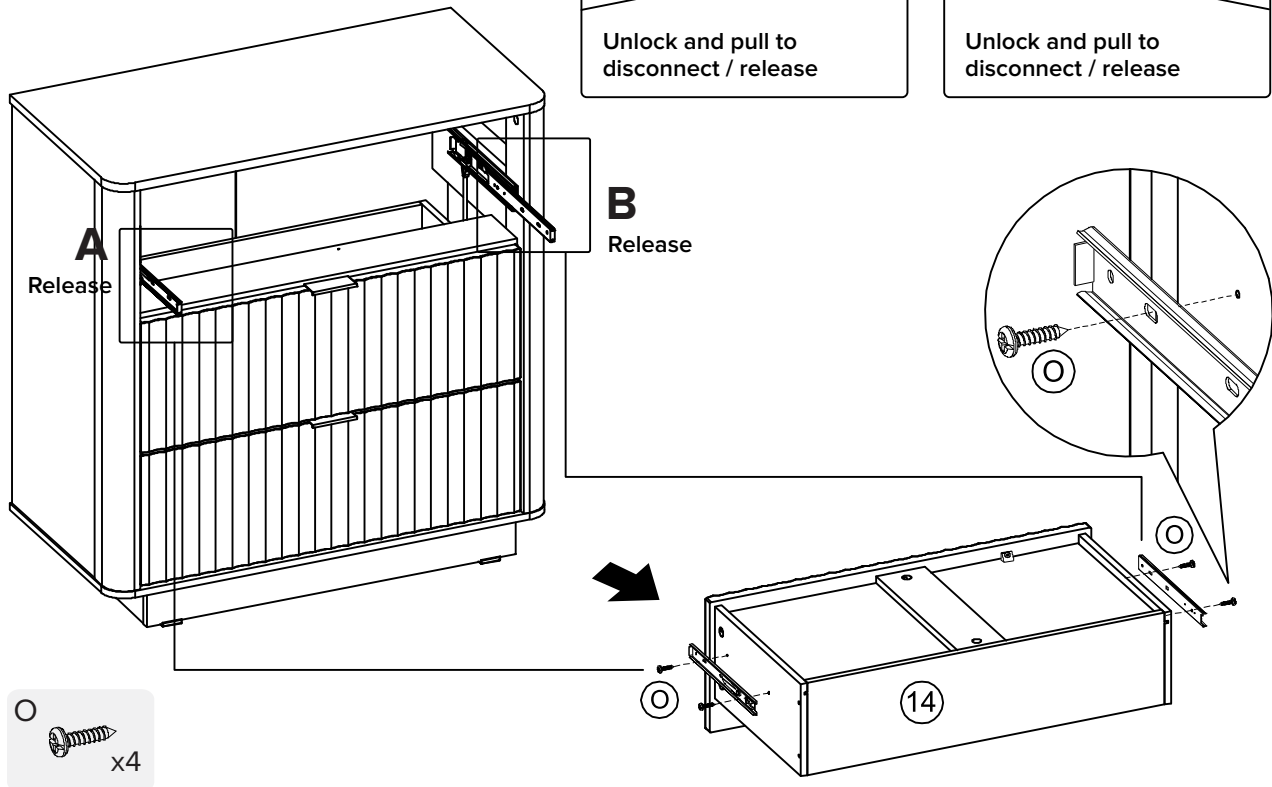


Step 21

Do note that due to safety reason only one drawer runner can be pulled open at any time.

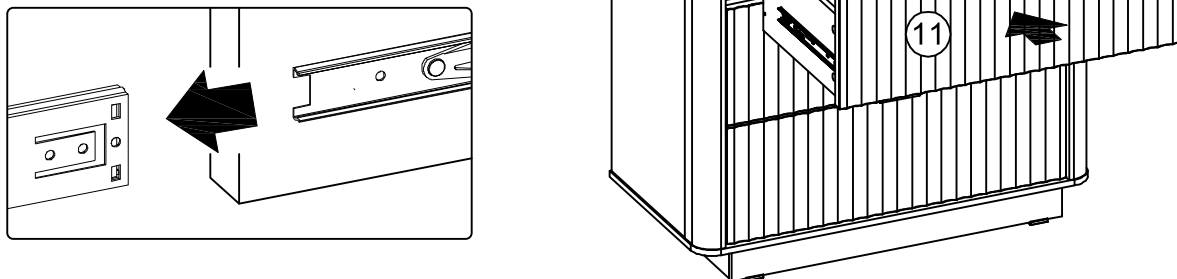
Please disconnect / release runner.

After removing drawer runner, fasten them onto the drawer's side with Screws (O).



Step 22

Reconnect the drawer runners to install the drawers to the dresser.



Step 23

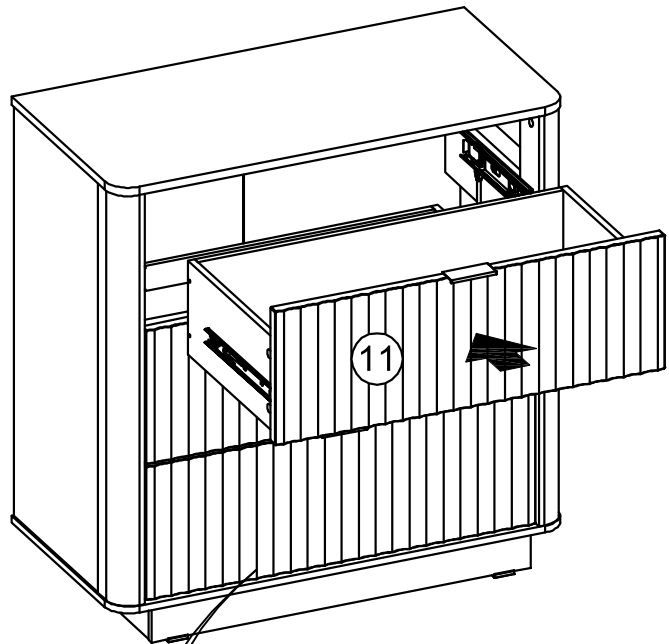
Insert drawers into the Chest as shown.

Detail 1:

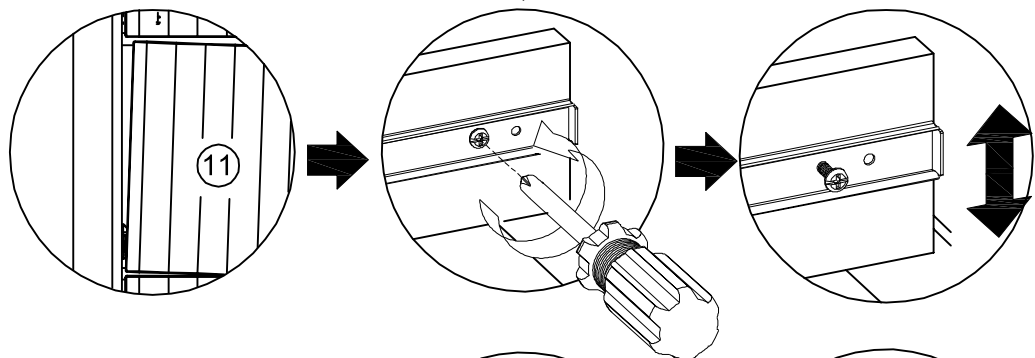
In the event of misaligned Drawer or Drawer hit the bottom panel. To adjust gaps around the Drawer, first remove the Drawer. Loosen screws (O) on the drawer runners and adjust. Drawer Runners in an up or down direction.

Detail 2:

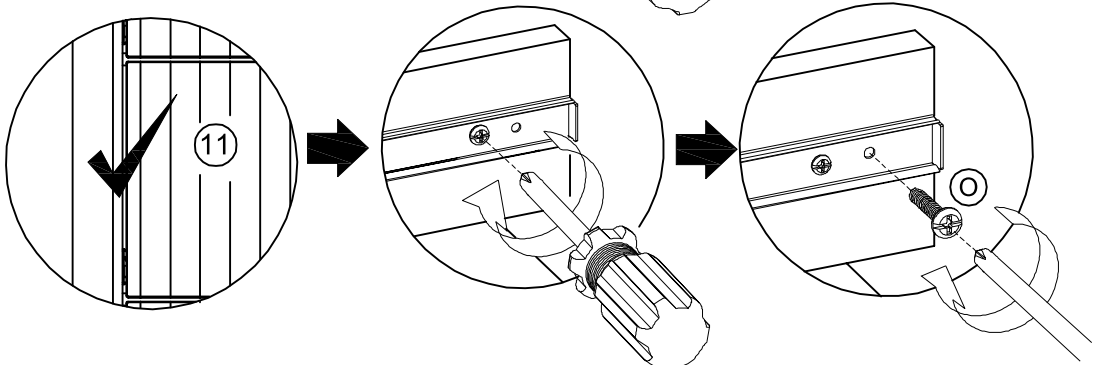
When the drawer front (11) are correctly aligned, re-tighten screws (O) on the runners. Lock the runners in place by fastening additional Screw (O) to each runner as shown.



Detail 1



Detail 2



Step 24

Anti-tip Kit

To prevent injury and property damage from unexpected tipping of furniture, we highly recommend installation of the anti-tip kit included with this product.

Check periodically the screw and change the screw position if it start to lose.

Fasten Wall Tipping (N) to Top Panel with Screws (O). With help, move the product into position.

Mark fixing hole on wall and remove product. Where necessary, drill holes and mount hardware.

Reposition product and fix using hardware recommended.



Please seek professional advice if unsure of wall constructions.

Properly affixing furniture to your wall will depend on the wall material: concrete, drywall, masonry, or wood will require the appropriate hardware.

Wall anchor is not provided, please source the right wall anchor according to the wall type.

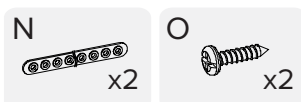
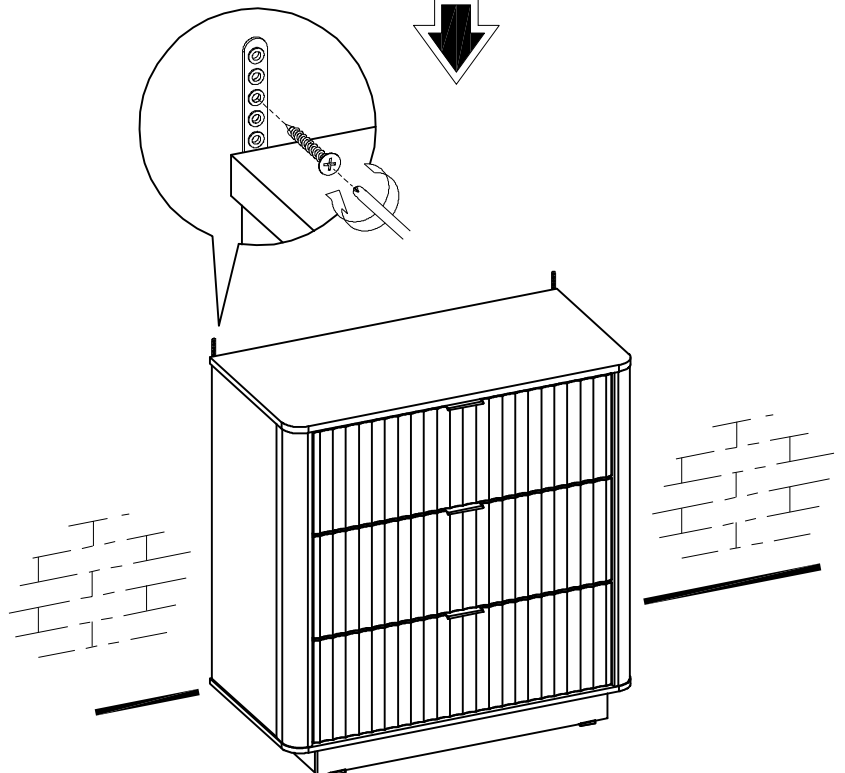
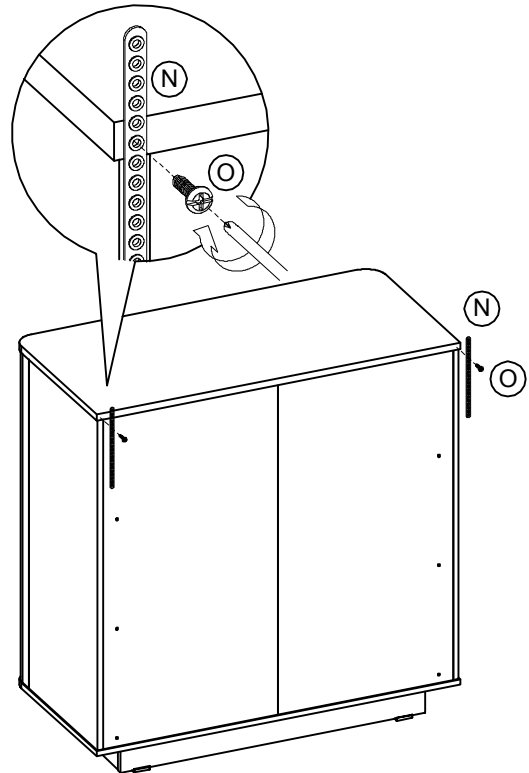
Please consult with your local hardware store to ensure you are using the correct hardware for your wall type.



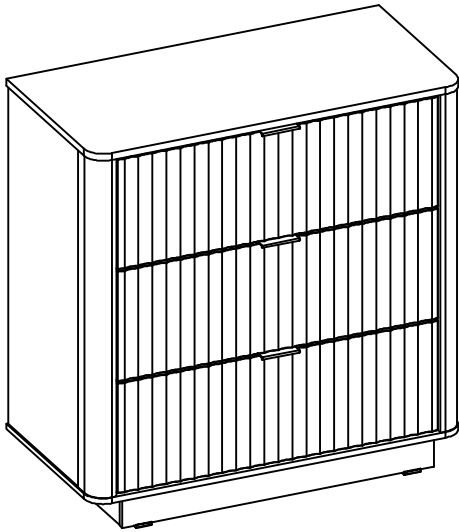
This anti-tip kit is not a substitute for proper adult supervision. This anti-tip kit may provide protection against tipping furniture.

Teach and do not allow children to climb on furniture or drawers. Always keep the heavy load at the bottom of the drawer. Do not put toys or objects on the top of dresser that can attract children to climb.

By installing anti-tip kit, you acknowledge that you are fully aware of the safety requirement and accept to adhere to it. Illustrations in this guide are for reference only and may be slightly different from the actual object.



Finished!



Congratulations, you have made it through the assembly process! We're almost there!☆

Please perform following checks to ensure assembly is properly done.

- Ensure all legs frame are fully tightened, please refer to Step 11.
- If the drawer gap is misaligned, please refer to Step 23.
- Due to safety reason, only one drawer can be opened at any time. This is to prevent the dresser from tipping over.

Move your product carefully, with 2 people lifting it to the preferred location . Clean the product with a dry cloth. You are all set!

Enjoy your fresh and updated living space thanks to the addition of your new product!

Care Instructions

Your furniture, if treated with respect and love, will last you a long time. Each piece requires light maintenance to maximize its longevity.

Few quick tips before using this product:

1. Recommended weight limit for the top is 40 lbs and 15 lbs for each of the shelf compartment.
2. Avoid uneven weight distribution for long time as it may cause damage to the product shape.
3. Drawers might not slide smoothly when dresser is overloaded by weight.
4. Check and tighten the camlock and screw periodically as it may loose over the time.
5. Check anti tipping screw periodically, change the screw position if it start to lose.

How to take care of it?

1. Avoid direct sunlight or use curtains or blinds to limit the sun exposure to the product.
2. Clean the product regularly with a dry, soft cloth.
3. Avoid using abrasive or liquid cleanser.
4. Avoid placing hot objects onto the top surface.
5. Spillage may damage the surface. Clean immediately with a dry cloth.
6. We recommend using placemats or coasters underneath glasses, cups, bowls or plates to prevent scratches to the table surface.

Follow the care instructions and look after your furniture, in return, your furniture will look after you.

We hope to see you soon!

Warranty & Return

1 YEAR LIMITED WARRANTY STATEMENT FOR MANUFACTURING DEFECTS

Please read this limited warranty carefully. To maintain your warranty, you will need to comply with the conditions stated here. This warranty is for manufacturing defects only and does not cover damages as a result of misuse.

1. Please be sure to register your product to receive up to date warranty and product information.
2. Your new product comes with 1-year warranty against manufacturing defects. The warranty starts on the date of purchase. No warranty will be honoured without an original sales receipt. The warranty and financial responsibility of the manufacturer only applies to the products itself.
3. Manufacturing defects include circumstances where the product has broken under normal use and no longer provides proper support. In the event you encounter a manufacturing defect, please stop using this product immediately and contact customer service.
4. This warranty applies only when the product has been properly used by consumers who purchased the product from authorized channels as a new product. Proper use means using the product on a level surface where all legs touch the floor with an equal distribution of weight. Proper use also means that the product was not abused by the consumer, as defined by the manufacturer. This warranty does not constitute agreement to replace other parts.
5. If the product fails due to manufacturing defects, the manufacturer will repair or replace at its discretion and reserves the right to substitute comparable materials or models and does not guarantee that the replacement part will match existing pieces.
6. In the event the product needs to be inspected by the manufacturer to determine a warranty claim, the transportation cost or removal cost is borne by the consumer.

30-DAY RETURN POLICY

We believe you will be thrilled with your purchase from us. That's because we go out of our way to ensure that products are designed and built to be just what you need. We understand, however, that sometimes a product may not be what you expected it to be. In that event, we invite you to review the following terms related to returning a product.