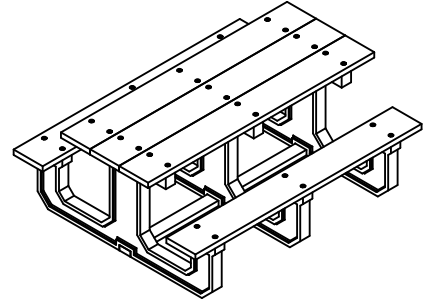
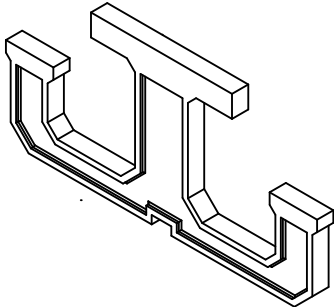


Park Place 8 Ft Assembly Instructions

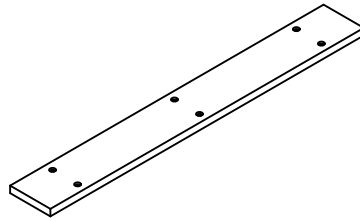


Tools for Assembly: Powered driver or drill
Socket Wrench
7/16 & 3/4 Socket
Tape Measure

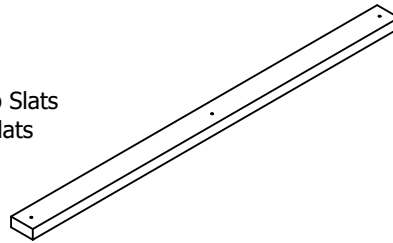
Components



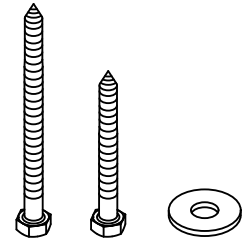
(3) Table Bases



(3) Table Top Slats
(2) Seat Slats



(1) Base Support Slat



Hardware

- (30) 4" Hex Lag Screws
- (3) 3 1/2" Hex Lag Screws
- (3) Flat Washers

Step by Step Assembly

Before you begin: Check components to verify all are included. Assembly requires two people and must be performed on a flat and even surface. Do not overtighten hardware as damage can occur.

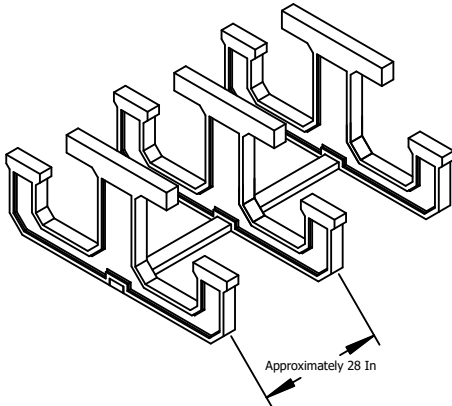


Illustration 'A'

Step 1

Using the base support slat as a guide, position the three (3) bases spaced evenly on a flat surface. The center base will be approximately at 36" on center from the two (2) outer bases. Do Not Attach Base Support Slat At This Step. Ensure all three (3) bases are square and plumb. See Illustration 'A'.

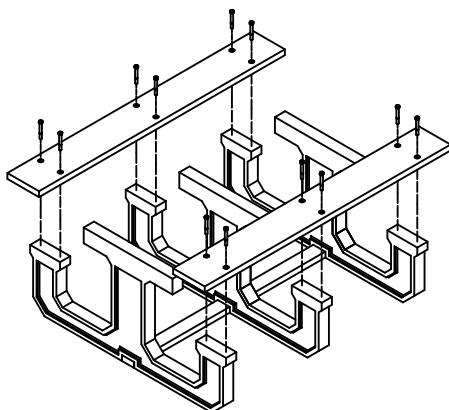


Illustration 'B'

Step 2

Ensure the bases remain square and plumb, place one seat slat across the bases on each side, the pre-drilled holes should align with the approximate center of the base attachment surface. Drill a 3/8" starter hole in the base at each end using the pre-drilled holes in the seat slats as a guide. Loosely attach with the 4" hex head lag screws. Drill 3/8" starter holes in the seat slats and attach with 4" hex head lag screws. See illustration 'B'.

Step by Step Assembly Continued

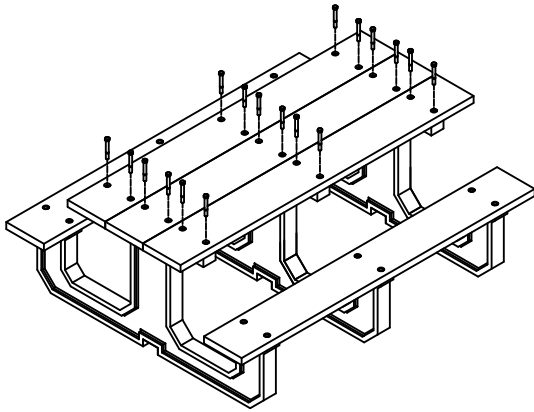
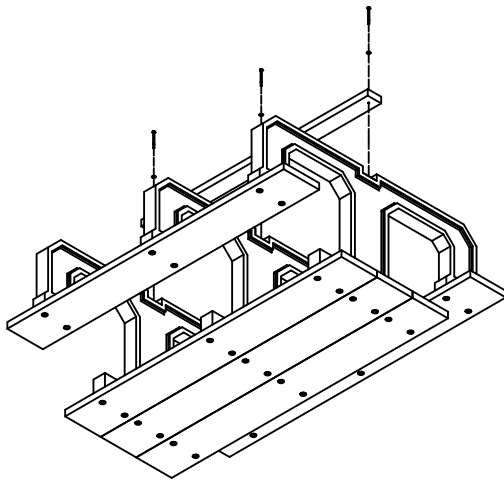


Illustration 'C'

Step 3

Place the table slats on top of the bases aligning the pre-drilled holes with the attachment surface of each base. Ensure they are square and centered. Drill a 3/8" starter hole on each table slat at the pre-drilled hole location. Attach using the 4" hex lag screws. See Illustration 'C'.



Step 4

Using two people, flip the table over and carefully place it upside down resting on the top slats. Attach base support board with 3 1/2" hex lag screws and flat washers. Rotate assembled table back upright. See Illustration 'D'.

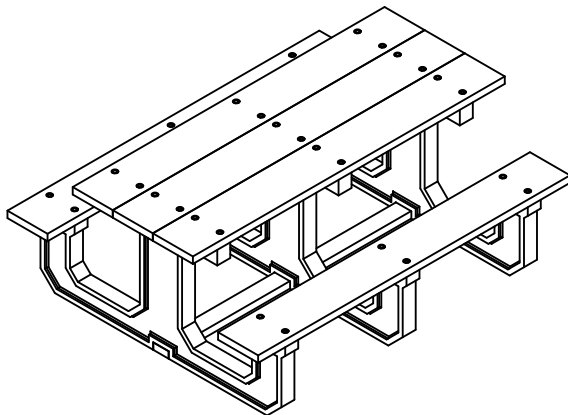


Illustration 'D'

Cleaning Tips

Frog Furnishings products are durable and designed to last a lifetime, like most things that spend the majority of time outdoors, sometimes they need a little cleaning. In most cases, all a Frog product requires is mild dish soap, a bucket of warm water and a clean cloth. Apply the soapy mixture to scrub away the dirt and then rinse with water. If you have some stubborn dirt down in the grooves and divots, mix 1 part bleach to 2 parts water, apply with your clean cloth, scrub with a soft bristle brush if needed and then rinse.