

ASSEMBLY INSTRUCTIONS

Before you commence the assembly process we recommend that you read these instructions thoroughly beforehand to familiarise yourself with the assembly process and to also check that you have the correct components. If for any reason you need assistance, you can find our contact details on the final page of these instructions.

We highly recommend that any assembly is carried out on a flat, level surface if possible and that you use another person to assist you if necessary.

PACKAGE CONTENTS

- 1 x Table top
- 2 x Seat panels
- 2 x Table leg-frames
- 2 x Cross braces
- 4 of M8 x 60mm Bolts and self locking nuts
- 2 of M8 x 50mm Coach screws
- 12 of M8 x 70mm Coach screws
- Cover caps and washers

TOOLS REQUIRED

- 10mm socket or spanner



PICNIC BENCH

Step 1



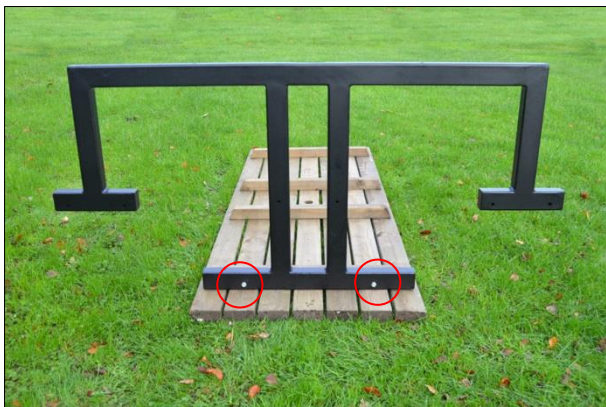
Ensure that you have all of the correct parts as listed on the front page of these instructions, including any fixings.

Step 2



Lay the table top upside down on a clean, flat surface taking care not to damage it. Now line up one of the table A-frames centrally on the table top, ensuring that the gap at the table edge is the same on both sides.

Step 3



Now, using 2 of the supplied 70mm coach screws secure the table A-frame to the fixing batten on the table top...

Step 4



...and then repeat for the other end of the table.

PICNIC BENCH

Step 5



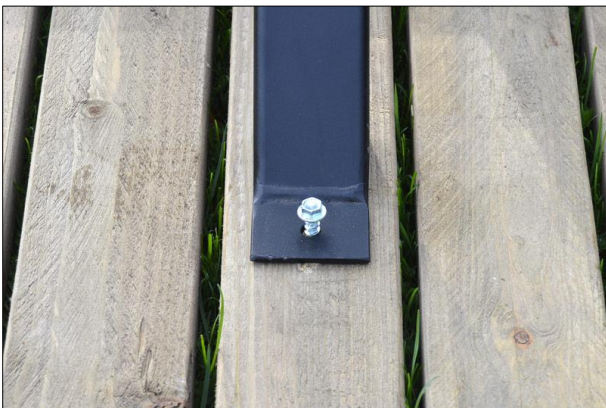
In preparation for attaching the cross brace (as shown in figure 8) place a bolt and washer through each of the two holes in the leg-frame uprights....

Step 6



...and then offer up the the cross brace and loosely secure using a washer and a locknut for each of the two holes

Step 7



Now attach the other end of the cross brace to the underside of the table top using one of the 50mm coach screws and 2 washers, ensuring that the hole is centrally aligned across the middle slat of the table top.

Step 8



Now tighten all of the nuts and bolts...

PICNIC BENCH

Step 9



...before repeating steps 5 to 8 for the other end of the table.

Step 10



After turning the table right side up, place each of the two seat panels onto the frame assembly, aligning the panels centrally across the support as shown...

Step 11



...and using the 70mm coach screws provided attach the seat panels to the leg-frame at both ends of the bench.

Step 12



Finally, cover any exposed coach screw/nut heads with the cover caps provided. Your Tinwell steel picnic bench is now complete.