

Product Parameters

Mirror Cabinet

Input:220-240V AC 50/60Hz

Lamp:SMD LED,12W Max

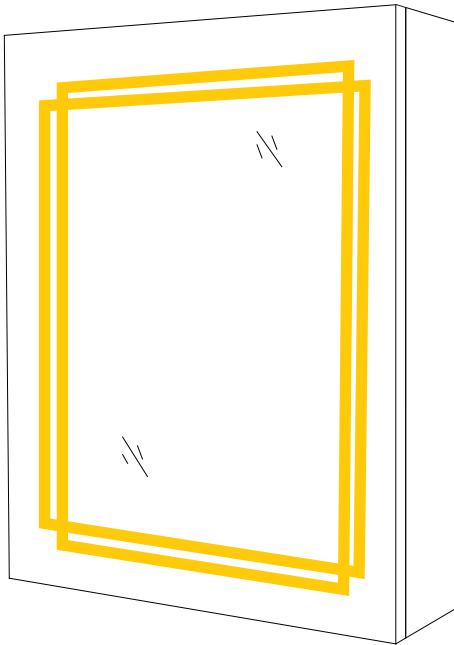
Size:500 *700mm W*H

Date:08/2025

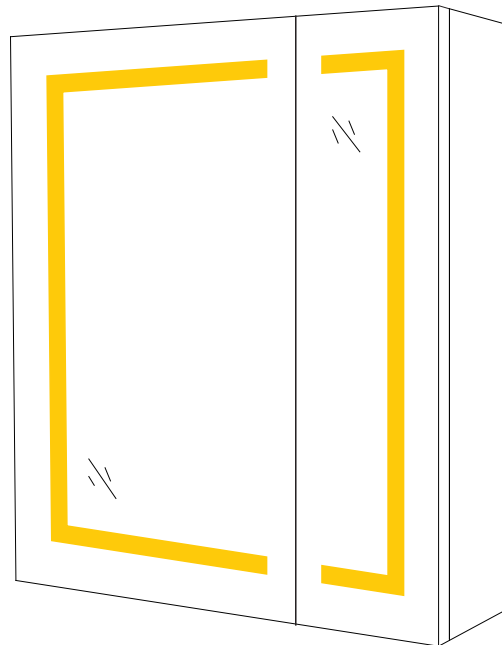


Installation Manual

BATHROOM MIRROR CABINET WITH LED LIGHTING



SIINGLE DOOR CABINET



DOUBLE DOOR CABINET



IMPORTANT SAFETY INSTRUCTIONS

*PLEASE READ ALL MANUAL INSTRUCTION CAREFULLY BEFORE INSTALLATION.

*INSTALLATION SHOULD BE CARRIED OUT BY A QUALIFIED ELECTRICIAN.

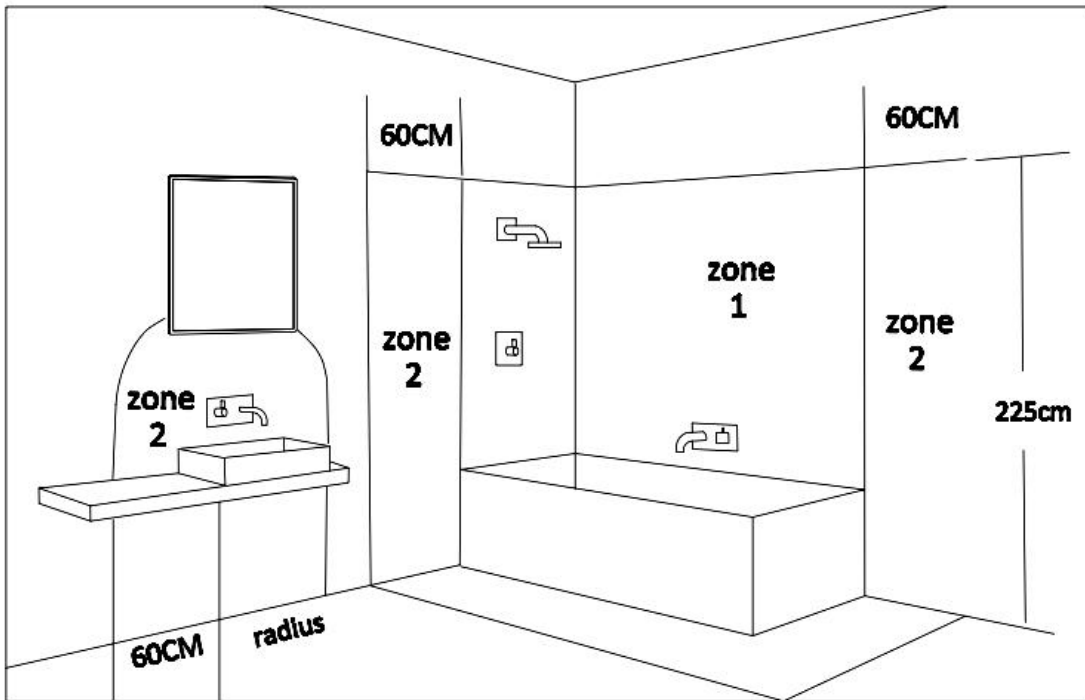
*PLEASE ENSURE THAT YOUR MAINS ELECTRICITY SUPPLY IS ISOLATED BEFORE COMMENCING INSTALLATION.

*PLEASE KEEP A COPY FOR FUTURE USE.

WARNING: TO PREVENT INJURY, THE MIRROR CABINET MUST BE INSTALLED IN ACCORDANCE WITH THESE INSTRUCTIONS. FAILURE TO DO SO COULD RESULT IN DEATH OR SERIOUS INJURY.

IMPORTANT FOR INSTALLATION IN BATHROOM

- ⌘ This product can be installed in bathroom zone 2 (as defined by IEE Wiring Regulations) and beyond. See bathroom diagram below:



OUTSIDE ZONES

- ⌘ This product is for in door use only.
- ⌘ This product requires an earth connection.
- ⌘ This product is Wall Mounted and must be fixed on a solid wall, composite panel or Timber frame.
- ⌘ Ensure connection are turned off at the consumer unit or fuse board before installing or carrying out any maintenance.
- ⌘ When working at height, please use a suitable platform to work from.
- ⌘ Ensure that the fixing location is able to take the weight of the complete fitting.
- ⌘ Wear suitable eye protection when drilling. Be careful when using power tools near water.
- ⌘ For new installations, check for any electrical cables or pipe work (gas/water) in the vicinity of the intended mounting point before proceeding with the installation.
- ⌘ For ease of installation, the assistance of one or two additional persons is recommended.
- ⌘ Irregularities in wall surface may cause distortion of product body when mounted. Place shims between product body and wall if necessary.

IMPORTANT FOR MIRROR:

- ⌘ DO NOT strike the mirror glass with hard or pointed items.
- ⌘ It is recommended that the product is cleaned with a soft, dry, not abrasive cloth.
- ⌘ DO NOT use cleaning agents or abrasive materials on any type of finished surface or exposed edges of the mirror.
- ⌘ DO NOT use cleaners that contain solutions of ammonia, vinegar, or chlorine.
- ⌘ DO NOT allow moisture to come into contact with the electrical components.
- ⌘ DO NOT use powdered cleansers or steel wool.
- ⌘ Apply cleaner to soft cloth and wipe mirror. Dry mirror thoroughly.
- ⌘ Keep mirror and the chassis or cabinet dry and clean.
- ⌘ A well ventilated bathroom is important.

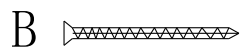
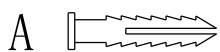
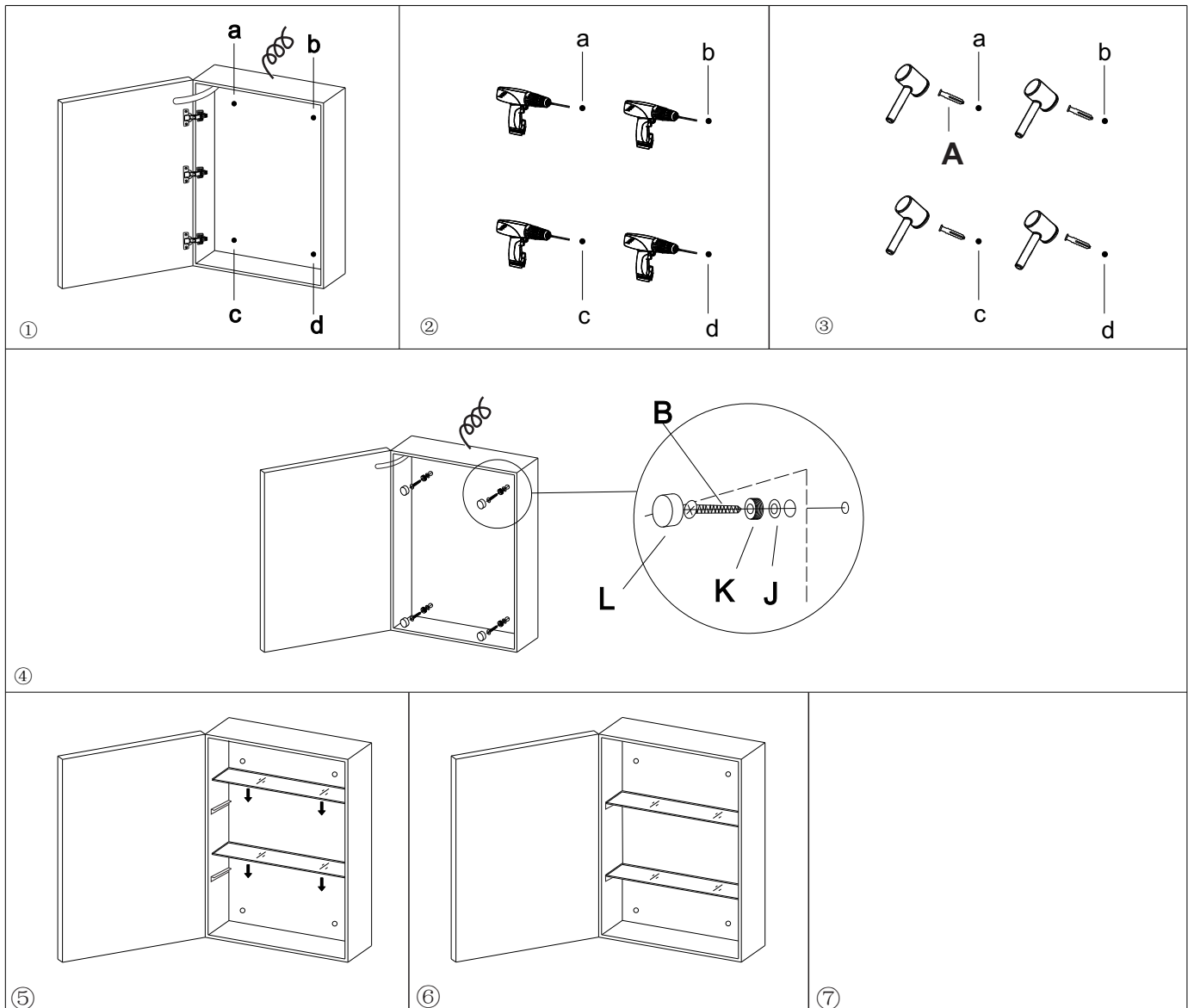
This Bathroom Mirror Cabinet is not available in the following situations:

- ⌘ Incorrect use.
- ⌘ Incorrect installation or installation.
- ⌘ Tampering
- ⌘ Incorrect maintenance or lack of maintenance.
- ⌘ Use of unsuitable cleaning products or use of cleaning products in the wrong way.
- ⌘ For chemical, electrical or electrochemical damage.
- ⌘ Incorrect power connection or using wrong voltage.
- ⌘ Damage by hard or pointed objects.

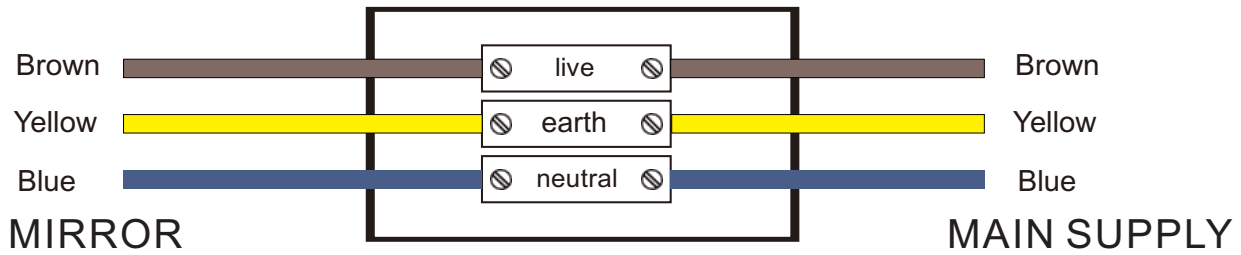
To prevent possible harm to the environment or human health from uncontrolled waste disposal, please separate any such product from other waste types and recycle it responsibly at your local facilities. Please check with your local authority, recycling center or retailer for recycling advice. Thank you.


Installation Guidelines


- Fig①: Raise the cabinet, mark the a/b/c/d mounting holes on the wall.
 Fig②: Drill holes in marked places.
 Fig③: Hammer the "A" into the drilled hole.
 Fig④: Hold the mirror cabinet and install mounting hardware "B" "J" "K", and "L" as shown in the illustration.
 Fig⑤: Insert the glass shelf(s).



Wiring diagram for input terminal



The  switch controls the light and the defogger ON/OFF, Keep Pressing the On/Off switch 2 Seconds to Adjust the Brightness from 10% to 100% ,Short Press the On/Off Switch, the Lighting Color Temperature can be adjust to either 3000K/4500K /6400K, Brightness Memory: When the Light is Turned on it will Remain the Last Turn-Off Brightness Level.

- There is a white shaver socket inside the mirror cabinet, and with a sign on its cover. 
- The maximum power of electrical appliances using this shaver socket **cannot exceed 18 watts.**

Circuit Diagram

