

# ASSEMBLY INSTRUCTIONS

## DRAWER CONSOLE

### TOOLS REQUIRED:

Allen Wrench (Provided, Part # D)

### BEFORE YOU START:

1. Check the parts against the parts list to make sure all items are present.
2. Assemble your furniture on a soft, flat surface to avoid scratching the finish.
3. **CAUTION:** Do not over tighten screws, nuts or bolts during assembly.
4. Your furniture may require occasional tightening.

### INSTRUCTIONS:

1. Remove the drawer by extending drawers to expose levers in track. Release by pushing one up and the other down.
2. Attach all six support legs to Top panel and Bottom panel using Bolt (A), Lock Washer (B), Flat Washer (C) and tighten with Wrench (D). As shown in Figure 1.
3. Tighten all bolts and turn console upright, and insert drawers.
4. Replace drawer by sliding it back into the track.

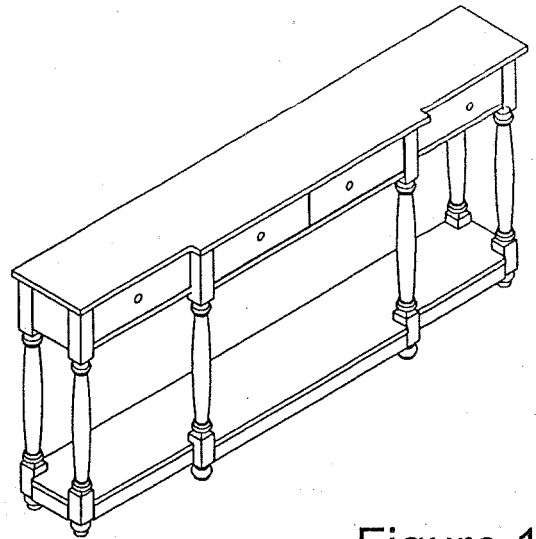


Figure 1

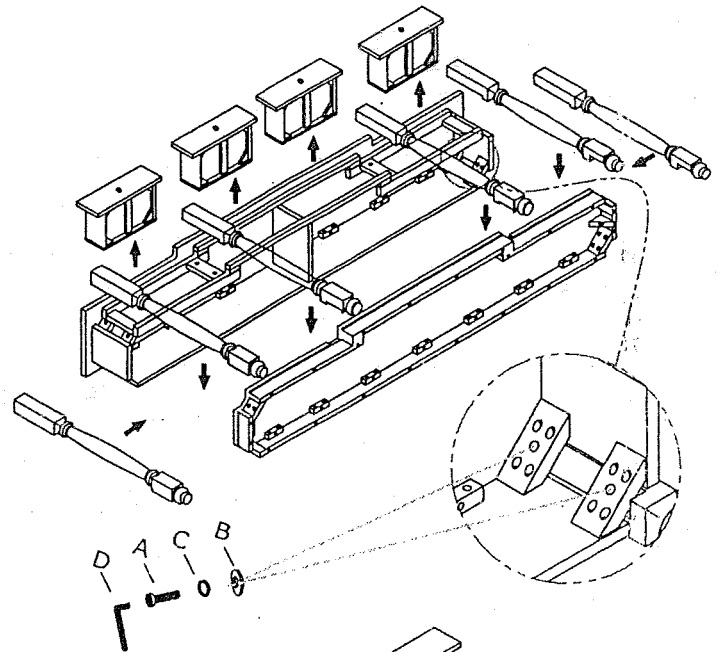
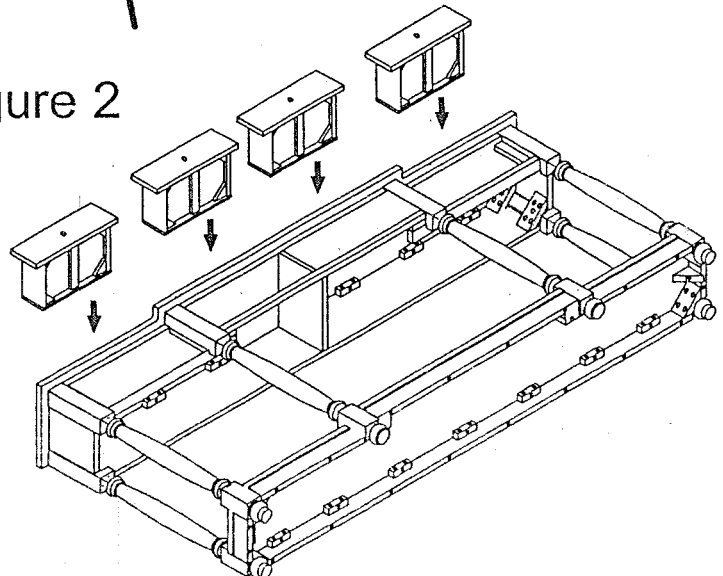
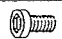





Figure 2



HARDWARE LIST			
NO.	Drawing	Description	QTY
A		Allen Bolt ( $\phi 5/16 \times 2-1/4$ ")	24 pcs
B		5/16" Lock Washer	24 pcs
C		5/16" $\times$ 3/4" Flat Washer	24 pcs
D		Wrench 5mm	1 pc