

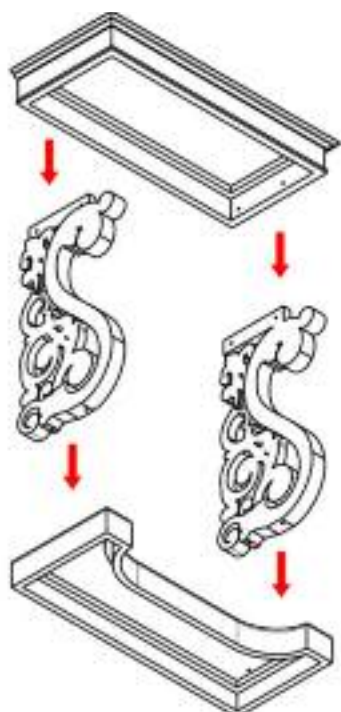
design TOSCANO®

INSTRUCTIONS FOR YOUR PRODUCT

AF-57732
Serpentine Carved Console Table

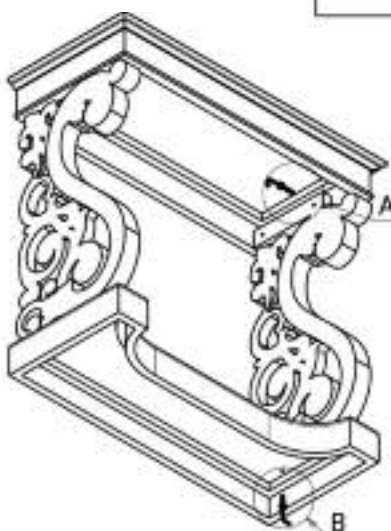
Thank you for your recent purchase of this Design Toscano hand-crafted piece of furniture art. We have taken great care to create this piece especially for you. Please review these instructions and assemble this piece with care.

Step 1



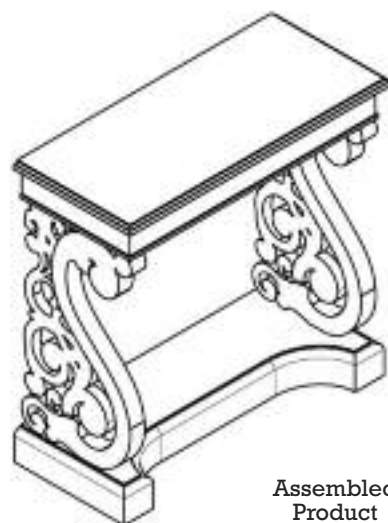
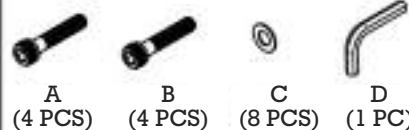
Repeat 4 times.

Step 2



Repeat 4 times.

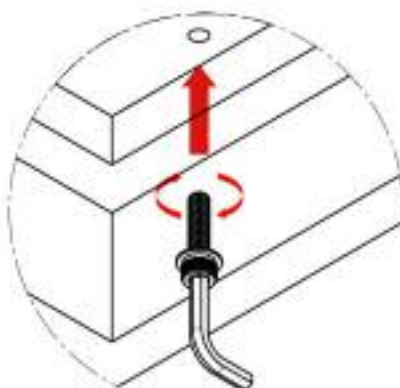
Parts



Assembled
Product



Detail A



Detail B

©Copyright 2021, Design Toscano, Inc.

1.800.525.0733
DESIGNTOSCANO.COM

**THANK YOU
FOR YOUR PURCHASE**