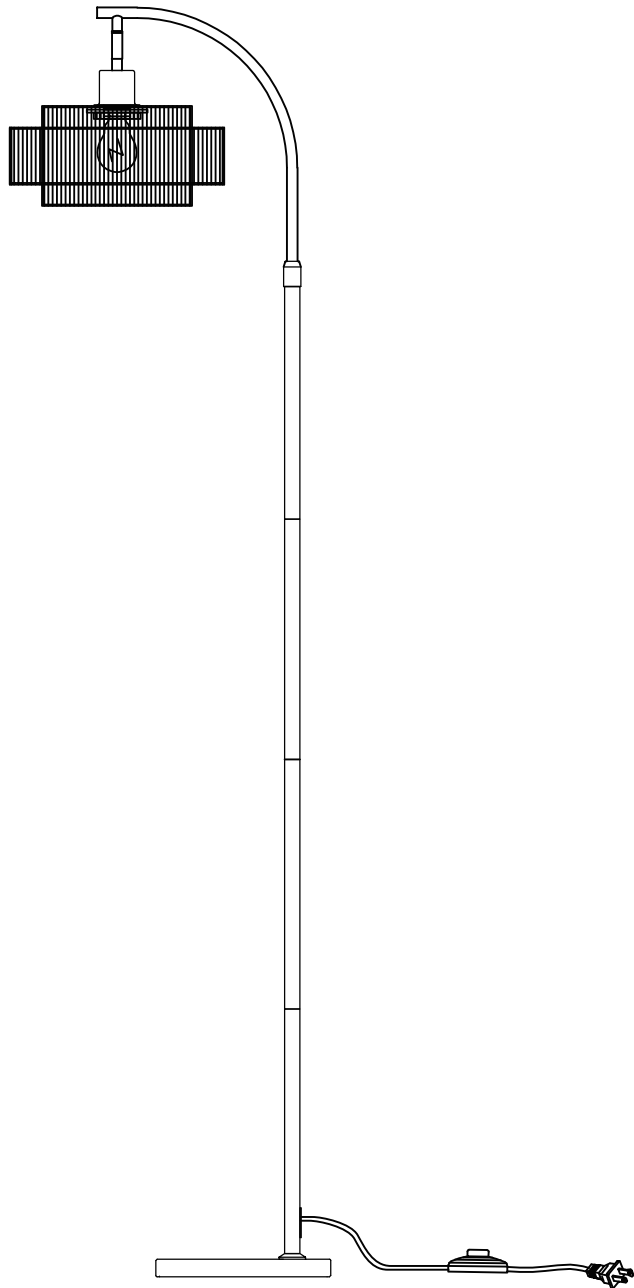
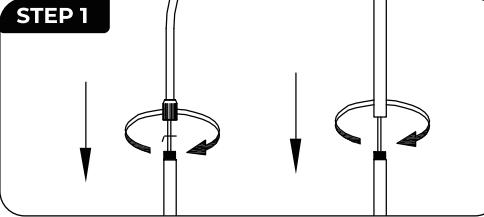


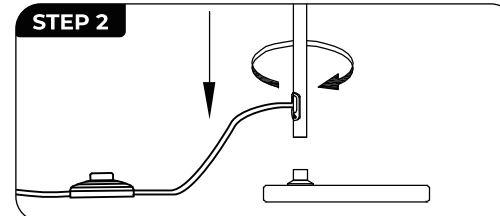
FLOOR LAMP



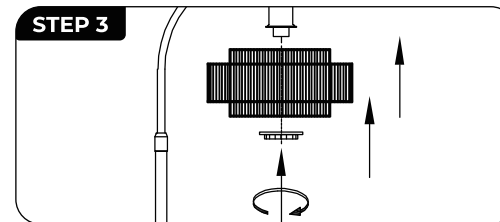
INSTALLATION STEPS



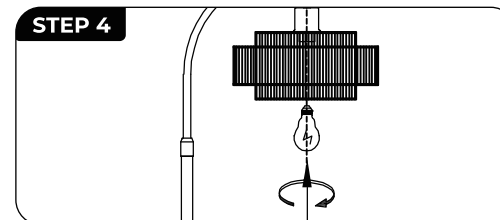
Tighten the light poles together



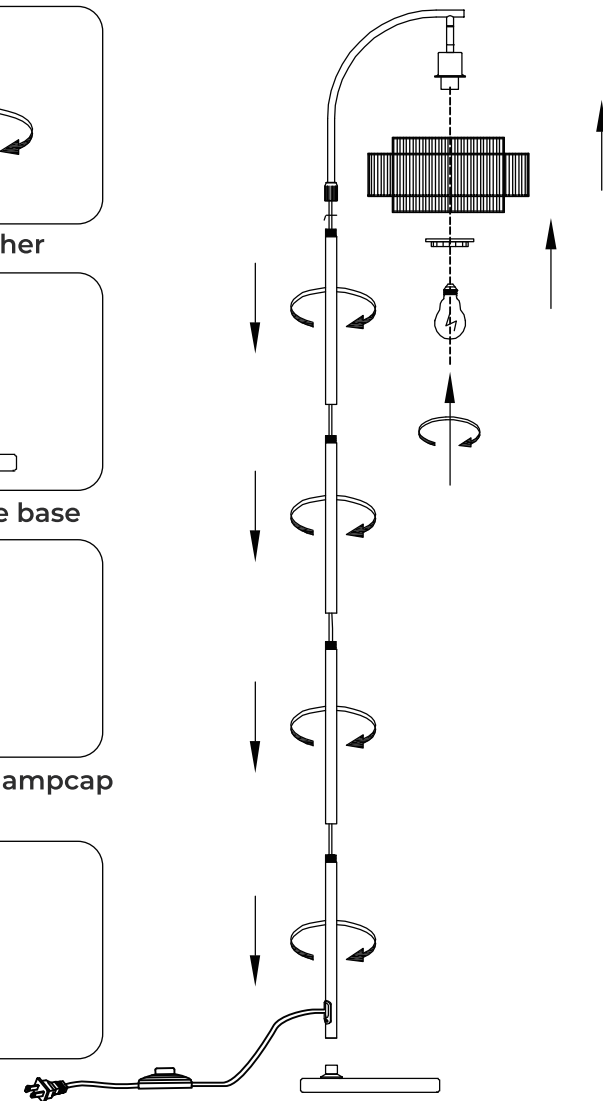
Connect the lamp pole to the base



Lock both lampshades with lampcap rings



Installing bulb light source



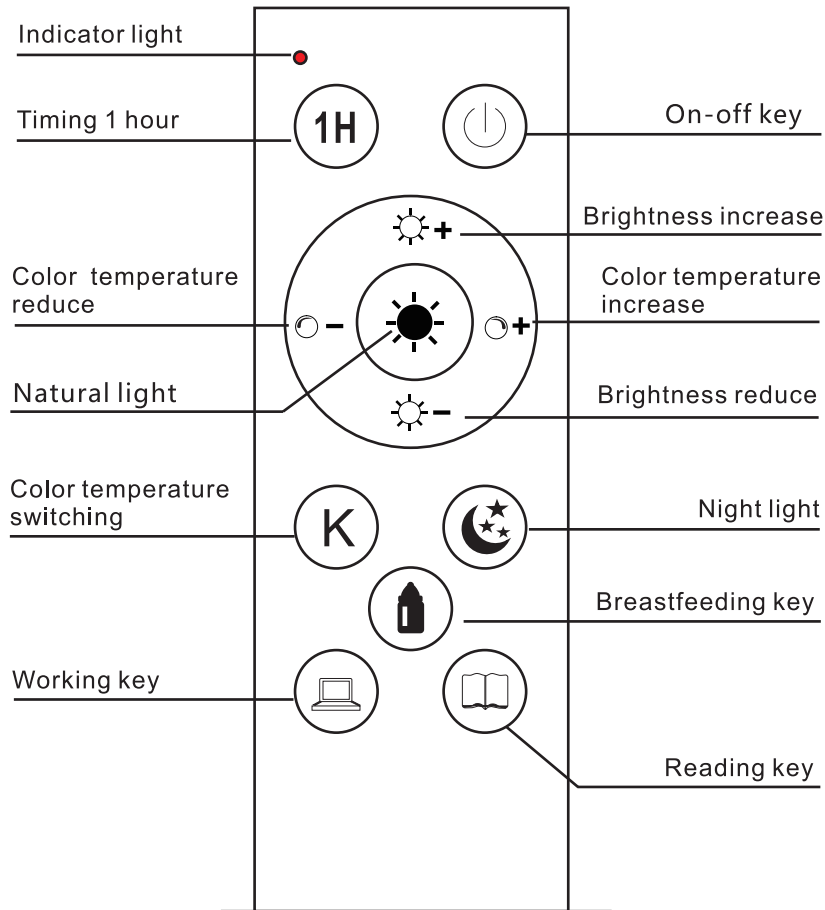
WARNING

- Do not use the power supply beyond the specified range (110V,60HZ)
- Should avoid scratching the surface and wires of the lamp during installation
- Do not install the lamp outdoors.
- The lamp should not be close to corrosive chemical objects or gases . It should not be washed with water It can only be wiped with a clean soft cloth

PRODUCT INTRODUCTION


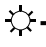
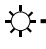
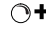
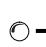





Welcome to use this product, we can use the remote to wirelessly control our company's light bulb, can adjust the brightness of the light bulb, color temperature, timing, remote equipped with a variety of light adjustment shortcut keys, a variety of life required by the light mode, let you experience the fun of smart light bulbs, as well as the convenience of life!

PRODUCT BUTTON DISTRIBUTION



Warning: Please install the battery according to the positive and negative electrode, do not install the reverse.

DETAILED EXPLANATION OF PRODUCT KEY CONNECTION FUNCTION

-  On-off key: long press pairing, short press the light on or light off.
-  Timing key: short press the timer for 1 hour, long press to cancel timing.
-  Increase brightness key: long press to increase brightness quickly, short press to increase brightness slowly.
-  Reduce brightness key: long press to reduce brightness quickly, short press to reduce brightness slowly.
-  Increase color temperature key: long press to increase color temperature quickly, short press to increase color temperature slowly.
-  Reduce color temperature key: long press to reduce color temperature quickly, short press to reduce color temperature slowly.
-  Natural light mode key: Press the key to feel the comfort of natural light.
-  Color temperature conversion key: short press to convert three color temperature color, warm, natural.
-  Night light key: short press to enter night light mode.
-  Breastfeeding mode key: suitable for night feeding.
-  Working key: suitable for working
-  Reading key: Suitable for reading.

PAIRING METHOD

Step 1:Screw the bulb clockwise into the socket cup and turn on the lamp switch.

Step 2: Long press the“Ⓞ”in the remote control within 10 seconds, when the bulb flashes three times,it means the pairing completed.

Note:Must turn off the "lamp switch" firstly once pairing/unpairing,and turn on the lamp switch.(NOT"remote control switch")

UNPAIR METHOD

Step 1:Screw the bulb clockwise into the socket cup and turn on the lamp switch.

Step 2: Long press the“Ⓞ”in the remote control six times quickly with in 10 seconds,when the bulb flashes six times,it means the unpairing completed.

Note:Must turn off the "lamp switch" firstly once pairing/unpairing,and turn on the lamp switch.(NOT"remote control switch")

BULB PARAMETERS

Product Name	REMOTE BULB	Control methods	Remote Control
Lamp body	PC+aluminum	Snail mouth	E26/E27
Power	9W/12W	Light mode	CCT
Voltage	AC100V-245V	Color temperature	3000K-6500K

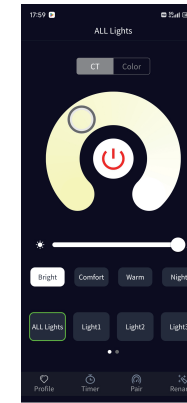
MATTERS NEEDING ATTENTION

- 1.Remote control requires the installation of two AAA batteries.
- 2.Before use, check that the light bulb and remote control are paired.
- 3.The remote control and light bulb need to be the same brand.
- 4.Remote control not in use for along time, please remove the battery.
- 5.In the case of no shelter, the maximum remote control range of the remote controlis 20 meters

MATTERS NEEDING ATTENTION

- 1.Ensure that the light bulb is powered on.
- 2.Ensure that the light bulb and remote contro are paired.
- 3.Ensure that the same brand of light bulb and remotecontrol are used.
- 4.Ensure that the light bulb is within the controlable range of the remote control

MOBILE APP CONTROL METHOD



1.Mobile App Download Method

2.The app light bulb pairing method

Step 1:The first open the bluetooth of phone;

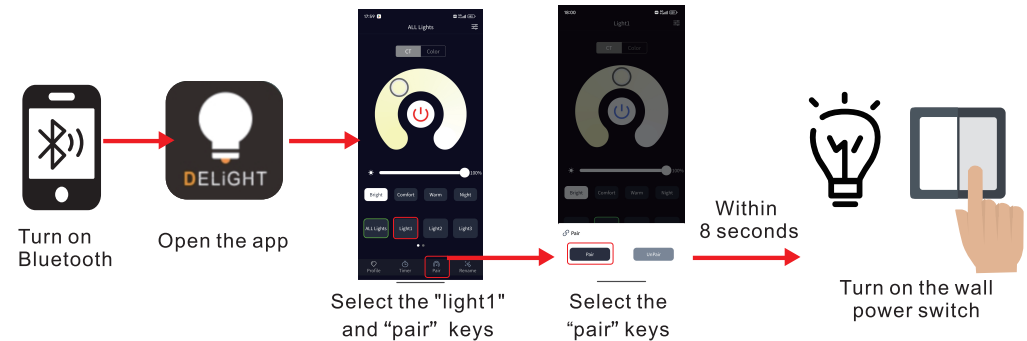
Step2:open the"hxlight"app;

Step3:Select one of the buttons of"Lights 1" through "Light7"

Step4:Click the Bluetooth button below;

Step5 :Open the bulb wall switch in 8 seconds.

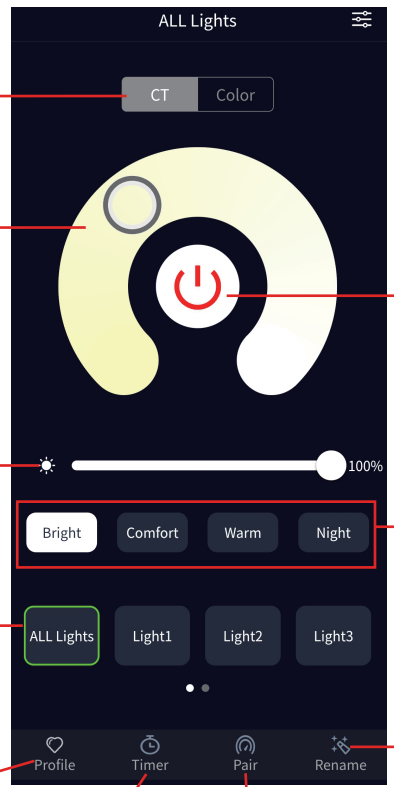
The light bulb flashes three times, indicating successful pairing



Note:Please don't first open the app and then turn on Bluetooth. If you open the app and then turn on Bluetooth, please exit the app. Please exit the app and open it again and then turn on the app again.

INTRODUCTION TO APPINTERFACE

a.CCT



Select the CCT interface

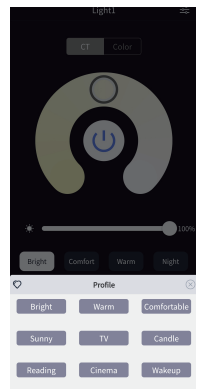
Regulating color temperature

ON/OFF

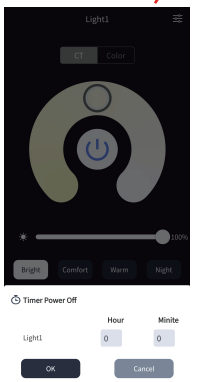
Regulating brightness

Multiple lighting modes

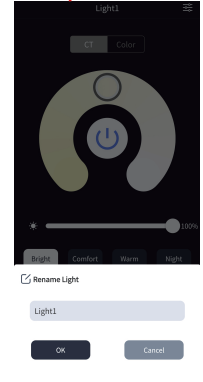
7 light groups (Can be paired with 7 different light groups of bulbs)



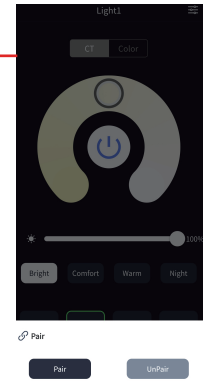
9 light scenarios



Time off light



Pairing and UnPair



Lighting group renamed