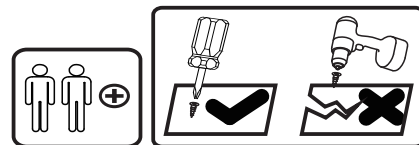
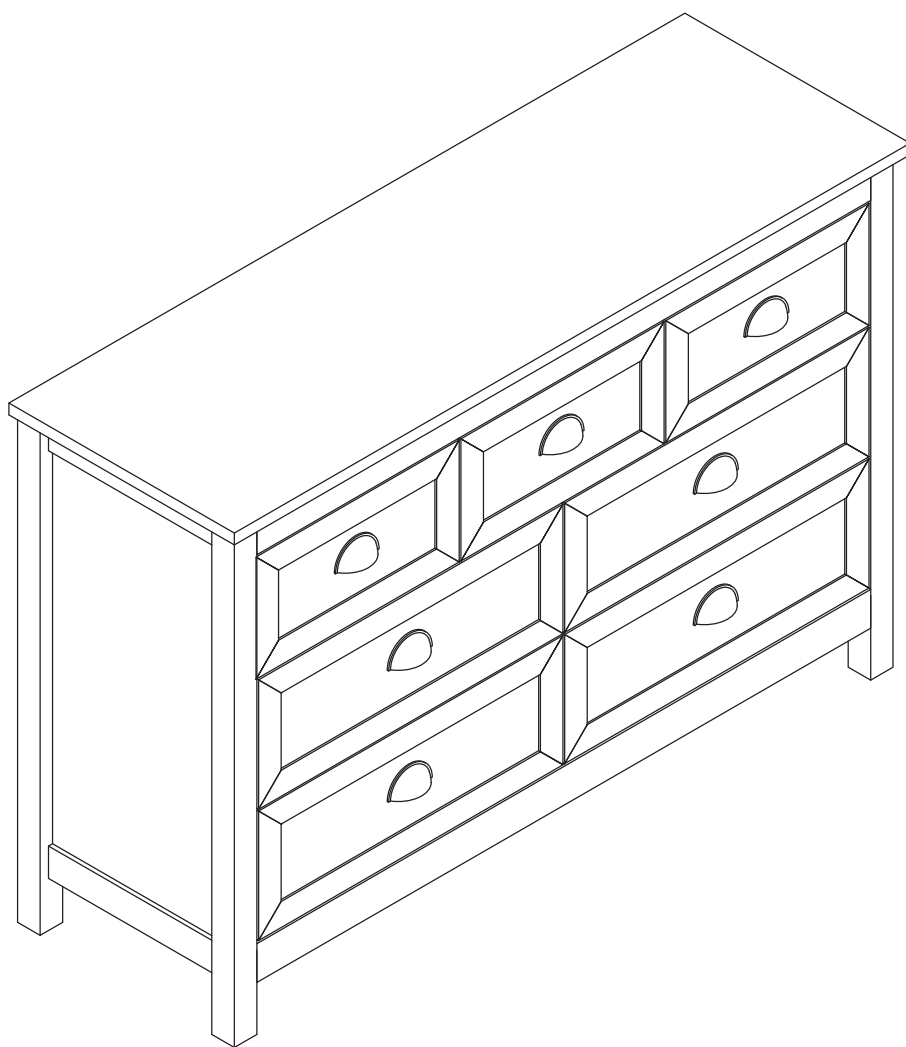



ASSEMBLY INSTRUCTIONS

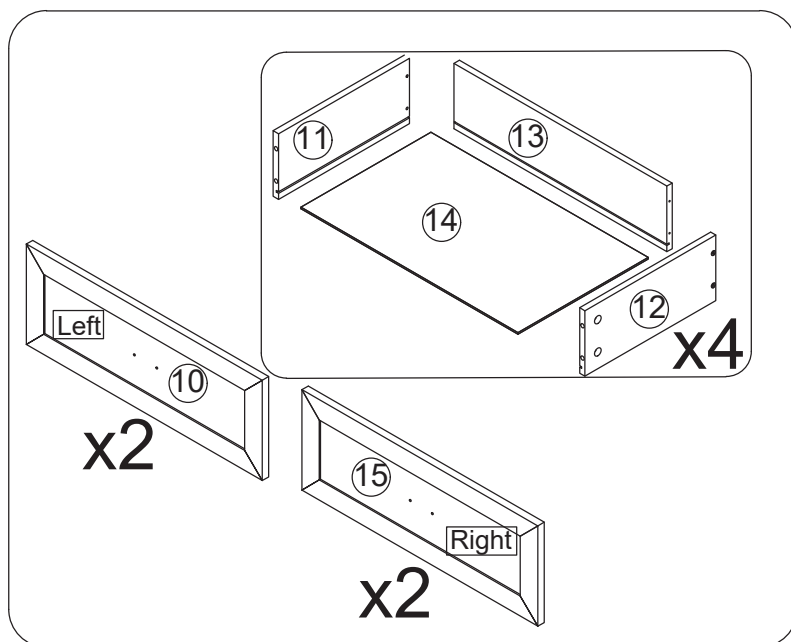
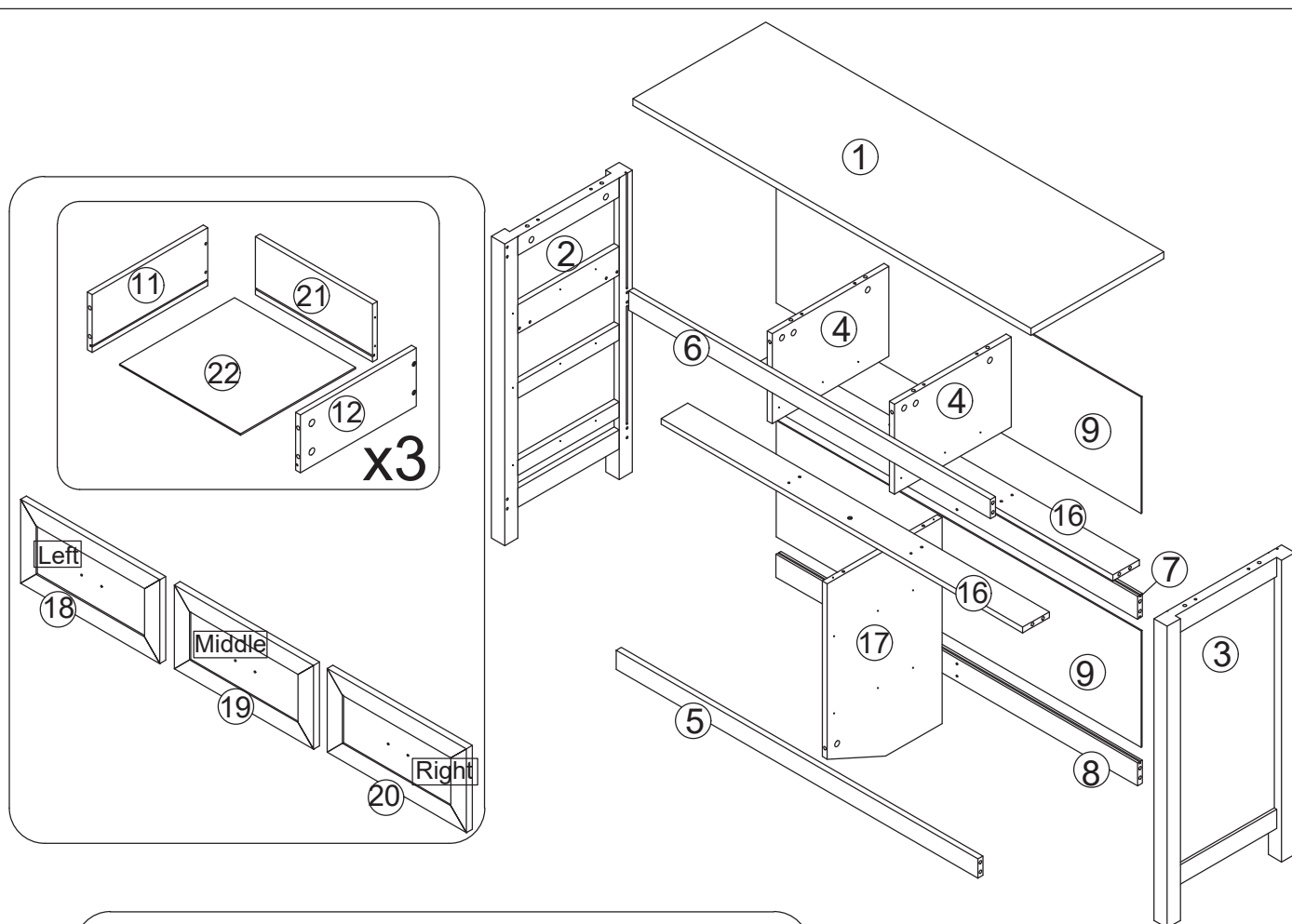


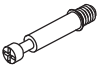

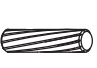
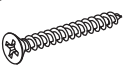




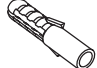
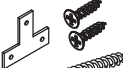
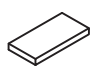





Tools Recommended

IMPORTANT NOTICE

- This product contains small components, please ensure that they are kept away from small children.
- THIS INSTRUCTIONS CONTAINS IMPORTANT SAFETY INFORMATION.
PLEASE READ BEFORE ASSEMBLY AND KEEP FOR FUTURE REFERENCE.
- Read each step carefully. It is very important that each step of instruction is performed in the correct order. If these steps are not followed in sequence, assembly difficulties will occur.
- Make sure all parts are included. Most parts are labelled or stamped on the raw edge.
- Work in spacious area, preferably on a carpet, near the place the unit will be used.
- Do not use power tools to assemble your furniture. Power tools may strip or damage the parts.
- Move your new furniture carefully, with two people lift and carry the unit to it's new location.
- Never push, drag or pull your furniture (especially on carpet)

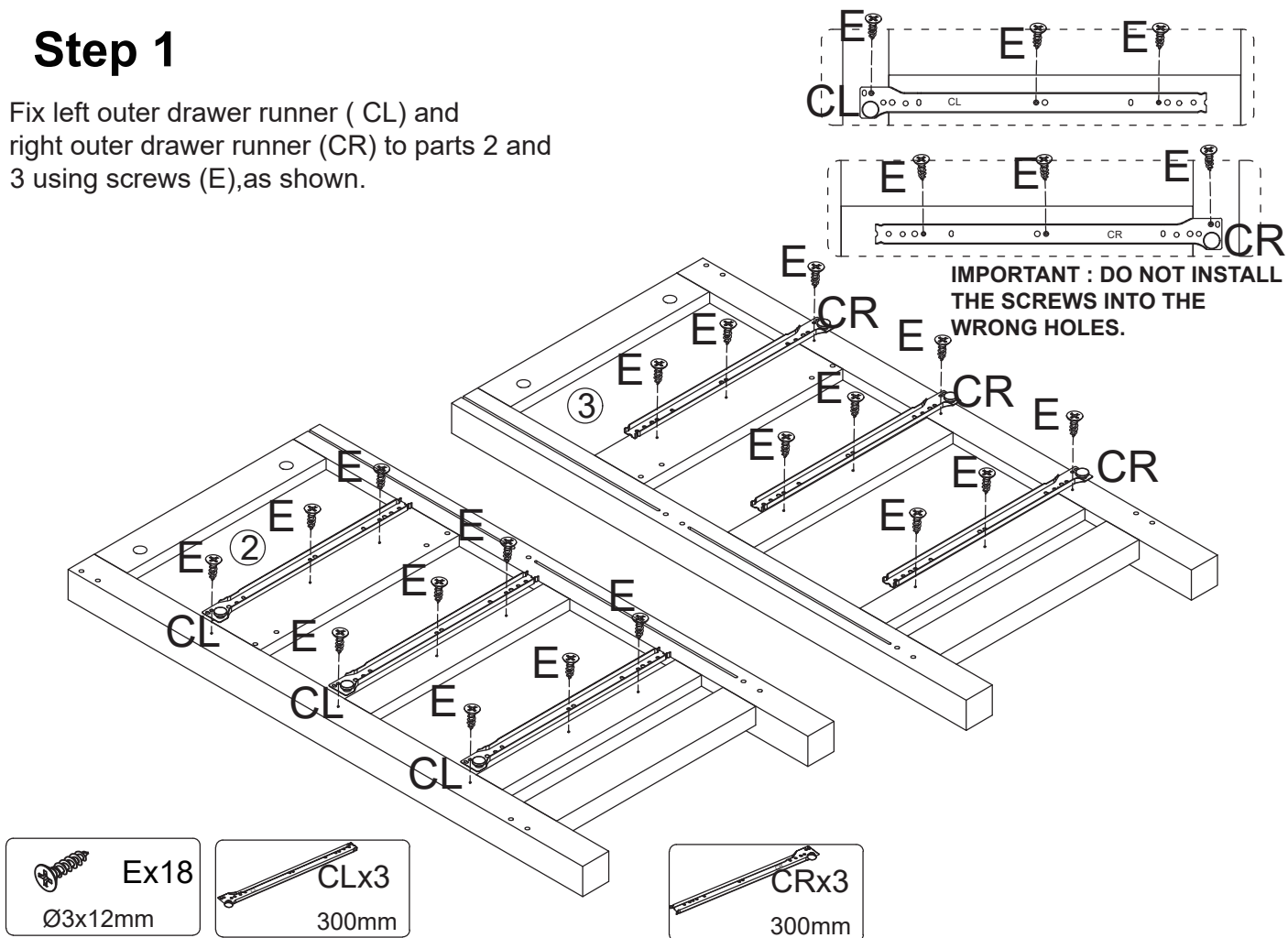
 WARNING	
	<p>Children have died from furniture tipover. To reduce the risk of furniture tipover:</p> <ul style="list-style-type: none">• ALWAYS install tipover restraint provided.• NEVER put a TV on this product.• NEVER allow children to stand, climb or hang on drawers, doors, or shelves.• NEVER open more than one drawer at a time.• Place heaviest items in the lowest drawers.
	



 Ax59 Ø6x35mm	 Bx59 Ø15x10mm	 Cx18 Ø6x30mm	 Dx38 Ø4x35mm	 Ex84 Ø3x12mm	 Fx14 Ø4x16mm
 Gx7	 Hx10	 Ix2	 Jx2	 Kx1 30x15x3mm	 Lx4 Ø30x3mm
 CLx7 300mm	 CRx7 300mm	 DLx7 300mm	 DRx7 300mm		

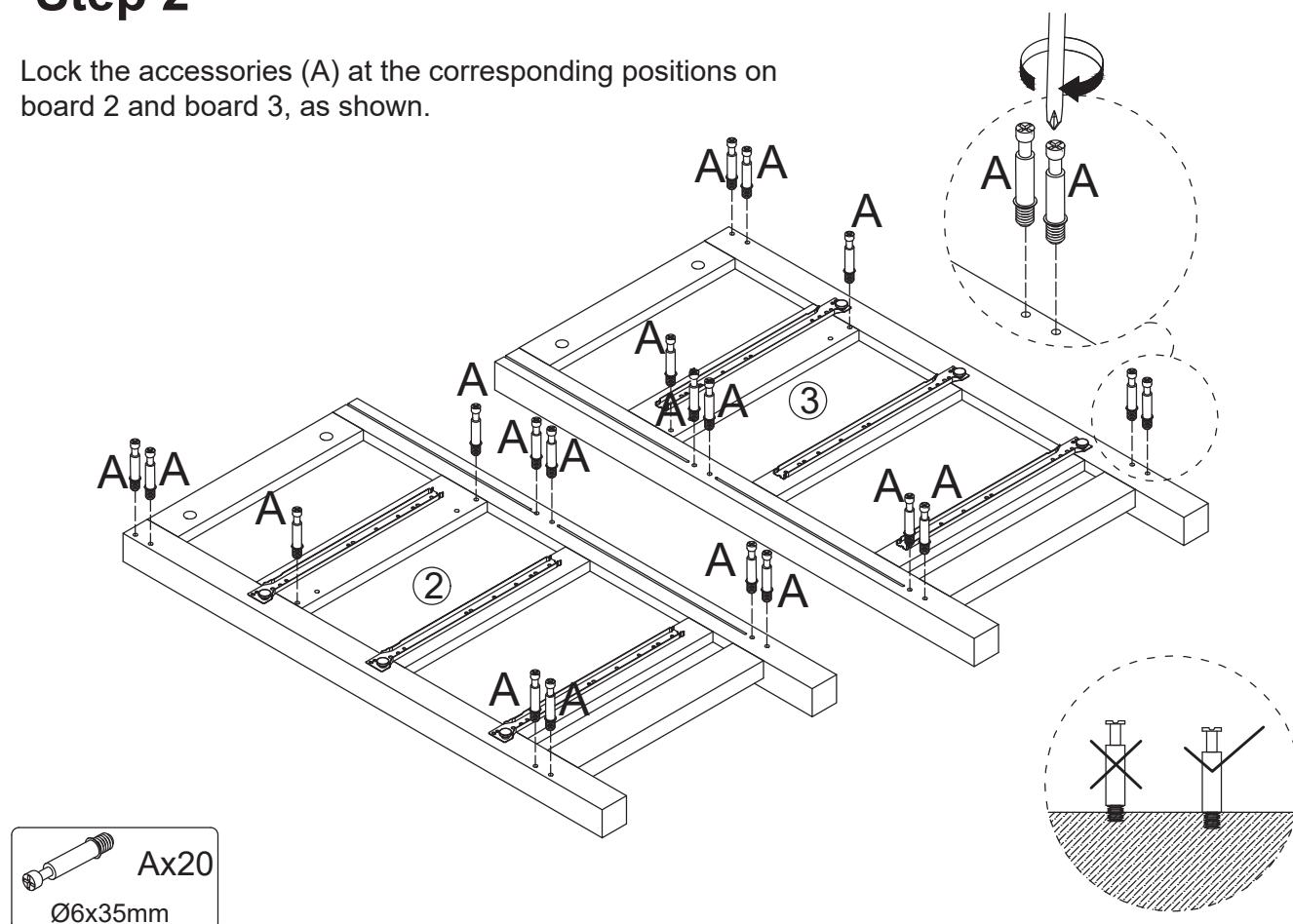
Step 1

Fix left outer drawer runner (CL) and right outer drawer runner (CR) to parts 2 and 3 using screws (E), as shown.



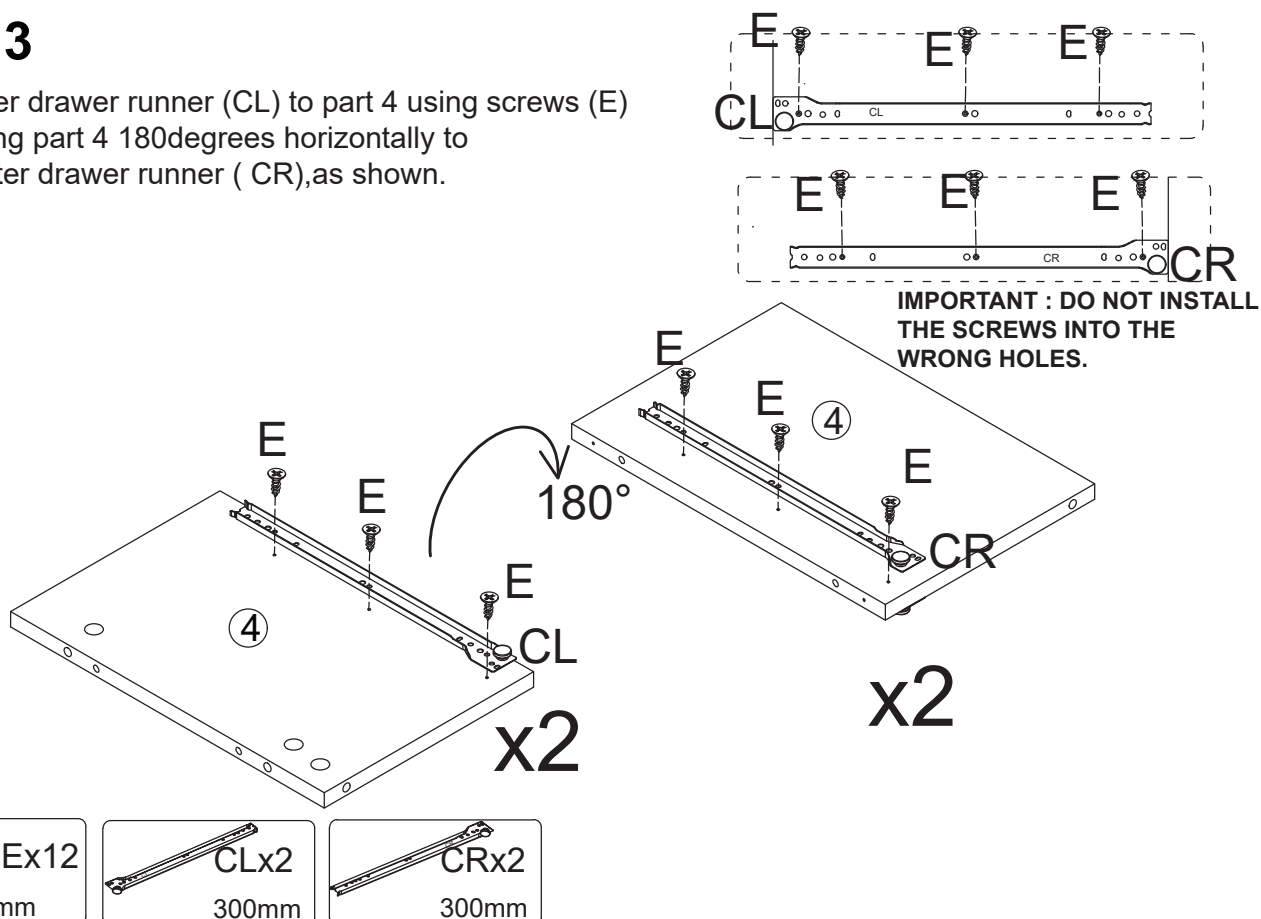
Step 2

Lock the accessories (A) at the corresponding positions on board 2 and board 3, as shown.



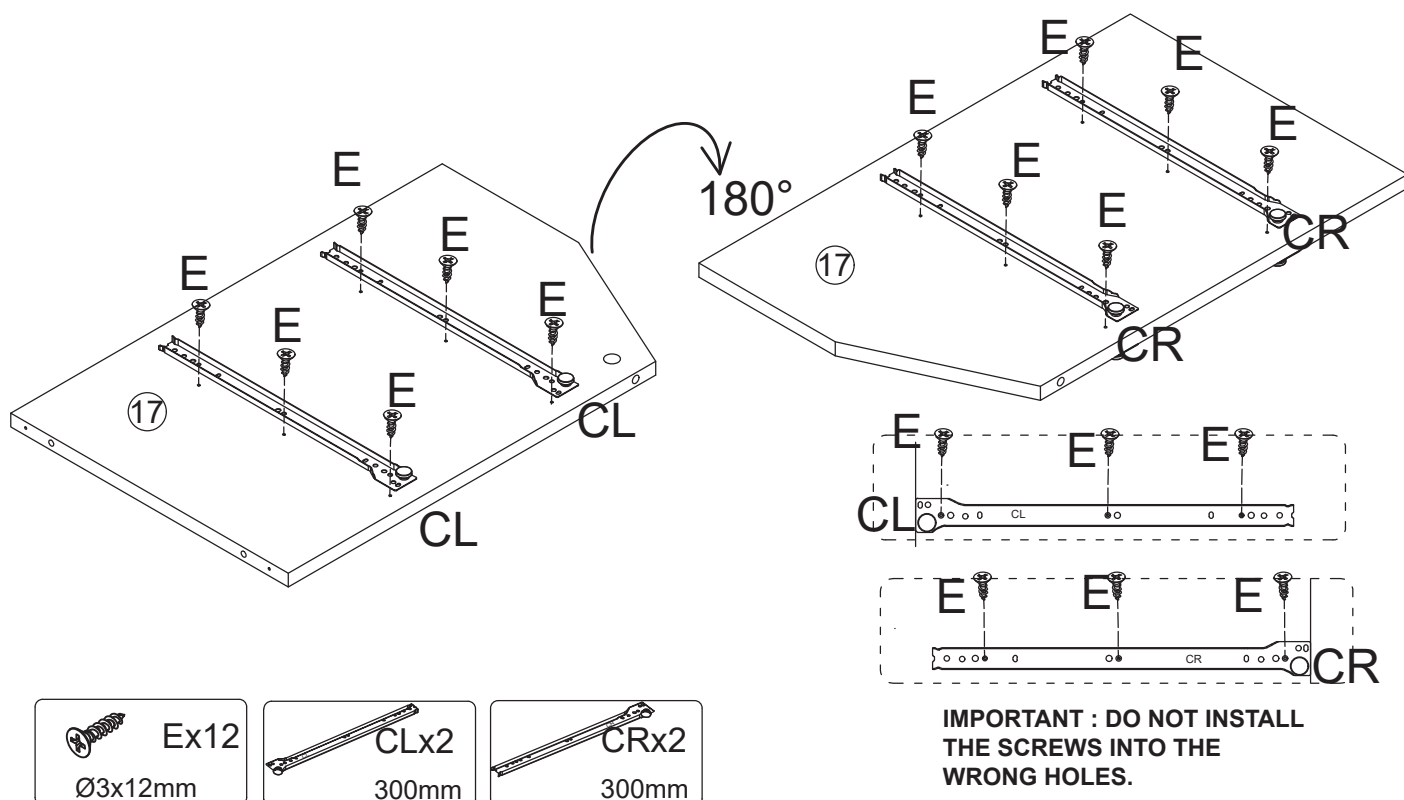
Step 3

Fix left outer drawer runner (CL) to part 4 using screws (E), then flipping part 4 180degrees horizontally to fix right outer drawer runner (CR),as shown.



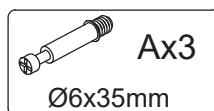
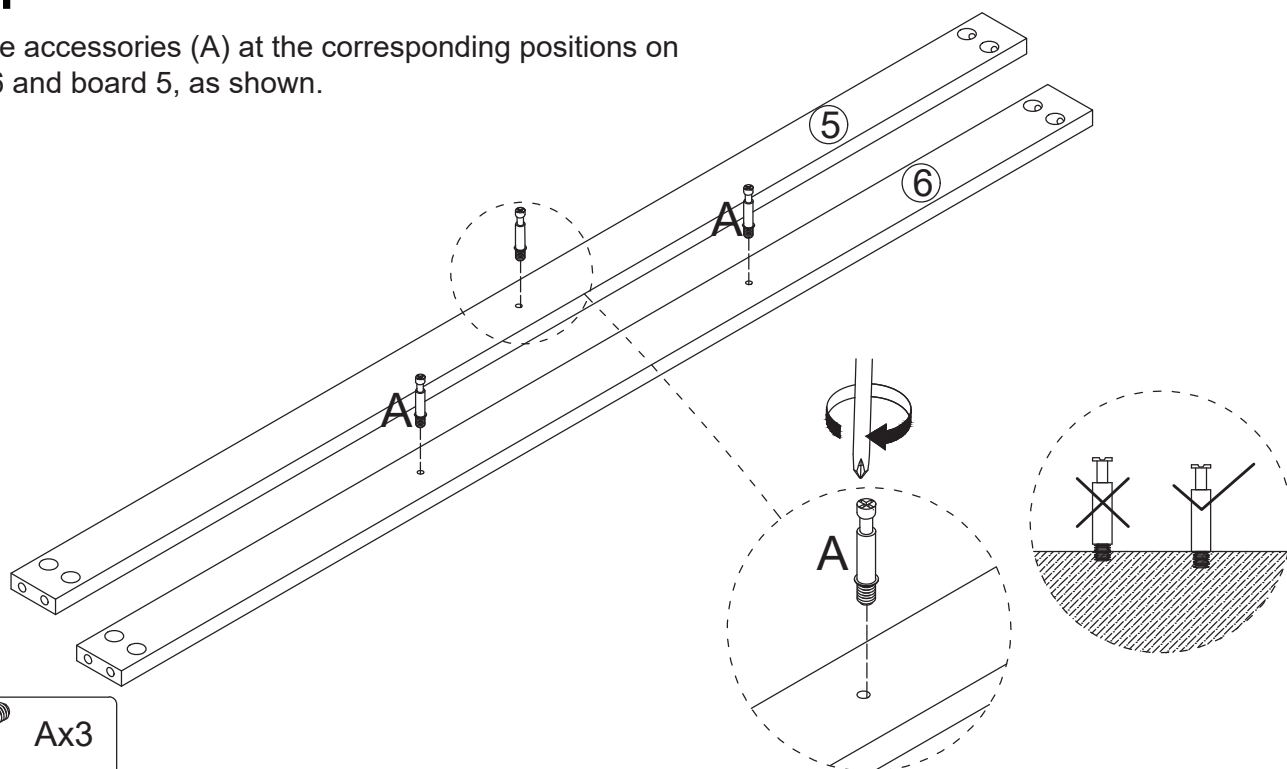
Step 4

Fix left outer drawer runner (CL) to part 17 using screws (E), then flipping part 17 180degrees horizontally to fix right outer drawer runner (CR),as shown.



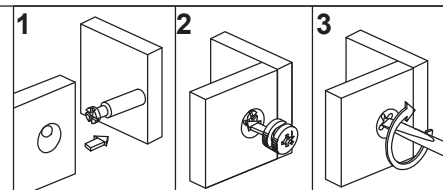
Step 5

Lock the accessories (A) at the corresponding positions on board 6 and board 5, as shown.

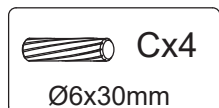
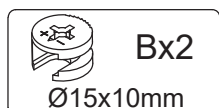
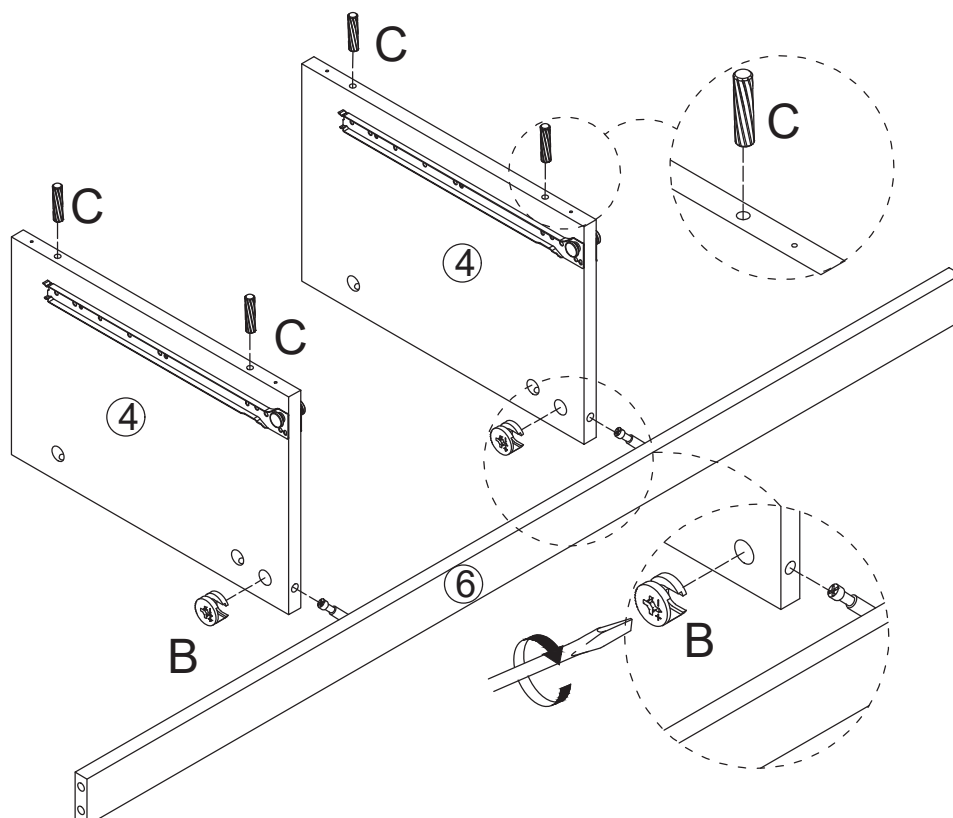


Step 6

Insert cam locks (B) into parts 4 and attach parts 6, as shown. Turn cam locks clockwise to tighten, as shown.

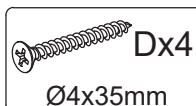
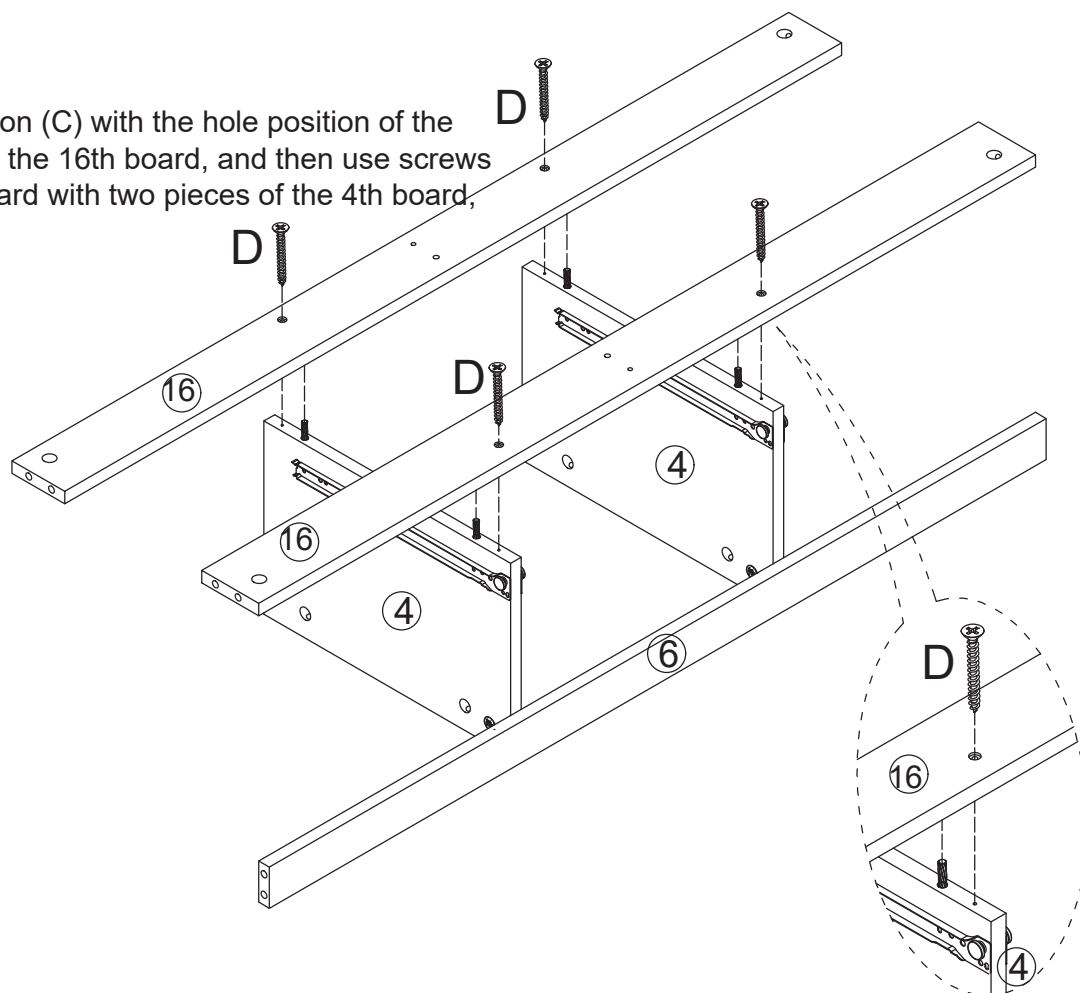


Insert the wooden tenon (C) into the corresponding position of plate 4, as shown.



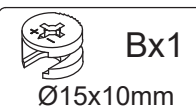
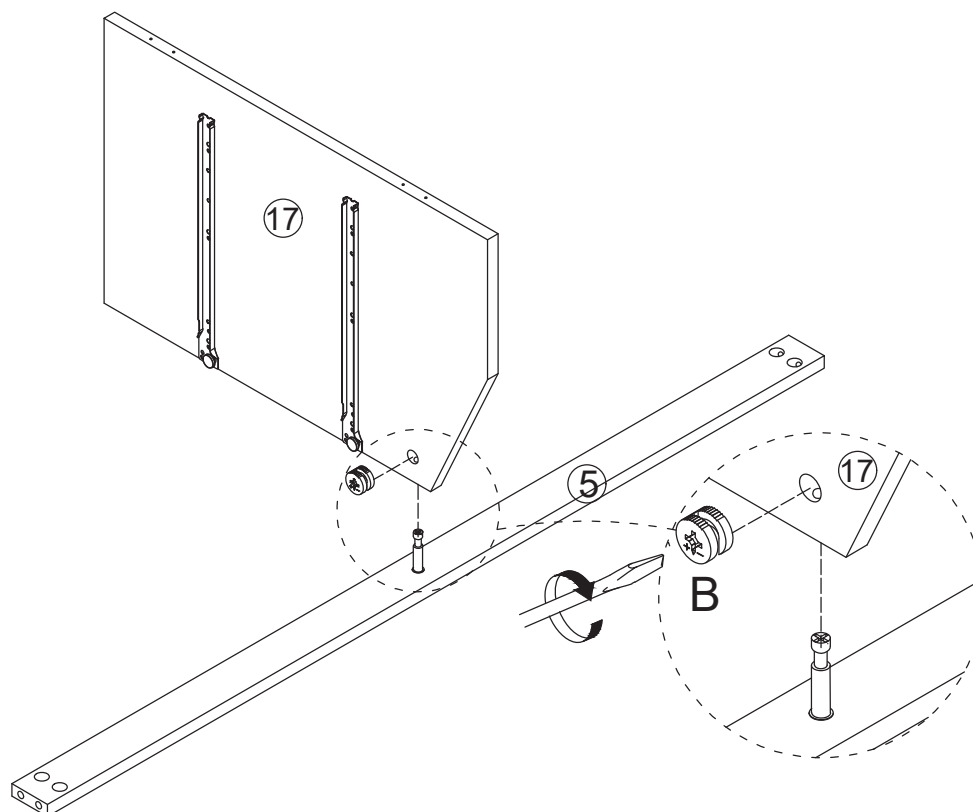
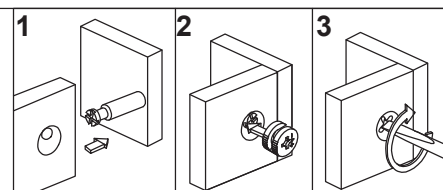
Step 7

Align the wooden tenon (C) with the hole position of the wooden tenon (C) on the 16th board, and then use screws (D) to lock the 8th board with two pieces of the 4th board, as shown.

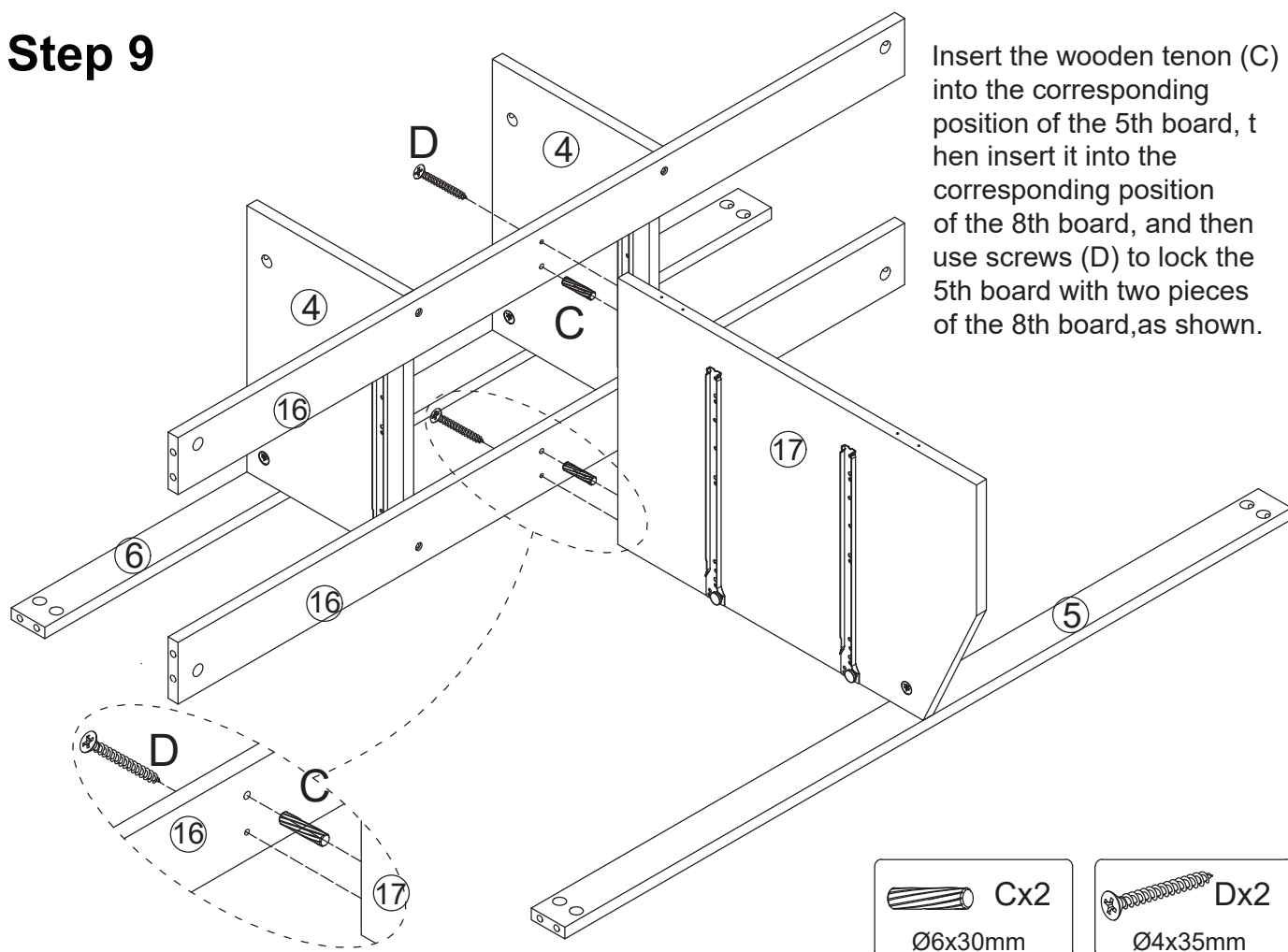


Step 8

Insert cam locks (B) into parts 17 and attach parts 5, as shown. Turn cam locks clockwise to tighten, as shown.



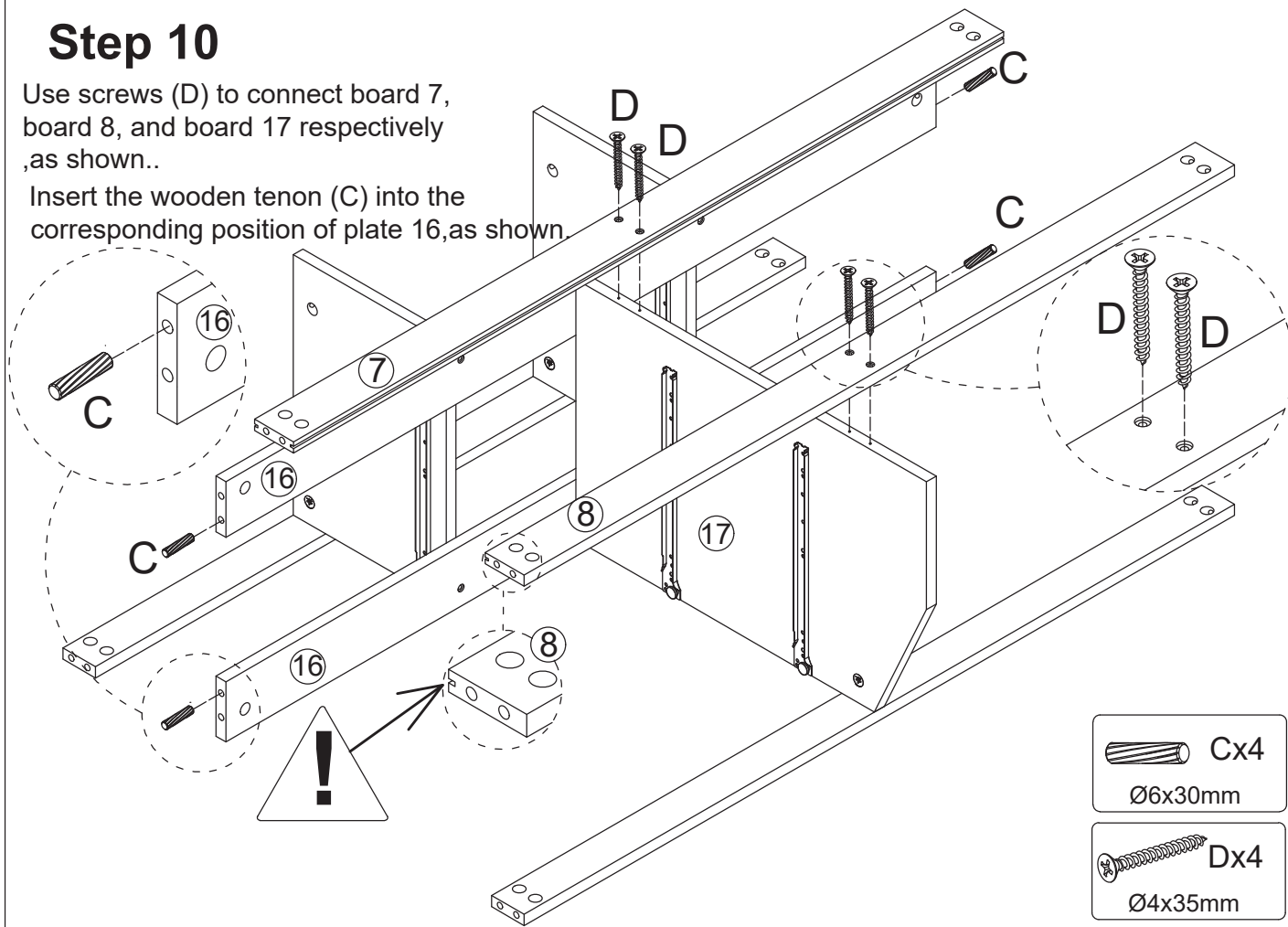
Step 9



Step 10

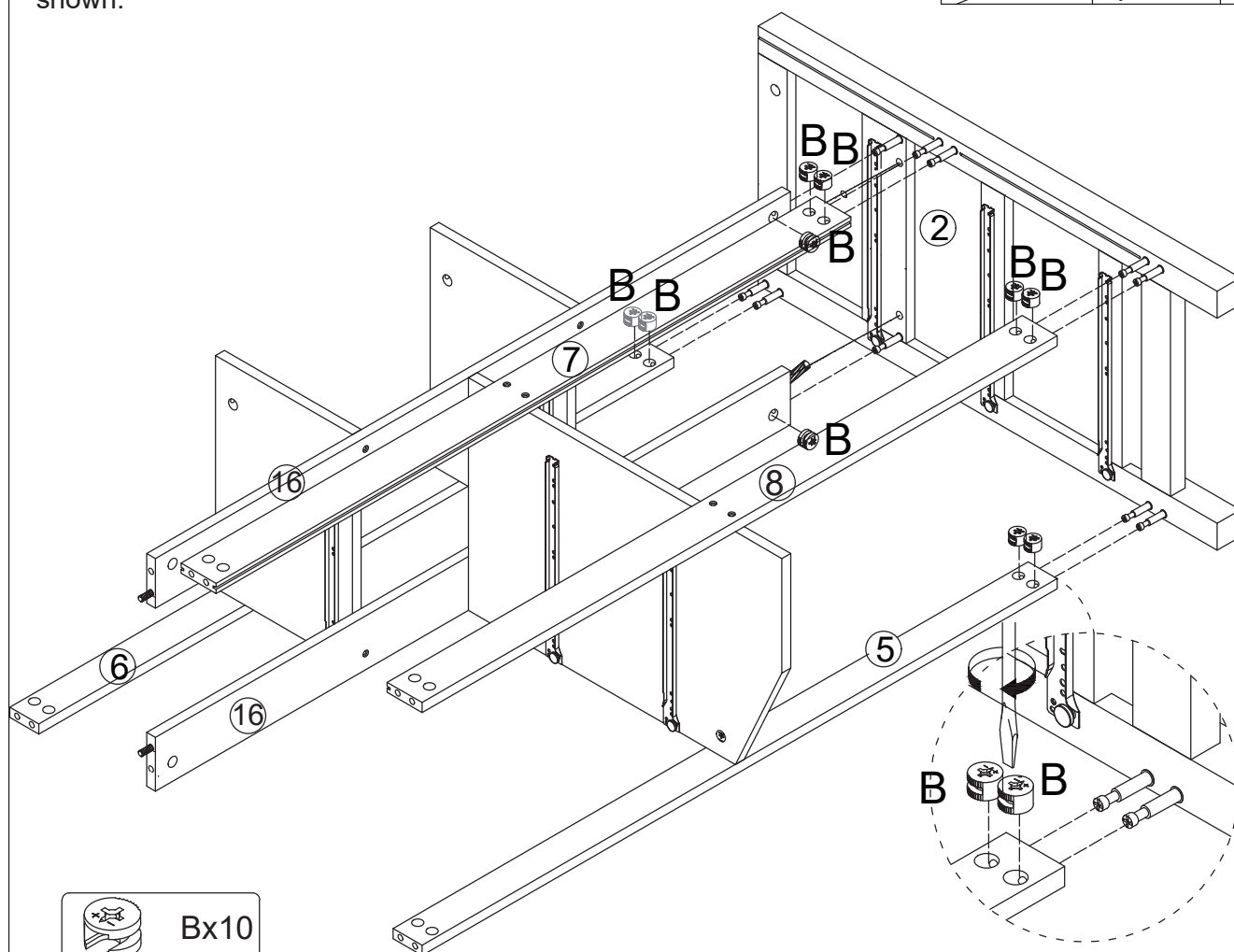
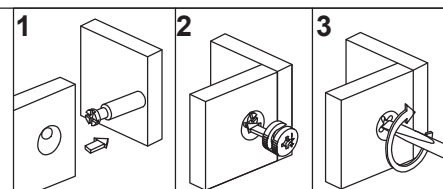
Use screws (D) to connect board 7, board 8, and board 17 respectively, as shown.

Insert the wooden tenon (C) into the corresponding position of plate 16, as shown.



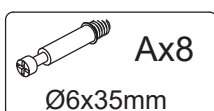
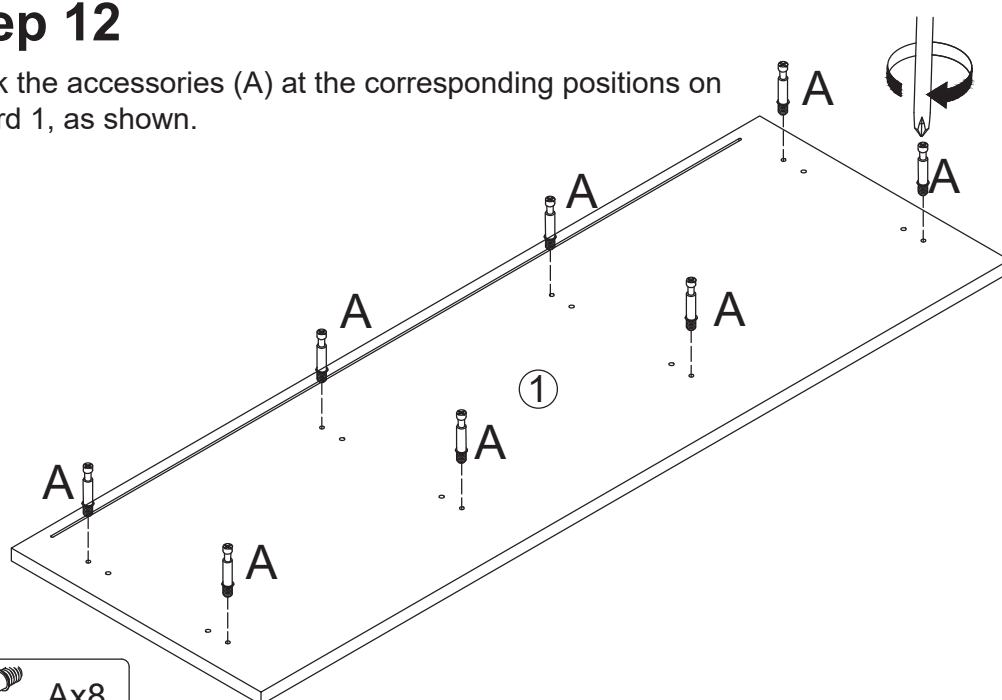
Step 11

Insert cam locks (B) into parts 5、6、7、8、16 and attach parts 2, as shown. Turn cam locks clockwise to tighten, as shown.



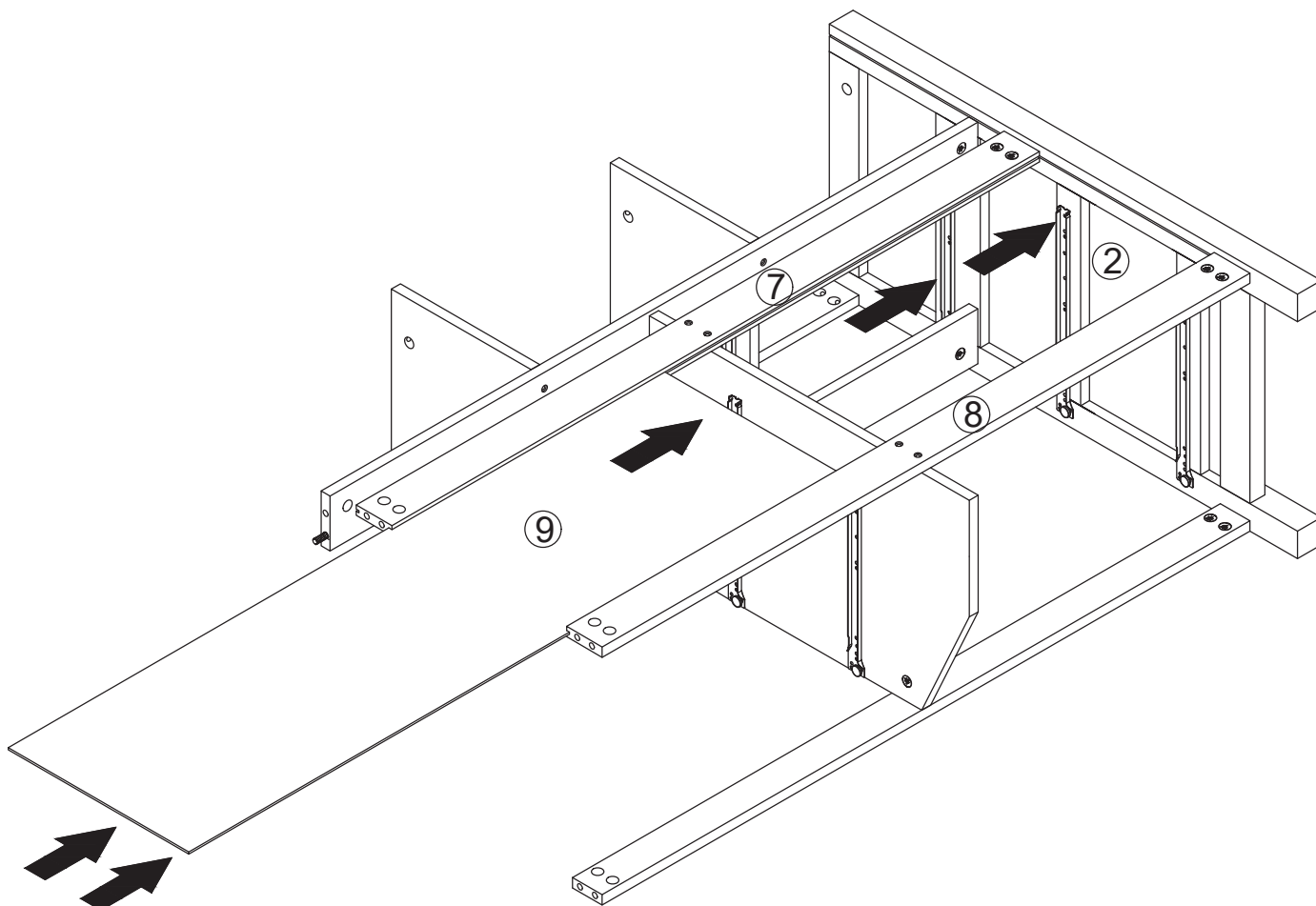
Step 12

Lock the accessories (A) at the corresponding positions on board 1, as shown.



Step 13

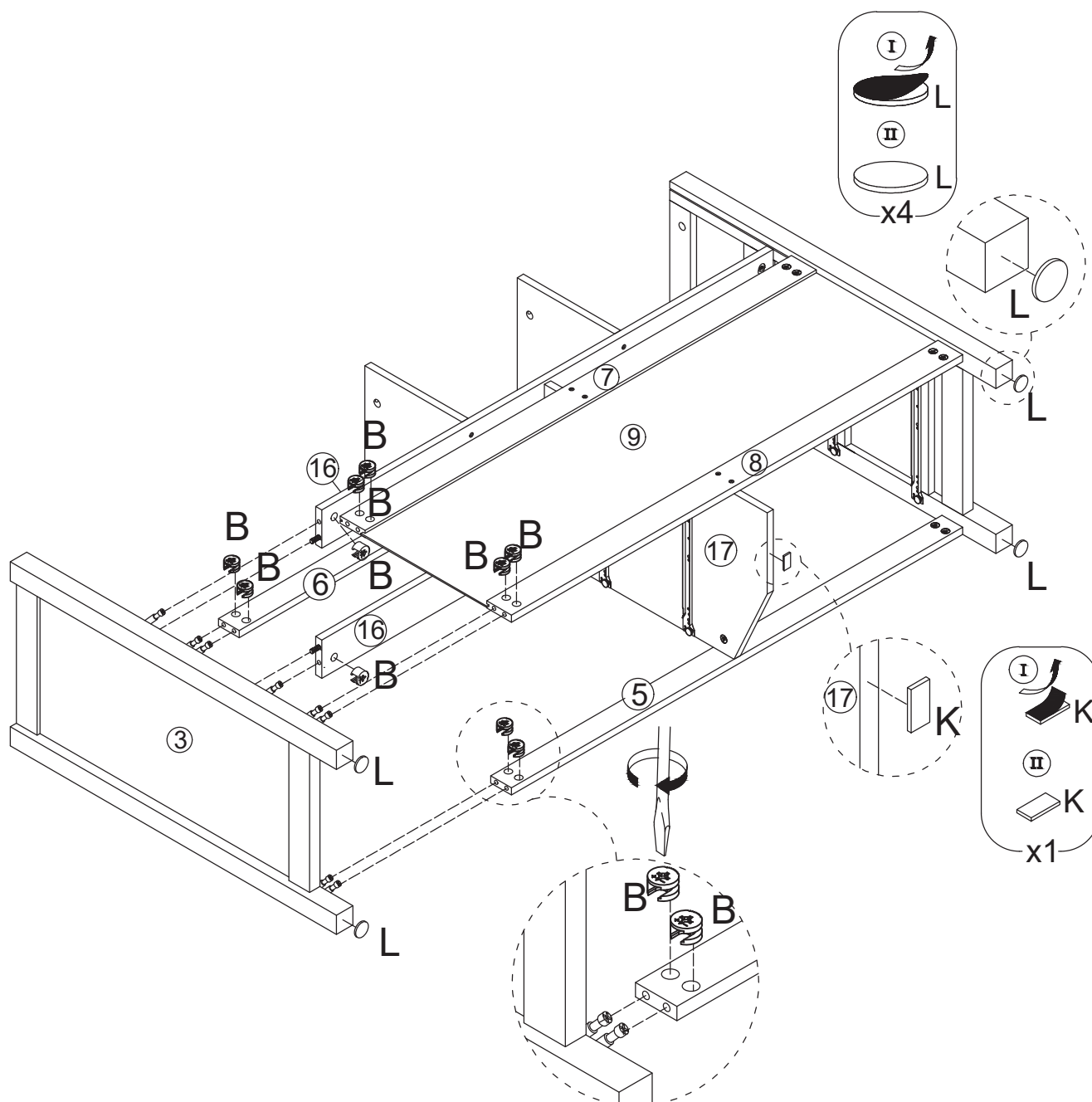
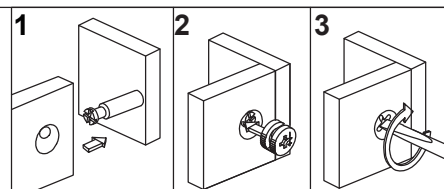
Insert a piece of bck board 9 into the slots of board 7 and board 8,as shown.



Step 14

Insert cam locks (B) into parts 5, 6, 7, 8, 16 and attach parts 3, as shown. Turn cam locks clockwise to tighten, as shown.

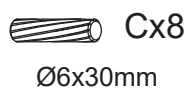
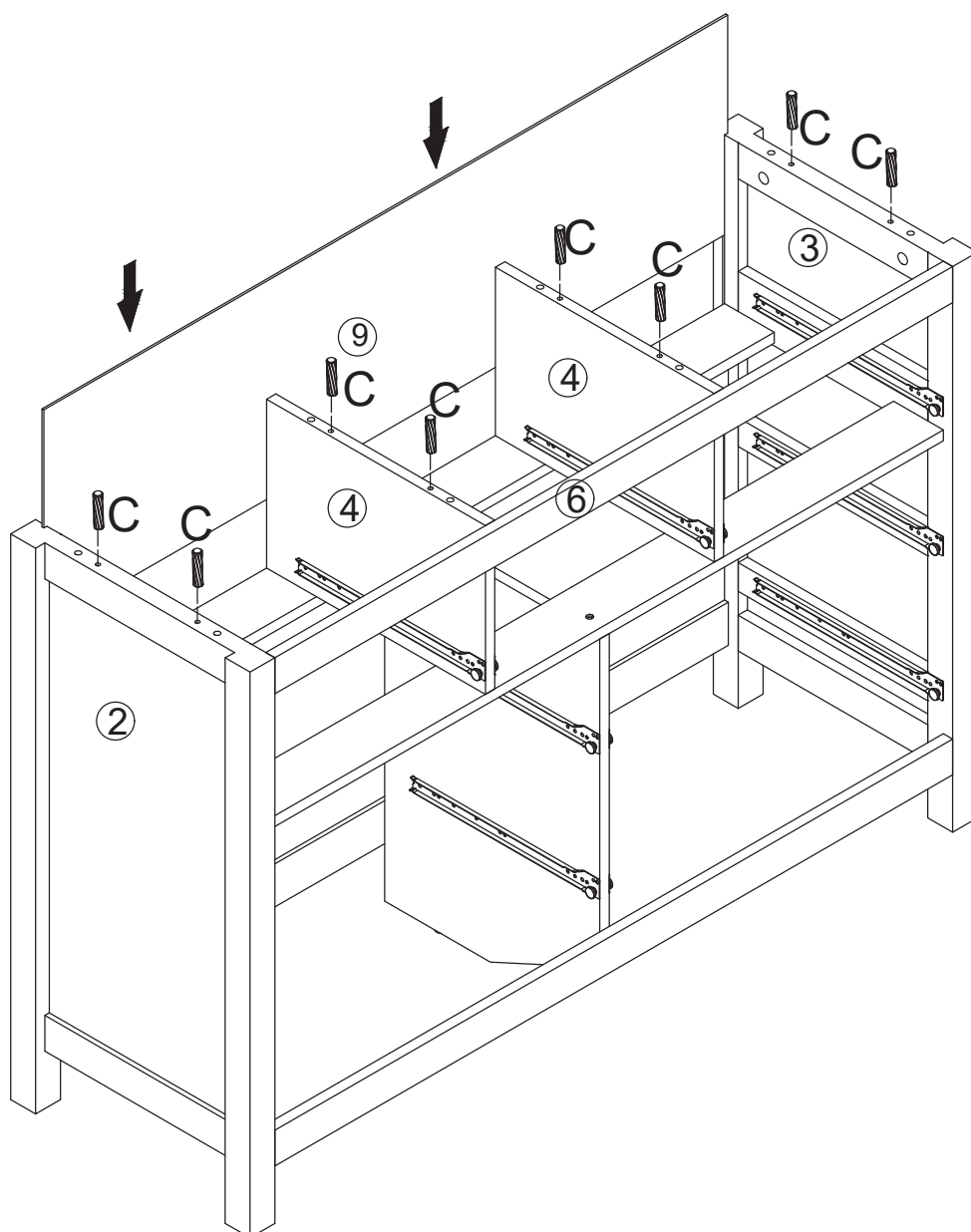
Stick felt pads (L) under the foot pillars of boards 2 and 3, and stick felt pads (K) under board 17.



Step 15

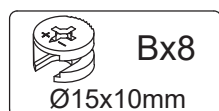
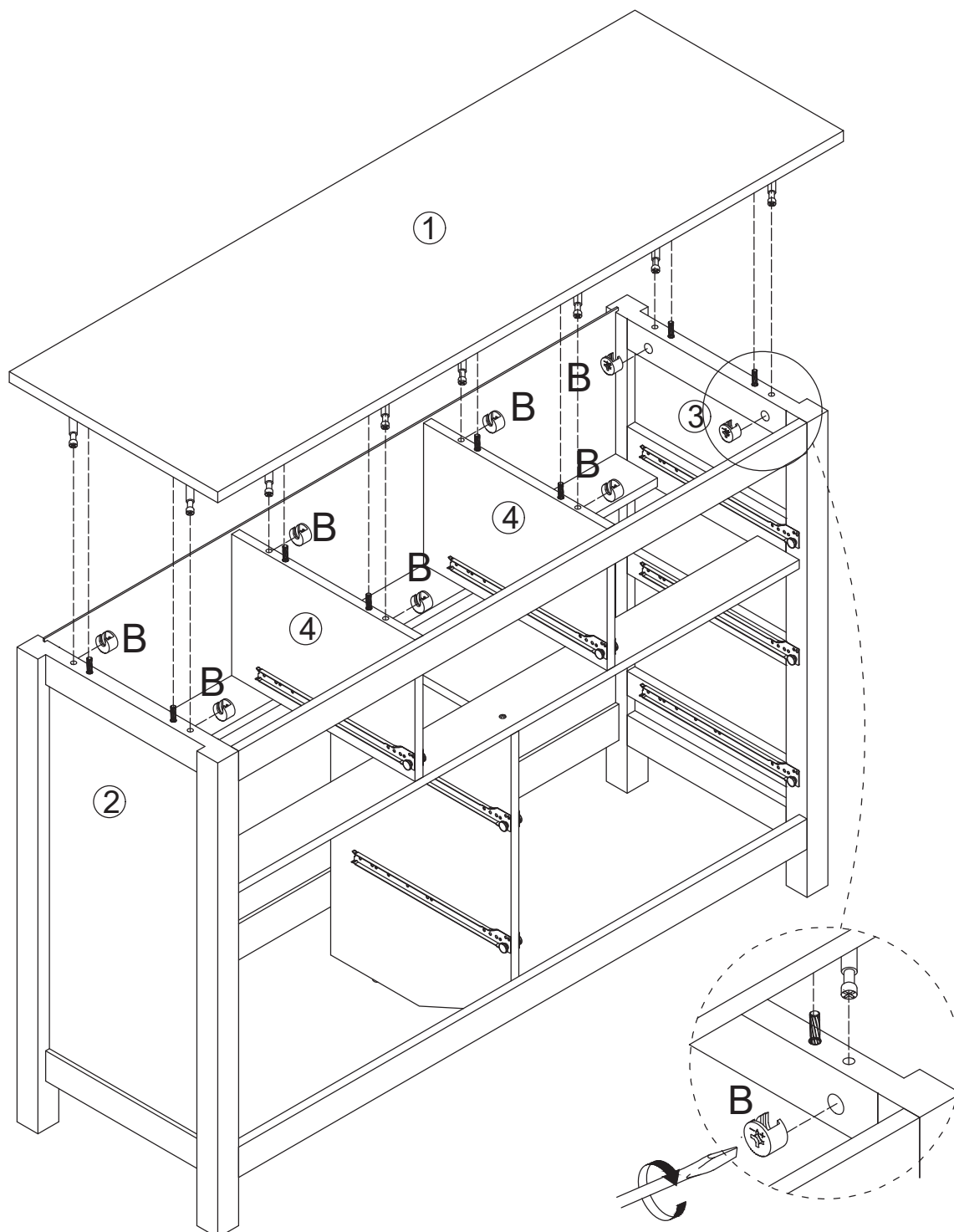
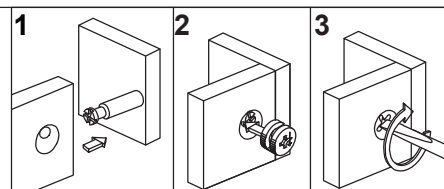
Insert the wooden tenon (C) into the corresponding position of plate 2、3、4,as shown.

Insert a piece of back board 9 into the slots of board 2 and board 3,as shown.



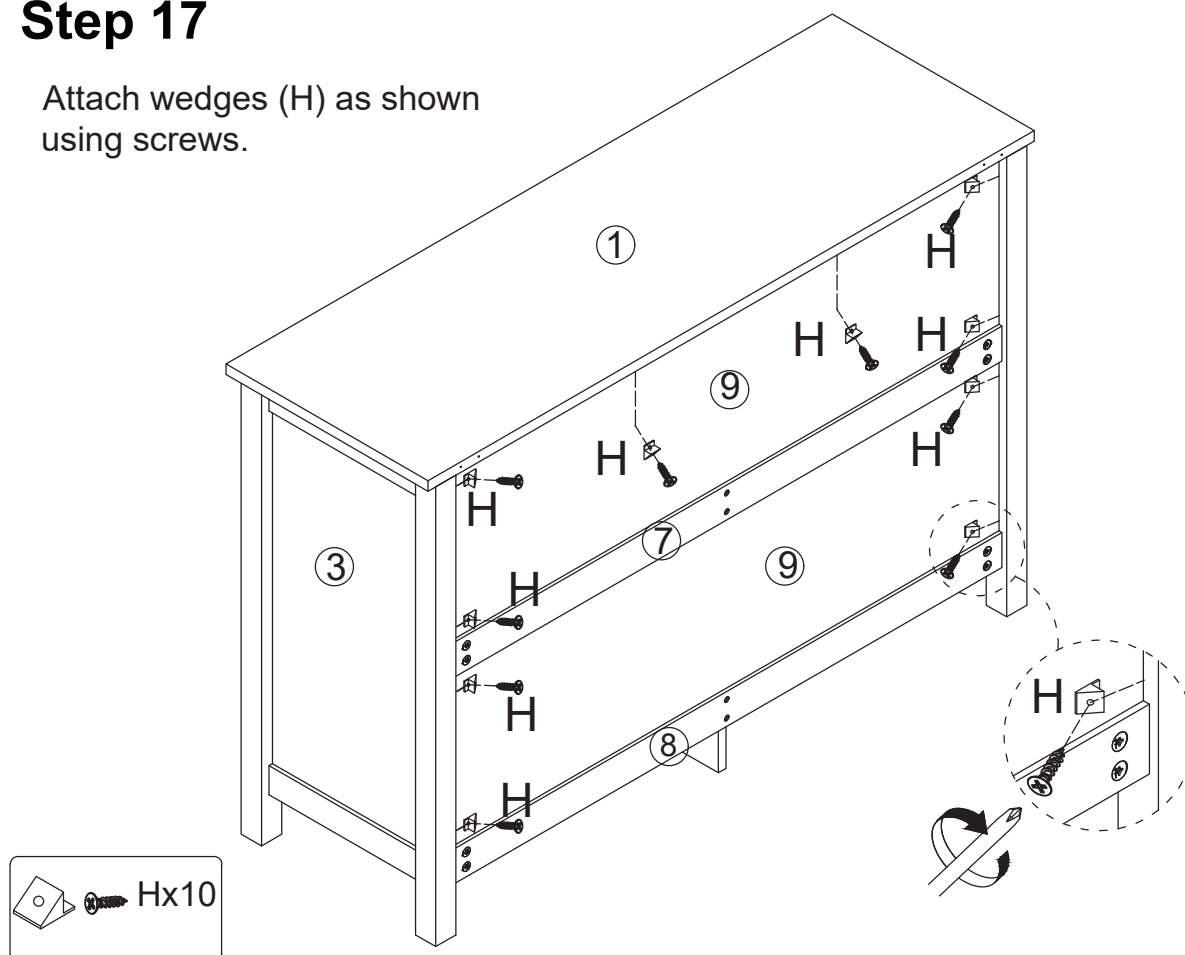
Step 16

Insert cam locks (B) into parts 2, 3, 4 and attach parts 1, as shown. Turn cam locks clockwise to tighten, as shown.



Step 17

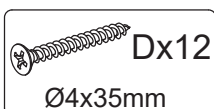
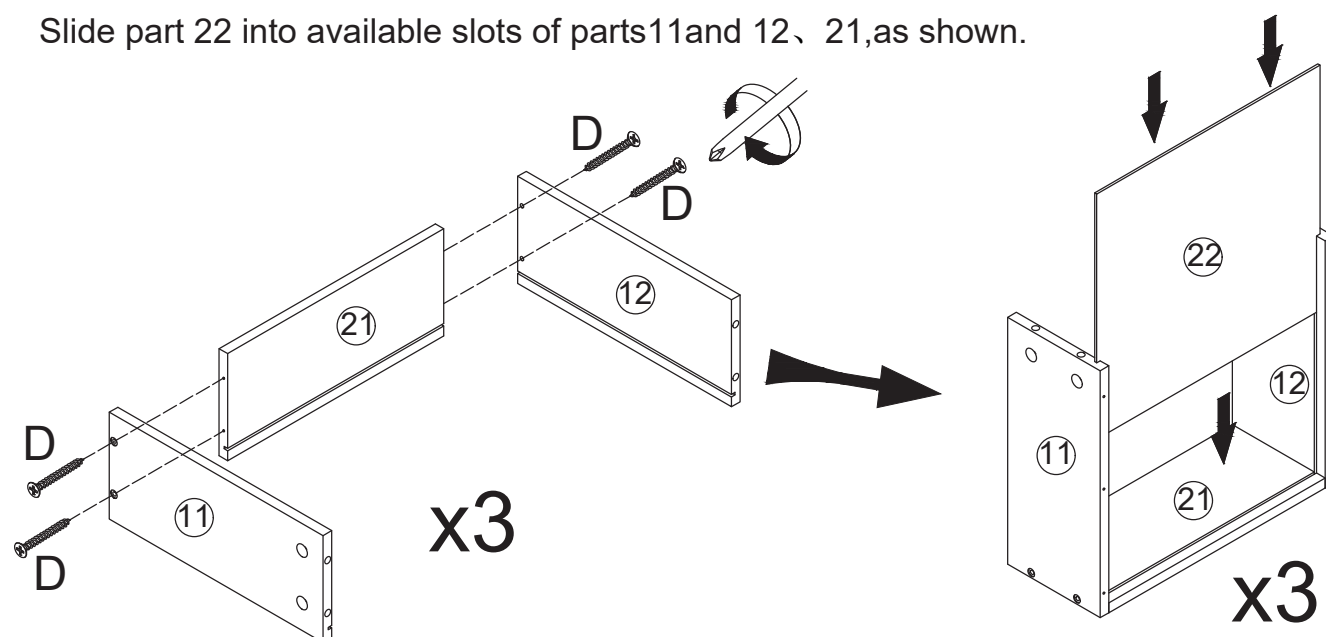
Attach wedges (H) as shown using screws.



Step 18

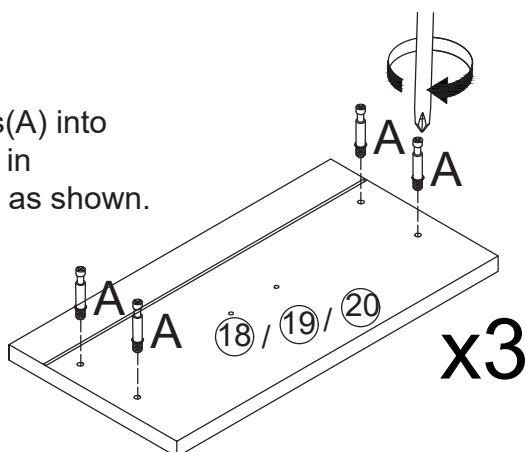
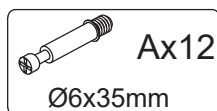
Attach parts 11 and 12 to part 21 using screws (D), as shown.

Slide part 22 into available slots of parts 11 and 12, 21, as shown.



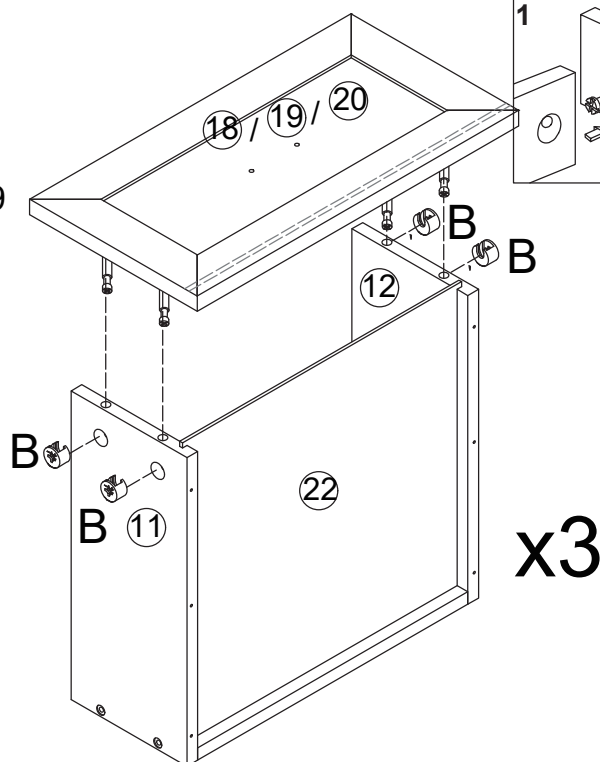
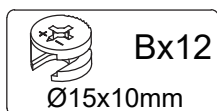
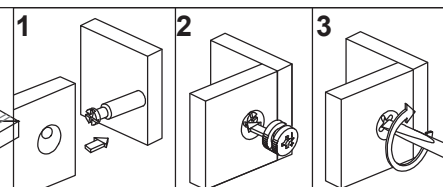
Step 19

Insert quickfit screws(A) into corresponding holes in parts 18、19 and 20 as shown.



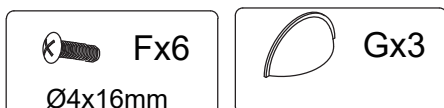
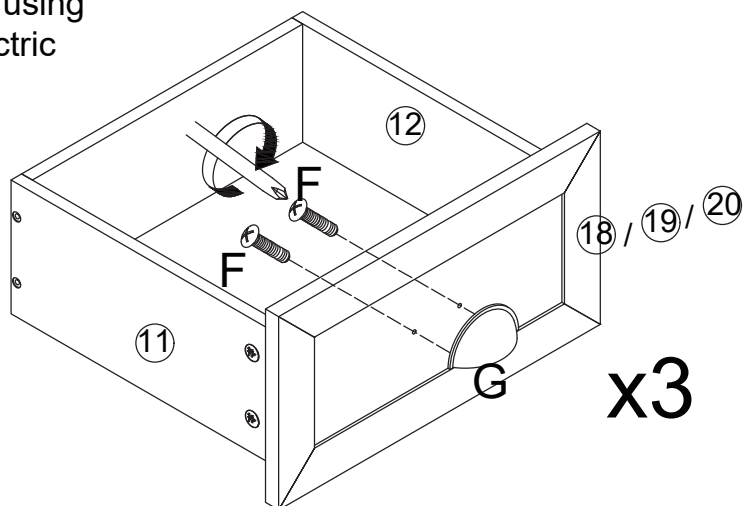
Step 20

Insert cam locks(B) to parts 11 and 12 and attach part 18、19 and 20 as shown. Turn cam locks clockwise to tighten.



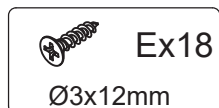
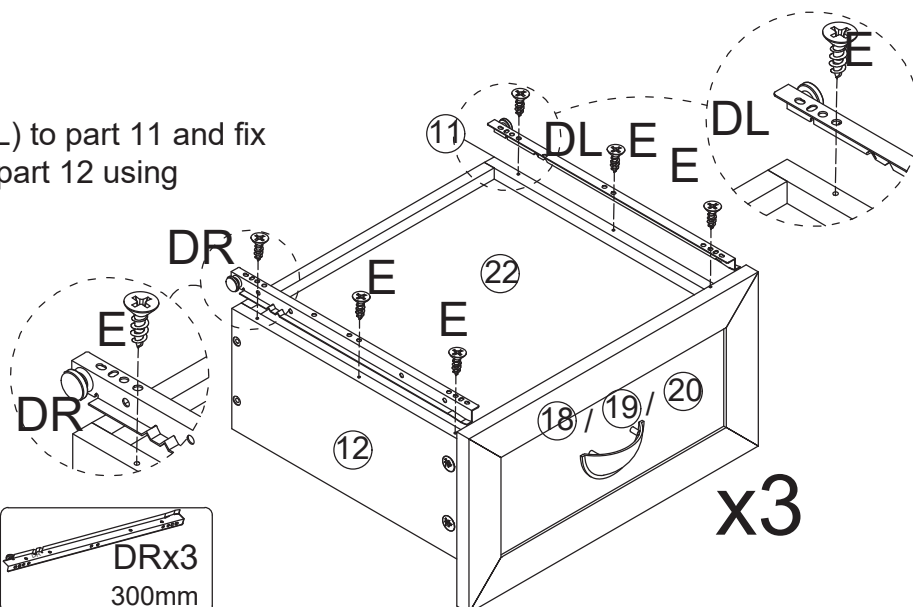
Step 21

Fix handle (G) to part 18、19 and 20 using bolts(F), as shown. Do not use an electric screwdriver,



Step 22

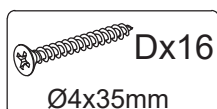
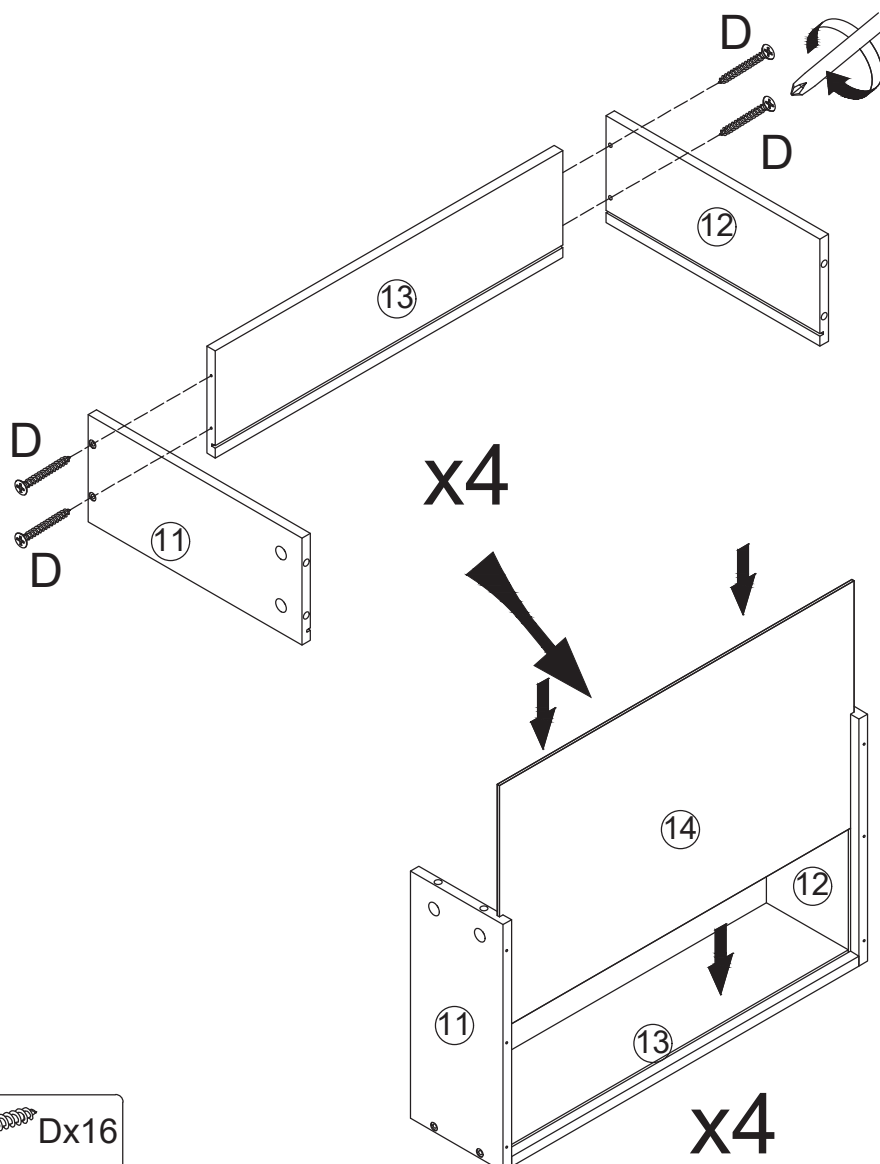
Fix left inner drawer runner (DL) to part 11 and fix right inner drawer runner (DR) part 12 using screws (E), as shown.



Step 23

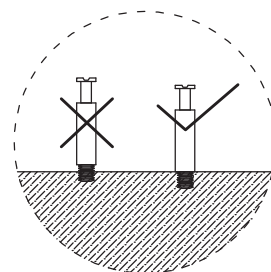
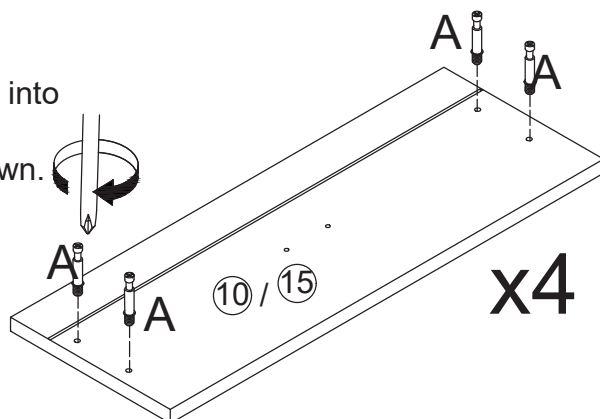
Attach parts 11 and 12 to part 13 using screws (D), as shown.

Slide part 14 into available slots of parts 11 and 12, 13, as shown.



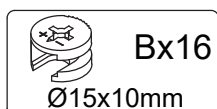
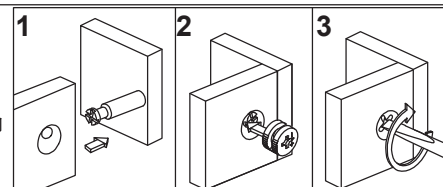
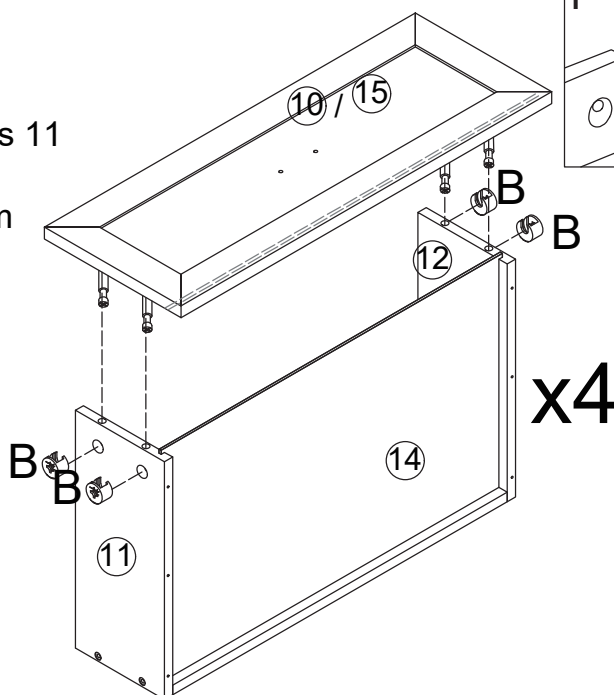
Step 24

Insert quickfit screws(A) into corresponding holes in parts 10 and 15 as shown.



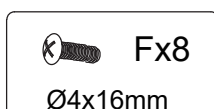
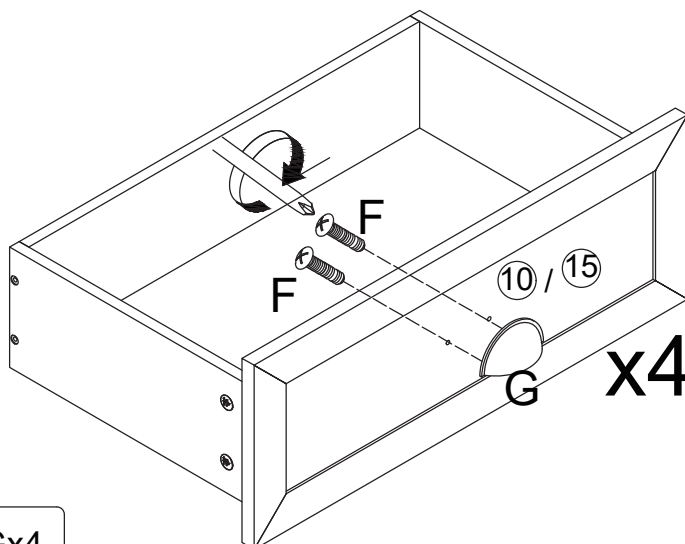
Step 25

Insert cam locks(B) to parts 11 and 12 and attach part 10 and 15 as shown. Turn cam locks clockwise to tighten.



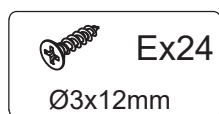
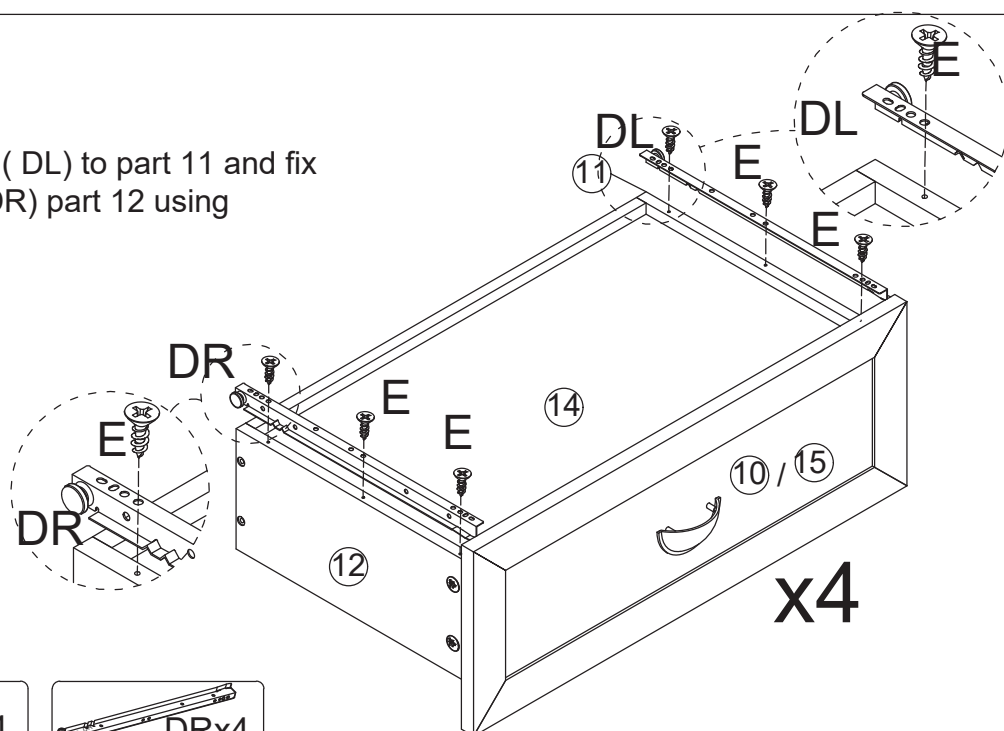
Step 26

Fix handle (G) to part 10 and 15 using bolts(F), as shown. Do not use an electric screwdriver,



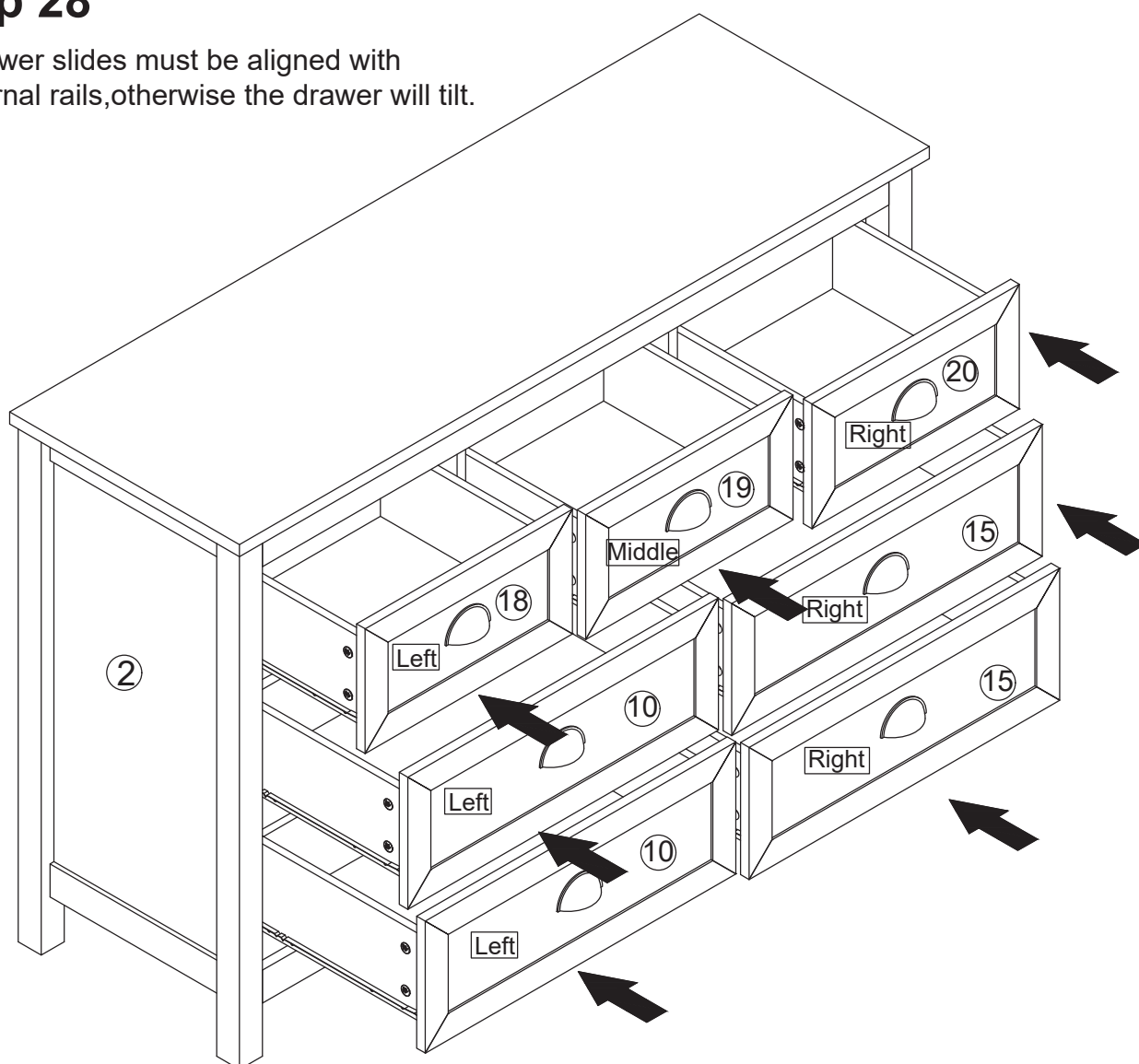
Step 27

Fix left inner drawer runner (DL) to part 11 and fix right inner drawer runner (DR) part 12 using screws (E), as shown.



Step 28

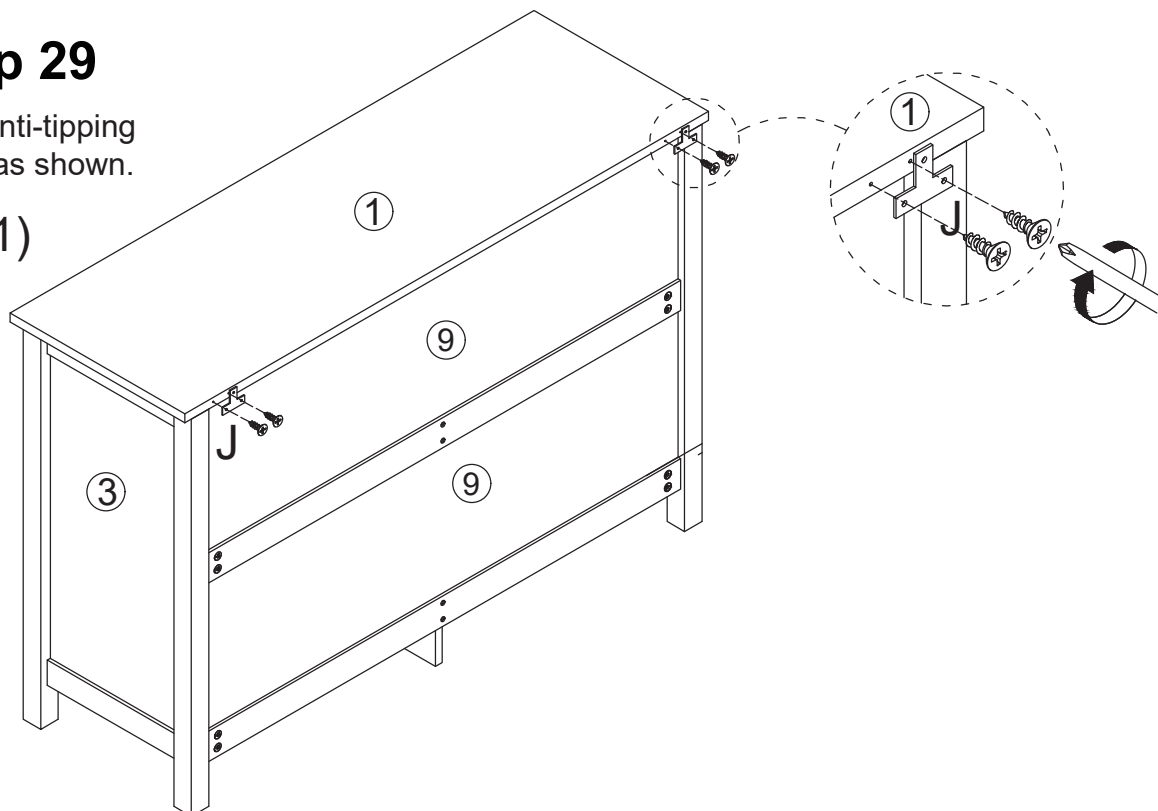
The drawer slides must be aligned with the internal rails, otherwise the drawer will tilt.



Step 29

Install anti-tipping device as shown.

(1)



(2)

