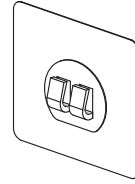
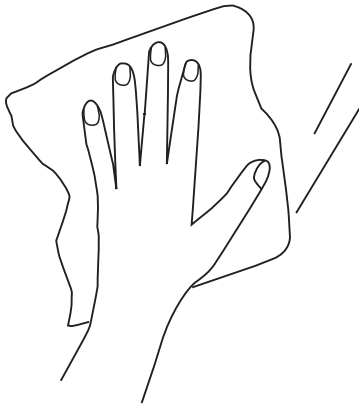


Ax2



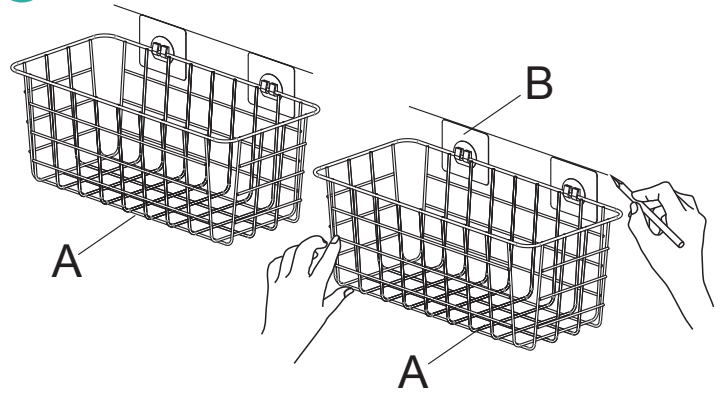
Bx4

1



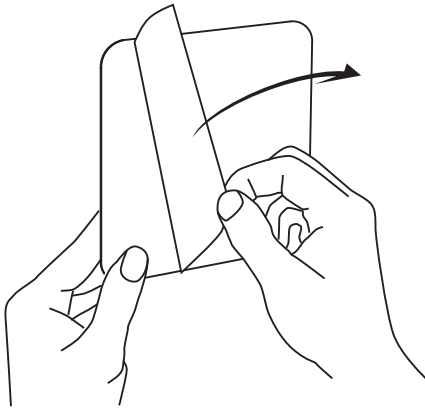
Clean and dry the surface.

2



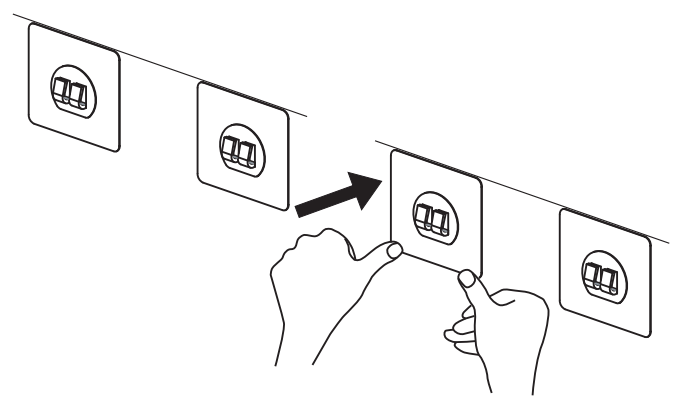
Hang the shelf on hooks before installing, then mark the position and height.

3



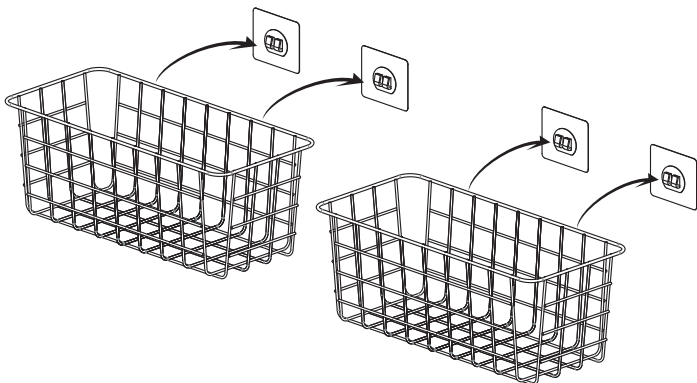
Tear off the protective film.

4



Stick the adhesives to the surface, make sure the two adhesives are consistent in height. Press firmly to squeeze air out. This step is very IMPORTANT.

5



Hang the shelf on the hook. Wait 24 hours before using.

6

