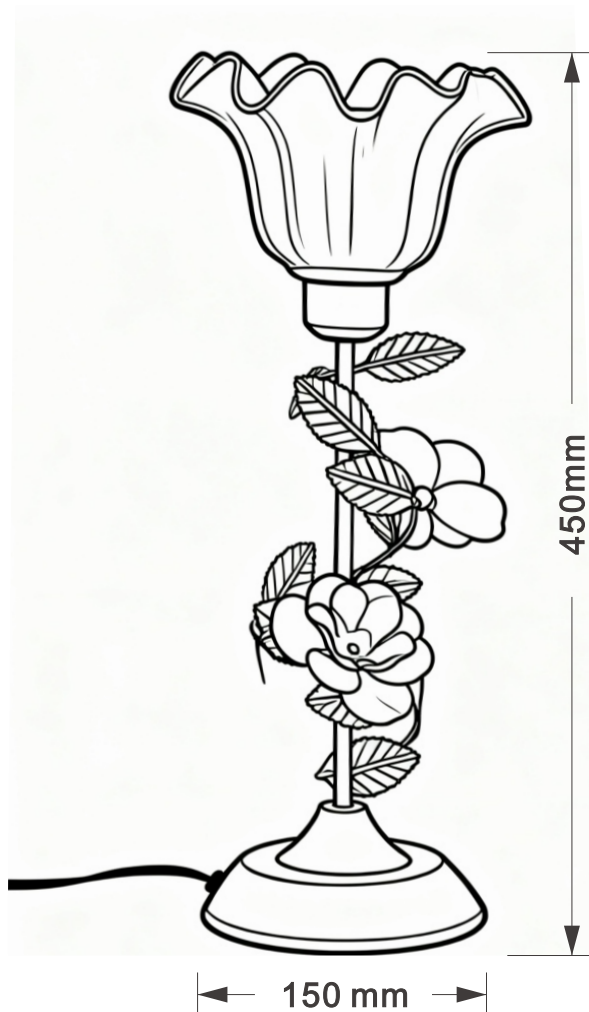
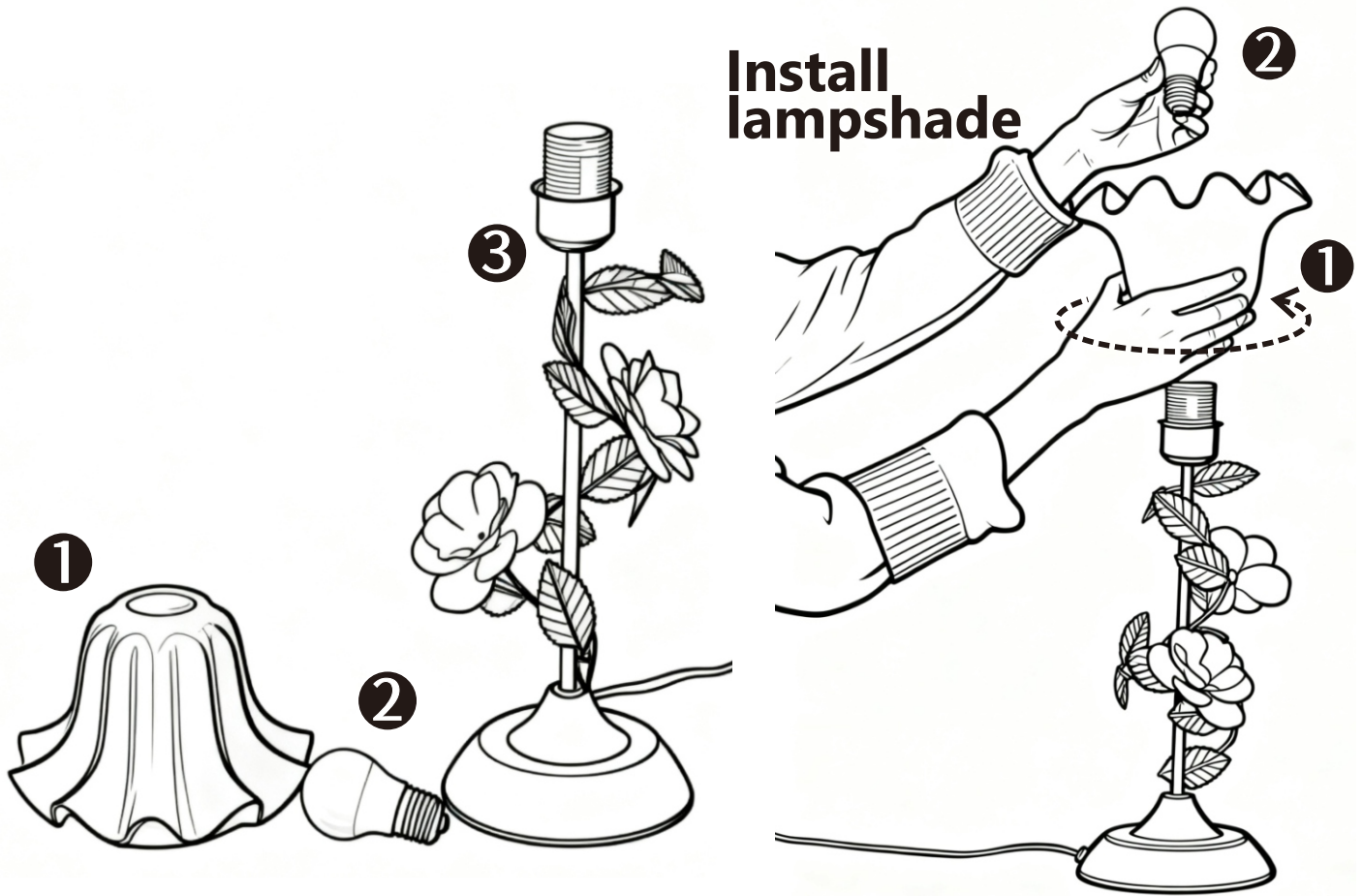


Vintage Leaf & Lily Lamp Table Lamp



The product consists of three parts: No. 1 Lampshade, No. 2 Light Source, and No. 3 Lamp Body. Follow Steps 1, 2, and 3 illustrated above to install the lampshade. (Note: The lampshade is equipped with internal threads—align it properly and screw it in clockwise.) Important: This product is not waterproof. Please store it in a cool, dry place.

Flowers are fragile; please avoid pinching or breaking them.