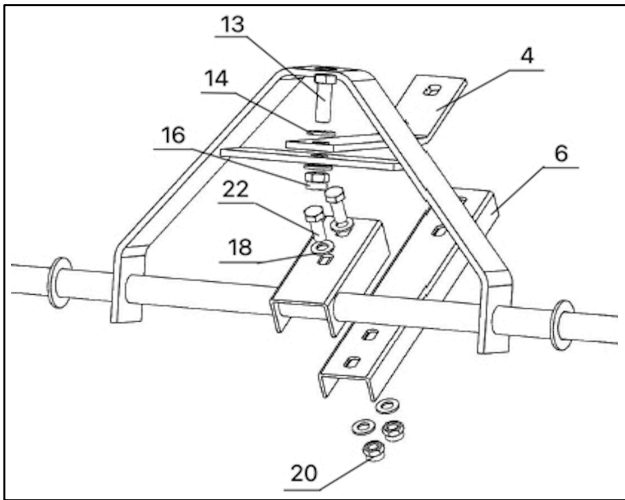


# Trailer Dolly QUICKASSEMBLE GUIDE

## STEP 1

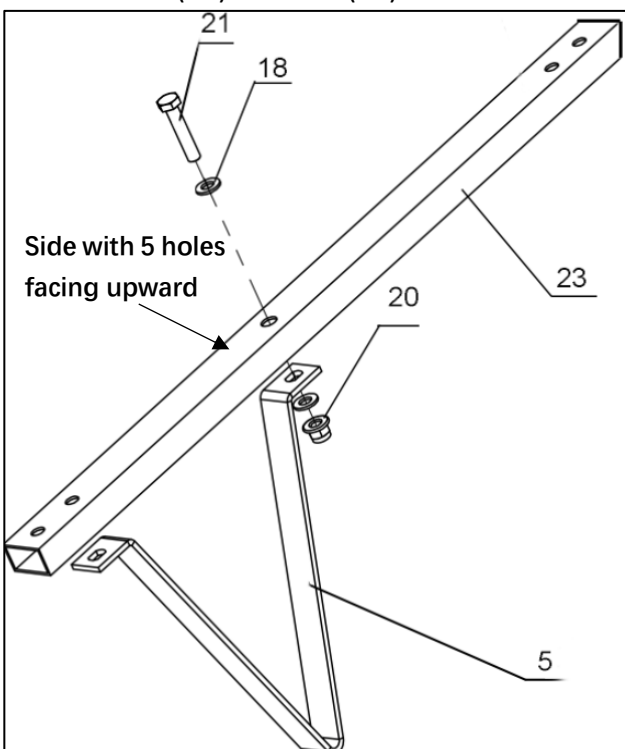
Set out the Support Frame (3), connect Handle Bracket I (6) to center bracket of Support Frame (3) using Bolts (22), Flat Washers (18), and Nuts (20).

Then Connect longer part of Link Bar (4) to horizontal cross brace of Support Frame with Bolt (13), Washers (14) and Nut (16).



## STEP 2

Place the Lower Section Handle (23) with the side having three holes facing downward. Position Triangle Stand (5) underneath the Lower Section Handle (23), align the upper side hole of Triangle Stand (5) and the upper hole of Lower Section Handle (23), and secure them first using a Bolt (21), Flat Washers (18) and Nut (20).

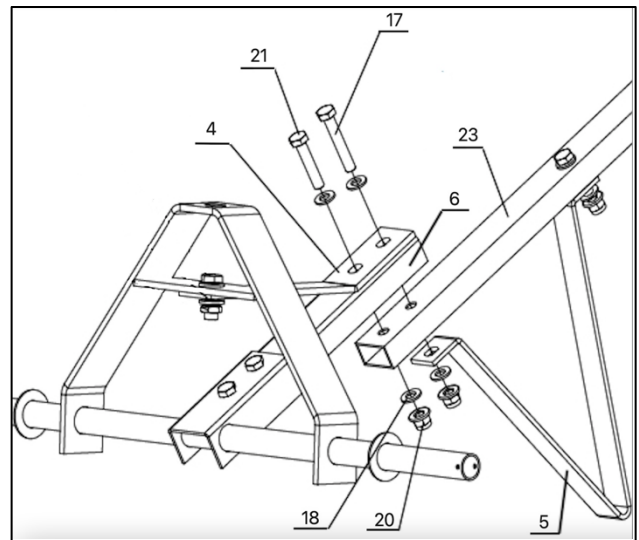


## STEP 3

Understand how lower end of Handle (23) fits inside Handle Bracket I (6).

Align the holes of Link Bar (4), Handle Bracket I (6) and Lower Section Handle (23). Insert a Bolt (21) through all lower holes and secure with a Washers (18) and Nut (20).

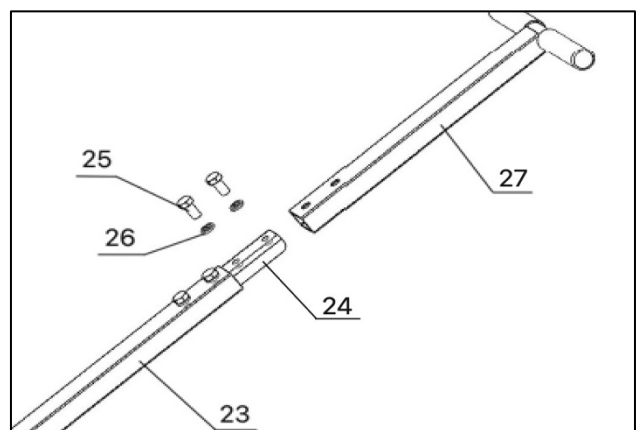
Align another group holes of Link Bar (4), Handle Bracket I (6) and Lower Section Handle (23), and lower side hole of Triangle Stand (5), Insert a Bolt (17) through the above holes and secure with Washers (18) and Nut (20).



## STEP 4

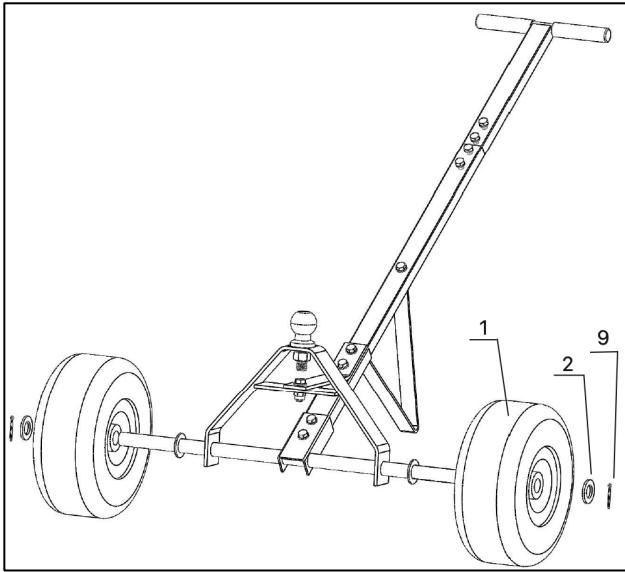
Place the Handle Bracket II (24) with the opening of U-shape facing downward. Slide it into the Lower Section Handle (23), align the holes and secure them with two Bolts (25) and Spring Washers (26).

Slide the open end of the Upper Section Handle (27) onto the upper end of the Handle Bracket II (24), align the holes and secure them with two Bolts (25) and Spring Washers (26).



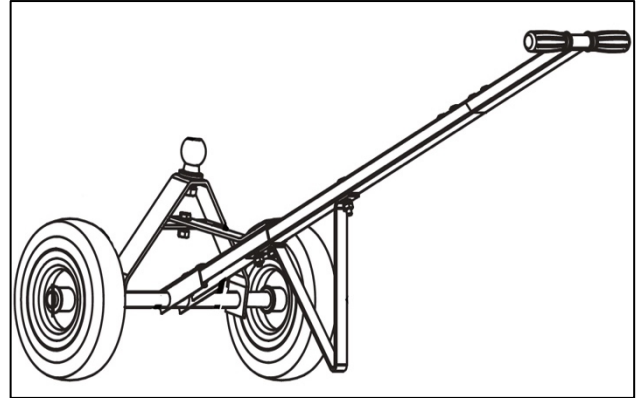
**STEP 5**

Slide on Wheel (1) at each end of axle, add Washer (2) to each end of axle and secure Wheels in place by inserting Split Pins (9) through the axle.



**STEP 7**

With assembly complete, tighten all hardware and roll the Trailer Dolly to make sure it functions properly.



**STEP 6**

Attach the Hitch Ball (10) to top of Support Frame, using Nut (11) and Spring Washer (12).

