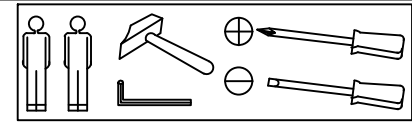
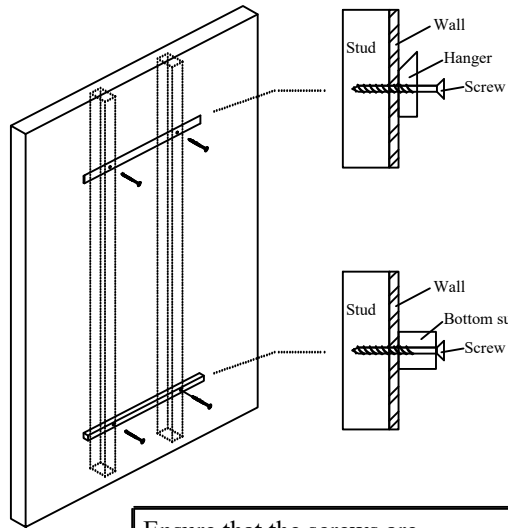


# INSTALLATION CHART

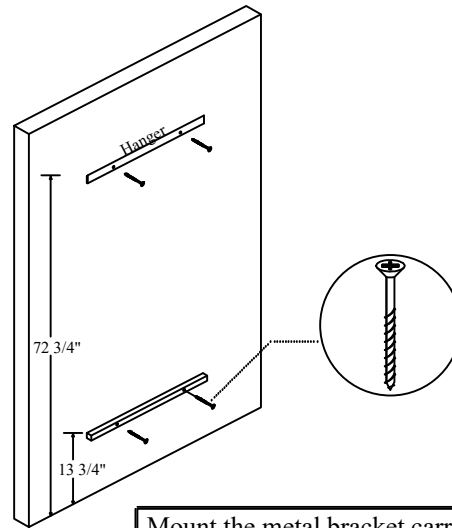


1



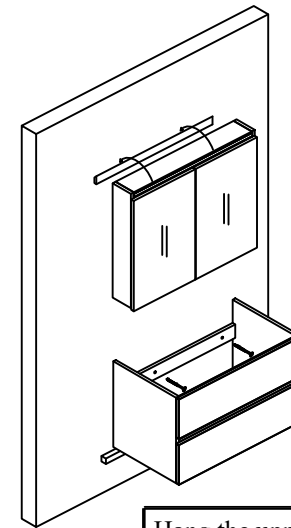
Ensure that the screws are secured to the studs.

2



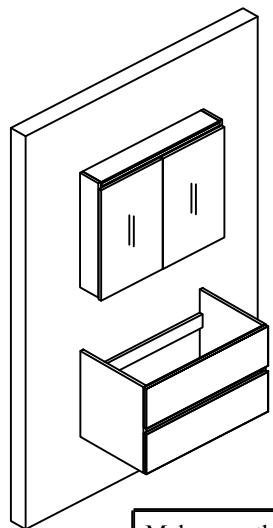
Mount the metal bracket carrier to the wall with the desired dimensions(or height).

3



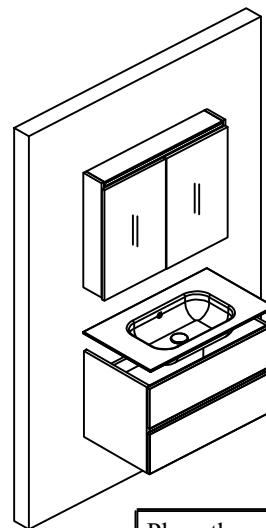
Hang the upper unit and mount the vanity base.

4



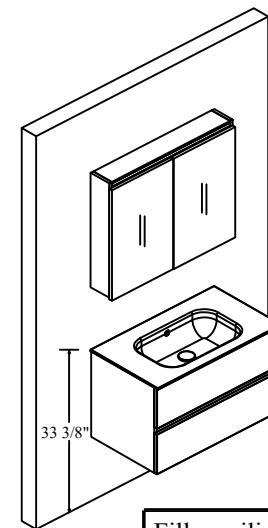
Make sure the vanity base is secured from the bottom with the metal bracket carrier.

5



Place the countertop on the vanity base.

6



Fill up silicon between the countertop and the wall.