

Transitional Collection

Infrared Sensor Kitchen Faucet
With Pull-Down Spray



Installation/Installation/Instalación

CUSTOMER SERVICE

TOLL-FREE 1-888-OK-ULTRA (658-5872)

UF19300 - Polished Chrome

UF19303 - PVD Brushed Nickel

UF19305 - Oil Rubbed Bronze



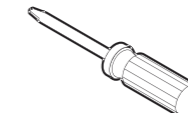
Tools You Will Need / Outils dont vous aurez besoin / Herramientas necesarias



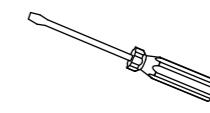
Adjustable Wrench
Clé à molette
Llave ajustable



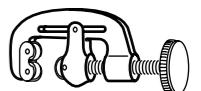
Pipe Tape
Ruban pour tuyau
Cinta selladora para rosca



Screwdriver
Tournevis
Destornillador



Phillips Screwdriver
Tournevis Phillips
Destornillador cruciforme



Tube Cutter
Machine Coupez le tuyau
Bañera de corte

SAFETY TIPS

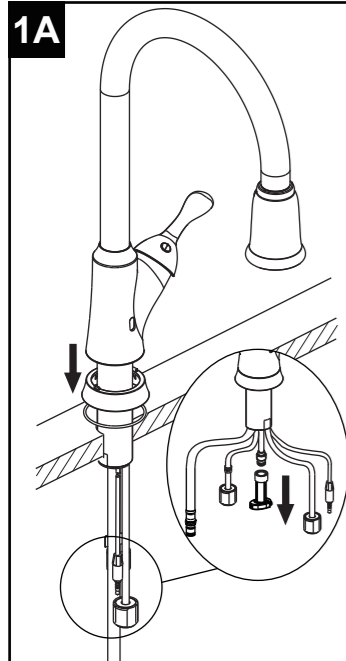
- If you use soldering for the installation of the faucet, the seats, cartridges and washers will have to be removed before using flame. Otherwise, warranty will be void on those parts.
- Cover your drain to avoid losing parts.
- 0°C~55°C.

CONSIGNES DE SÉCURITÉ

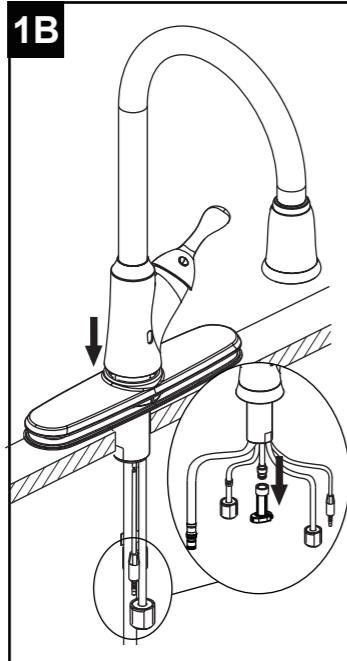
- Si vous posez le robinet par brasage, il est essentiel de retirer les sièges, les cartouches et les rondelles avant d'appliquer la flamme, faute de quoi la garantie sur ces pièces sera annulée.
- Couvrez le drain pour ne pas perdre des pièces.
- 0°C~55°C.

CONSEJOS DE SEGURIDAD

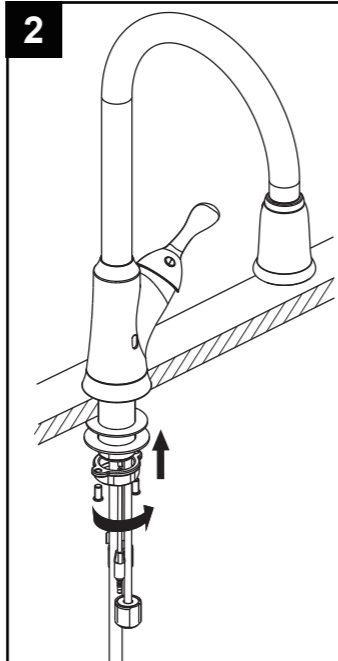
- En el caso de utilizar soldadura para instalar el grifo, remueva los asientos, cartuchos y arandelas antes de usar la llama. De lo contrario, se anulará la garantía para esos componentes.
- Tape la boca del desagüe para prevenir la pérdida de piezas pequeñas.
- 0°C~55°C.



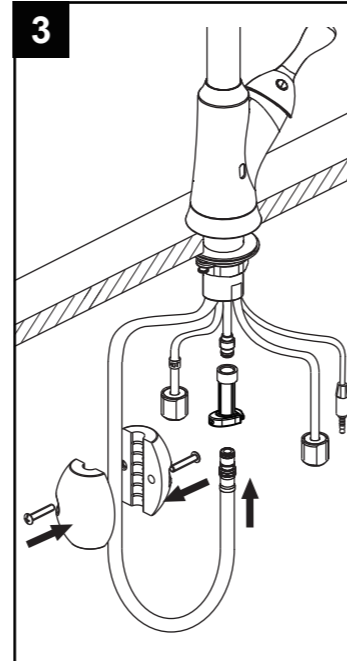
Put the faucet, base and the O-ring into the mounting hole.



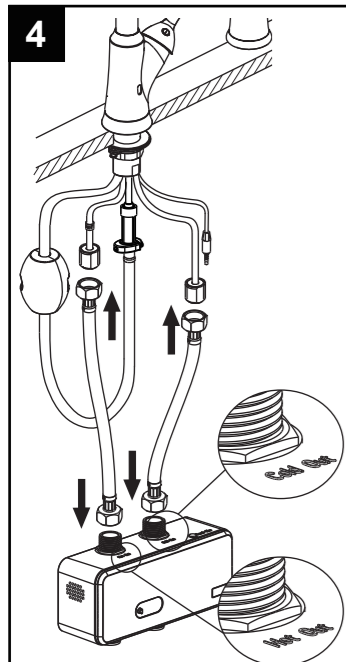
Put the faucet, deck plate and the base into the mounting hole.



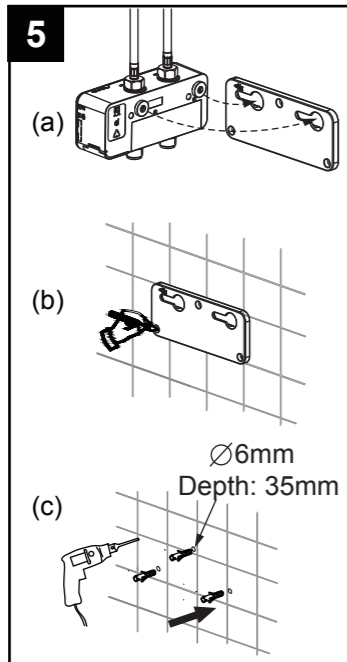
Install rubber washer, steel washer, and locking nut onto the shank. Tighten locking nut with a basin wrench or socket tool. Install 2 screws to secure faucet in place.



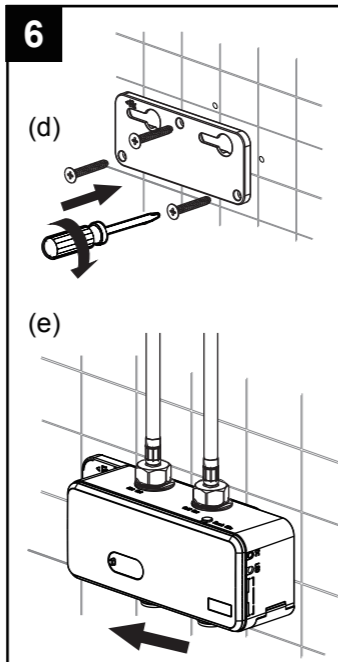
Connect the check valve, the spray hose to the copper tube with the quick connector, and install the weight to the spray hose.



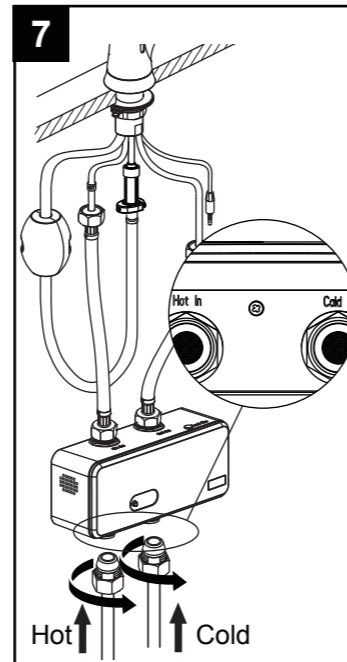
Connect (do not overtighten) outlet supply hoses to the control box interface (Cold Out and Hot Out), then to the Cold and Hot copper tubes.



(a) Remove the wall plate from the control box.
(b) Position the mounting board & mark the location of holes.
(c) Drill the holes as indicated & install anchors into the wall.



(d) Fixate the board with set screw using the phillips screwdriver.
(e) Attach the mounting flanges of the control box to the mounting board, and slide the control box to the left.

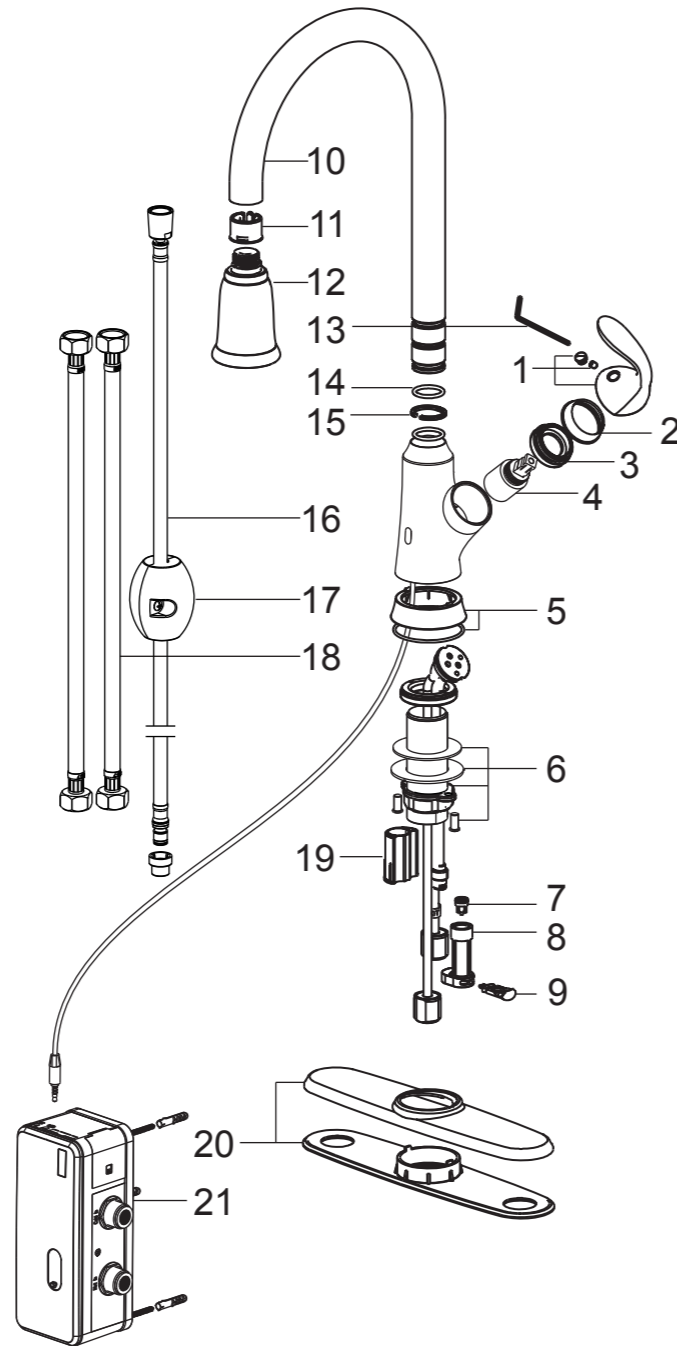


Source your own additional pair of supply hoses. Connect (do not overtighten) them to control box interface (Cold In and Hot In), then to the Cold and Hot water supply valves.

Installation/Installation/Instalación

**UF19300
UF19303
UF19305**

NO.	Description	Part No.
1	Metal Handle Assembly	9Q0976CP
2	Cap	5L0C0283CP/AP/HA
3	Retainer Nut	5N0C0697NT
4	Ceramic Disc Cartridge	52007014PL
5	Base Assembly	9Q0977CP
6	Mounting Hardware Assembly	5Q0M0336NT
7	Check Valve	5D0M0003PL
8	Quick Connector	5L0P0440PL
9	Retainer Clip	5M0P0132PL
10	Spout	5B0C0299CP/AP/HA
11	Hose Guide	5Y0P0014PL
12	Sprayer	5F0M0112CP/AP/HA
13	Hex Wrench	51002812NT
14	O-Ring	5R0R0152PL
15	Lock Washer	5M0P0016PL
16	Spray Hose	5G0M014201CP7
17	Weight	5X0M0063PL
18	Outlet supply hose	5G0003400CC7
19	Hose Guide	53013138PL
20	Deck Plate Assembly	9Q0978CP
21	Control Box	5Y0148600PL0



Limited Lifetime Warranty

Ultra Faucets warrants to the original purchaser that its products will be free from defects in workmanship and materials. All Ultra Faucets are provided with a life time limited warranty. This warranty does not cover any other labor or service charges associated with the removal, repair, or reinstallation of Ultra Faucets products. This express warranty does not apply to products that have been damaged as a result of misuse, abuse, negligence, accident, faulty installation or maintenance practices and/or used in any manner contrary to those recommended by the manufacturer.

Need help? Please call our toll-free customer service line at 1-888-658-5872 for additional assistance or service.

Besoin d'aide? Veuillez communiquer avec notre service à la clientèle au numéro gratuit 1-888-658-5872 pour tous renseignements ou services complémentaires.

¿Requiere asistencia? Llame a nuestro Servicio al Cliente, sin costo, al 1-888-658-5872 para asistencia adicional o servicio.

Installation/Installation/Instalación

**UF19300
UF19303
UF19305**

8

Insert the sensor cable of faucet into the IR connector of the control box interface.

9

Take out the battery case and disconnect 2 pin connectors from battery case.

10

Install 4 AA battery (1.5V), then connect 2 pin connectors to the battery case

11

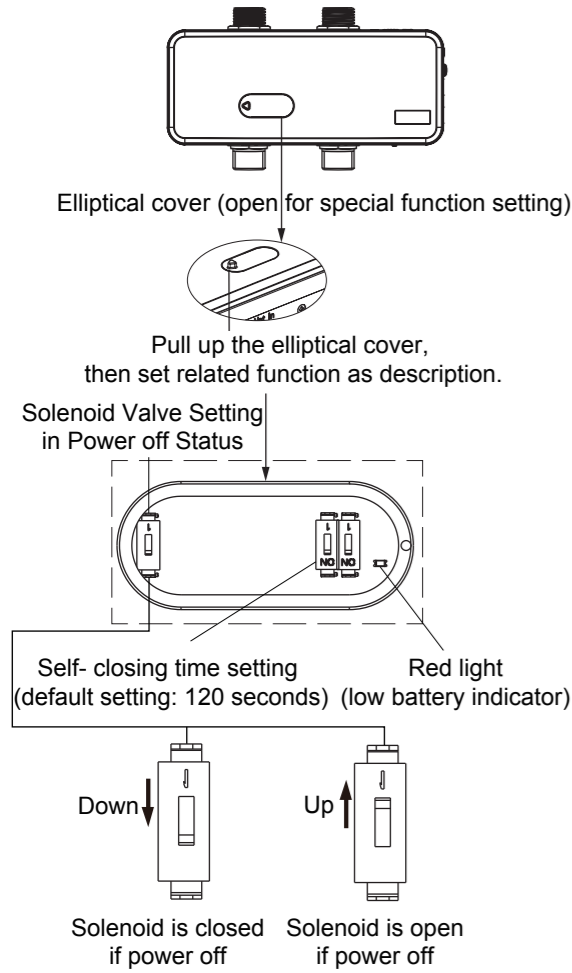
Return the battery case into the control box (follow the direction of red arrow), then close the cover of battery case.

12

Sensing distance: ≤ 4 in
Effective sensing time:
 ≥ 0.3 seconds & ≤ 2 seconds.

1. Unscrew spray head
2. Turn on both hot & cold water supply to allow both hot & cold water to run for one minute to flush out any debris in water lines. Check for leaks.
3. Re-install spray head.

Note: To activate water flow ensure handle remains opened and place your hand (do NOT wave) within 4 inches in front of sensing window for 0.3~2.0 seconds. To stop water flow, repeat the same.



Description of related function :

1. Self- Closing time setting (4 choices): 15 seconds, 30 seconds, 60 seconds or 120 seconds.

Icon	Down Down	Up Down	Down Up	Up Up
Self-closing time	15	30	60	120

2. Solenoid Valve Setting in Power off Status:
 - a. Setting at Solenoid Valve closed (default setting): when the power supply is interrupted or unavailable, the faucet cannot work as traditional mechanical faucet. The faucet can only be operated again after changing new batteries or power is restored.
 - b. Setting at Solenoid Valve open: when the power supply is interrupted or unavailable, the faucet can work as traditional mechanical faucet.
3. Sensor indicator: when effective touch sensing, the red light of the Sensor window will flash red light once.
4. Low battery indicator: If the power is going to run out, both red light of the Sensor window and control box will be flashing.

Normal use :

1. Power on: The faucet will be in stand-by mode after 5 seconds.
2. Water flow: Approach your hands to the sensor window to start the water flow, and then adjust the water temperature & volume with the handle. Stop the water flow by sensing again.
3. Faucet cleaning: Turn off the Handle before cleaning.
4. Low battery indicator: If the power is going to run out, red light of the sensor window and control box will be flashing.

Important Notes :

1. Faucet Handle must be turned on to function during Initial installation.
2. **When setting at Solenoid Valve open, if the handle is turned on while the power is interrupted or unavailable, the water will flow out until someone turns off the handle (Potential risk existing if no one stays at home). When you choose this mode, please turn off the handle if you are absent from your home for a long time.**
3. Please insert the "filter gasket" in the water inlet of the control box when connected the inlet hose to the control box.
4. Effective sensing time: ≥ 0.3 seconds & ≤ 2 seconds.

PARAMETER	
Power	Dc type: AA SIZE 1.5V Battery , 4 pcs Ac type: Input 120V/60Hz , Output DC6V/0.5A
Solenoid valve life time	≥ 500 thousand times
Water supply size	G1/2
Standby power consumption	≤ 0.9 mW
Infrared sensing distance	≤ 4 in
Cold water inlet temperature	Normal temperature(≥ 39.2 °F)
Hot water inlet temperature	≤ 158 °F

	Issue	Troubleshooting	Occurrence
1	No water flow while sensing the faucet	No power to the Control Box	Initial installation
		Sensor cable not pushed completely into the socket of the control box	Initial installation
2	Restricted water flow	Check if faucet handle is not fully turned on	Initial installation
		Check if hoses are bent or kinked	Initial installation
		Check if filters are blocked with debris	After long term use
3	Does Not function after battery installation and LED indicator blinks red	Battery polarity is opposite	Initial installation or during battery replacement
		Battery case not connected to 2 pin connectors	
4	Incorrect self-closing time for water flow	Check if setting position follows the installation instruction	Initial installation
5	Hot/cold water not corresponding to hot/cold handle indicator	Check if the hot/cold in and out hoses incorrectly connect to control box's hot/cold in and out interface	Initial installation
6	Red indicator flashing once per second	Replace batteries	After long term use
7	Water flow automatically without sensing or water flow does not close by sensing	This issue occurs when batteries run out of power, solenoid valve is set open and faucet handle is on open position as well. Please turn handle off first and replace batteries, then turn on handle and sense faucet	After long term use