

## Before you begin!

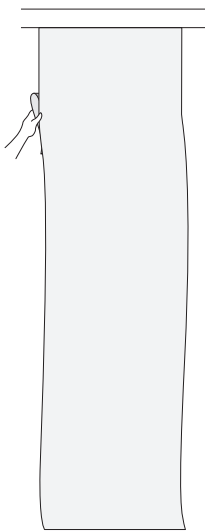
### The DO's

- Apply on finished surfaces only (i.e. primed and painted walls).
- Apply to room temperature surfaces (~68 degrees F, or 20 degrees C).
- Wait at least two weeks before applying to newly painted walls.
- Wash and completely dry your hands before application.
- After applying each sheet, smooth over entire area with pressure, **paying special attention to the edges.**

### The DON'Ts

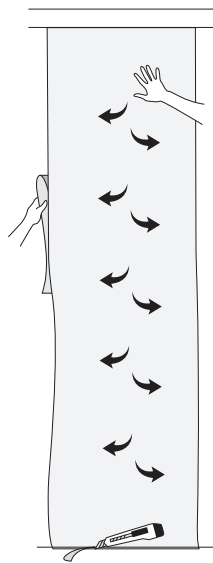
- Do not apply to unfinished surfaces (i.e. bare concrete).
- Do not apply to cold surfaces.
- Do not apply to freshly painted walls (please wait at least two weeks).
- Do not use a squeegee (or anything else besides your hands!) to apply wallpaper.

Murals are numbered at the bottom of each sheet. For multiple sheets, start by installing sheet #1 at the left side of the wall. Move across to the right for each additional sheet.



#### Step 1.

Remove about 12 inches of the backing from the first sheet of wallpaper. Apply from the top of the wall or desired area first.



#### Step 2.

Using your hands, smooth the section of wallpaper from top down and from center outwards (see diagram). Remove the remaining backing as you go down. Use your hands to remove any trapped air bubbles before applying the next piece. Once all sheets have been applied, trim any excess wallpaper as needed with an X-ACTO knife or other sharp craft knife.

**Repeat steps 1 & 2 for additional sheets.**

## Troubleshooting

- What to do if you see air pockets forming during installation: pull back a small section and reapply the wallpaper.
- What to do if air pockets show after installation: poke a hole in the air pocket with a safety pin, then flatten out the wallpaper.

## Handle with Care

- If you need to spot clean, use a dry wallpaper cleaner such as Absorene Antique Wallpaper Cleaner and always test a hidden spot first.
- Please do not use chemical cleaners.

\*If you need to order additional sheets, please take note of IF and WHEN the design repeats. Here is an example: you ordered 4 sheets and find that you actually need 6 sheets to cover your wall. If your design repeats every 5 sheets, you will need to order sheet #5 and sheet #1. If you have any questions or if you would like to place an additional order, please email us at [support@simpleshapes.com](mailto:support@simpleshapes.com) or call 201-945-2343 (M-F 10am - 5pm eastern time).

*We are so happy to have  
made this wallpaper  
especially for you!*

## **IMPORTANT**

**Please follow our instructions carefully to ensure easy application and optimal wall adhesion.**

**Please clean your walls with water and cloth only and allow to completely dry before applying the wallpaper.**

**If the wallpaper is applied to a dirty or dusty wall, the stickiness of the adhesive will be compromised and the wallpaper may not completely adhere to your wall.**

## **IMPORTANT**

# simple shapes®

WALL DECALS | WALLPAPER | WALL ART

*For Baby, Kids, Home, and Office*



[www.simpleshapes.com](http://www.simpleshapes.com)