

ALEXIA 53" ACRYLIC ROLL TOP TUB

Cat. No.
ATRN53



L: 54"
W: 29-5/8"
H: 22-1/2"

Water depth: 17-1/2" to top of tub
Water depth: 13" to overflow
Overflow hole: 1 1/2"

The following is recommended for ATRN tubs:

- Faucets: part #4602, 4604 or 7082
- Rigid, freestanding supplies: part #4502
- Leg tub drain: part #5599

Gallon Capacity : 59
Shipping Weight: 358 lbs.
Empty Weight: 178 lbs.
Filled Weight: 671 lbs.

Features:

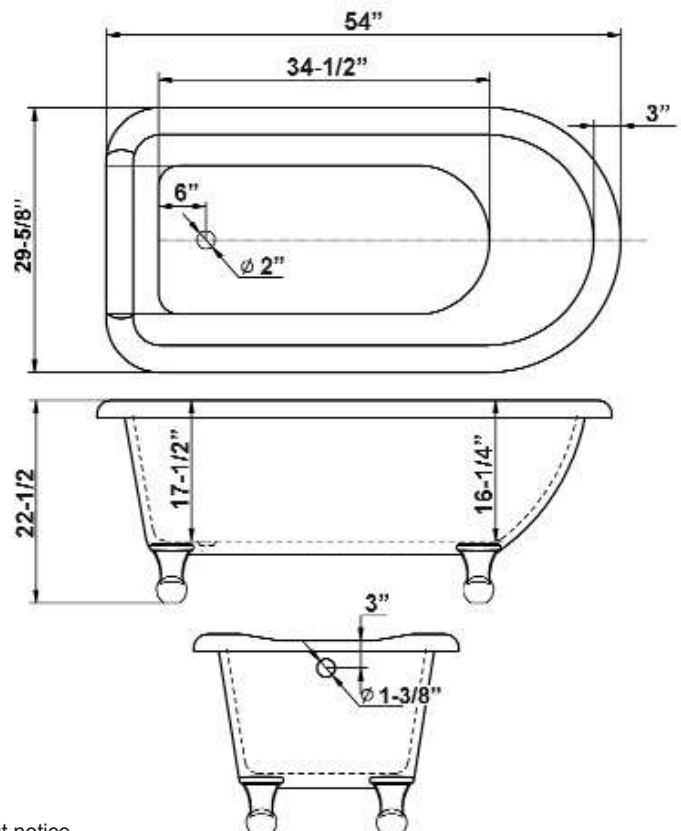
- Interior and exterior walls acrylic sheets
- Space between walls partially filled with fiberglass & resin
- No faucet holes
- Pre-drilled overflow hole
- Solid brass ball and claw feet available in 4 finishes
- Tub is thoroughly inspected before shipment
- IAPMO Certified

Foot Finishes:

BN Brushed Nickel
CP Polished Chrome
PB Polished Brass
ORB Oil Rubbed Bronze



Custom Colors Available (inside of tub is always white enamel):
Painted bathtubs are considered "special order" and are not returnable
\$160 Bisque or Black \$250 Designer Color



Dimensions of fixture are nominal and specifications subject to change without notice.