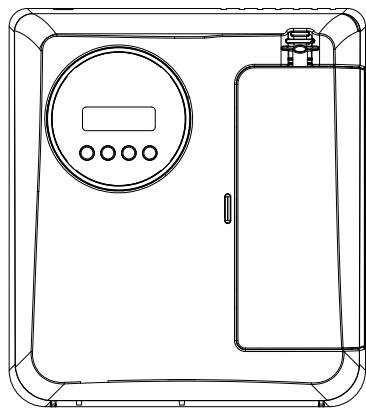


Wall-mounted Scent Diffuser



User Manual DSQ3010B

Introduction

DSQ3010B Aroma Diffusion System adopts cold air atomization principle, which is combined high-tech quality.

Applicability:
elegant appearance, easy to install, stable performance.

Intelligence:
adopting microcomputer system to control the working time and aroma concentration based on your setting.

Reliability:
leading proprietary technology, the patented technology of micron atomization makes the aroma to spread quickly in the interior space, more fresh and lasting.

Attentions

Please read this manual in detail before using the device and keep it carefully.

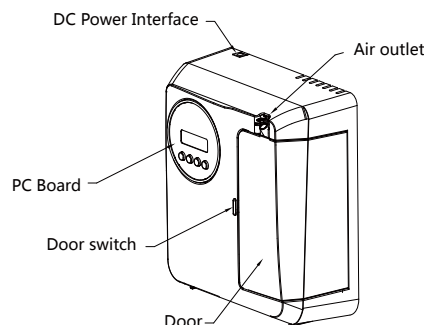
Please do not use overloaded power socket, broken wire and charger. It may endanger your safety and cause a fire, please replace in time if it happens.

Please do not try to open the shell of the device. Please contact seller timely if any abnormality.

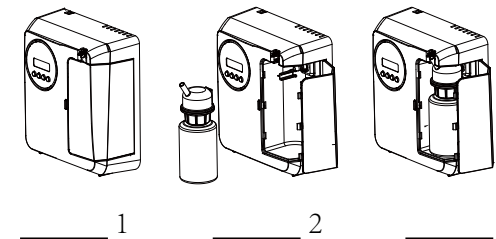
Please do not invert the device after filling oil in case of leaking and causing damage.

Parameters

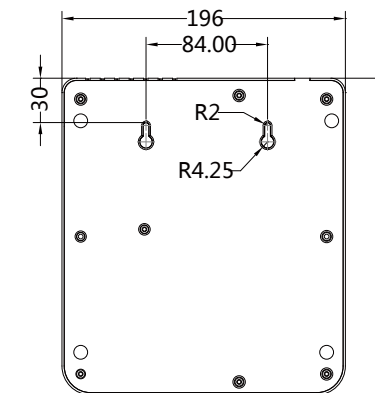
Model	DSQ3010B
Size	W196*D90*H219 (mm)
Capacity	200ml
N.W	0.81kg
Coverage	300m ³
Voltage	DC12V
Power	5.8W
Noise	≤45dba



Installation



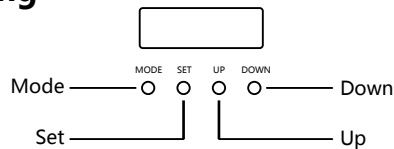
1. Press door switch to open front door;
2. Take out oil canister & atomizer, then fill canister with fragrance oil;
3. Assemble oil canister and atomizer, then embed it into device;
4. Close the door, power on and set working time to start.



(Dimension of punching (mm))

(Diagram of Wall-mounted Installation)

Setting



1. Turn power on, the LCD displays the current hour, minutes, and work day. It also shows the current working state as WORK ON, PAUSE ON, or PAUSE OFF.
2. Press [SET], then press [UP] or [DOWN] to adjust the hour, minute, or work days setting.
3. Press [MODE] to set device's work period and WORK/PAUSE time. For example,
 - A. Press [MODE] for one time, that shows to adjust ON time of first work period. Then press [SET] [UP] [DOWN], to adjust the hour, minute and work days respectively.
 - B. Press [MODE] for second time, that shows to adjust OFF time of first work period. Then press [SET] [UP] [DOWN] to adjust the hour, minute and work days respectively.
 - C. Press [MODE] for third time, to set the WORK time within 5 - 300 seconds by pressing [UP] / [DOWN].
 - D. Press [MODE] for fourth time, to set the PAUSE time within 5 - 300 seconds by pressing [UP] / [DOWN].
4. Please repeat the above steps to set 2nd / 3rd / 4th work periods.
5. Reset the default setting by pressing [MODE] for 10 seconds.

Default Setting:
The ON time of 1ST work period is 8:00, OFF time is 22:00.
WORK time is 60 seconds, PAUSE time is 60 seconds.
The 2nd / 3rd /4th work periods stay in blank.

Accessories

Name	Diagram
Atomizer core	
Power adapter	
PE seal ring	
User manual	
M3 screws	

Malfunction Debugging

Please try to solve the problem as below before fixing the machine.

Breakdown	Solution
No spray	- Check if power supply is energized. - Check if device is not in work period. - Check if air pump works or not, and replace the atomizer core. - Check if seal ring is damaged or fall off, and if oil pipe is blocked or fall off.
Spray gets weak	- Check if seal ring is damaged. - Check if atomizer core gets blocked. - Check if atomizer core gets loose, or replace the atomizer core.
Oil leakage	- Check if atomizer head is damaged. - Check if seal ring gets damaged or need replacement. - Check if oil canister connects to atomizer head closely.
Abnormal noise	- Air pump is loose, please fix it correctly. - Air pump is damaged, please replace it with a new one.

Maintenance

In order to ensure the best diffusing effect, please check and maintain the device regularly as the following steps.

1. Unlock the door and take out oil canister which is spent.
2. Fill some alcohol into the canister and clean it.
3. Install the canister on the device filling with alcohol and make the device stay in working status for 5-10 minutes.
4. Turn off the power when finishing cleaning.
5. Take out the canister and fill with fragrance oil and install on the device, then lock the door to finish the maintenance process.

After-sales Service

The warranty is 1 year from the date of sale, not including device shell, electric wires, outer pipe and the other vulnerable parts, as well as the damage caused by human or accident. Permanent maintaining for value will be provided if the machine exceed the warranty.

If there is any issue of after-sales, please contact authorized sales service in corresponding area, or contact Sales Center directly.

Warranty Card

This card is the warranty for device's quality, please fill it with actual information.

Warranty card one	
Start Date of Warranty Period	
Malfunction Description	
Date of Verify	
Maintenance Result	
Maintainer's Signature	
Warranty card two	
Start Date of Warranty Period	
Malfunction Description	
Date of Verify	
Maintenance Result	
Maintainer's Signature	