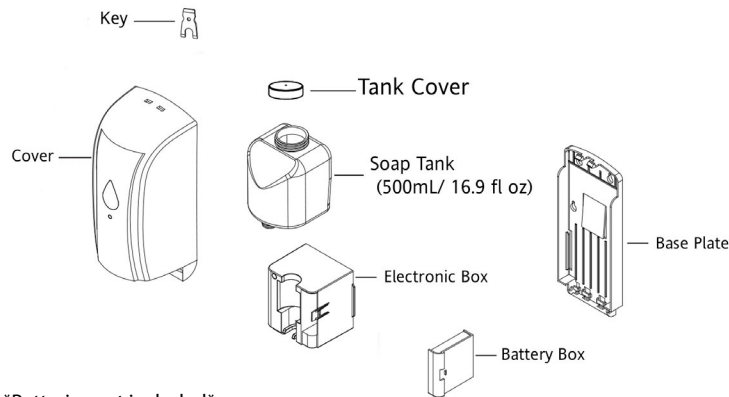




AUTO MULTI-FUNCTION DISPENSER OPERATION INSTRUCTIONS

FOR MODELS: WHSD110; WHSD210; WHSD310

MATERIALS INCLUDED



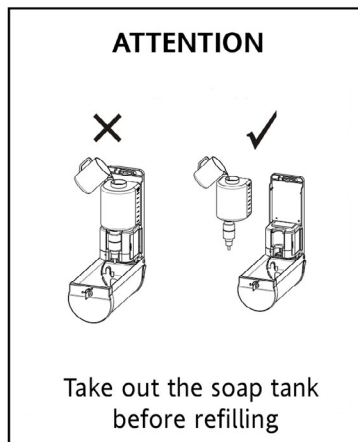
Batteries not included

KIT	
Key x1	
Plastic Anchor x4	
Mounting Screw x4	
Mounting Template x1	
Self-Adhesive Tape x2	

WHSDP-0016: Liquid Pump
WHSDP-0017: Foam Pump
WHSDP-0018: Spray Pump
Replacement interchangeable cartridges sold separately

Soap Tank Capacity: 500mL/ 16.9 fl oz
Soap Pump Life: 100,000 cycles

OPERATION INSTRUCTIONS



1. Open housing with included security key by inserting it into the openings on the top and pushing down.
2. Open cover on battery compartment; remove the battery box.
3. Install four AA Batteries into the correct slots.
4. Reinstall battery box and close the compartment.
5. Retrieve a disposable soap cartridge. Remove, clean out and refill the soap tank with the correct viscosity liquid soap.
6. Ensure that the soap tank cover is closed, air vent hole is open, the nozzle is not clogged and that the soap container is clean with no spill-over and not leaking. Install tank back into the dispenser.
7. Close the housing cover.
8. See that the LED light flashes blue four times. This indicates the detection of an environment. If there is no object under the dispenser, the default environment sensor range is 3- 4in. If there is an object within that range, the sensor will automatically reset the sensing distance to a proportionally acceptable height.

- TO CHECK IF THE BATTERY POWER IS LOW:**
1. Open and remove the soap tank.
 2. Press/push up the cover safety interlock switch (silver stem on the bottom). Click and hold.
 3. See if the LED light is lit blue and then flashes four times. This indicates proper operation stand-by condition and battery charge level.
 4. Continuous flashing indicates the need to replace the batteries.

CAUTION: Installing incorrect batteries may cause malfunction.

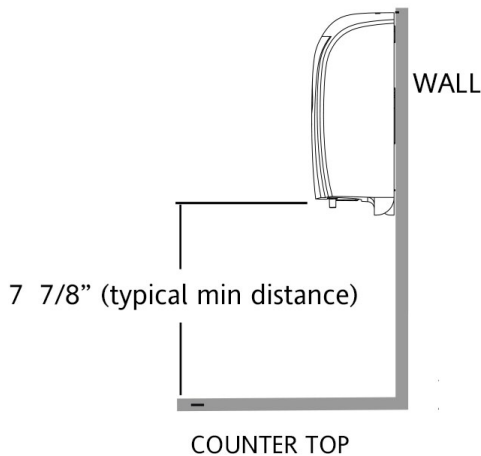
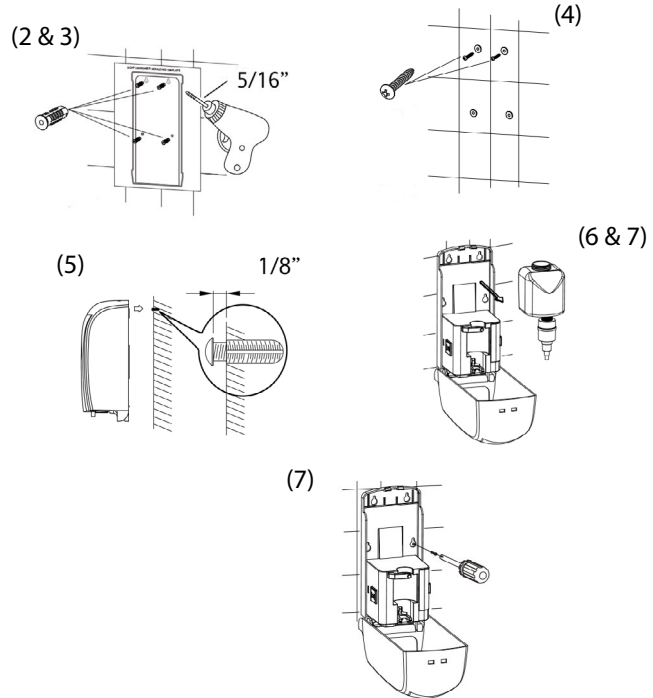




AUTO MULTI-FUNCTION DISPENSER INSTALLATION INSTRUCTIONS

INSTALLATION STEPS

- TILE OR DRY-WALL:**
1. Tape the installation template at the desired location.
 2. Drill four holes at the marked locations.
 3. Insert four plastic anchors in each of the drilled holes. Remove template.
 4. Insert two of the supplied screws into the top plastic anchors. Do not tighten all the way; leave about 1/8" of space between screws and the wall.
 5. Hang the dispenser on the two top screws through the keyhole slots on the backplate.
 6. Use key to unlock and pull forward the housing cover.
 7. Remove soap tank and lock dispenser to the wall. Insert the bottom two screws through the key-hole slots on the bottom of the back plate and into the anchors. Tighten all screws completely.



- ADHESIVE ON MIRROR:**
1. Clean mounting surface with isopropyl alcohol.
 2. Mark outline of dispenser on mirror with masking tape.
 3. Remove paper liners from self-adhesive pads on dispenser backplate.
 4. Place unit on mounting surface with even steady pressure. Hold for one minute.
 5. Let the tape cure for 10 hours before filling tank/using the dispenser.

IMPORTANT INFORMATION

1. Three different types of soap pumps can be used: Liquid, Foam or Spray. When changing between pumps, be sure to clean the tank thoroughly before refilling. Deposits of old soap will lead to malfunction. The soap pump may become jammed when the wrong type of soap is used.
2. Do not dilute foam soap unless it is made from concentrate and do not use soap containing abrasive chemicals.
3. Keep away from running water. Exposing the dispenser or any of its parts directly to water will cause it to short circuit.
4. Do not aim or reflect a bright light on the sensor from below.
5. Excluding battery replacement, do not attempt any repair work. Contact for assistance.

Have Questions? Contact Us At:
support@whitehauscollection.com | Phone: 800-527-6690

