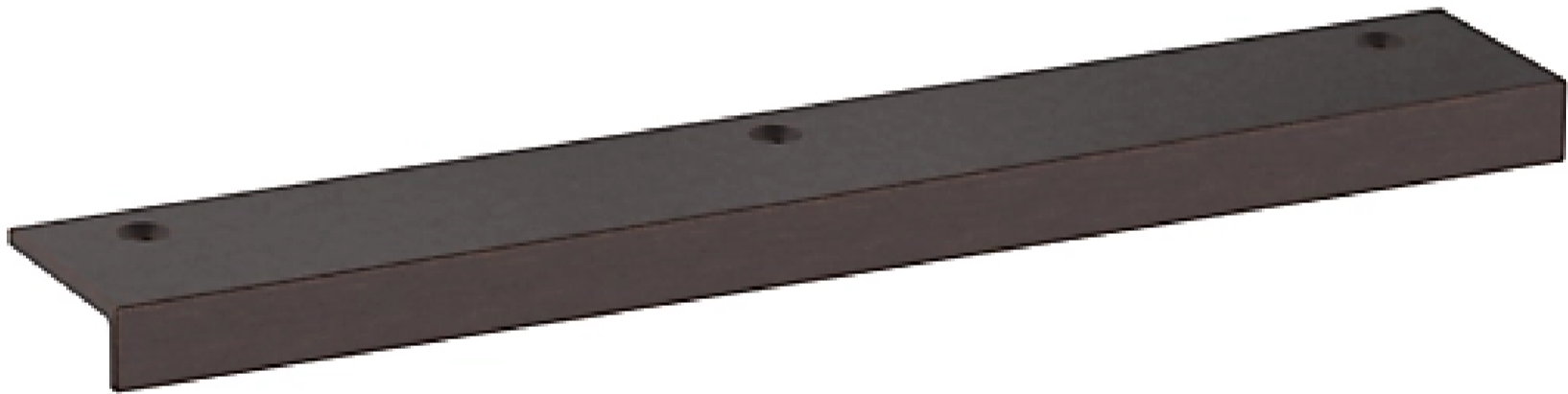


4622 EDGE PULL

6" CTC



SPECIFICATIONS

STYLE	Contemporary
PROJECTION	1.125

4622 EDGE PULL

6" CTC



ESTATE PORTFOLIO

Model Number:
4622.112.BIN

Key Features

- ✓ This family is available in a 2", 4", and 6"
- ✓ Solid brass construction, feeling the difference in quality in every piece of cabinet hardware.
- ✓ Venetian Bronze is hand-relieved, meaning each piece is unique and hand designed, it is created to reveal unique highlights and provide a warm complement to the design.
- ✓ Mounting Hardware included

FINISHES OPTIONS



Satin Nickel - 150, US15



Lifetime (PVD) Polished Nickel - 055



Polished Chrome - 260



Lifetime (PVD) Polished Brass - 003



Lifetime (PVD) Satin Brass - 044



Satin Black - 190



Venetian Bronze - 112, 11P



Non-lacquered Brass - 031

all measurements in inches

SPECIFICATIONS

STYLE Contemporary

PROJECTION 1.125