

Shampoo Chair Instruction

SPARE PARTS LIST (Notice : Shampoo chair requires 2 boxes in total)

1/2 Main Components

Ax1 Chair backrest	Bx1 Chair Cushion
Cx1 Chair Base 1	Dx2 Chair Arm
Ex1 Chair Base 2	Fx1 Shampoo Holder
Gx1 Neck Pillow	Hx1 Head Holder

1/2 Accessories

Ix11	Jx2	Kx17	AAx2
Lx13	Mx4	Nx4	
Ox4	Px6	Qx4	

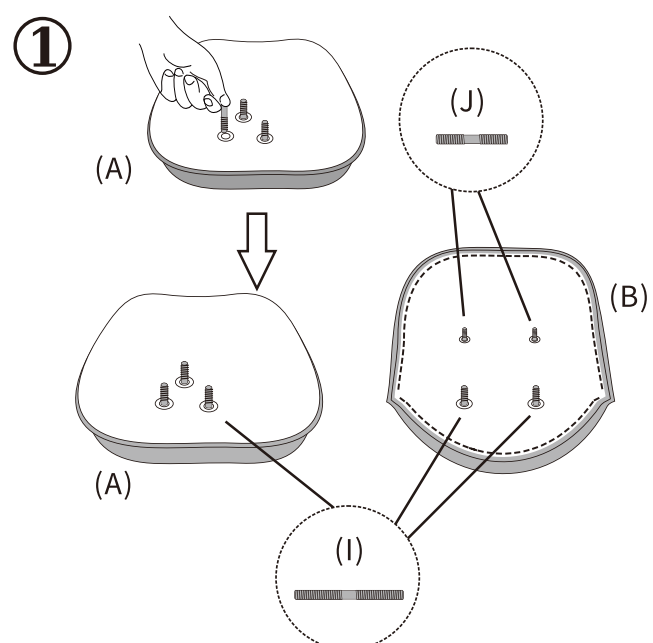
2/2 Main Component

Rx1 Basin Deck

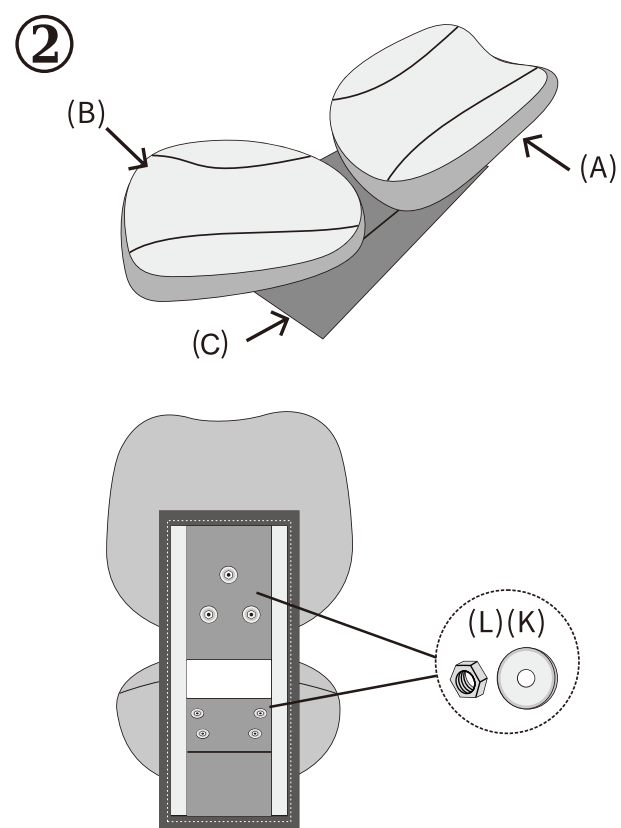
2/2 Accessories

Sx1 Mixed Water Inlet	Tx1 Shower Head	Ux1 Shower Head Pipe	V Rubber washer
Wx1 Valve	Xx1 Braided Hose	Yx1 Drainer Hose	V-1
			V-2
			V-3
		Zx1 Drain Opening	

Installation Steps

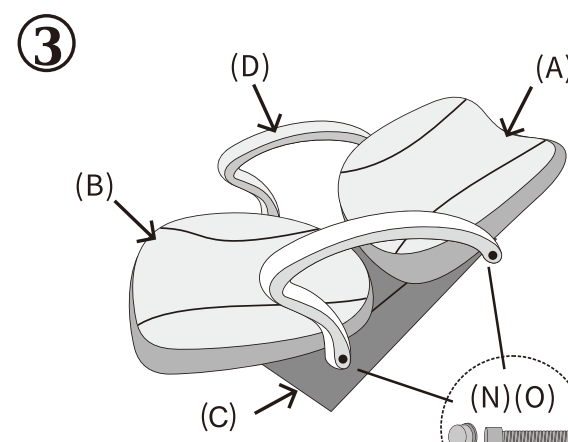


1. Tight (I) Screws fix on the back of Chair Backrest (A), Then Fix (J) Screws and (I) screws on the back of Chair Cushion (B) according above operation.

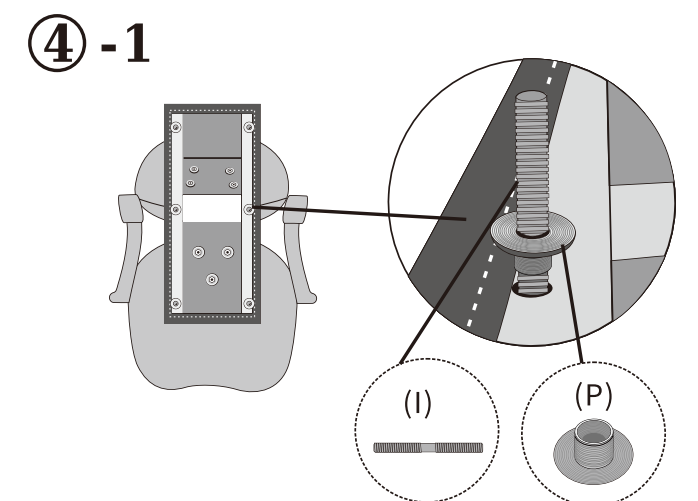


2. Place (B) and (A) on (C), then use (L) and (K) make them together.

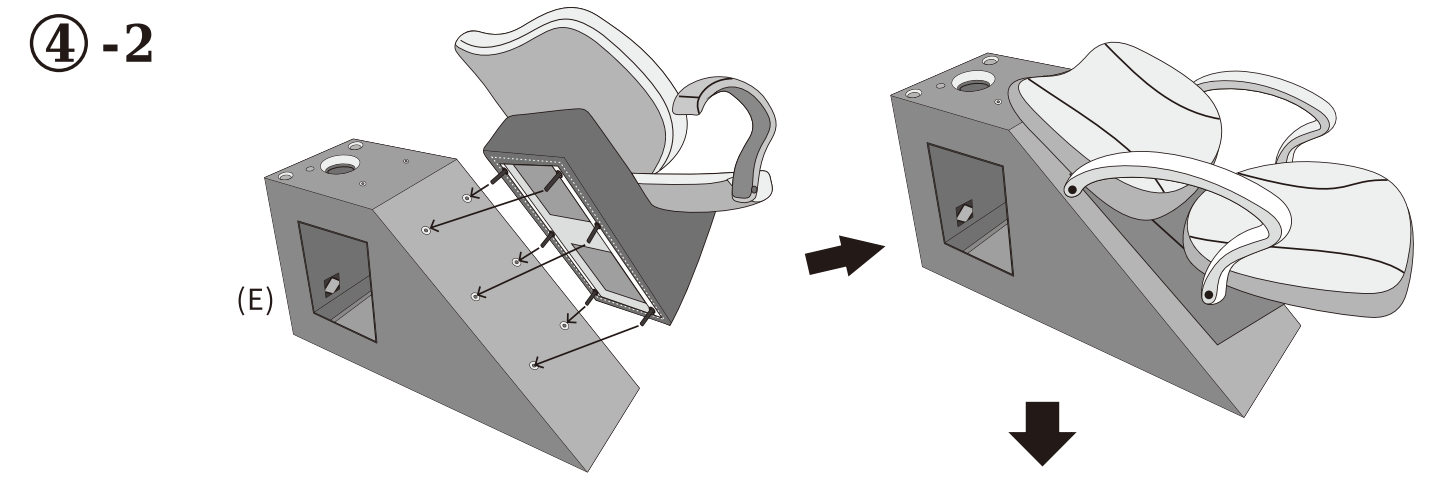
Page 1



3. Fix Chair arm by using (O), then use (N) to cover the holes of screws.

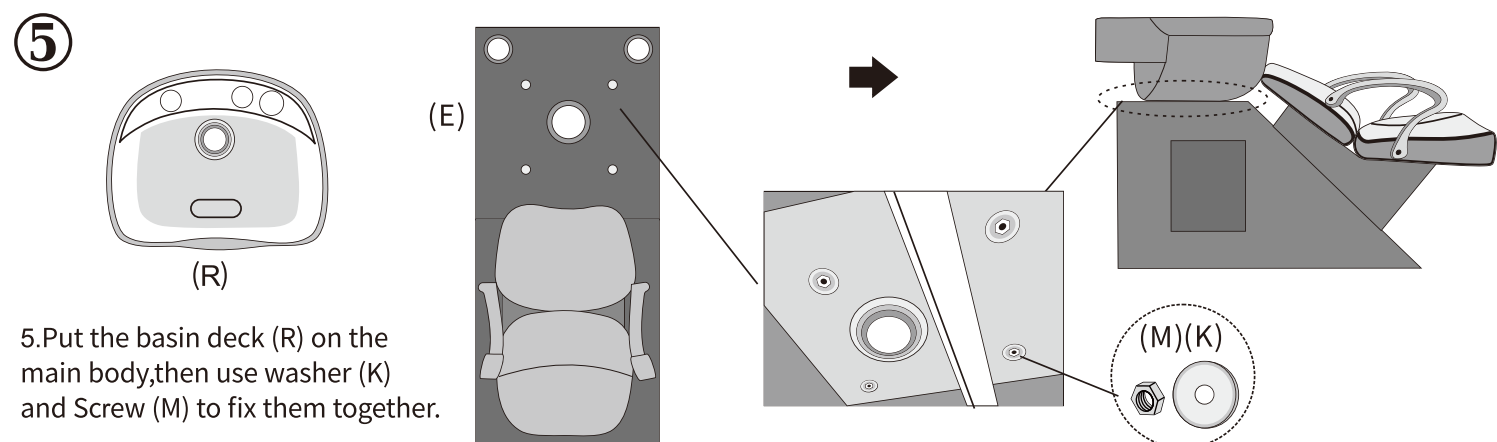


4-1. First Use (I) and (P) on the back of Chair base 1 (C).

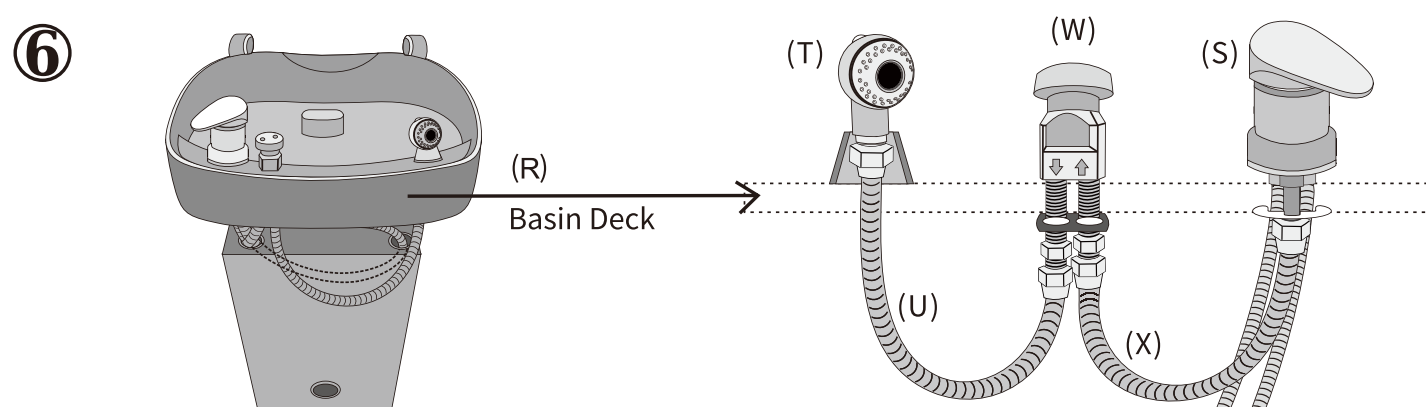


4-2. Then place the whole main body on chair base 2 (E), all holes must be lined with screws. At last use washer (K) and Screw nut (L) to fix them together.

Page 2



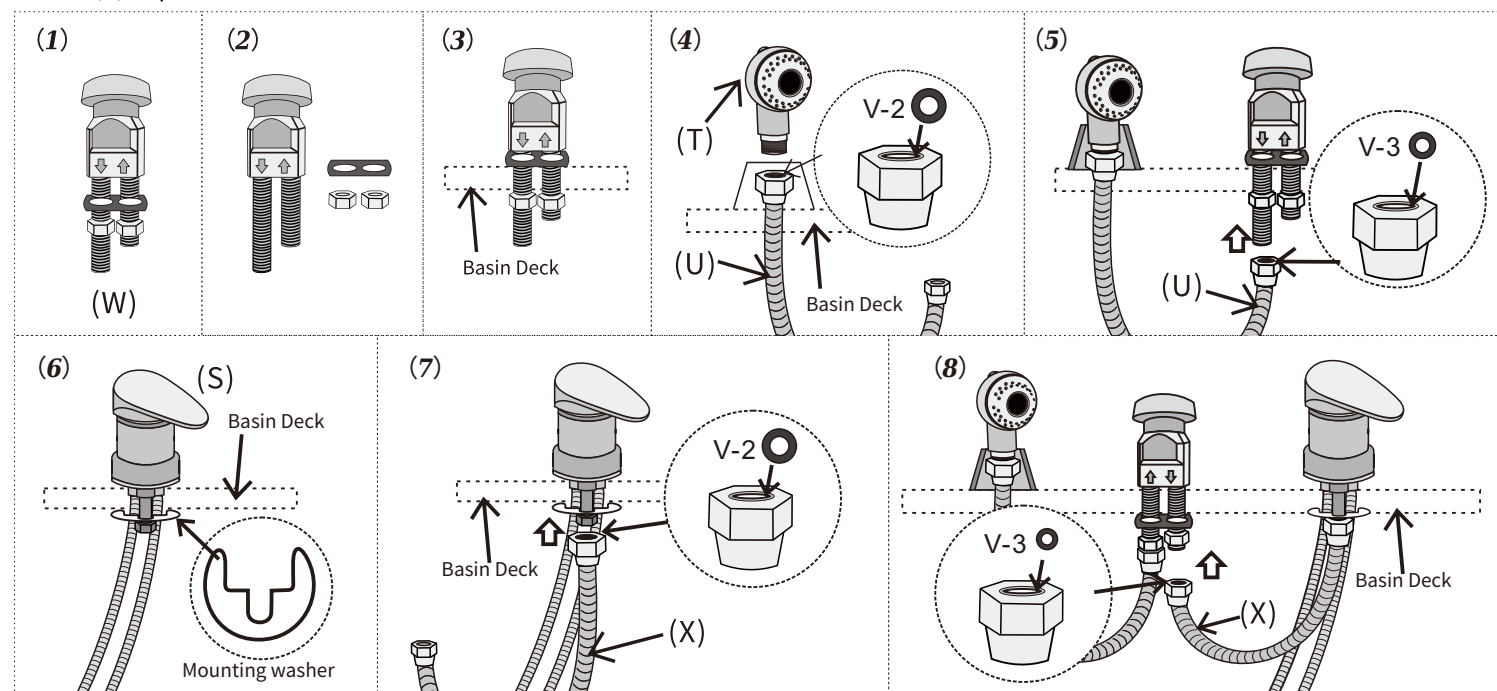
5. Put the basin deck (R) on the main body, then use washer (K) and Screw (M) to fix them together.



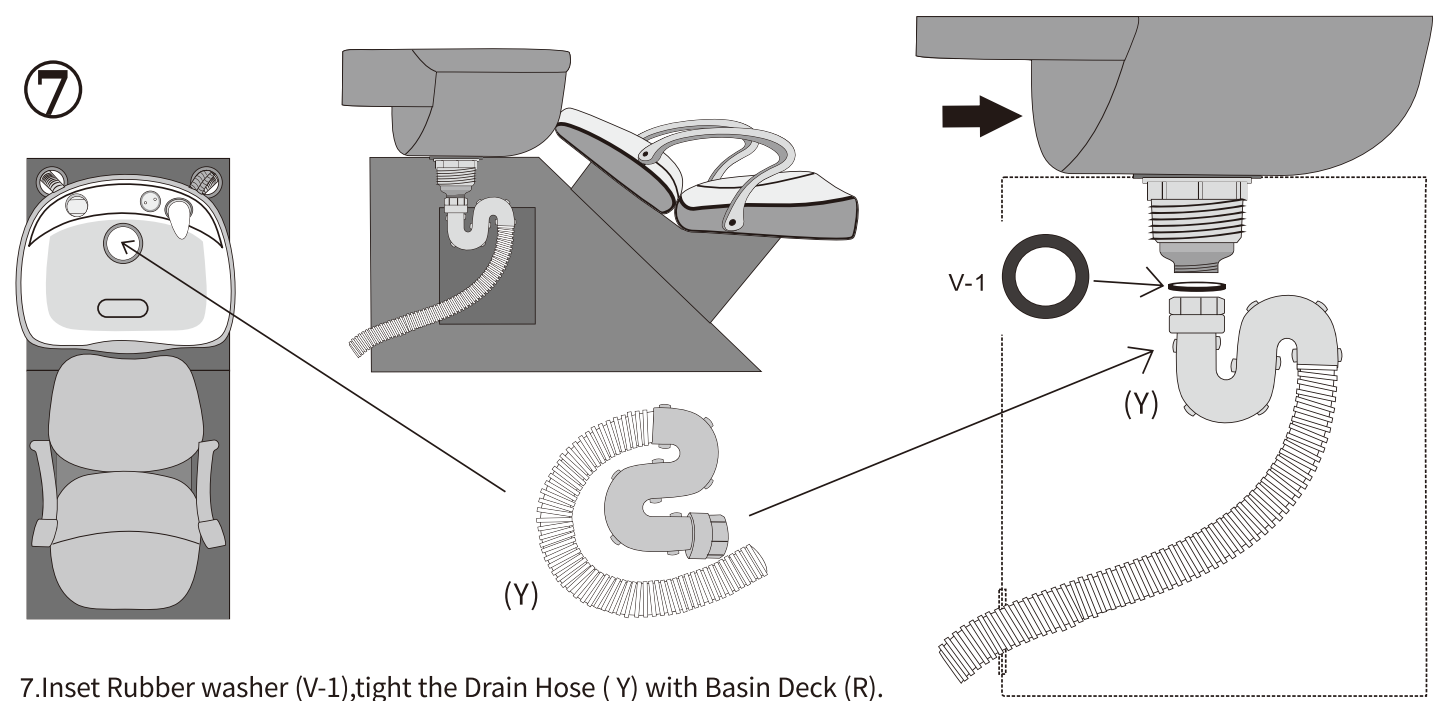
6-1. Screw down the two nuts of Valve (these nuts are self-contained), then tight the Valve (W) and Basin Deck (R) with these two self-contained nuts.

6-2. Inset Rubber washer (V-2) then connect the Shower Head Pipe (U) with Shower Head (T), put the Shower Head with pipe in to Basin Deck, And at the last, connect the end side of Shower Head pipe (U) with Valve (W) as picture shows.

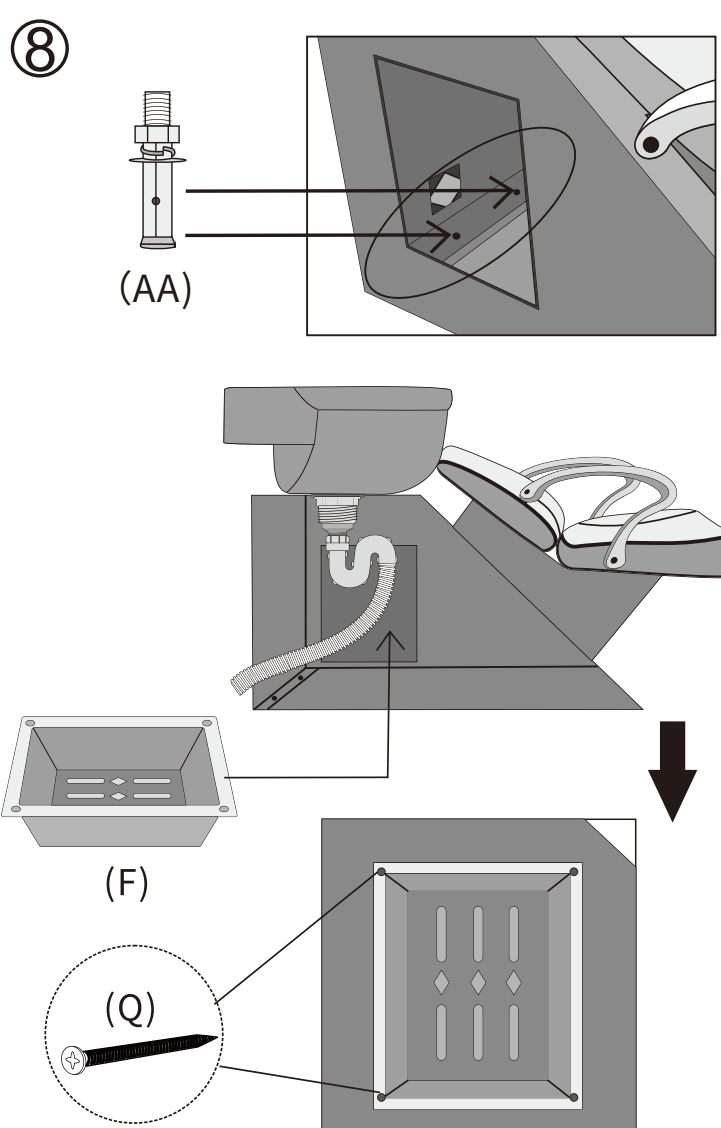
6-3. Take out the mounting Washer (As Picture show, which is Mixed Water Inlet self-contained), then fix the Mixed Water Inlet (S) and Basin Deck (R) with this self-contained mounting washer. Last, connect the Mixed Water Inlet (S) with Valve (W) via Braided Hose (X), with inserting rubber washers (V-2, V-3) on the both end side of Braided Hose (X) as pictures show.



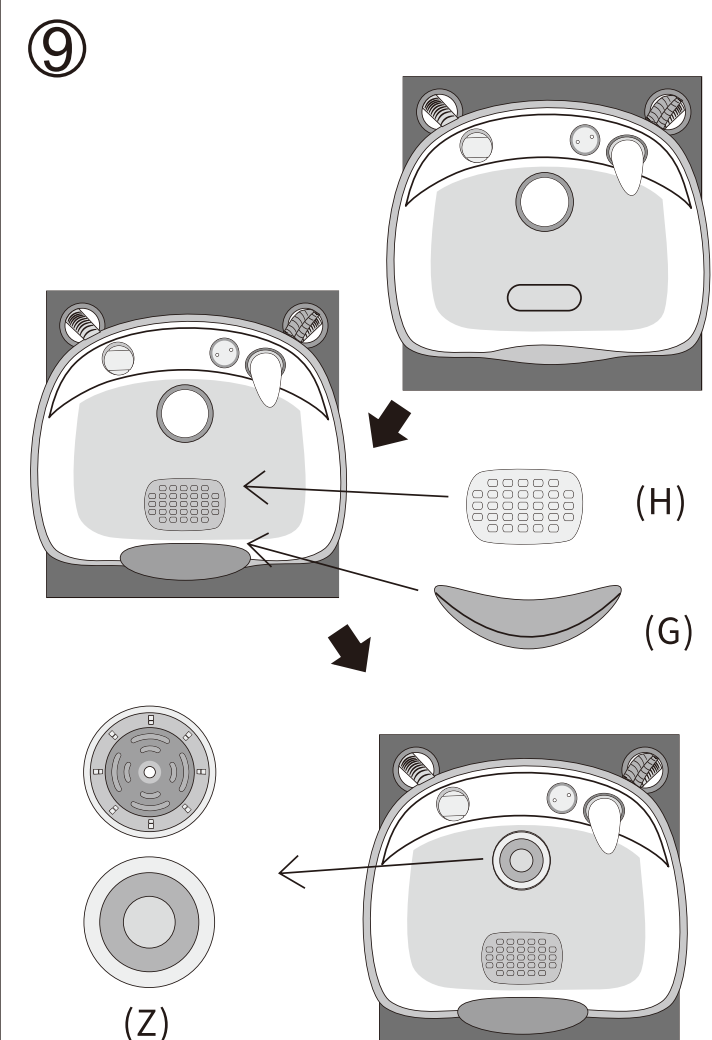
Page 3



7. Inset Rubber washer (V-1), tight the Drain Hose (Y) with Basin Deck (R).



8. Fix Shampoo Holder (F) by using screw (Q). (If necessary please add another step between 7 and 8 steps, use (AA) to nail shampoo chair on ground as picture.)



9. Set the Neck Pillow (G), Head Holder (H) and Drain Opening (Z) at the right position.

Page 4