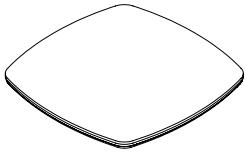


# ASSEMBLY INSTRUCTIONS

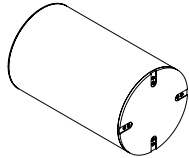
## END TABLE

**A** Top Panel



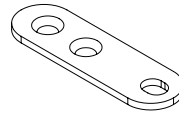
1PC

**B** Column Base



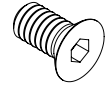
1PC

**C** Metal Bracket  
80 x 25 x 3mm



4PCS

**D** Bolt  
Ø1/4" x 1/2" x Ø11mm



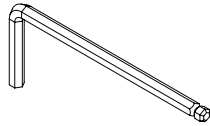
8PCS

**E** Bolt  
Ø1/4" x 5/8" x Ø13mm

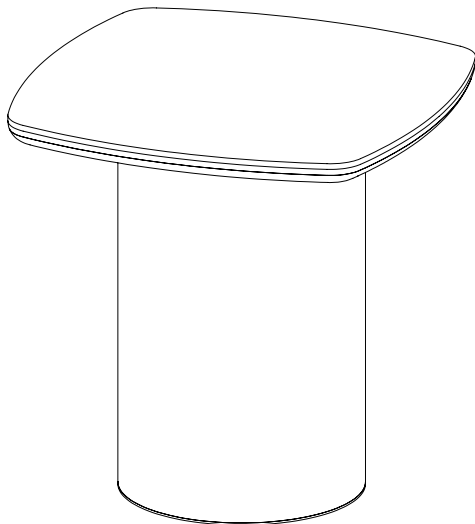


4PCS

**F** Allen Key  
M4

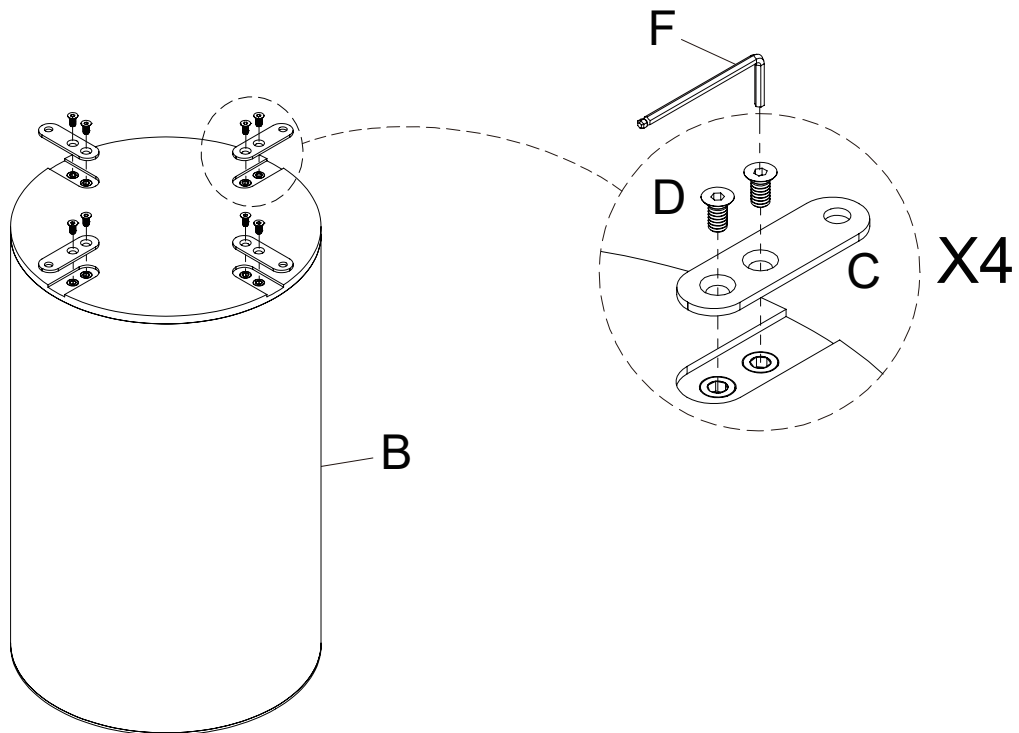


1PC

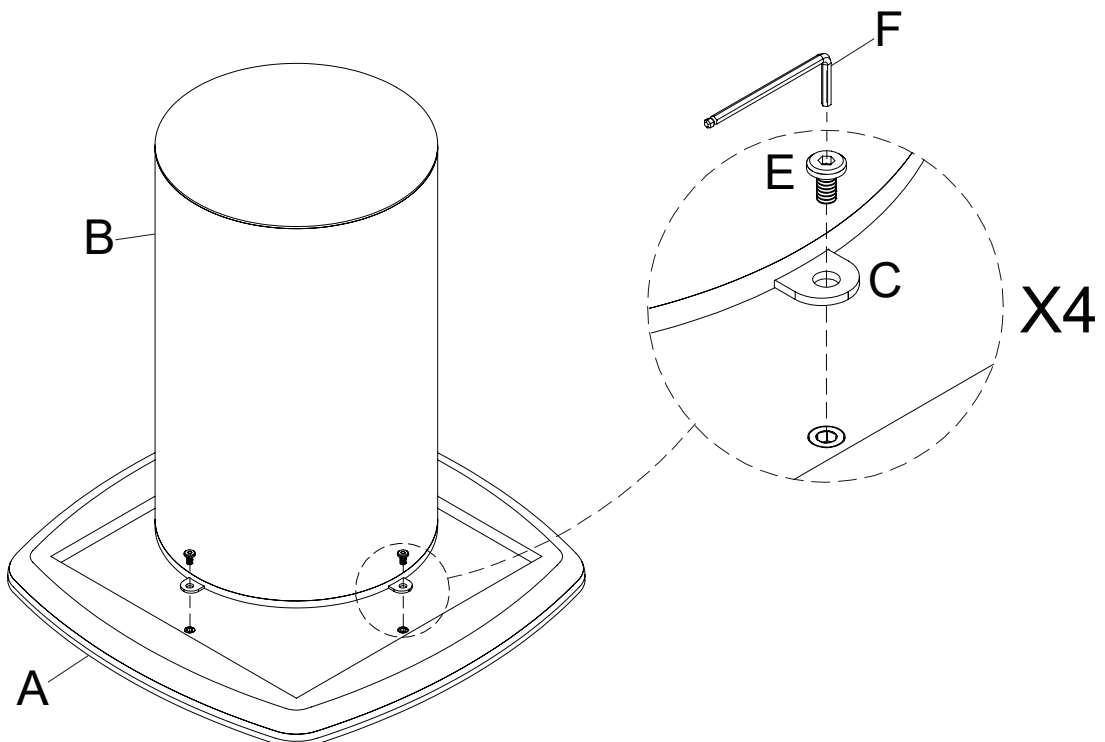


This page lists all the contents included in the box. Please take the time to identify the hardware as well as the individual components to this product. As you unpack and prepare for assembly, place the contents on a carpeted or padded area to protect them from damage.

- 
- 1** Attach the Metal Bracket (C) to the Column Base (B) using Bolt (D) with the Allen Key (F).



- 
- 2** Attach the Column Base (B) to the Top Panel (A) using Bolt (E) through the Metal Bracket (C) with the Allen Key (F).



---

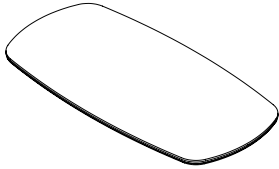
### Cleaning & Care

Treat surfaces with care. Surfaces are resistant to scratches but are not scratch resistant. Clean surfaces with a dry or damp soft cloth. Do not use abrasive cleaners. Hardware may loosen over time. Periodically check that all connections are tight.

# ASSEMBLY INSTRUCTIONS

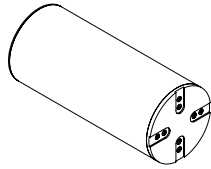
## COFFEE TABLE

**A** Top Panel



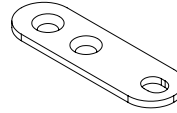
1PC

**B** Column Base



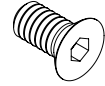
4PCS

**C** Metal Bracket  
80 x 25 x 3mm



16PCS

**D** Bolt  
Ø1/4" x 1/2" x Ø11mm



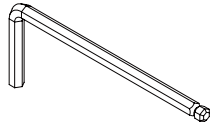
32PCS

**E** Bolt  
Ø1/4" x 5/8" x Ø13mm

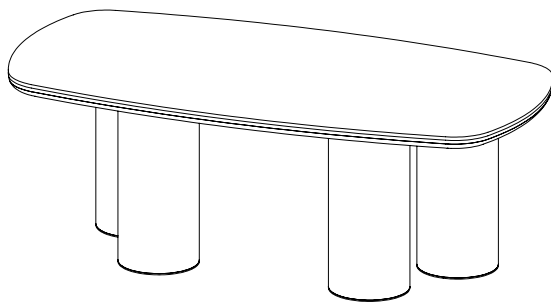


16PCS

**F** Allen Key  
M4

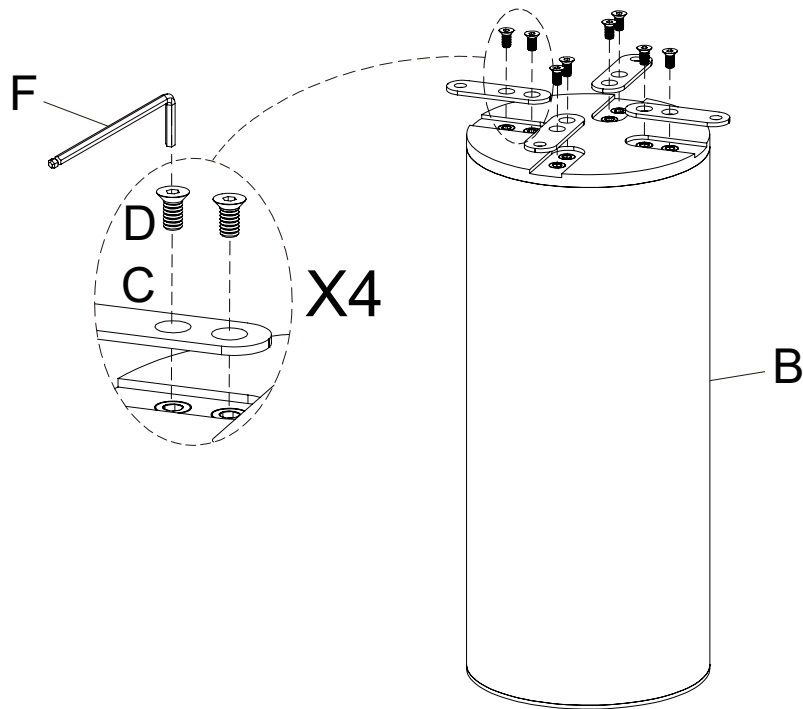


1PC

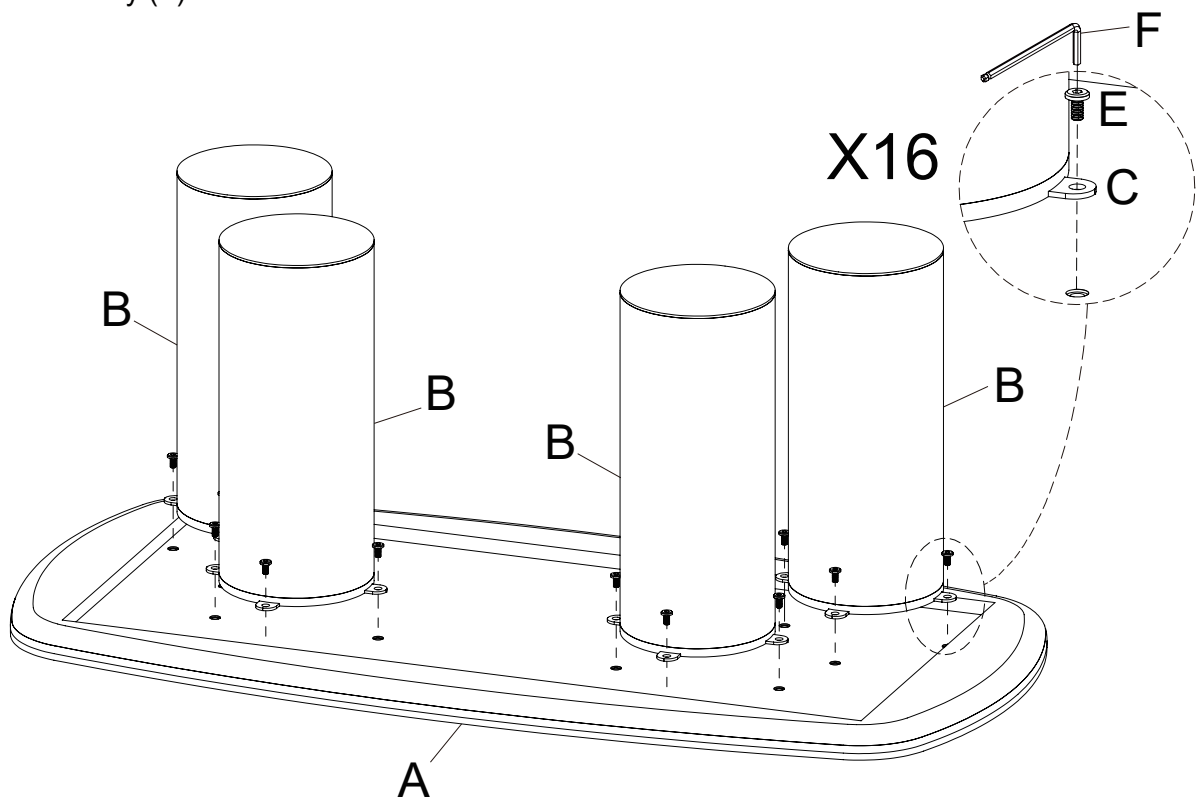


This page lists all the contents included in the box. Please take the time to identify the hardware as well as the individual components to this product. As you unpack and prepare for assembly, place the contents on a carpeted or padded area to protect them from damage.

- 1** Attach the Metal Bracket (C) to the Column Base (B) using Bolt (D) with the Allen Key (F).



- 2** Attach the Column Base (B) to the Top Panel (A) using Bolt (E) through the Metal Bracket (C) with the Allen Key (F).



### Cleaning & Care

Treat surfaces with care. Surfaces are resistant to scratches but are not scratch resistant. Clean surfaces with a dry or damp soft cloth. Do not use abrasive cleaners. Hardware may loosen over time. Periodically check that all connections are tight.