

# INSTALLATION

## Step 1

Assemble the iron bar



## Step 2

Tighten the screw



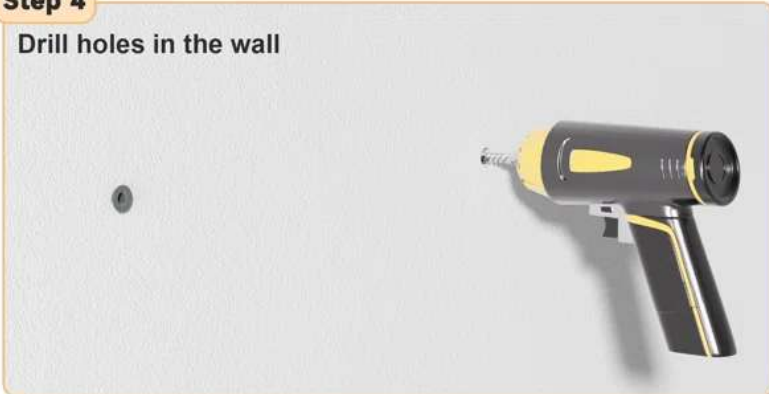
## Step 3

Attach the bar to the mirror



## Step 4

Drill holes in the wall



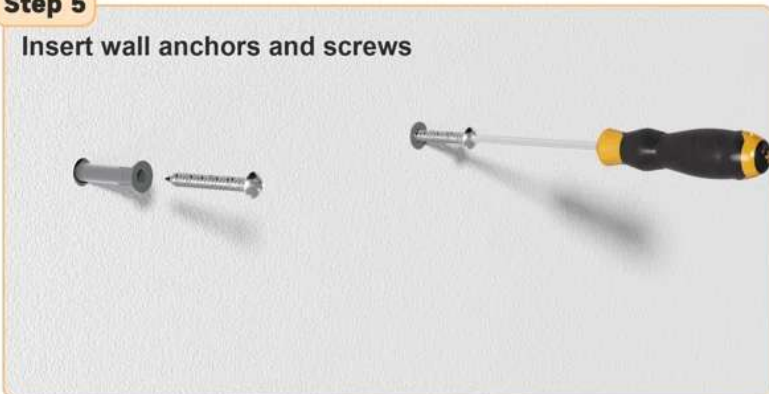
## Step 6

Hang the mirror



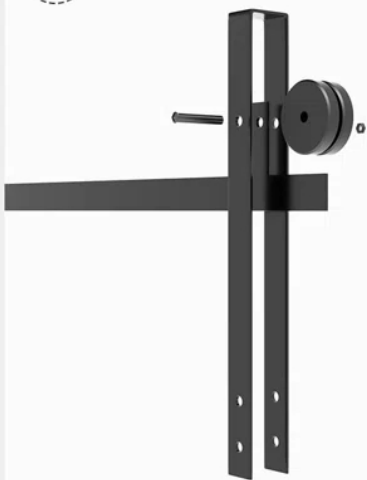
## Step 5

Insert wall anchors and screws



# INSTALLATION

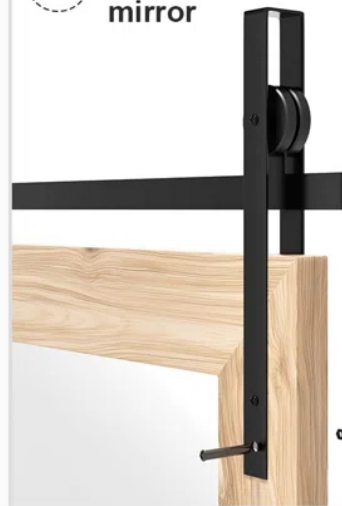
01 Assemble the iron bar



02 Tighten the screw



03 Attach the bar to the mirror



04 Drill holes in the wall



05 Insert wall anchors and screws



06 Hang the mirror

