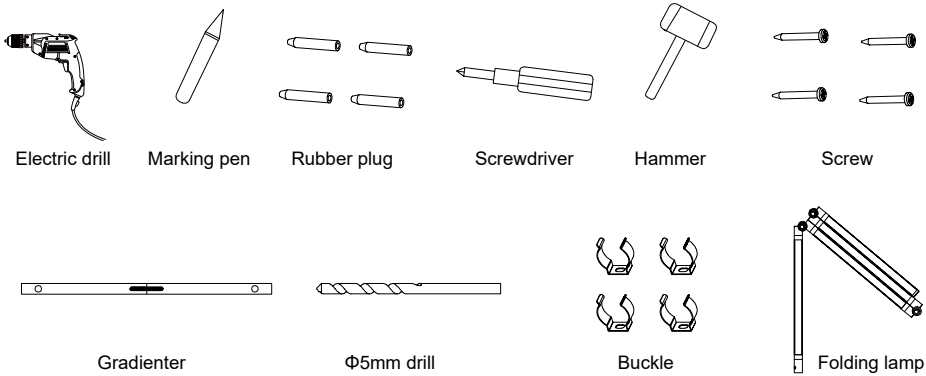


## Installation method 2

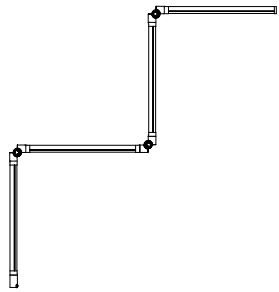
(Wall mounted)

### Prepare the following items



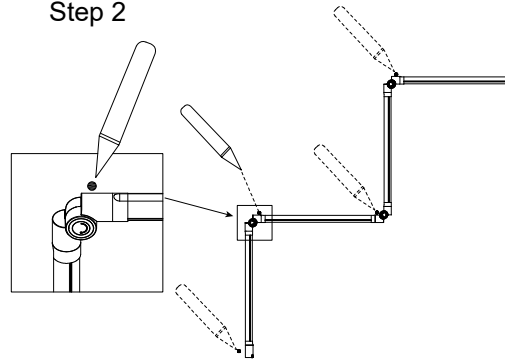
### Installation Steps

#### Step 1



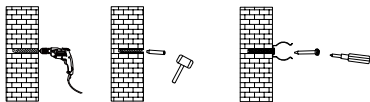
Adjust the lamp top-roper shape by hand.

#### Step 2



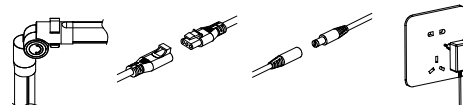
Stick the folding lamp to the wall and draw some points.

#### Step 3



Drill four holes on the four points that have been drawn with an electric drill, insert rubber plugs, and screw in screws with the buckles stuck to the wall.

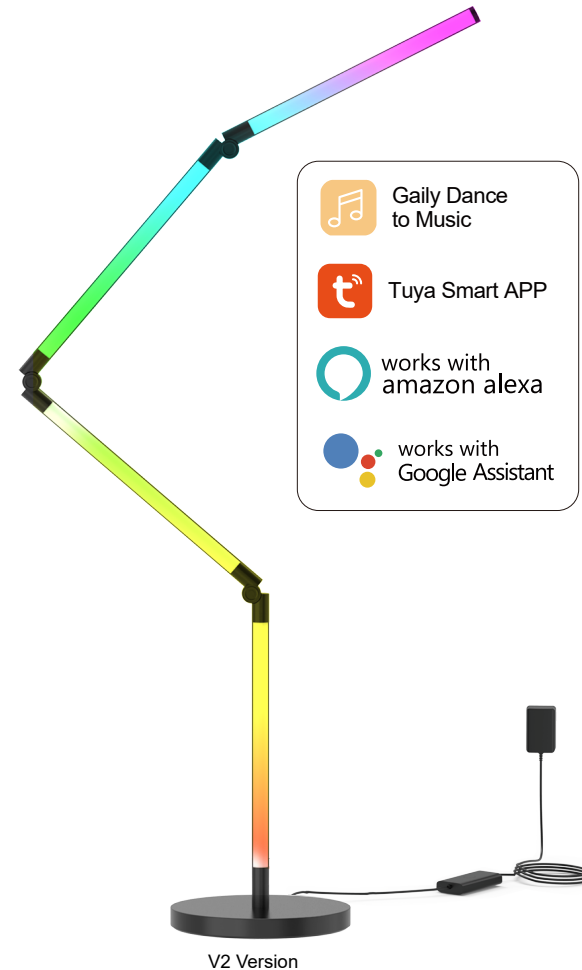
#### Step 4



Install the folding lamp in the buckle, connect the controller and connect the adapter

# FOLDABLE FLOOR LAMP

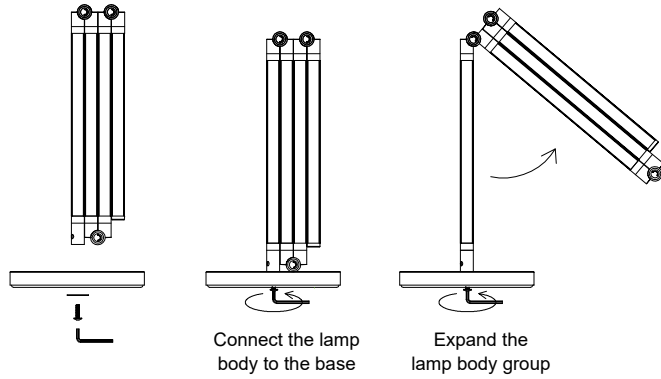
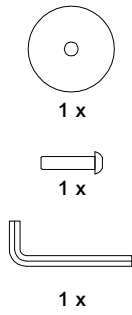
## Installation instructions



# Installation method 1

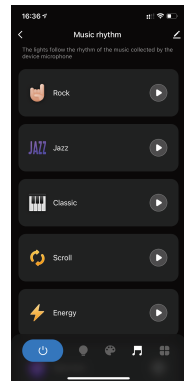
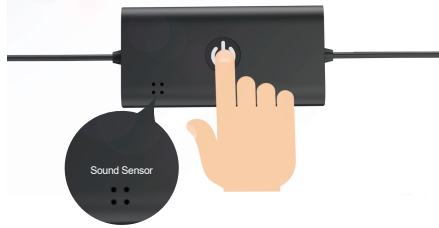
(Ground mounted)

## Prepare the following items



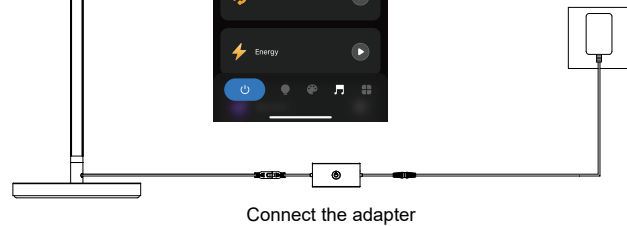
### CONTROLLER

Long press 5 seconds: folding light flashes red light (waiting for network distribution)



### LOCAL MUSIC MODE

rock, jazz, classic, scroll, energy, frequency spectrum, etc and sensitivity can be adjusted.



## Installation Steps

Step 1

180°  
The direction of the pivot shaft can be rotated 180°

The horizontal direction can be rotated left or right by 300°

Step 2

Warning: The swing joint can only be rotated 180° in the direction of the joint protrusion. It cannot be rotated in the opposite direction. Forcing the rotation may cause the swing joint to break.

YES NO

Step 3