

NOTICE

- * Please make sure that you have all parts indicated and they are in good condition before you begin assembly of this item. Refer to part list and hardware list below for guidance.
- * This item should be assembled on soft surface to prevent scratching the finish during assembly.
- * This item may require periodic tightening.
- * If you're having difficulty, our friendly Customer Care team is always here to help.

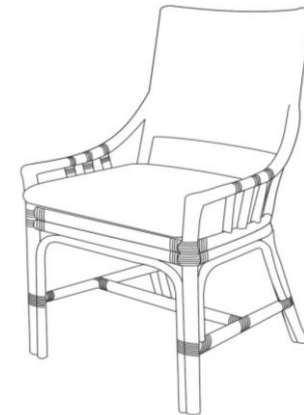
PREPARATION

- * Before beginning assembly of product, make sure all parts are present. Compare parts with package contents list and hardware content list.
- * If any part is missing or damaged, do not attempt to assemble the product.
- * Estimated Assembly Time : 10 minutes
- * Tools Required for Assembly (included) : Allen Key







CARE AND MAINTENANCE

- Spot clean using a mild water-free solvent. Only a professional cleaner should undertake a complete overall cleaning.
- The use of steam or water-based cleaners may cause excessive shrinking or staining.

Product Dimensions : 21.75 x 22.75 x 37"



Part List and Hardware List

| PIECE | DESCRIPTION | PICTURE | QUANTITY |
|-------|--------------------|---|----------|
| A | SEAT & BACK |  | 1X |
| B | LEG |  | 1X |
| C | CUSHION |  | 1X |
| HW1 | Hex Bolt 8x1x50 mm |  | 4X |
| HW2 | Flat Washer 9mm |  | 4X |
| HW3 | Key Pass |  | 1X |



Weight Capacity : 275 lbs

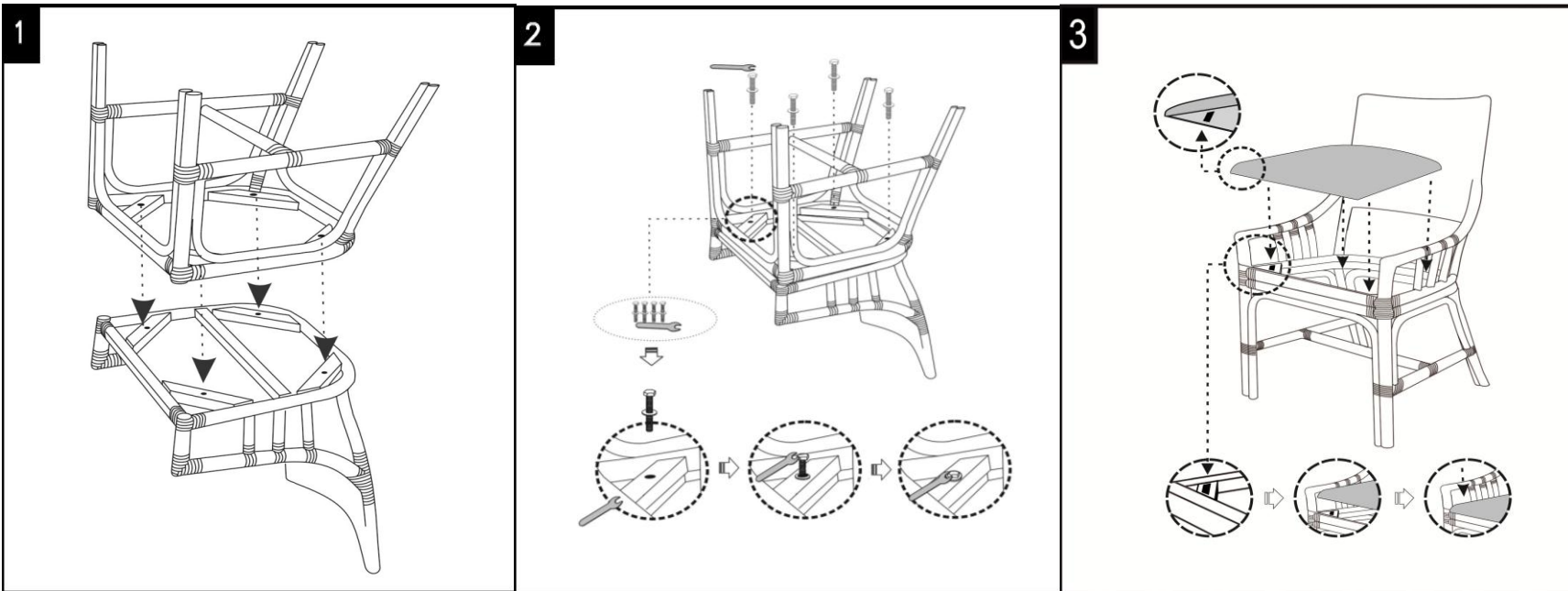
WARNING : DO NOT STAND ON CHAIR

WARNING : DO NOT OVER TORQUE BOLTS

PREPARATION

- * Before beginning assembly of product, make sure all parts are present. Compare parts with part contents list and hardware content list.
- * If any part is missing or damaged, do not attempt to assemble the product.
- * Estimated Assembly Time : 10 minutes
- * Tools Required for Assembly (included) : Allen Key
- * If you are having difficulty, our friendly Customer Care team is always here to help.
Please email customersupport@safavieh.com

Hardware is located inside the box. You can find them placed near the sign "HARDWARE INCLUDED"



STEP 1 :
Put part A upside down in smooth surface.
Carpet is better.

STEP 2 :
Assembly part A and B with Nuts and
tighten with Key Pass

STEP 3 :
Put the cushion with adhesives on
the four sides of the seat base