

PROJECT INFORMATION		
JOB NAME		TYPE
ORDERING CODE		

## SERA 4

### 4" Round Down IP65 Wall

35° - 50° BEAM		
(Note: Specifications are subject to change without notice)		
14mm COB PERFORMANCE DATA		
LED LIGHT ENGINE	NOMINAL DELIVERED LUMENS	SYSTEM WATTAGE
10LM	780LM @30K/90CRI	10W
Notes	Delivered lumens based on 35D optic. (see page 2)	



#### FEATURES

- Pre finish anodizing process for corrosive-inhibiting protection
- 2 Finish options: Anthracite or Silver
- 3000K or 4000K CCT options
- 35° - 50° Optical beam control
- Louver (Slit) accessory
- IP65 Rated

#### DIMMING AND CONTROLS

- 0-10V dimming

#### CONSTRUCTION

- Extruded aluminum housing
- Anodized and powder coat finish
- Mount to 3-1/2" to 4" octagonal or 4" square recessed junction box

#### LED

- LED: Zigen ZG6BGE34W0S
- SDCM: 3-step MacAdam Ellipse
- Lumen Maintenance:  $L_{70} > 50,000$  hrs

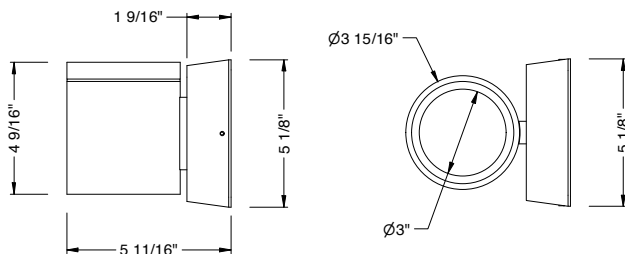
#### LISTING

- ETLus Listed to UL1598 (suitable for wet locations)
- cETL Listed to CSA C22.2 #250.0
- Warranty: 5 year limited warranty
- BUG Rating: B1 - U1 - G
- 3000k or warmer must be selected for International Dark-Sky Association approval

#### ELECTRICAL

- 120V-277V
- Ambient operating temperature -20°C/-4°F to +40°C/+104°F

#### WALL



PROJECT INFORMATION		
JOB NAME		TYPE
ORDERING CODE		

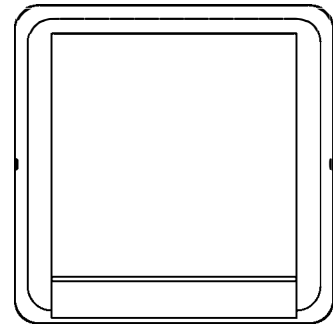
BEAM ORDERING CODE		
SERIES	EXT	exterior
TYPE	4D	4" wall down, 10W
LED	SW	standard white
DELIVERED LUMENS	10LM	780 lm
	Standard Configuration: 3000K Calculated Delivered Lumens = [Delivered Lumen Value] x [CCT Multiplier] x [Optic Multiplier]	
CCT	30K	3000K
	40K	4000K
CRI	90	90 CRI
OPTIC & LM MULTIPLIER SEE PAGE 3	35D	35° reflector (1.00)
	50D	50° reflector (1.00)
	SLT	84° x 14° louver (0.12)
FINISH	BK	anthracite
	SV	silver

BEAM ORDERING CODE		
MOUNTING OPTIONS	W <sup>2</sup>	wall mount
VOLTAGE	UNV-10V	120V-277V integrated driver, flicker free 0-10V dimming to 10%

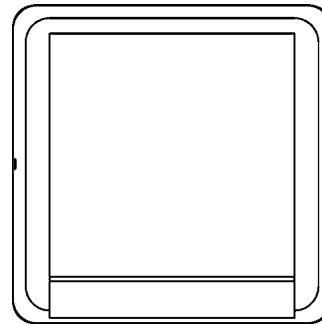
YOUR COMPLETED ORDERING CODE	
Follow the steps to specify your fixture, example:	
<b>EXT - 4D - SW - 10LM - 30K - 90 - SLT - BK - W - UNV - 10V</b>	

#### NOTES

1. Slit louver for light affect, not available with 35D/50D.
2. Up or down wall mounting. Not BUG or Dark Sky rated in up mount.



35D / 50D



SLT

**PROJECT INFORMATION**

JOB NAME		TYPE	
ORDERING CODE			

**PHOTOMETRIC DATA**

10LM CCT MULTIPLIERS	
	90CRI
3000K	1
4000K	1.1
FC Formula = CBCP / Distance <sup>2</sup>	

35D 38°	
<p>Throw Distance (ft)   Beam Diameter (ft)</p> <p>6   38   4</p> <p>8   21   6</p> <p>10   14   7</p> <p>12   10   8</p> <p>14   7   10</p> <p>Illuminance at Center (fc)</p>	
WATTS: 9.5	LPW: 81.6
LUMENS: 775	CCT: 3000K
INTENSITY	
DEGREE	CANDELA
0	1369
5	1311
15	877
25	463
35	249
45	22

50D 48°	
<p>Throw Distance (ft)   Beam Diameter (ft)</p> <p>6   28   5</p> <p>8   16   7</p> <p>10   10   9</p> <p>12   7   11</p> <p>14   5   12</p> <p>Illuminance at Center (fc)</p>	
WATTS: 9.5	LPW: 81.9
LUMENS: 778	CCT: 3000K
INTENSITY	
DEGREE	CANDELA
0	1007
5	985
15	731
25	472
35	333
45	38