
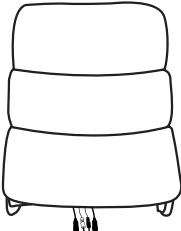
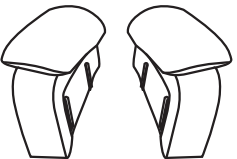
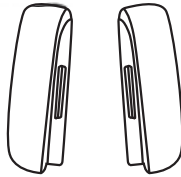

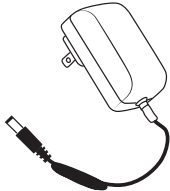
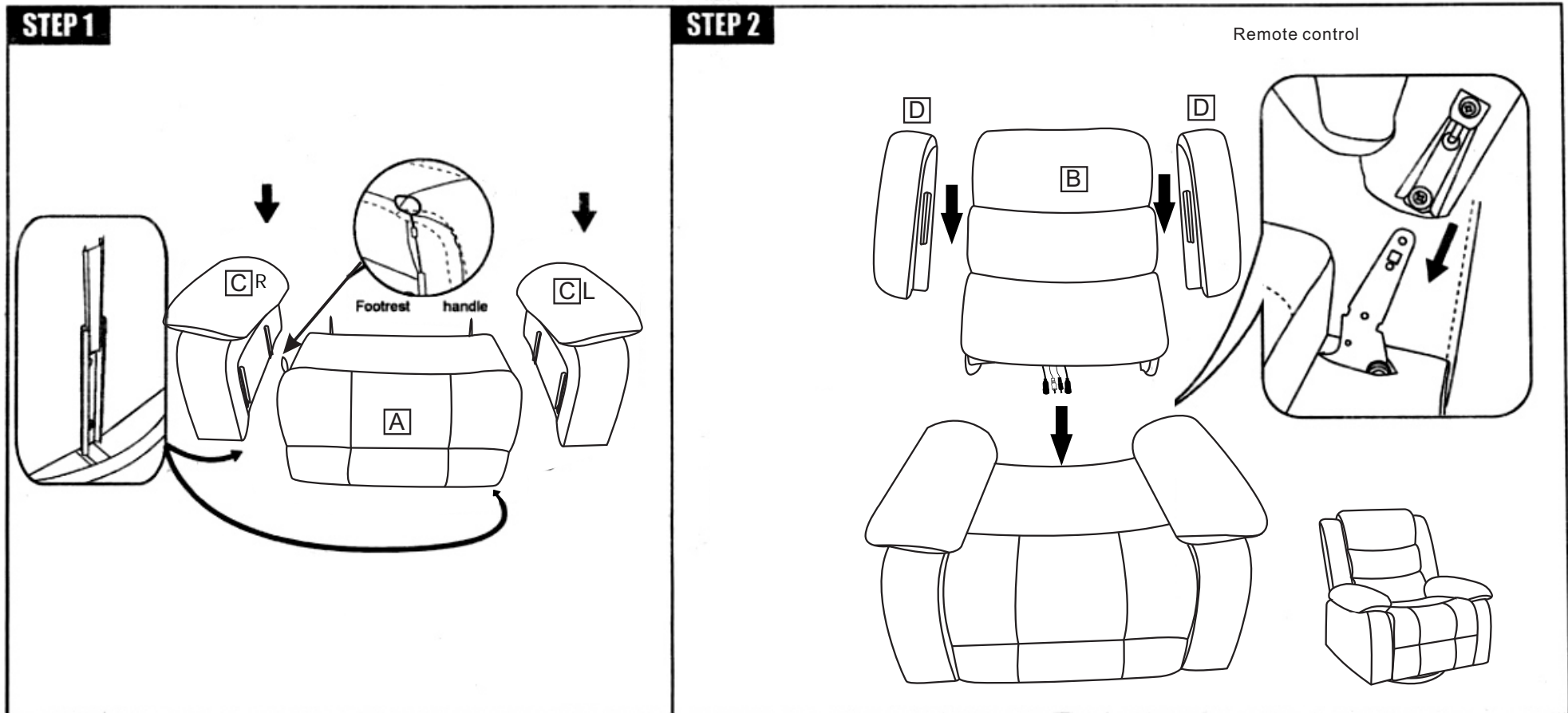


# Massage Realigner Assembly Instruction

<b>A</b> 	<b>B</b> 	<b>C</b>  R L	<b>D</b> 	<b>E</b> 	<b>F</b> 
Chair base	Backrest	Left and right armrest		Remote control	Power cord



# Massage Realiner Assembly Instruction

## STEP 3

No.1 and No.2 wire connect with the backrest and chair base.  
No.3 wire connects with backrest and power cord(D).  
No.4 wire connects with backrest and remote control(E).

NOTE: Two same color wires connect.

