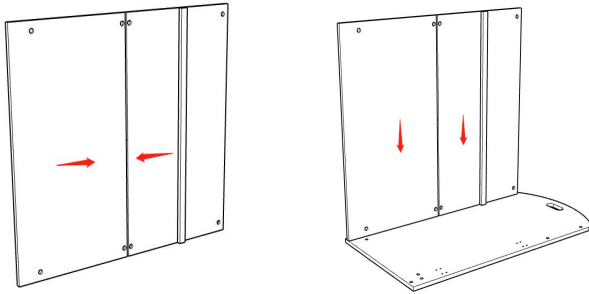
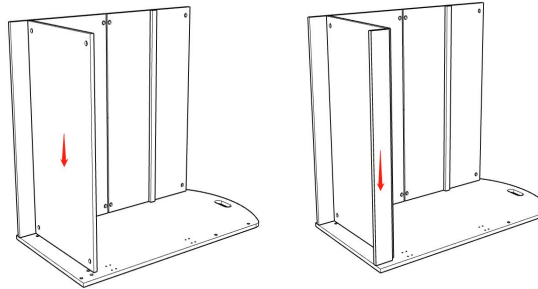


## CHANGING TABLE INSTRUCTIONS

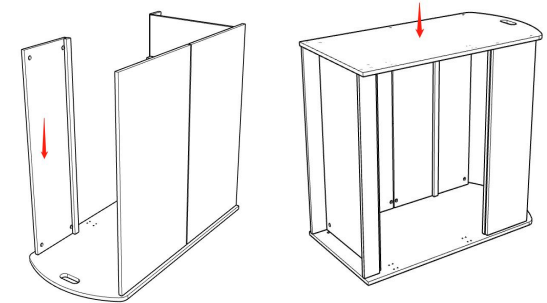
**Fasten all screws into plastic nuts. Insert all cams into Dia.15mm holes, cam arrow faces out.**



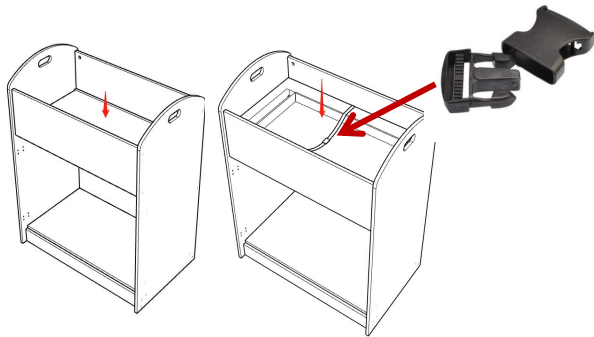
**1. Connect 2 back panels with 1 center wooden dowel. Sit back panel onto side panel, turn cams clockwise to lock. Cam holes face invisible side (inside).**



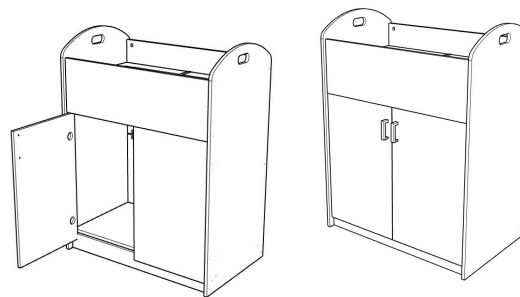
**2. Install base panel and top kick panel, turn cams clockwise to lock.**



**3. Install top front panel and other side panel.**



**4. Put top panel onto front and back panels' ribs. Put mattress onto top panel. USE safety straps to keep your baby secure.**



**5. Install door to cabinet with 2 hinges and screws, Install handles on door with screws. KEEP changing table tidy and clean, wipe with wet towel if dirty. DOUBLE CHECK changing table is stable and safe before use every time.**

## WARNING

**FALL HAZARD:** Children have suffered serious injuries after falling from changing tables. Falls can happen quickly.

**STAY** in arm's reach of your child.

**SUFFOCATION HAZARD:**

Babies have suffocated while sleeping on changing pads. Changing pads are not designed for safe sleeping.

READ all instructions before use of the changing table. KEEP instructions for future use.

DO NOT use changing table if it is damaged or broken. MAXIMUM WEIGHT RECOMMENDATION : 18 LBS