

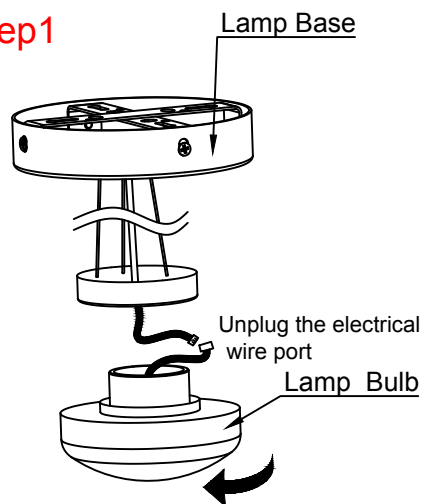
Pendant Light Instruction



REMINDER

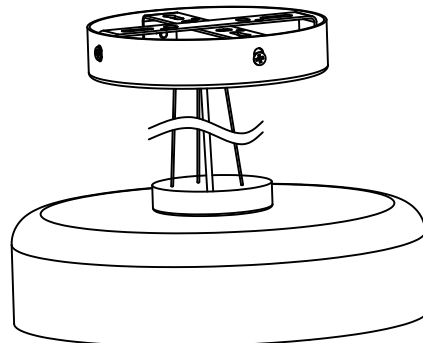
To avoid safety accidents or hidden dangers, professional electricians must operate this product when installing it.

Step1



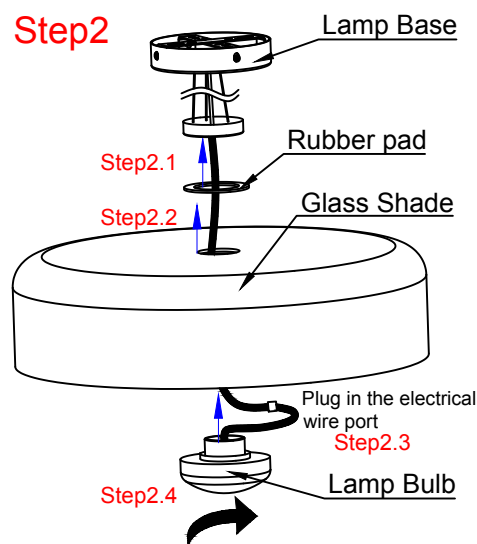
Unscrew the light bulb by turning it clockwise.

Step3



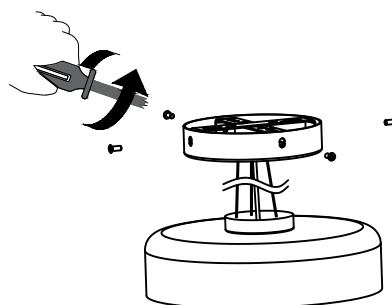
Step 2 completed as shown in the figure.

Step2



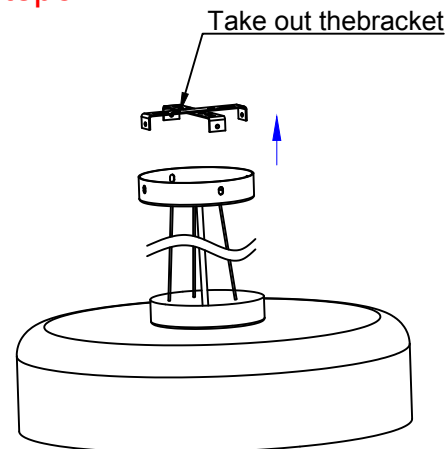
Install according to the above steps

Step4

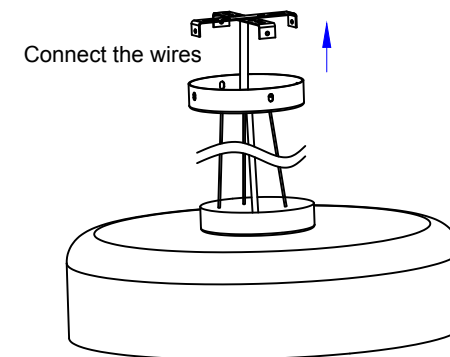


Screw the 4 screws out

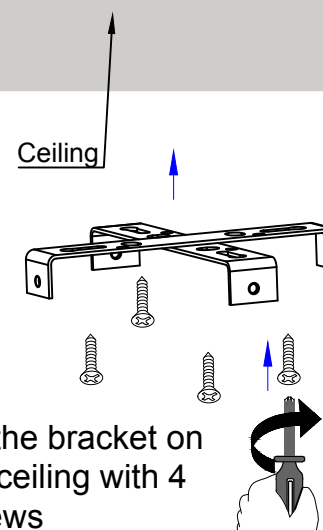
Step5



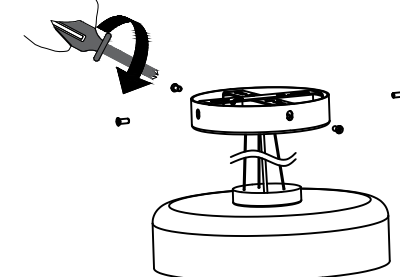
Step7



Step6



Step8



Align the holes and tighten the 4 screws clockwise



WARNING!

If the lamp installation is not completed, do not turn on the power.