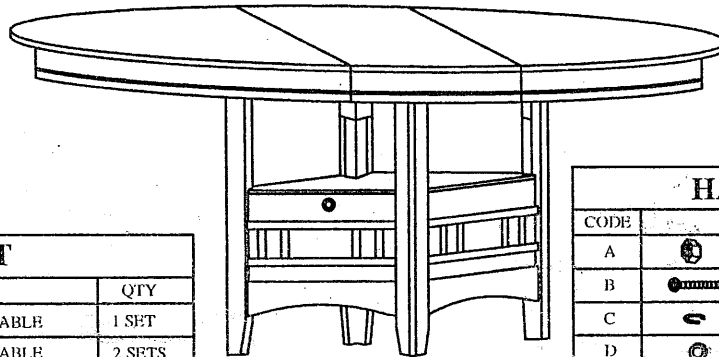


ASSEMBLY INSTRUCTION



PART LIST

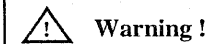
NO	DESCRIPTION	QTY
1	WALL SIDE TABLE	1 SET
2	WALL SIDE TABLE	2 SETS
3	DOOR SIDE TABLE	1 SET
4	TABLE TOP	1 SET
5	TABLE LEG	4 PCS
6	UPPER PANEL COVER	1 PC
7	LOWER PANEL COVER	1 PC

HARDWARE LIST

CODE	DESCRIPTION	QTY
A	5/16" HEX NUT	4 PCS
B	5/16" x 2" BOLT	14 PCS
C	5/16" SPRING WASHER	18 PCS
D	5/16"x1mm FLAT WASHER	14 PCS
E	5/16"x2mm FLAT WASHER	4 PCS
F	Ø3.5 x 15 SCREW	4 PCS
G	HINGE	1 PC
H	ALLEN KEY	1 PC
K	WRENCH	1 PC

ASSEMBLY TIPS :

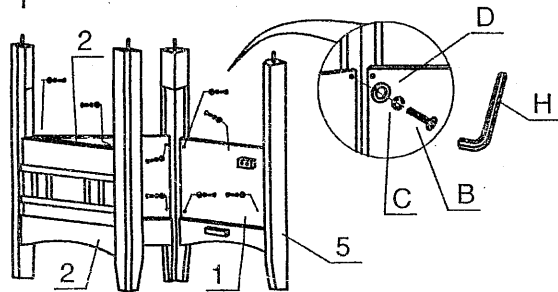
1. Please check to see that all hardware and parts are present prior start of assembly.
2. Please follow attached instructions in the same sequence as numbered to ensure fast & easy assembly.



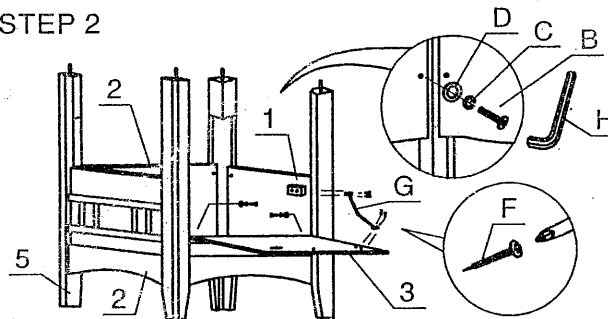
Warning !

1. Don't attempt to repair or modify parts that are broken or defective. Please contact the store immediately.
2. This product is for home use only and not intended for commercial establishments.

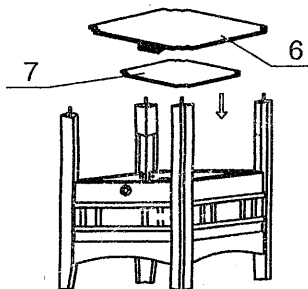
STEP 1



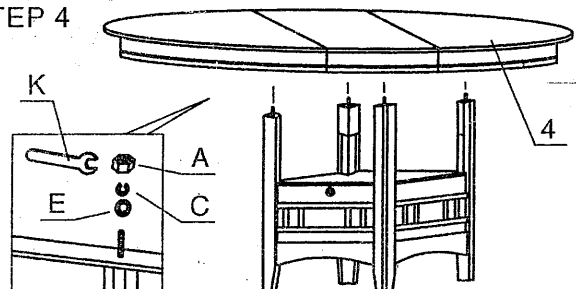
STEP 2



STEP 3



STEP 4



STEP 1

POSITION TABLE TOP (4) UPSIDE DOWN ON A SOFT FLAT SURFACE AND BE CAUTION DURING ASSEMBLY TO PREVENT SCRATCHES TO THE TABLE TOP.

THEN POSITION EACH TABLE LEG (5) EQUALLY BETWEEN THE TWO ADJOINING APRONS. USE A LOCK WASHER (C & D) AND HEX NUT (A) TO LOOSELY TIGHTEN EACH LEG.

THEN TIGHTEN THE TABLE LEG (5) USING AN WRENCH (K) UNTIL THE LEGS ARE SECURED.

STEP 2

STAND THE TABLE TO UPRIGHT POSITION, THE ASSEMBLY COMPLETED.